

# CHESS

By E. J. CLARKE

## California Championship Tourney

The annual tournament of the California State Chess Association held at the Mechanics' Institute, was productive of some highly interesting chess, in spite of the absence of the Oakland expert, E. W. Gruer, and of the brilliant G. E. K. Branch of Berkeley, who found at the last moment that he was unable to compete. In order to avoid an uneven number of players and a consequent "bye" each round H. J. Ralston also retired. This left Harry Borochow and S. Rubenstein, Los Angeles; D. Vedensky, Berkeley; Dr W. R. Lovegrove and A. J. Fink of this city, and Henry Gross, the U. of C. champion. A double round was played, full details of which must be postponed till next week.

\* \* \* \*  
GAME NO. 124

In the following game from the recent Bad Kissingen tourney, Dr. Euwe, the Holland champion, evidently anxious to draw with Capablanca, forced the exchange of all but a knight vs. the Cuban's bishop as early as the seventeenth move. Capablanca sacrificed the bishop for three pawns. However, by abandoning his KPB at move 32, the task of the Dutch master was made far easier than it would have been by 32 . . . P-B4, which requires the nicest play by the knight to stop the pawns.

### ZUKERTORT-RETI OPENING

Euwe	Capablanca	Euwe	Capablanca
White	Black	White	Black
1 S-KB3	S-KB3	23 P-K4	PxP
2 P-B4	P-B4	24 PxP	B-S2
3 P-KS3	P-QS3	25 P-K5	B-R3
4 B-S2	B-S2	26 S-K3	BxP
5 Castles	P-S3	27 S-B2 ch	K-R4
6 P-Q4	PxP	28 K-K4	BxRP
7 SxP	BxB	29 S-Q4	K-S5
8 KxB	B-S2	30 SxP ch	KxP
9 S-QB3	Castles	31 S-Q8	BxP
10 B-S5	S-B3	32 KxB	K-Q6
11 SxS	PxS	33 SxP	K-B7
12 QxQ	KRxQ	34 P-S4	K-B6
13 QR-Q	K-B	35 P-S5	K-S5
14 RxR ch	RxR	36 S-Q6	P-KR4
15 BxS	BxB	37 K-B4	K-B4
16 R-Q	K-K	38 S-B8	KxP
17 RxR ch	KxR	39 SxP ch	K-R5
18 S-Q	K-Q2	40 S-B8	P-QS4
19 K-B3	K-Q3	41 S-K7	K-R6
20 K-K3	K-B4	42 SxP	KxP
21 K-Q3	K-S5	43 S-K5	Drawn
22 P-B4	P-K4		

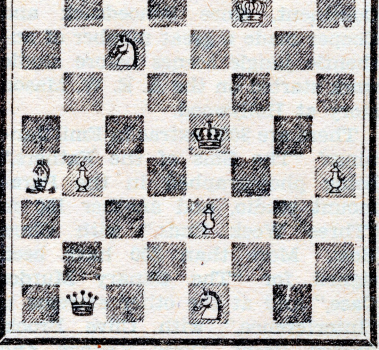
## PROBLEMS

A. J. F.

No. 145—C. L. Bagby

(Composed for the S. F. Chronicle)

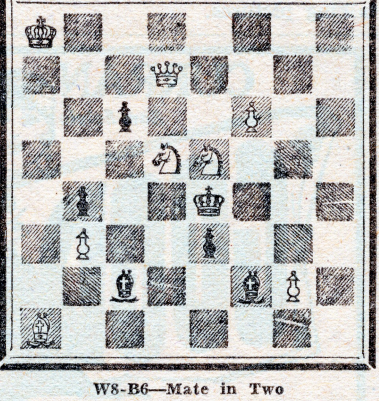
A first attempt by a local composer



W8-B1—Mate in Two

No. 146—A. J. Fink

As a companion piece to the above, it might be interesting to quote the Problem Editor's first attempt, appearing in the St. Paul Dispatch, 1908:



W8-B6—Mate in Two

Solutions—No. 143: Q-S5 (threat Q-S2 ch.), if B-S2 for Black, then PxP followed by PxP e. p., if Black play P-B4. No. 144: P-K3 (with white king on KR8). This error is caught by R-K4 mate. Variations: If RxP, then QxP, accordingly (the threat is either rook checking and S discovers mate).

Solvers' list held over.

M. W. Boyer: K-S4 in No. 138, defeated by Q-K5, as the white knight is still in a state of pin.