

# CHESS

By E. J. CLARKE

We are obliged to Morgan Ward, president of the University of California Chess club, for the following interesting item: "Last Tuesday evening State Champion E. W. Gruer gave a simultaneous exhibition at the U. of C. chess club. He played thirteen games; won eleven, drew one and lost one. Play lasted about two and a half hours." Ward is too modest; he failed to mention that he won the game that Gruer lost. It remained for Gruer to identify the winner. He also forwarded the score of the game, which appears below.

\*\*\*

Another interesting and rather unique simultaneous exhibition took place on board H. M. S. Raleigh on the evening prior to the departure of the British cruiser for Monterey. M. W. Testa of the Mechanics' Institute Chess club, accompanied by J. H. Talbott and The Chronicle chess editor, who acted as referee, played a team of ten, including Talbott. Play began at 8 o'clock and lasted until 11. Testa made a clean sweep of the Raleigh players—V. Farnfield, H. Turner, C. Cash, W. Tyndall, C. Rance, J. Tifles, C. Arrigoni, W. Lewis and E. Cook—but lost to the Mechanics' Institute player, Talbott. The games were followed by many of the cruiser's men, some of whom were probably attracted by the novelty of the proceedings.

An amusing incident occurred during the evening. As part of a reception to a group of American naval officers, the Raleigh's band struck up the ever-inspiring strains of "The Star-Spangled Banner." This was immediately followed by the British anthem. Several moments later one of the visiting chess players remarked: "You have to hand it to the British for courtesy. First they play 'The Star-Spangled Banner' and then 'My Country, 'Tis of Thee.'"

Under the leadership of V. Farnfield, the chess players of the Raleigh can muster up about thirty players. While at Vancouver, B. C., the Raleigh's chess team defeated a team from the Vancouver chess club. Noting the thorough enjoyment the Raleigh players derived from the evening's play, it occurred to the visitors that some effort should be put forth to popularize the game among the soldiers and sailors of the United States army and navy.

\*\*\*

## Gruer's Fame Spreads to East

Under a two-column heading, "Gruer, California Champion, New Factor in Chess Circles," the Brooklyn Eagle in its issue of January 19, says: "Of considerable significance to American chess players, alike in the east and west, is the outcome of the tournament for the California state chess championship, recently concluded at the Mechanics' Institute in San Francisco. The winner was E. W. Gruer of Oakland, who went through with a score of ten straight wins. That the victor will have to be reckoned with among the real first raters is very evident."

\*\*\*

Through an oversight, last week's installment of games was misnumbered. While it does not matter much, still it has been found convenient to identify games by number, hence the custom. The games for Sunday, January 22, therefore, should be Nos. 54, 55, 56.

## GAME NO. 57

From Gruer's simultaneous exhibition at the University of California Chess club:

### QUEEN'S GAMBIT DECLINED

E. W. Gruer	M. Ward	E. W. Gruer	M. Ward
white	black	white	black
1—P-Q4	S-KB3	15—S-R3	QxPch
2—P-QB4	P-K3	16—KxQ	SxPdiss.ch
3—S-QB3	P-QB3	17—Q-K4	BxQch
4—P-K4	P-Q4	18—P-B3	SxP
5—BxP	PxP	19—RxB	BxPch
6—PxP	SxP	20—KxB	R-Q
7—B-QB4	B-QS5	21—R-K	R-Q3

8—Q-S3	B-S2	22—R-K7	R-QB3
9—S-K2	O-O	23—B-S3	RxPch
10—O-O	SxS	24—K-S4	P-R4ch
11—PxS	B-Q3	25—K-R4	R-Q
12—B-B4	BxQ	26—S-S5	R-Q5ch
13—SxB	S-QB3	27—KxP	P-K3ch
14—Q-B2	Q-S4	28—Resigns	

## GAME No. 58

The following game is from the pending championship tournament of the Los Angeles Chess club. Rosenblatt is well known in local chess circles, for many years being a member of the Mechanics' Institute:

### SCOTCH

L. Rosenblatt	H. Borochow	L. Rosenblatt	H. Borochow
white	black	white	black
1—P-K4	P-K4	14—P-QR3	BxP1
2—S-KB3	S-QB3	15—PxB(e)	QxP
3—P-Q4	PxP	16—B-B4(f)	R-Q5
4—SxP	B-B4	17—B-S3(g)	BxB
5—SxS	Q-B3	18—PxP	QxPch
6—Q-Q2	QPxB	19—K-B	R-S5
7—B-Q3	QxS2	20—B-K	SxP
8—Q-K2	Castles(q)	21—Q-R2(b)	SxS
9—S-B3	K-K2(a)	22—QxQ	RxQ
10—B-K3	S-B3(b)	23—BxS(i)	RxBch
11—Castles(q)	B-QS5	24—K-S2	R-B4
12—B-Q2(c)	Q-B4(d)	25—Resigns	
13—K-S	Q-QR4		

### NOTES

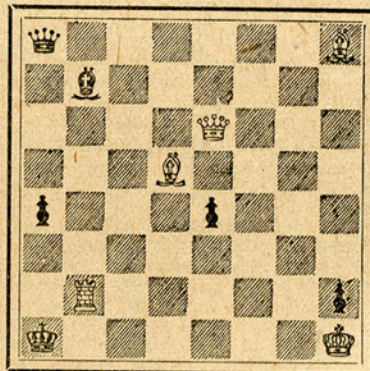
(By Harry Borochow.)

- (a) Black has to develop his S. It can't go to K2 or R3, because P-K5 forces Q-R3, where it has no future.
- (b) Now the Q is holding the KB, and a move need not be lost with the B.
- (c) There is nothing better, for if 12—Q-Q2, SxP, or if 12—K-S, BxS; 13—PxP, Q-R6; 14—P-QB4, P-QS4, with a far superior game.
- (d) Threatening, besides Q-QR4, S-S5.
- (e) If 15—S-Q5, Q-R5; 16—P-QS3, Q-Q5; 17—B-B3, Q-B4; 18—P-QS4, SxS!; 19—PxQ, SxBch, winning.
- (f) The best of a choice of losing moves. Black's threat was 16½—R-Q5, and if white tries to prevent it with 16—Q-K3, S-S5 wins.
- (g) There is no defense.
- (h) Obviously the black knight could not be captured with either Q or S.
- (i) If 23—K-B2, SxR; 24—KxR, R-K, winning, for if 25—K-B2, SxP; 26—BxS, R-K7ch.

# Problems

## PROBLEM NO. 62

By J. A. Coultas, Brooklyn, N. Y.  
BLACK (SIX PIECES)



### WHITE (FIVE PIECES)

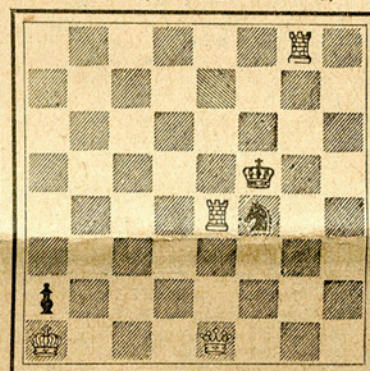
White plays and mates in two

\*\*\*

## PROBLEM NO. 63

By O. Wurzberg, Grand Rapids, Mich.

### BLACK (THREE PIECES)



### WHITE (FOUR PIECES)

White plays and mates in three

Solution to problems of last week:

No. 60—Solved by queen to rook two.

No. 61—Solved as follows (checks not mentioned lead to a shorter result):

1—R(S3)xR, Rg5	14—Ke7, Re7xd7
2—Kf6, Rf5-g6	15—Kf6, Rf7
3—Ke7, Rf7-e7	16—Ke5, Rg7
4—Kd6, Rd7	17—Kf4, Rg4
5—Ke5, Re7	18—Kf3, Rg3
6—Kd4, Re4	19—Kf2, Rg3
7—Ke3, Re3	20—Ke2, Rg3
8—Kf4, Rf3	21—Kf1, Rd1
9—Ke4, Re4	22—Kf2, Rf1
10—Kd4, Rd3	23—Ke3, Rf3
11—Kc5, Rd5	24—Kd4, Rf4
12—Kc6, Re5	25—Kd5, Rf5
13—Kd6, Re6xd5	26—Kd6!!!

The final position agrees almost exactly with the original position.

\*\*\*

The Good Companion folder for January, a monthly magazine, devoted to problems, contains the award of its fourteenth Meredith tournament (problems of twelve pieces or less). No. 62 shows how the judges can pick out positions which suffer from anticipation. Compare: E. Ferber, April, 1911, r5Bb, 1p6, 6Q1, 2B5, p2p2p1, 1R1K4, k7,7R—2 mover.

No. 63 contains a beautiful idea in echo form.

\*\*\*

### SOLVERS' LIST

E. S. Van Camp, city, white wins in any case. D. M. Pereyra, city; "J. I. H.," city; "Floy," Fresno, yes. "A. J. H.," Palo Alto; "D. E. F. E.," city, welcome back. J. B. Stine, Roseville; S. L. Jackson, Dyerville; J. Ford, city; A. E. Bary, city; "J. H. S.," San Mateo; P. Young, city; Peter Draper, Sacramento, key move sufficient; Rev. Leander Tournay, Woodland; S. E. Silvius, city; W. B. Clarke, San Jose.

# MONTHS OF SUFFERING

## How a Baltimore Girl Recovered Her Health

Baltimore, Maryland.—"For several months I suffered with severe backache and general weakness. I could not sleep comfortably at night for pains in my back. I found your book at home one day and after reading it began to take Lydia E. Pinkham's Vegetable Compound. I have had very good results and some of my girl friends are taking it now. You may use this letter to help other girls, as the letters in your book helped me."  
—ROSE WADNER, 3018 Roseland Place, Baltimore, Md.

That is the thought so often expressed in letters recommending Lydia E. Pinkham's Vegetable Compound. These women know what they have suffered, they describe their symptoms and state how they were finally made well.

Lydia E. Pinkham's Vegetable Compound is a medicine made from medicinal roots and herbs, and without drugs, to relieve the sickness women so often have, which is indicated by backache, weak feelings, nervousness, and no ambition to get anything done or to go anywhere. It has helped many women. Why not try it?

# ASTHMA

## DON'T SUFFER ANOTHER DAY

If you have spasmodic or true asthma, take HOMODYNE CAPSULES. In most cases they act like magic and make the worst sufferers forget they had asthma. Tell your friends who suffer they give sure and quick relief—your money back if they fail. Guaranteed free from "dope," injurious or habit forming drugs. HOMODYNE CAPSULES are for sale at Wakelee's and other drug stores. Inexpensive.