

CHESS

By E. J. CLARKE

The chess world was electrified by the news from Buenos Aires that Alekhine had won the eleventh and twelfth games of the championship match. Score: Alekhine 3, Capablanca 2.

State Champion vs. M. I. C. C.

E. W. Gruer, California chess champion, entertained the Mechanics' Institute Chess Club last Saturday evening by playing twenty-one games simultaneously—a record for the Oakland expert, who won 13, lost 4 and drew 4. Gruer wound up the exhibition in a little over three hours. A delegation from the Vallejo Chess Club unfortunately arrived too late to participate, but were interested spectators. However, a board was found for D. A. Austin, who was the last player to surrender to the champion's forceful, accurate play. Following is a tabulated score:

Board	Score	Board	Score
1—Van Hoven	0	12—Langrock	0
2—Barkhaus	½	13—Olshausen	½
3—Fink	1	14—Jordy	0
4—Clarke	1	15—Folger	0
5—Maus	0	16—Chevalis	0
6—Pause	½	17—Nelson	0
7—Fox	0	18—Sheldon	½
8—Goehler	1	19—Silvius	1
9—Dudley	0	20—Austin	0
10—Mordosky	0	21—Bolling	0
11—Harper	0		

* * * *

The board of trustees of the Mechanics' Institute has approved the following committee to manage chess and checker activities, which organized at a meeting held October 8: J. F. Smyth, chairman; G. Goehler, secretary-treasurer; E. W. Gruer, E. J. Clarke, Fred Christensen and H. P. Braig and W. C. Crook for the checkers' section.

* * * *

GAME NO. 62

QUEEN'S GAMBIT DECLINED (Seventh Game of Match)

Capablanca (White)	Alekhine (Black)	Capablanca (White)	Alekhine (Black)
1 P-Q4	P-Q4	19 B-Q3	QxSP
2 P-QB4	P-K3	20 BxPch	K-B
3 S-KB3	QS-Q2	21 B-K4	Q-R6
4 S-B3	KS-B3	22 Q-Q2	B-K3
5 B-S5	P-B3	23 P-QB4	P-R4
6 P-K3	Q-R4	24 R-S	QxP
7 S-Q2	B-S5	25 R-R	Q-B2
8 Q-B2	Castles	26 Q-S2	Q-B4
9 B-B4	P-B4	27 B-Q5	R-R3
10 S-S3	Q-R5	28 R-K4	R-Q3
11 BxS	SxB	29 R-R7	K-K2
12 QPxP	S-K5	30 QxP	K-Q
13 PxP	BxSch	31 BxB	PxB
14 PxB	SxP(B4)	32 QxP	Q-S5ch
15 R-Q	PxP	33 QxQ	PxQ
16 RxP	SxS	34 P-B5	R-B3
17 Pxs	Q-B3	35 RxSP	RxP
18 R-Q4	R-K	36 R-R7	Resigns

GAME NO. 63

QUEEN'S PAWN OPENING (Fourth Game of Match)

Alekhine (White)	Capablanca (Black)	Alekhine (White)	Capablanca (Black)
1 P-Q4	S-KB3	21 SxB	BxS
2 P-QB4	P-K3	22 B-S	RxR
3 S-QB3	P-Q4	23 RxR	BxB
4 B-S5	B-K2	24 RxB	R-QB
5 P-K3	Castles	25 Q-K	Q-B2
6 S-B3	QS-Q2	26 P-R3	S-K5
7 R-B	P-B3	27 S-K2	Q-K4
8 P-QR3	P-QR3	28 R-B	RxR
9 Q-B2	R-K	29 QxR	Q-QB4
10 B-Q3	P-R3	30 QxQ	SxQ
11 B-B4	PxP	31 S-Q4	K-B
12 BxBP	P-QS4	32 P-QS4	S-R5
13 B-R2	B-S2	33 K-B	S-S3
14 Castles	P-B4	34 S-S3	S-B5
15 PxP	SxP	35 S-B5	SxP
16 KR-Q	Q-S3	36 SxP	K-K2
17 B-K5	QR-B	37 K-K2	K-Q3
18 Q-K2	QS-K5	38 K-Q3	S-B5
19 B-Q4	B-B4	39 S-B5	P-B4
20 SxS	BxB	40 K-B3	K-Q4

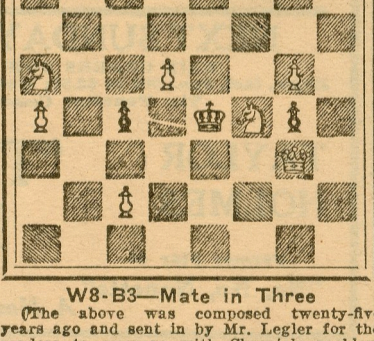
Drawn after nine more moves.

* * * *

PROBLEMS

A. J. F.

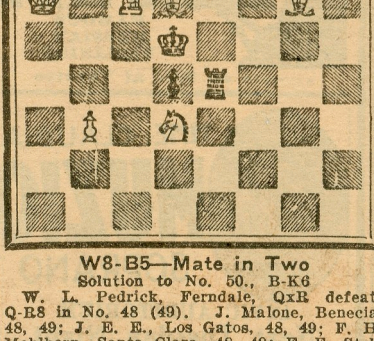
No. 51, by HUGO LEGLER Mt. Tamalpais, Cal.



W8-B3—Mate in Three

(The above was composed twenty-five years ago and sent in by Mr. Legler for the readers to compare with Chronicle problem No. 43 by G. Liberali, which contains the same idea.)

No. 52, by R. B. GREEN Council Bluffs, Iowa



W8-B5—Mate in Two

Solution to No. 50., B-K6

W. L. Pedrick, Ferndale, QxR defeats Q-B8 in No. 48 (49). J. Malone, Benecia, 48, 49; J. E. E., Los Gatos, 48, 49; F. H. Mehlhorn, Santa Clara, 48, 49; F. F. Stebbins, Chico (48, 49); A. R., city, 48, 49; E. Dunipace, Palo Alto, 49.