

CHESS

By **E. J. CLARKE**

California Championship Tourney

George Goehler, secretary of the Mechanics' Institute Chess Club, 57 Post street, who will act as tournament director of the California State Chess Association tourney, starting this afternoon, announces that there will be afternoon and evening sessions, to which visiting chess players will be welcome. Additional entries are D. Vedensky, H. J. Ralston and Professor G. E. K. Branch. The tournament will run for one week.

* * * *

An interesting team match was played at the Mechanics' Institute Friday evening, September 14, San Francisco vs. East Bay. Several newcomers were in the latter's line-up and give promise of developing into first-class players. Score: San Francisco 9, East Bay 6.

Following table shows pairings and results of individual games:

SAN FRANCISCO		EAST BAY	
Bd.		Branch	1
1 Fink	0	Fawcett	1/2
2 Rubinstein	1/2	Vedensky	1
3 Clarke	0	Smith	0
4 Stamer	1	Allen	1
5 Ralston	0	Montecillo	0
6 Bergman	1	Christensen	0
7 Bagby	1	Robison	1
8 Gross	0	Plumly	1
9 Goehler	0	Paul	0
10 Schue	1	Lowenthal	0
11 Van Hoven	1	Belmont	1/2
12 Silvius	1/2	Lauderdale	0
13 Powell	1	Brewster	0
14 Sheldon	1	McLain	0
15 Adams	1		
Total	9	Total	6

San Francisco played White on even numbered boards.

* * * *

A. Kupchik of the Manhattan Chess Club, by winning first prize at the recent tournament of the National Chess Federation at Bradley Beach, N. J., has become a serious contender for the United States chess championship, now held by Frank J. Marshall. Kupchik is ambitious to wear the crown and undoubtedly will challenge Marshall if he can secure backing to the amount of \$5000—the figure set by the Federation as a minimum for a championship match.

* * * *

GAME NO. 123

A brilliant game, played at Lodz, Poland, several years ago, between S. Rubenstein, now of Los Angeles, and the late chess master, H. Salve.

EVANS GAMBIT

Rubenstein	Salve	Rubenstein	Salve
White	Black	White	Black
1 P-K4	P-K4	11 Q-Q4	S-KB3
2 S-KB3	S-QB3	12 Q-K5 ch	K-B
3 B-B4	B-B4	13 B-R6(e)	S-K
4 P-QS4	SxP(a)	14 BxBP	KxB
5 SxP(b)	Q-B3	15 S-S4 ch	S-B3
6 P-Q4	BxP	16 BxP	QS-Q4
7 S-S4(c)	BxP ch	17 BxS	P-Q3
8 SxB	QxR	18 S-R6 ch	K-B
9 Castles	QxS(?)	19 B-S7 mate	
10 P-B3(d)	Q-B7		

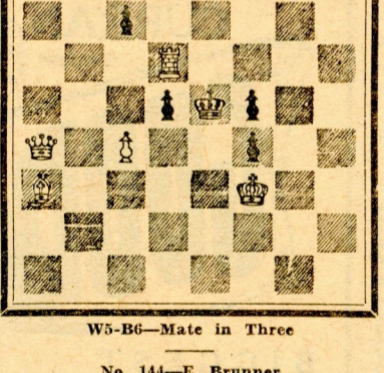
NOTES

- (a) More usual is BxP, but with 5 P-QB3, S-QB3, we have a transposition of moves.
- (b) Not good, as Black may reply 5 . . . Q-S4!
- (c) Obviously the Q cannot retake.
- (d) Threatening to lock in the queen by B-S3.
- (e) Very fine. The bishop cannot very well be captured, while White threatens 14 QxS, with dire consequences.

PROBLEMS

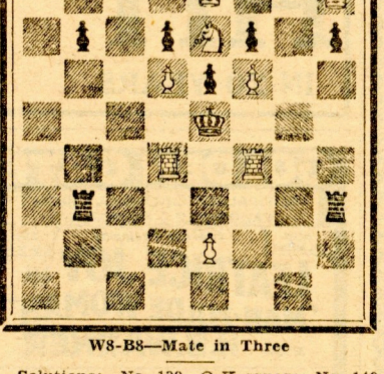
A. J. F.

No. 143—Dr. Emanuel Lasker



W5-B6—Mate in Three

No. 144—E. Brunner



W8-B8—Mate in Three

Solutions: No. 139—Q-K square; No. 140—P-S5; No. 141—S-B8; No. 142—R-KS2.

Solvers' list: E. S. Gilbert, Oakland; C. E. Taylor, Oakland; F. H. Mehlhorn, Santa Clara; "Tommy" Walters, Oakland; M. W. Boyer, president of S. F.; J. E. E., Los Gatos; J. W. Gorrell, Lodi; S. A. Reynolds, Chico; W. R. Shaw, city; A. R., city.

M. W. Boyer: Will investigate claim re No. 138.