

# CHESS

By **E. J. CLARKE**

Professor Gerald E. K. Branch of University of California faculty entertained members of Mechanics' Institute Chess Club last Saturday evening, playing against twenty-three boards simultaneously. The professor played lively gambit chess and evolved several brilliant, winning combinations. Score: Branch won 11, drew 9, lost 3 to Messrs. Silvius, Hugo and Clowe.

\* \* \* \*

The gold medal offered by the Mechanics' Institute for annual competition in the major tournament will be supplemented this year by the club championship medal offered by the new National Chess Federation.

\* \* \* \*

The following game, played between two of the leading amateurs of the metropolitan district at the New York state championship meeting, may serve as a comparison to the games played by the best Pacific Coast players. The opponents in this game were the 1926 champion and the former title holder. The latter, Rudolf Smirka, was as determined to win as was Champion Milton Hanauer to defeat his rival. Both players being thus on their mettle, a good game resulted:

## GAME NO. 53

### IRREGULAR DEFENSE

Hanauer (White)	Smirka (Black)	Hanauer (White)	Smirka (Black)
1 P-Q4	S-KB3	20 S-Q4	KS-S5
2 S-KB3	P-K3	21 SxS	SxS
3 P-B4	P-QS3	22 RxP(e)	RxR
4 P-KS3	B-S2	23 RxR	K-S!(f)
5 B-S2	B-K2	24 RxBch	QxR
6 S-B3	P-Q3(a)	25 S-K6	Q-B2
7 Castles	QS-Q2	26 QB-B3	B-B
8 Q-B2	P-KR3	27 B-R3(g)	BxS
9 P-K4	Castles	28 PxP	QxP
10 P-Q5(b)	P-K4	29 Q-Q	P-KR4
11 KS-R4	R-K	30 Q-Q4	Q-K4
12 S-B5	KB-B	31 Q-Q3	Q-B4ch
13 B-Q2(c)	K-R2	32 B-Q4	Q-KS4
14 P-B4	P-KS3	33 P-K5(h)	PxP
15 PxP	QSxP	34 BxS	PxKB
16 S-K3	B-S2	35 B-K3	R-Q
17 R-B2	R-K2	36 Q-S3	Q-B4
18 QR-KB	Q-R(d)	37 P-B5ch	K-R2
19 S-S5	P-B3	38 PxP	Q-B6
		39 Resigns	

### NOTES

- (a) If 6 .. P-Q4; 7, PxP, leaving Black's center none too strong.
- (b) Of rather doubtful merit. P-KR3 would not be out of place here.
- (c) Again P-KR3 might now have been played to better purpose.
- (d) A move which has the appearance of eccentricity, but, as will be seen presently, is an excellent one, nevertheless. The knight is amply protected and room made for the development of the QR.
- (e) Thinking to prevent the loss of the exchange by pinning the KB.
- (f) The right move; Q-S would have been met by RxP, etc.
- (g) A miscalculation, overlooking the fact that the knight later on will be supported by the KR pawn.
- (h) A desperate maneuver, which comes to naught because of Black's careful tactics.

Notes (cond.) by H. Helms.

\* \* \* \*

## GAME NO. 54

### FRENCH DEFENSE

A game from the recent California State championship tournament, between A. J. Fink and Donald Mugridge of Los Angeles. The problem expert gets a bad opening, but evens up matters later on, only to fall into a mating net through a miscalculation.

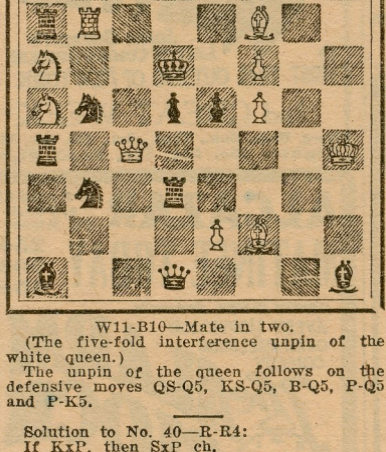
A. J. Fink (White)	D. Mugridge (Black)	A. J. Fink (White)	D. Mugridge (Black)
1 P-K4	P-K3	14 P-B3	Q-S3
2 P-Q4	P-Q4	15 R-S	SxQP
3 S-QB3(a)	B-S5(b)	16 PxQS	P-B6
4 B-Q3?(c)	P-QB4	17 PxS	B-S4ch
5 P-QR3	BxSch	18 K-B2	PxB
6 PxP	P-B5	19 Q-B3	C'stl's,K
7 B-K2(d)	S-KB3	20 PxP	RxPch
8 P-K5	S-K5	21 S-B3	QR-KB
9 B-S2	S-QB3	22 RxP	RxP
10 K-B(e)	Q-R5	23 P-R4?(h)	R-K7ch
11 BxP(f)	PxB	24 K-S	Q-Q3
12 Q-K	P-KB4	25 RxB	Q-S6
13 P-KR4(g)	B-Q2	26 Resigns	

### NOTES

- (a) One of Steinitz's "enduring innovations."
- (b) Devide, editor of Steinitz's Selected Games, calls this inferior to S-KB3.
- (c) Here PxP is correct. The text move is a mistake.
- (d) As pointed out by Fink, the bishop should go home, so as to allow S-K2 later.
- (e) With the idea of meeting the double attack on the QBP with Q-K.
- (f) But White now finds that if Q-K, Black administers the coup de crush with QSxQP! So he invents a neat reply.
- (g) To prevent the escape of the knight.
- (h) Now White, by an ill-advised attempt to win, throws away a good chance to draw by the obvious and sound R-K. However, White, foreseeing his opponent's maneuver, thought that 26 R-S5 would avert the threat, overlooking RxPch.

# PROBLEMS

By **A. J. F.**



W11-B10—Mate in two.

(The five-fold interference unpin of the white queen.)

The unpin of the queen follows on the defensive moves QS-Q5, KS-Q5, B-Q5, P-Q5 and P-K5.

Solution to No. 40—R-R4:  
 If KxP, then SxP ch.  
 If K-B7, then Q-K2 ch.  
 If K-K5, then Q-S3, etc.

Correct solutions to No. 38 and No. 39 received from J. D. Kelleher, Sacramento; W. L. Pedrick, Ferndale; R. Dunipace, Palo Alto; F. H. Melhorn, Santa Clara; Q. M. S., Vallejo; J. E. E., Los Gatos; F. F. Stebbings, Chico.  
 E. Grill, City—R-Q5 defeated by RxQ5 in 38 and SxS ch defeats K-Q7 in No. 39.  
 Belated solution to No. 37 from G. Leiva, Livermore.