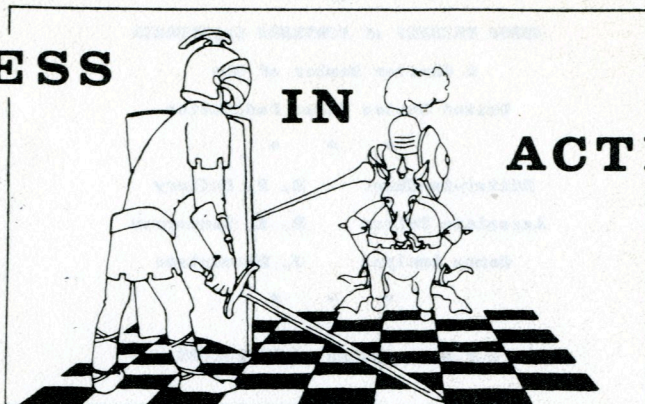


# CHESS

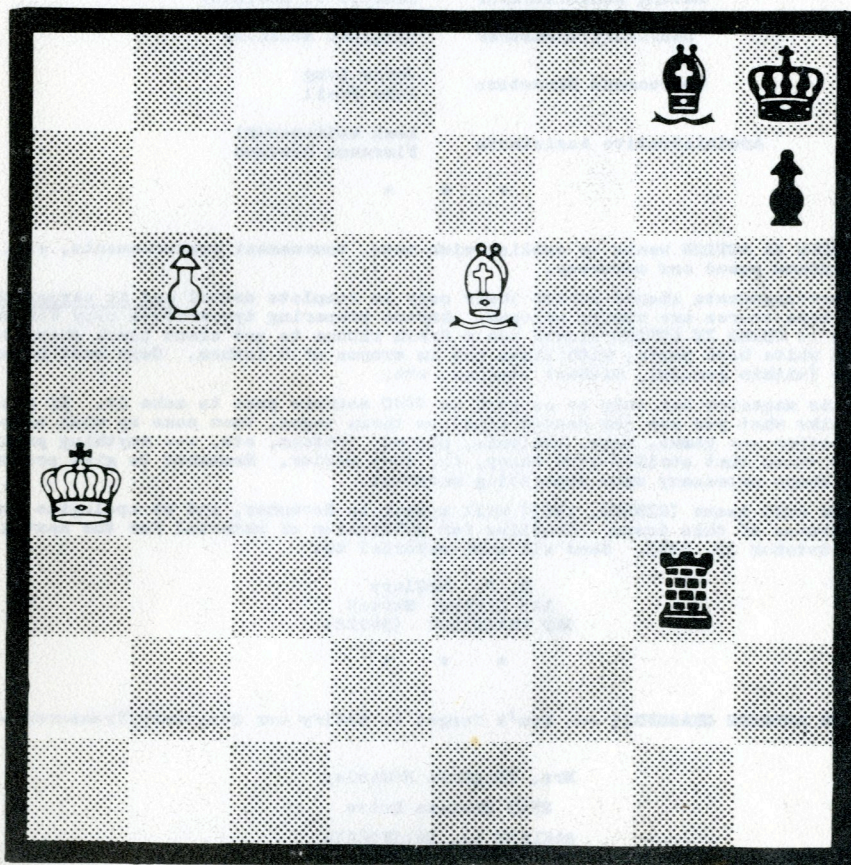
# IN

# ACTION



VOL. XIV, No. 3

AUTUMN, 1965



WHITE TO PLAY AND DRAW

(solution in "Keres' Corner")



published quarterly  
by

**CHESS FRIENDS of NORTHERN CALIFORNIA**

A Charter Member of the  
United States Chess Federation

\* \* \*

Editor-in-Chief      R. P. McClary  
Associate Editor      R. S. Henderson  
Games Analyst        J. Blackstone

\* \* \*

**C.F.N.C. BOARD of DIRECTORS**

Chairman              Bill Stevens  
Field Administrator    George Koltanowski  
Rating Administrator   Charles T. McGinley  
Secretary/Treasurer   Virginia McGinley  
Tournament Directors   Jerry Long  
                             John Small  
Administrative Assistants   Leah Koltanowski  
                             Florence Stevens

\* \* \*

CHESS IN ACTION wants to publish club news, tournament announcements, etc., with maximum speed and accuracy.

Correspondents should submit their copy in complete detail and in paragraph form. Game scores are always welcome. Anyone preparing typewritten copy for submission to CHESS IN ACTION should use a fresh ribbon to get clean black characters. Type on white bond paper, with lines not in excess of 8 inches. Copy must be errorless (within reason), without smudges, etc.

This magazine can only be as good as CFNC members care to make it. If you don't like what you see (or cannot find) on these pages, then come up with something better --- games, news, analysis, photos, letters, etc. --- anything pertinent to chess that strikes your fancy, for that matter. Remember to give proper credit where necessary when submitting material.

Our next issue (WINTER, 1965) will appear in November, and we apologize for the lateness of this issue. Deadline for submission of material for the next issue is October 15, 1965. Send all such material to:

R. P. McClary  
125 Irving Street  
SAN FRANCISCO (94122)

\* \* \*

HAS YOUR ADDRESS CHANGED?? --- Don't forget to notify our Secretary/Treasurer ---

Mrs. Virginia McGinley  
2763 Chelsea Drive  
OAKLAND 11, CALIFORNIA

\* \* \*





## editorial

C.F.N.C. members who glance at our masthead when they receive their copy of CHESS IN ACTION will note that several changes have been effected.

The principal reason for these changes is the fact that BILL STEVENS, our Tournament Administrator since the founding of C.F.N.C., recently received a promotion in his work that placed a heavy increase on the demand for his time. Because the duties of the tournament administrator are extensive and time-consuming (as all veteran C.F.N.C. players well know), Bill felt he could no longer do justice to both.

Happily, he will remain with us as Chairman of the C.F.N.C. Board of Directors, and it is hopefully anticipated that he will be read frequently on future pages of CHESS IN ACTION, in the ancillary function of Contributing Editor.

Bill's shoes are not easy to fill, and we found it necessary to replace him with not just one, but two good men. JOHN SMAIL (Berkeley) and JERRY LONG (Concord) will take over Bill's functions in directing tournaments and inter-club match schedules.

It seems strange that Bill will no longer be supervising our competitive activities. He, along with his wife Florence, have been helping keep our organization going and growing since its inception fourteen years ago.

We have been remiss in paying proper tribute to Bill and Florence for everything they have done for us over the years. We offer them our best wishes and say, in the words of the ancient Gaelic toast:

"good luck to you, and may the wind be always at your back and helping you along."

\* \* \*



269 players participated in the 15th Annual Sonoma Open Air Chess Festival. JOHN BLACKSTONE (Saratoga) won the "Expert/A" division trophy, the "B" division was taken jointly by ELWIN MEYER (Oakland) and N. ROSEN (Alameda) and the "C" division was split three ways by MANUEL RIVERA (Pittsburg), JERRY LONG (Concord) and N. JOHNSON (Berkeley). Each of the above players received a trophy.

Mrs. JOAN OYLER (Antioch) took the Women's Division, and PHILLIP QUIRARTE (San Francisco) captured the Junior Division title. The KOLTY CHESS CLUB (San Francisco) won special awards for number of club entries and best scores obtained by its members.

Simultaneous exhibitions were given by Capt. JOHN HUDSON (Mather AFB), DON SUTHERLAND (San Francisco), DENNIS SACCUZZO (Corte Madera), 12-year-old RIDGELEY SCHNEIDER (Redwood City), JOHN SMAIL (Berkeley) and AKI KANAMORI (San Francisco).

\* \* \*

99 players turned out for the recent Oakland Open Tournament organized by Ted Anderson.

STEVE JOPLIN (Oakland) took 1st place in the "Expert/A" division with  $4\frac{1}{2}$ - $\frac{1}{2}$ . Splitting 2nd, 3rd and 4th places were JAMES HURT (Saratoga), DENNIS SACCUZZO (Corte Madera) and WILLIAM WEHRMEISTER, Jr., with  $3\frac{1}{2}$ - $1\frac{1}{2}$  scores. Behind them were R.S. HENDERSON (Berkeley) and PAUL VAYSSIE (San Francisco) with 3-2. There were 32 players in this section.

The "B" division (with 34 entries) was won by ALLEN GOLBERT (Alameda) with a  $4\frac{1}{2}$ - $\frac{1}{2}$  score. RANDALL HOUGH (Stockton), GEORGE FRENCH (Berkeley) STEVE ADELMAN (Atherton), DAVID RAPPAPORT (Berkeley), R.C. JACOB (Walnut Creek), WILLIAM PARKER (Oakland) and KEN YAMAMOTO (Berkeley) were bunched in a 2nd place tie with 4-1.

The "C" division, with 29 players, was headed by LEONARD TROTTER (El Cerrito) with  $4\frac{1}{2}$ - $\frac{1}{2}$ . AL CABRAL (Oakland), MIKE PUST (Santa Clara), ROBERT ALEXANDER (San Francisco) and NATHAN OAKLANDER (Berkeley) all scored 4-1 behind Trotter. After them were DAVID AMME (Woodside), PAUL MEYER (Saratoga), D.P. LYNN (Saratoga) and CHARLES PARCELLS (Folsom) scoring  $3\frac{1}{2}$ - $1\frac{1}{2}$ . BRUCE HANSEN (Walnut Creek) won the "Sunday Special" tourney.

A booklet on the Oakland tournament has appeared. The price is \$0.50 per copy, and the booklet can be ordered from Martin E. Morrison, of the Oakland Chess Club (see below).

\* \* \*

The OAKLAND CHESS CLUB has moved to new quarters in the Lincoln Elementary School at 225-11th Street, Oakland. The club's name has been formally changed from "Oakland Central YMCA Chess Club" to "Oakland Chess Club."

\* \* \*

R.S. HENDERSON (Berkeley) scored a decisive 7-3 win over R.P. McCLARY (San Francisco) in a CFNC/USCF-rated match played during the summer.

\* \* \*

JOHN SMAIL (Berkeley) won the "Expert/A" trophy and with it, the Berkeley Chess Club's 1965 championship, in a tournament recently concluded at the Berkeley YMCA. RAY CUNEO (Oakland) and STEVE JOPLIN (Oakland) tied for 2nd place, and Ray subsequently won the tie-breaking playoff game. 1st place in the "B" division went to JERRY LONG (Concord) and the runner-up was ROBERT TRENBERTH (Oakland). HENRY BAER (Berkeley) captured the "C" division title, with 2nd place in that section going to NORMAN JOHNSON (Oakland).

International Master GEORGE KOLTANOWSKI made the trophy presentations at the club's Championship Awards Banquet on September 29, 1965. High spots of the evening were addresses by two officials of the YMCA, who attended as honor guest, and the presentation to Kolty of a handsome plaque in recognition of his activities in promoting amateur chess.

\* \* \*

The CFNC Open Tournament held in Berkeley on October 2/3 finished with the following lineup of winners: 1st place in the "Expert/A" group was taken by JOHN BLACKSTONE (Saratoga) with  $4\frac{1}{2}$ - $\frac{1}{2}$ . Tied for 2nd, 3rd and 4th places were RAY SCHUTT (San Jose), GARY PICKLER (Danville) and ROY McCOLLOUGH (Oakland) with 4-1 scores.

R. CLIPSON (Concord) swept the "B" section with 5-0, followed by ELMO MUGNANI (San Francisco), R. INGRAM (Sacramento) and R. CHRISTIAN (Santa Rosa) with 4-1.

Another sweep was recorded by D. CAMPBELL (Orinda) in the "C" division. In 2nd place was M. RASMUSSEN (Oakland) with  $4\frac{1}{2}$ - $\frac{1}{2}$ , and B. GARRISON (San Leandro) and K. ALTMAN (Burlingame) tied for 3rd and 4th with 4-1.

\* \* \*



C.F.N.C. OFFICIAL LEAGUE RATING LIST -- by RATING ADMINISTRATOR CHAS. MCGINLEY

M ..... Master ..... 2200 and above  
 E ..... Expert ..... 2000 to 2199  
 A ..... Advanced ..... 1800 to 1999  
 B ..... Intermediate .... 1600 to 1799  
 C ..... Average ..... 1599 and below

ABINGTON, Ben ....	1550	CASNER, Wm. ....	1528	FLAX, Phil .....	1558
ACHESON, Gary ....	1550	CHAN, Steve .....	1550	FLEISCHER, Peter	1432
ADAIR, Wm. A. ....	1550	CHEW, Dennis .....	1590	FLEIGEL, Joe ....	2064
ADAMS, Douglas ...	1808	CHONG, Wing .....	1778	FORSYTH, Ralph ..	1708
ADELMAN, Steve ...	1772	CHRISTIAN, R. ....	1706	FORTHOFFER, D. ..	1538
ALEXANDER, R. ....	1646	CHRISTIANSON, L. ..	1694	FOUCH, Roy .....	1550
ALLEN, R. J. ....	1550	CHUCK, Allen .....	1826	FOURNIER, R. J. ..	1914
ALMOND, John .....	1554	CIOCHON, Richard ..	1562	FOWLER, George ..	1550
ALTMAN, Kenneth ..	1526	CLARK, Duane .....	1958	FREELS, Larry ...	1550
ANNE, David .....	1622	CLARK, Jay .....	1550	FRENCH, Doug ....	1512
ANDERS, Ernest ...	1924	CLIPSON, Robert ...	1712	FRENCH, George ..	1804
ANDERSEN, Robert ..	1620	CLUNY, Jerry .....	1550	FRIEDMAN, Jerry ..	1546
ANDERSON, Ted .....	1562	CODERRE, Tom .....	1650	FRISBIE, Mark ...	1444
ANDRES, Nick .....	1608	COFFINO, Phil .....	1948		
AUBRY, Patrick ...	1688	COLORADO, R. ....	1644	GALLEGOS, Alex ..	1550
AUSMUS, Ray .....	1594	CONNORS, D. ....	1550	GARCIA, Gabriel ..	1614
AXUP, Douglas .....	1590	CONNES, John .....	1394	GARCIA, Harry ...	1566
AYERS, Lew .....	1928	COOK, Fred .....	1644	GARCIA, Steven ...	1472
		COOK, Larry .....	1550	GARDNER, A. ....	1462
BAER, Henry .....	1590	GOOKE, Dave .....	1866	GARRISON, B. ....	1518
BAKER, Robert ....	1584	CORDS, Carl .....	1704	GAZSE, Mark .....	1812
BALE, Dennis .....	1864	CORNWELL, Jim .....	1578	GILES, Wm. ....	1834
BARBER, Claudia ..	1550	COX, Woody .....	1604	GILLIS, James ...	1514
BARLOW, John .....	1788	CRATER, Milton .....	1670	GIULIANI, D. ....	1750
BARRETT, David ...	1550	CREET, Roger .....	1788	GOLBERT, Allen ..	1814
BARRIENTOS, Jack ..	1550	CROMWELL, R. ....	1704	GOOD, Philip ....	1550
BARTHOLOMEW, E. ..	1690	CROSS, Steve .....	1678	GOODALL, Mike ...	1788
BASS, Stanley .....	1448	CROSSLAND, M. ....	1550	GOODWIN, John ...	1482
BATES, Wm. E. ....	1550	CULOTTA, Jane .....	1580	GOODWIN, John, Jr.	1522
BATTEN, Richard ..	1550	CULOTTA, Paul .....	1720	GOODWIN, W. ....	1654
BAUER, Henning ...	1828	CUNEO, Ray .....	1892	GOUGH, Jim .....	1956
BEALE, Clarence ..	1552			GREENWOOD, J. ....	1590
BEARDEN, Kitty ...	1550	DALY, Col. Chas. ..	1784	GREY, Peter .....	1550
BECKLUND, O. ....	1554	DANA, Ted .....	1868	GRIBBLE, Roger ..	1550
BELTRAM, D. ....	1550	DANIELS, Jack .....	1500	GRILLO, R. ....	1666
BENNETT, David ...	1638	DAVIS, Peter .....	1550	GRIVAINIS, Kon ..	2002
BENSON, Alan .....	1866	DAWDY, James .....	1620	GROSS, Dr. Ben ...	1964
BERRY, Frank .....	1650	DAY, Don .....	1412	GRUENWOLD, Carl ..	1456
BETANCO, David ...	1610	DELSISLE, Rene .....	1762	GUINS, V. G. ....	1726
BETTENCOURT, S. ...	1802	DELMONTE, P. ....	1714	GULLMES, A. ....	1480
BETTENCOURT, W. ...	1680	DENISENKO, Gary ...	1586	GUNSTON, Albert ..	1610
BIERNAT, Jim .....	1598	DESTEFANIS, R. ....	1530		
BIGELOW, Gordon ..	1758	DEVORE, Earl .....	1560	HALL, Bryant ....	1584
BISHOP, K.S. ....	1410	DICKINSON, R. ....	2016	HALLMAN, Doug ...	1964
BIZLEY, Ed .....	1748	DILLON, Glen .....	1480	HANDLEY, M.A. ...	1550
BLACKSTONE, J. ....	2200	DODSON, Harry .....	1530	HANSEN, Bruce ...	1846
BLOHM, David .....	2144	DOLNIGAR, Ina .....	1502	HANSEN, Randy ...	1666
BODY, Bart .....	1550	DORNE, Walter .....	1992	HARDY, David .....	1840
BOEHME, Rinehard ..	1532	DORSEY, Joe .....	1550	HARRIS, Donald ...	1684
BOGDANOWICZ, Z. ...	1480	DOSWELL, R. ....	1580	HAUKE, Jerome ...	1786
BOOTH, Robert .....	1772	DREW, Claude .....	1538	HAUSER, James ...	1804
BOYNTON, Chas. ...	1470	DUNCANSON, H. ....	1688	HAWKSWORTH, E. ..	1508
BRANCHAUD, Larry ..	1430	DUNIPACE, Gertrude	1550	HELMKA, Chas. ...	1570
BRENNAN, John .....	1550	DWYER, John .....	1794	HELSE, David .....	1734
BRISTOW, Leo .....	1526			HENDERSON, R.S. ..	1862
BROWN, Chas. ....	1550	EASON, Don .....	1728	HENDRICKS, Wade	1988
BROWN, P.M., Jr. ...	1510	EATON, Bud .....	1792	HENDRICKSON, C. ..	1550
BRUNBERG, Ed .....	1550	ECKLES, Paul .....	1536	HILES, Darrell ..	1550
BUCHANAN, Don .....	1684	EDEN, Joe .....	1550	HILL, Arden .....	1798
BURT, Ken .....	1550	EICHE, Anatole ...	1550	HILL, Rodger .....	1580
BUSH, James .....	1646	EILENSTINE, H.G. ...	1632	HOEKMAN, Don ...	1510
BUTLER, Winston ...	1550	EISEMAN, Janet ...	1540	HOFVENDAHL, R. ..	1656
BYRNE, Patrick ...	1780	EISSLER, R. ....	1590	HOISINGTON, W. ...	1682
		ENGL, Eugene .....	1732	HOLMES, Bryan ...	1540
CABRAL, Albert ...	1650	ERICKSON, Carl ...	1696	HOPPE, Roy .....	2176
CAMPBELL, Duncan ..	1594	EVANS, R.M. ....	1602	HORN, R.V. ....	1612
CAPLAN, Bill .....	1954	EYDAL, A. ....	1802	HORNWOOD, Mike ..	1832
CARACCILO, E. ....	1550			HORODSKY, Dan ...	1550
CARLSON, Minor ...	1550	FANKUSHEN, D. ....	1550	HOUGH, Randall ..	1808
CARTER, John .....	1700	FARLY, George .....	1924		



HUDSON, John ..... 2090  
 HUNEKE, Carl ..... 1788  
 HUGHES, Robert ... 1728  
 HUNT, Steve ..... 1630  
 HURT, James ..... 2036  
 HUTCH, John ..... 1680  
 HUTCHASON, Clark . 1550  
  
 INGRAM, Louis .... 1570  
 IPSEN, Earl ..... 1550  
 IRWIN, Richard ... 1968  
  
 JACHEWS, Wm. .... 1554  
 JACK, G.H. .... 1550  
 JACOB, Robert .... 1708  
 JEE, James ..... 1576  
 JENNINGS, David .. 1634  
 JENSEN, Olga ..... 1550  
 JOHNSON, Myron ... 1502  
 JOHNSON, Norman ... 1578  
 JOHNSON, Stan .... 1886  
 JONES, Paul ..... 1550  
 JONES, Ray ..... 1550  
 JOPLIN, Steve .... 1990  
 JOPLIN, Wm. .... 1488  
 JOURIS, Wm. .... 1506  
  
 KANAMORI, Aki .... 2034  
 KANE, George ..... 2104  
 KASPRIK, J.E. .... 1654  
 KAUFMANN, Wm. .... 1550  
 KEELING, George ... 1550  
 KELDER, Pieter ... 1628  
 KELLY, Russell ... 1744  
 KILGORE, Nathaniel 1550  
 KILKER, Stan ..... 1690  
 KISS, Tom ..... 1716  
 KNACK, Amos ..... 1718  
 KNIGHT, Sherwood . 1636  
 KNIGHT, Warren ... 1720  
 KNUCKLES, H. .... 1510  
 KOLISCH, Maria ... 1532  
 KOR, Harry ..... 1890  
 KORENS, L.S. .... 1632  
 KRAFT, Ron ..... 1548  
 KUYPER, John ..... 1550  
 KYLE, Donald ..... 1608  
  
 LAMASNEY, Peter .. 1504  
 LANON, Ralph ..... 1704  
 LANE, Lawrence ... 1440  
 LANE, Martin ..... 1540  
 LARSEN, Roger ..... 1840  
 LARUE, Albert ..... 1862  
 LASICH, John ..... 1806  
 LAUNER, Herb ..... 1690  
 LAVELLE, Perry ... 1590  
 LAVER, Richard ... 2100  
 LAWRENCE, Herbert 1526  
 LEBETE, C.H. .... 1526  
 LEONARD, Leo ..... 1502  
 LEONG, Eric ..... 1604  
 LEWIS, Bobby ..... 1550  
 LIGDA, Richard ... 1572  
 LIVINGSTON, David 1486  
 LONG, Jerome ..... 1842  
 LONG, Lynda ..... 1550  
 LUND, Anna ..... 1450  
 LUND, Jens ..... 1898  
 LYNCH, Robert ..... 1506  
 LYNN, David ..... 1624  
  
 McCLARY, R.P. .... 1906  
 McCOLLOUGH, Roy .. 1762  
 McGINLEY, Chas. ... 1786  
 McHUGH, Doug ..... 1550  
 McILLRATH, Jim ... 1912

McKAIG, Wes ..... 1756  
 McKEE, Leonard .... 1550  
 McKENZIE, Arthur .. 1840  
 McLEOD, Dan ..... 1790  
 McMAHAN, Edge ..... 1558  
 McMILLAN, Mrs. E. . 1508  
 McMILLEN, Ralph ... 1544  
 McNALLY, Everett .. 1852  
 MACKAY, Malcolm ... 1550  
 MacNEILL, Avery ... 1584  
 MAGUIRE, Jim ..... 1730  
 MAKENS, T.E. .... 1766  
 MARIEN, Mike ..... 1702  
 MARINEN, C.A. .... 1544  
 MARMOR, James ..... 1890  
 MASER, Tom ..... 1800  
 MEADOR, Dave ..... 1446  
 MEALIFFE, Wm. .... 1734  
 MECORNEY, John ... 1890  
 MELER, Ron ..... 1582  
 MENDEZ, John ..... 1626  
 METHVEN, Marvin ... 1694  
 MEYER, Paul ..... 1646  
 MEYER, Thomas ..... 1550  
 MEYERS, Elwin ..... 1644  
 MILLER, Chas. .... 1620  
 MILLER, Fred ..... 1540  
 MITCHELL, David ... 1516  
 MITCHELL, Robert .. 1894  
 MONTFORT, Wm. .... 1760  
 MONTGOMERY, A.E. ... 1500  
 MONTGOMERY, C. .... 1582  
 MONTY, David ..... 1550  
 MOORE, June ..... 1432  
 MOOREHEAD, Alex ... 1550  
 MORLEDGE, June ... 1550  
 MORRISON, Martin .. 1446  
 MUGMANI, Elmo .... 1752  
 MUJAHED, Saleh ... 1692  
 MURPHY, Wm. .... 1654  
 MYERS, James ..... 1866  
  
 NASH, Pat ..... 1618  
 NASON, Don ..... 1874  
 NAVE, Jay ..... 1850  
 NEES, Dean ..... 1656  
 NEWCOMER, Nathan .. 1604  
 NG, Ray ..... 1816  
 NICHOLS, Owen ..... 1572  
 NIEDEBALEC, R. .... 1550  
 NIELSON, Robert ... 1550  
 NOGERA, Don ..... 1450  
 NORRIS, Bruce ..... 1650  
 NOTOR, John ..... 1562  
  
 O'DOAN, LaRoy .... 1682  
 OAKLANDER, N. .... 1642  
 OLANDER, Lars ..... 1776  
 OLVERA, Frank ..... 1798  
 ONSTEAD, R.S. .... 1550  
 OSBURN, Erik ..... 2210  
 OSTERNIG, L. .... 1622  
 OWENS, Frank ..... 1550  
 OYLER, Robert ..... 1754  
  
 PACKARD, James ... 1636  
 PANELLA, James ... 1550  
 PARCELLS, Chas. ... 1618  
 PARKER, Wm. .... 1734  
 PARKS, Wm. .... 1764  
 PARSONS, L. .... 1646  
 PARTANSKY, A. .... 1708  
 PASSEAU, Ted ..... 1638  
 PELLETIER, Dick ... 1682  
 PEREZ, F. .... 1636  
 PERIGO, Paul ..... 1560  
 PETERSEN, Bart ... 1572

PETERSON, C.A. ... 1504  
 PHILLIPS, E. .... 1662  
 PICKLER, G. .... 1724  
 POEL, Ira ..... 1962  
 PONTES, Joe ..... 1440  
 POST, L.A. .... 1906  
 POWELL, Jaok ..... 1544  
 POWELL, M.P., Jr. 1550  
 PRATT, Terry ..... 1596  
 PRESSON, L. .... 1574  
 PUST, L.M. .... 1614  
 PUST, M.L. .... 1642  
  
 QUINLIVAN, Mike .. 1950  
 QUINTERO, R. .... 1604  
  
 RACKETT, R. .... 1396  
 RACKWITZ, A. .... 1766  
 RAITLEY, I. .... 1682  
 RAMSEN, Jack ..... 1666  
 RASMUSSEN, M.E. ... 1550  
 RAWLEY, Wm. .... 1696  
 REDFORD, H. .... 1544  
 REIDER, N. .... 1778  
 REINKER, J. .... 1652  
 REYNOLDS, Jim .... 1796  
 RICHARDSON, L. ... 1582  
 RIVERA, M. .... 1470  
 ROBBINS, R. .... 1678  
 ROBINSON, O.K. .... 1670  
 ROGERS, Wm. .... 1916  
 ROSEN, G. .... 1578  
 ROUBAL, R.R. .... 1500  
 RYAN, Jim ..... 1536  
  
 SACCUZZO, D. .... 1976  
 SALIN, L. .... 1520  
 SALNA, J. .... 1896  
 SALO, Eric ..... 1578  
 SANFORD, Tom A. .. 1550  
 SANFORD, Tom B. ... 1550  
 SAXTON, George ... 1550  
 SCHEUBERMAN, J. ... 1764  
 SCHICK, M. .... 1880  
 SCHLIM, Chas. .... 1550  
 SCHNEIDER, R. .... 1568  
 SCHNEIDER, Wm. ... 1632  
 SCHOENE, Fred ..... 1892  
 SCHROTH, Connor ... 1800  
 SCHULZ, A. .... 1588  
 SCHUMANN, Karl ... 1550  
 SCHUPPIUS, E. .... 1470  
 SELTZER, L. .... 1666  
 SHEPPERSON, A. ... 1812  
 SHOEMAKER, Tom ... 1750  
 SLATNICK, R. .... 1866  
 SLOAN, Sam ..... 1936  
 SMAIL, John ..... 1960  
 SMITH, Bob ..... 1550  
 SMITH, Dennis ..... 1608  
 SMITH, Doug ..... 1550  
 SMITH, Norman ..... 1492  
 SODERLUND, S. .... 1550  
 SOLVE, Emil ..... 1658  
 SOMMER, F. .... 1692  
 SPITZ, Carl ..... 1720  
 SREBANOVIC, B. ... 2242  
 STAMPER, Tom ..... 1704  
 STARK, Warren ..... 1888  
 STEELE, Adrienne . 1398  
 STEINMEYER, R. ... 1510  
 STERNLEB, S. .... 1772  
 STEVENS, Bill ..... 1826  
 STEWART, Alex ..... 1630  
 STEWART, Roger ... 1550  
 SUMMERS, Ed ..... 1668  
 SUTHERLAND, Don .. 2136



SUTTER, Neil .....	1458	TUCKER, R. ....	1482	WHEELER, John ....	1582
SWANK, Edgar .....	1478	TULLUS, Koit .....	2174	WIEBE, Richard ...	1668
SYRETT, Ted .....	2022			WIEDENMEYER, L. ..	1680
		UDMAN, Saul .....	1662	WILD, Norman .....	1728
TAMAYO, Raul .....	1726			WILKERSON, Max ...	2010
TAMM, M. ....	1570	VADNAIS, L. ....	1634	WILKINSON, Wm. ...	1538
TARANTINO, John ..	1688	VAIL, Charles ....	1606	WILLIAMSON, R. ...	1550
TAYLOR, Laird ....	1790	VAYSSIE, Paul ....	1982	WILSON, Robert ....	1950
TERMAN, T. ....	1618			WINKELMAN, R.E. ...	1758
TESIC, P. ....	1902	WAIT, Leon .....	1754	WISSEL, J. ....	1640
TESLAWSKI, G. ....	1824	WALKER, Lucius ...	1664	WOHL, Charles ....	1650
THATCHER, Mrs. A. .	1550	WALKER, W. ....	1516	WREN, G.S. ....	1776
THOMPSON, Don ....	1830	WALLAN, John ....	1550	WRIGHT, O.L. ....	1514
THOMPSON, L.C. ...	1550	WANG, Art .....	2188	WULFSBERG, G. ....	1550
THOMPSON, Lawrence	1720	WATT, Robert .....	1550		
TIMMNER, C. ....	1650	WEAVER, N. ....	2172	YAMAMOTO, Ken ....	1786
TRAMAGLINO, G. ...	1518	WEBER, Gary .....	1870	YOUNG, Charles ...	1792
TRENBERTH, R. ....	1836	WEBER, Mike .....	1620		
TRENTACOSTE, F. ...	1528	WEHRMEISTER, W.Jr.	2016	ZABIN, Burt .....	1996
TRIBBLE, Roger ...	1424	WEICK, Bill .....	1550	ZILM, R.L. ....	1550
TRIMMINGHAM, J. ...	1608	WEILER, J. ....	1512	ZINK, Paul .....	1660
TRITCH, M. ....	1856	WEINBERG, Frank ..	1712		
TROTTIER, L. ....	1638	WESTERGAARD, J. ..	1642		

\* \* \*

FINAL INTER-CLUB MATCH STANDINGS FOR THE 1964/1965 SEASON:

El Camino Real League:

	W	D	L	score
1. San Quentin	5	2	1	6 1
2. Mill Valley "B"	4	2	1	5 2
3. Pacific Heights	4	2	1	5 2
4. Caissa	3	2	2	4 3
5. Mill Valley "A"	2	2	3	3 4
6. San Bruno	2	0	4	2 4
7. Saint Francis	1	0	5	1 5
8. Kolty C. C.	0	1	6	$\frac{1}{2}$ 6 $\frac{1}{2}$

Peninsula League:

	W	D	L	score
1. Philidor	6	0	0	6 0
2. Stanford	5	1	1	5 $\frac{1}{2}$ 1 $\frac{1}{2}$
3. Burlingame/S-M	4	0	3	4 3
4. Westinghouse	3	2	1	4 2
5. Showalter	2	0	4	2 4
6. Lockheed	2	1	3	2 $\frac{1}{2}$ 3 $\frac{1}{2}$
7. Los Altos	1	0	4	1 4
8. Ampex	0	0	6	0 6

East Bay League:

	W	D	L	score
1. Knight Owls	7	1	0	7 $\frac{1}{2}$ $\frac{1}{2}$
2. Walnut Creek	5	1	2	5 $\frac{1}{2}$ 2 $\frac{1}{2}$
3. Stingers	5	1	2	5 $\frac{1}{2}$ 2 $\frac{1}{2}$
4. Knight Hawks	3	2	2	4 3
5. Berkeley YMCA	2	1	4	2 $\frac{1}{2}$ 4 $\frac{1}{2}$
6. Orinda	2	1	4	2 $\frac{1}{2}$ 4 $\frac{1}{2}$
7. Berkeley C.C.	2	1	4	2 $\frac{1}{2}$ 4 $\frac{1}{2}$
8. Hayward	2	0	5	2 5
9. Walnut Kernels	2	0	6	2 6

Expert League:

	W	D	L	score
1. K. E. Faughs	4	2	0	5 1
2. San Bruno	2	1	3	2 $\frac{1}{2}$ 3 $\frac{1}{2}$
3. Saint Francis	2	0	3	2 3
4. San Quentin	1	1	3	1 $\frac{1}{2}$ 3 $\frac{1}{2}$

In the semi-final match between El Camino Real champion SAN QUENTIN and Peninsula champion PHILIDOR, the two teams played to a draw. However, San Quentin had used an ineligible player, and his game was declared forfeit to his opponent. This, of course, gave the match win to Philidor, sending them into the deciding match against East Bay champion KNIGHT OWLS. The Knight Owls failed to appear (!) for the contest, thus losing by forfeit to the Philidor team.

\* \* \*

CFNC Asst. Field Administrator JERRY LONG has announced the formation of the Concord Chess Club. Weekly meetings will be held on Fridays at the Concord Recreation Center, 2974 Salvia, Concord.

A special feature will be the club's "junior program." Beginning October 22, (6:30-7:30 P.M.) a free lecture series will be made available to all interested high school students.

Prospective club members and interested juniors are asked to contact Jerry by mail at 4080 Poplar Avenue, Concord, or by phone, 682-3497, evenings.

\* \* \*

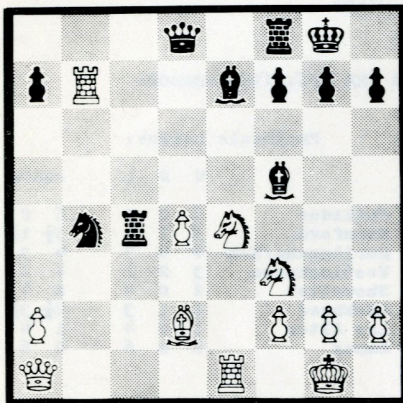


## "ERRARE HUMANUM EST ..."

The average chess fan usually has the impression that mistakes in chess are the exclusive province of "patzers," and that the games of masters and grandmasters are supposed to be free of these mishaps, and faultlessly conducted to a logical end.

However, actual tournament and match play shows that this is not always so, and that grandmasters are only human beings, with faults, errors and nervousness. As cases in point, study the following positions from the recent Marianske Lazne (Marienbad) Tournament:

STAHLBERG



KERES

The diagrammed position is complicated. Black is threatening 21...N-B7; winning at least the QP. White has little clock-time left, and must make another twenty moves. There followed 21.N-N3!, a very good move, simultaneously attacking both Black Bishops. Less favorable for White would have been 21.BxN, BxB; or even 21.N-B6+, BxN; 22.BxN, R-K1; and the second player has good compensation for his Pawn.

But the text move gives Black a difficult choice. He cannot now play 21...N-B7 because of 22.NxB, NxQ; 23.NxB+, K-R1; 24.RxN, and White's three pieces, in conjunction with his passed Pawn, are worth more than the Queen. So, the actual reply 20...B-K3 was practically forced.

Now I considered --- for a long time --- the continuation 22.Q-N1, N-B7; 23.R/1xB, PxR; 24.Q-N3, but then noticed that after 24...R-B3; 25.N-K5, Black has the strong reply 25...QxP!, threatening Mate. So, I dropped the idea of the exchange sacrifice, and continued 22.BxN?, and after 22...BxB;

I still had to play well to secure a draw. The continuation was 23.R-QB1, P-QR4; 24.RxR, BxR; 25.N-K5, Q-B1; 26.R-N6, B-Q4; 27.P-QR3, B-QB6; 28.Q-Q1, P-B3; 29.N-N4, Q-Q1; 30.R-N5, B-K3; 31.P-R3, Q-Q2; 32.P-QR4, R-Q1; 33.P-Q5, BxP; 34.N-K3, B-K3; 35.QxQ, RxQ; 36.N-K4, B-N5; 37.N-B5, and a draw was agreed.

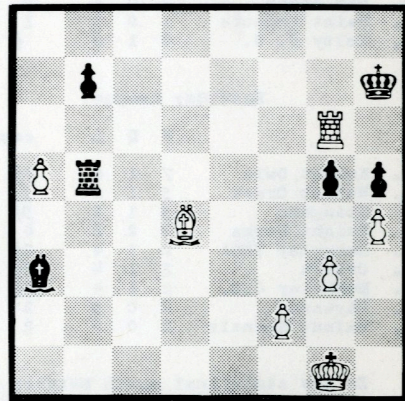
After the game was over, I still felt there was something better for White in the position, and analysis revealed the correct line. White would have obtained a decisive advantage by simply continuing 22.R/1xB!, PxR; 23.Q-K1, and it is easy to see that Black cannot protect both his Knight and KP. If 22...N-B7; then 23.Q-KB1! wins the necessary tempo.

Quite easy, everyone will say, but both grandmasters overlooked this rather obvious continuation.

\*

Even more embarrassing is the following example from the same tournament. After playing very well, Uhlmann had reached this position:

SHAMKOWITCH



UHLMANN

One can readily see that White has a technically easy win with 40.RxP, RxR; 41.PxR, etc., or 40.R-N7+, K-R3; 41.RxKNP, RxR; 42.B-K3, etc. With his opponent in time trouble and having more than forty minutes left on his own clock, Uhlmann made the incredible blunder 40.PxP??, and after 40...KxR; of course resigned. The reason is hard to find, but this case once more confirms that grandmasters, too, are only human.

\*

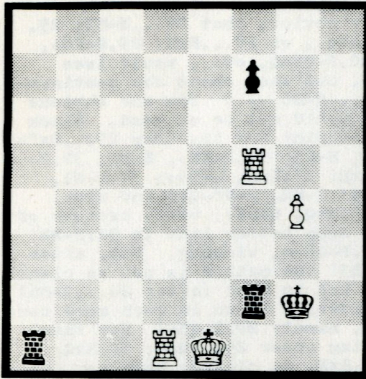






MISSED OPPORTUNITIES

Our first instance of an opportunity missed is illustrated below.



With Black to play, the game continued as follows:

- |         |       |
|---------|-------|
| 1. .... | RxR+? |
| 2. KxR  | RxR   |
| 3. PxR  | K-B6  |
| 4. P-B6 | K-B5  |
| 5. K-K2 | K-B4  |
| 6. K-K3 | KxP   |
| 7. K-B4 | ....  |

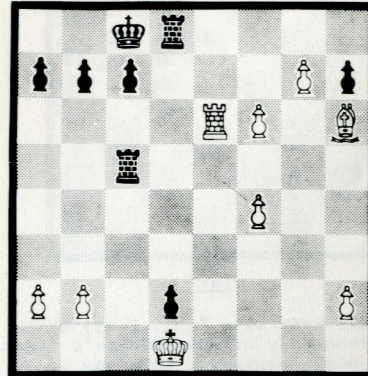
Arriving at a well known "book" position which is a draw. However, Black could have won very easily by playing instead:

- |         |       |
|---------|-------|
| 1. .... | R-B8+ |
| 2. RxR  | RxR+  |
| 3. KxR  | KxR   |

This leads to yet another well known position, but one which Black wins, because he holds the "opposition." This is just one more example of a King vs. King+Pawn ending where a working knowledge of the opposition

often means the difference between a win and a draw.

In our second example of a missed opportunity, White to play - resigned. However, he would have won by 1.R-Q6!



If Black replies 1...PxR; then 2.P-B7, after which White's passed Pawns on the K-side march on, and Black will be forced to give up both his Rooks for them. Black's only alternative (after 1.R-Q6) would therefore have been 1...RxR; and the continuation might have been:

- |            |          |
|------------|----------|
| 2. P-N8-Q+ | K-Q2     |
| 3. QxP+    | K-B3     |
| 4. Q-K4+   | K-N3     |
| 5. Q-N4+   | RESIGNS. |

White gives up his Queen for a Rook, and then advances his forward B-Pawn to be promoted. All Black can then do is surrender his remaining Rook for this promoted Pawn, after which White's other passed Pawns and extra piece will prove decisive.

\* \* \*

Newly-elected officers of the SAN BRUNO CHESS CLUB are: LOU KOREMS (Daly City), President; PRESTON MENDELL (Millbrae), Vice-President; HOWARD KLINE (San Bruno), Treasurer.

The club, which serves the entire north county, meets every Monday evening (7:30-11:00 P.M.) at Parkside School, 1801 Niles Avenue, San Bruno. Visitors are always welcome. Direct inquiries to:

PAUL A. ZINK  
728 Olive Court  
SAN BRUNO, CALIFORNIA

\* \* \*



CHESS FRIENDS of NORTHERN CALIFORNIA

OCTOBER OPEN

This tournament, which is being held in conjunction with the finals of the State Candidates' Tournament, is open to players of all classes. All entrants will receive an established rating.

**ELIGIBILITY:** Open to all who are (or will become) members of Chess Friends of Northern California. CFNC dues are \$3.00 per year, which includes a one year subscription to CHESS IN ACTION.

**PLACE:** Berkeley Y.M.C.A. 2001 Allston Way, Berkeley 4, California.

**DATE:** October 30/31, 1965. Registration by form (below) or at YMCA from 10:00 A.M. until 12:00 noon on Saturday, October 30. The players' meeting will commence at close of registration, and the 1st round will start at 12:30 P.M. on Saturday.

**TYPE:** 5-round Swiss System, with "Expert/A," "B" and "C" divisions.

**ENTRY FEE:** \$4.00 for paid-up members of CFNC. \$7.00 for non-members.

**PRIZES:** Book prizes will be awarded in each section. There will also be many "surprise" prizes and trophies.

**SUNDAY SPECIAL:** There will be a "Sunday Special" tournament on Sunday, October 31. Registration from 10:00 A.M. until 12:00 noon. Entry fee is \$2.00, plus CFNC membership. A prize will be awarded in each 4-player section.

-----  
to: Mrs. Virginia McGinley Oakland, California  
2763 Chelsea Drive phone: 531-0358

PLEASE ENTER ME IN THE CFNC "OCTOBER OPEN" TOURNAMENT. I AM A CLASS \_\_\_ PLAYER

name: \_\_\_\_\_ phone: \_\_\_\_\_

street address: \_\_\_\_\_ city: \_\_\_\_\_

enclosed is \$4.00 for CFNC member ( ) --- \$7.00 for non-member ( ) CHECK ONE

-----





Martin Morrison  
8009 Fontaine St  
Oakland, Calif 94605



## Join the Best with the Rest ...

With Chess Friends of Northern California (affiliated with the U. S. Chess Federation) YOU

### Play and promote chess!

There is a Chess Club near your home . . . play chess against players of all strength.

Member leagues provide plenty of inter-club action for players of all classes.

Tournaments are held periodically for all players . . . good, average and beginners.

Chess Festivals, combining outdoor play and family picnics are held several times each year.

All participating members are rated!

"Chess In Action" the printed magazine, issued four times a year, gives all the news and activity, games, stories, pictures and announcement of the chess life of CFNC and its members.

YOU MEET NEW FRIENDS. YOU HELP PROMOTE CHESS.

YOU WILL ENJOY CHESS MORE WHEN YOU JOIN C F N C.

JOIN NOW

