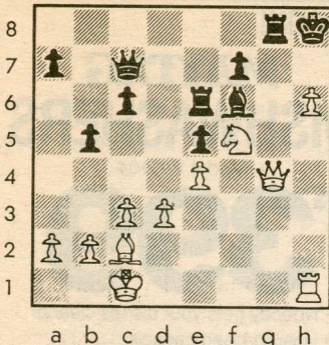


Chess



By Frisco Del Rosario
CAPABLANCA-CARTER
White to play and win.



SAN CARLOS/AUSTRALIA TELEPHONE MATCH THIS FRIDAY

Two young chessplayers from San Carlos and Croydon, Australia, hook up via telephone Feb. 22 for the annual Sister City Chess Competition to be held at San Carlos City Hall at 333 Elm St. Last year, more than 20,000 Croydon residents showed up to watch the schoolchildren who acted out the moves on a lifesized chessboard.

LOCKHEED CLASS CHAMPIONSHIPS COMING IN MARCH

The 27th annual Lockheed Recreation Association Peninsula Chess Championships will be held March 2-3 in Sunnyvale, offering \$3,650 in prizes. For information (408) 742-3126.

THE STREAK

Quick, what's the greatest streak in sports history set by a guy named Joe?

Before you yawn "Joe DiMaggio's 56-game hitting streak," consider this: 75 years ago this month, grandmaster Jose Capablanca began a streak of eight years and 63 games in which he did not lose a game.

If you're the type to harumph that Joltin' Joe could've gone 1-for-5 every day and Capablanca might've been beating pansies, know that DiMaggio hit .408 during his streak and Capablanca wrested the world championship away from Emmanuel Lasker during his.

However, DiMaggio eventually went "ohfer" against Indian pitchers Jim Bagby, Jr., and Al Smith, and Capablanca, too, finally went "ohfer one" March 22, 1924.

New York 1924

White: Richard Reti

Black: Jose Capablanca

Reti Opening

- | | | | | | |
|-----|------------------|------------------|-----|------------------|------------------|
| 1. | Nf3 ¹ | Nf6 | 17. | Qc3 ⁶ | ed4 |
| 2. | c4 | g6 | 18. | ed4 | N6d7 |
| 3. | b4 | Bg7 | 19. | Qd2 | cd4 |
| 4. | Bb2 | 0-0 | 20. | Bd4 | Qc4 |
| 5. | g3 | b6 | 21. | Bg7 | Kg7 |
| 6. | Bg2 | Bb7 ² | 22. | Qb2 | Kg8 |
| 7. | 0-0 | d6 | 23. | Rd6 | Qc5 |
| 8. | d3 | Nbd7 | 24. | Rad1 | Ra7 |
| 9. | Nbd2 | e5 | 25. | Ne3 ⁷ | Qh5 |
| 10. | Qc2 | Re8 | 26. | Nd4 | Bg2 |
| 11. | Rfd1 | a5 | 27. | Kg2 | Qe5 ⁸ |
| 12. | a3 ³ | h6 | 28. | Nc4 ⁹ | Qc5 |
| 13. | Nf1 ⁴ | c5 | 29. | Nc6 | Rc7 |
| 14. | b5 | Nf8 | 30. | Ne3 | Ne5 |
| 15. | e3 ⁵ | Qc7 | 31. | R1d5 | Resigns |
| 16. | d4 | Be4 | | | |

NOTES:

- Reti was greatly responsible for proving the notion that control of the center could be achieved by observing it from afar as well as directly occupying it.
- All four bishops assume posts where they can influence the center from a distance.
- Not 12.b5 because Black could then post a knight strongly on c5.
- Black should take advantage of this move and play 13...e4, extending the line for his rook.
- Planning to break the center open with d4.
- Black sees White's queen on the same diagonal as his bishop and exchanges pawns to give the bishop more mobility.
- Reti points out the threat 26.Ng4 Kh7 27.Rd7! Nd7 28.Rd7 Rd7 29.Nf6.
- 27...Re3 28.fe3 Qd1 29.Nf5! wins (Reti).
- Surrounding the black queen.

SOLUTION: 1.Qg7! wins (1...Bg7 2.hg7 mate; 1...Rg7 2.hg7 Kg8 3.Rh8 mate).

PLACES TO PLAY

Burlingame Chess Club: Meets Thursdays, Lions Club, 990 Burlingame Ave. USCF tournaments, informal play. Wilfred Goodwin 593-0054

Palo Alto CC: Tuesday eves, days Sat. and Sun. 3800 Middlefield. USCF and blitz events, informal play. 329-2487.