

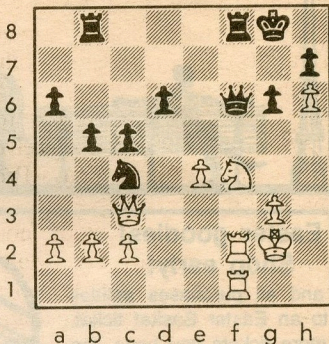
# Chess



By Frisco Del Rosario

## HANSEN-CLARK

White to play and win.



### CHESS CHAMP CONTINUES TO CONFOUND COMMUNISTS

The April issue of *Penthouse* magazine reports that world chess champion Garry Kasparov, a Soviet Jew, is having the Declaration of Independence translated into Russian. Kasparov leads the Democratic party in the USSR and perhaps will utilize the document in his platform during the Soviet parliament's 1992 election.

Kasparov has previously disturbed the status quo by forming the Grandmasters Association, which wrested government of the world championship title away from FIDE, the international chess federation.

### BURLINGAME CHESS CLUB TO HOLD ACTION CHESS EVENT MARCH 21

The Burlingame Chess Club will conduct a World Rapid Chess-sanctioned action chess (30 minutes per player per game) quadrangular beginning 7:30 p.m. March 21 at 990 Burlingame Ave.

### TWO SHARE TOP LERA PRIZE

International master John Donaldson of Seattle, Wash., and senior master Renard Anderson of Aptos, Calif. shared first place in the open division of the LERA Peninsula Class Championships held March 2-3 in Sunnyvale. Each earned \$400 in prize money.

Jim Hurt and Ted Yudacufski directed 176 players in six sections. They awarded \$3,660 in total prizes along with one brilliancy prize in each division.

Alfred Hansen, 65, of Hillsborough won the brilliancy award in the "B" division. Hansen has been a governing member of the Burlingame Chess Club for 25 years and serves as comptroller of the Kolty Chess for Youth Foundation, which has taught 2,200 San Mateo County schoolchildren to play chess.

### Sunnyvale 1991

White: Sanda Oliver

Black: Alfred Hansen

King's Indian Defense

- |                          |                            |
|--------------------------|----------------------------|
| 1. d4 Nf6                | 18. Bc2 h5                 |
| 2. Nf3 d6                | 19. Qf3 Bf6                |
| 3. e3 g6                 | 20. a4 a5 <sup>4</sup>     |
| 4. Bd3 Bg7               | 21. Kh1 Kg7                |
| 5. e4 <sup>1</sup> 0-0   | 22. Ng3 Rh8                |
| 6. 0-0 Nbd7              | 23. Ne2 Ne2                |
| 7. Re1 e5                | 24. Qe2 g5                 |
| 8. c3 a6                 | 25. Kg1 <sup>5</sup> g4    |
| 9. Bg5 h6 <sup>2</sup>   | 26. hg4 hg4                |
| 10. Be3 b6               | 27. Bd1 <sup>6</sup> Rh2!  |
| 11. h3 Re8               | 28. Kh2 Qh8                |
| 12. d5 Nc5               | 29. Kg1 Qh4 <sup>7</sup>   |
| 13. Bc5 bc5              | 30. Qe3 Rh8                |
| 14. Nbd2 Nh5             | 31. Kf1 Qh1                |
| 15. c4 Bd7               | 32. Ke2 Qg2                |
| 16. Nf1 Qc8 <sup>3</sup> | 33. Bc2? <sup>8</sup> Rh3! |
| 17. N3h2 Nf4             | 34. Resigns                |

### NOTES:

- White could have accomplished this in one step by playing Nc3 at move two or three.
  - For a few turns White marks time while Black gets his pieces out.
  - Black has aimed his pieces at the kingside and White will make a few more undeveloping moves.
  - Black allows no further expansion. The focus shifts back to the kingside.
  - Stepping off the h-file because he sees that his knight will be pinned after the forced pawn exchange.
  - Perhaps White has fallen into a trap: the g-pawn is lost (27...Rh4 28.g3).
  - Protects the prized g-pawn and threatens to double heavy pieces on the h-file.
  - White would like to play Qg3, forcing the trade of Black's menacing queen. He first protects his e-pawn, but misses Black's veiled threat. White's best try is 33.Ra3 Rh3 34.Qh3 gh3 35.Rg3 Bg4 36.Kd3 Qf2 37. Rg4 Kf8, and Black must work to queen his h-pawn.
- SOLUTION:** 1.Nd5! wins (1...Qc3 2.Ne7 Kh8 3.Rf8 Rf8 4.Rf8 mate).