

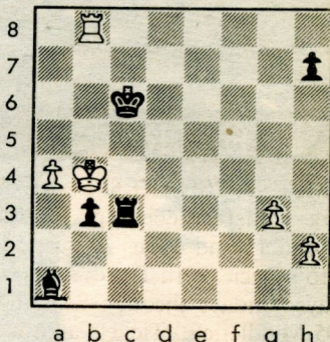
Chess



By Frisco Del Rosario

FISCHER-TAL

Black to play and win.



a b c d e f g h

GRANDMASTER AUTOBIOGRAPHIES

Would you consider any of your losses to be among your best games? Have you played your very best chess in a fierce struggle only to come up one move short?

Everyone has, but grandmasters never admit to it in their autobiographies. For instance, Jose Capablanca goes 35-0 in *My Chess Career*, Mikhail Tal is 98-0-2 in his *Life and Games* (at least he included two draws!) and Mikhail Botvinnik is a neat 100-0 in *One Hundred Selected Games*.

American world champion Bobby Fischer admirably included nine draws and three losses in his *60 Memorable Games*, resulting in some of the only favorable attention he ever received. Fischer was notoriously difficult to deal with — he forfeited his title to Anatoly Karpov in 1975 in a dispute over match conditions and hasn't played since.

Skopje 1967

White: Bobby Fischer

Black: Yefim Geller

Sicilian Defense

1. e4 c5
2. Nf3 d6
3. d4 cd
4. Nd4 Nf6
5. Nc3 Nc6
6. Bc4¹ e6
7. Be3 Be7
8. Bb3 O-O
9. Qe2 Qa5
10. O-O-O² Nd4
11. Bd4 Bd7
12. Kb1 Bc6
13. f4 Rad8
14. Rhf1 b5
15. f5³ b4
16. fe bc
17. ef Kh8⁴
18. Rf5 Qb4⁵
19. Qf1⁶ Ne4
20. a3?⁷ Qb7
21. Qf4 Ba4
22. Qg4 Bf6
23. Rf6 Bb3!
24. Resigns⁸

NOTES:

1. Fischer enjoyed great success with this aggressive bishop development against the Sicilian.
2. As in this game, it often becomes a race to checkmate when opponents castle on opposite wings.
3. It's a matter of whoever gets there first, so White doesn't waste a move on the prophylactic a3 and sacrifices his knight.
4. 17...Rf7 18. Bf7 Kf7 19. Qc4 wins. (Fischer)
5. Ties the rook down to the defense of the bishop, delaying White's plan of Rdf1 and Rf6!
6. With the same idea of Rf6. Both Qf2 and Qf3 allow the capture of the e4 pawn with tempo.
7. White loses one tempo and with it the game. Fischer gives 20. Qf4! (threatening Rh5 followed by Bg7) as the right way to continue the attack. One win goes 20...d5 21. Qe5 Nf6 22. Rf6 Bf6 23. Qf6! Prettier still is 20...Nd2 21. Rd2 cd 22. c3! Qb3 23. Bg7 Kg7 24. Qg4 Kh8 23. Qd4.
8. Meeting the threat of 24...Ba2 with mate to follow loses the rook.

SOLUTION: 1...b2 2. Kc3 b1Q wins.

PLACES TO PLAY

Redwood City Chess Club: Meets Mondays, First Baptist Church, James and Hudson. Informal games. John Vitlacil 367-9368.

Burlingame CC: Meets Thursdays, Lions Club, 990 Burlingame Ave. USCF tnmts, informal play. Wilfred Goodwin, 593-0054.

Palo Alto CC: Tuesday eves, days Sat. & Sun. 3800 Middlefield. USCF & blitz tnmts, informal play. Steve Farmer, 329-2487.

We welcome your games, positions and comments.