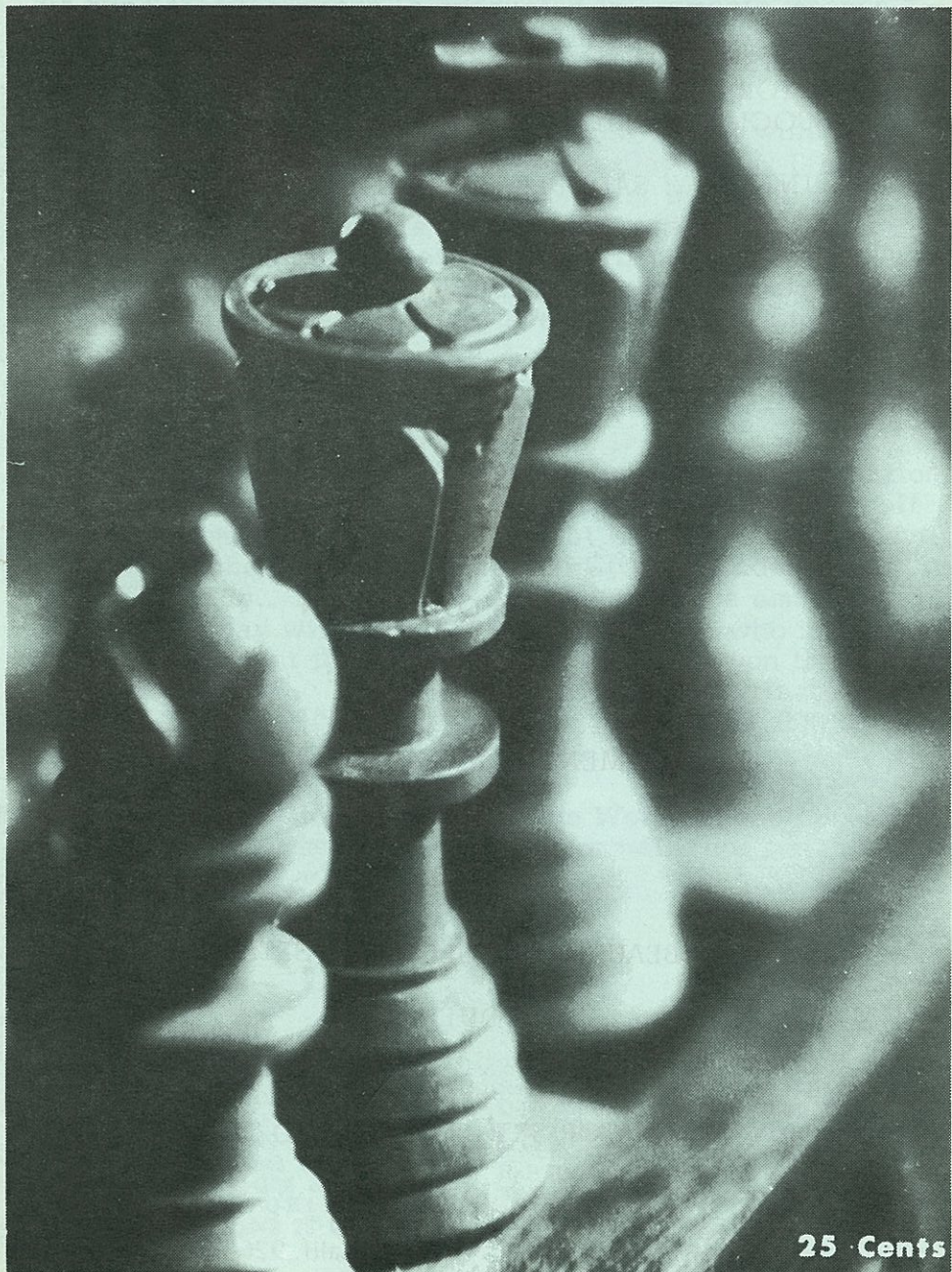


# GAMBIT



MARCH 1975



25 Cents



# GAMBIT

## ORANGE COUNTY CHESS MONTHLY

PUBLISHER: THE CHESS COLLECTION

EDITOR: ROBERT HOBBS

ASSOCIATE EDITOR: BARBARA HOBBS

PRINTED BY: SADDLEBACK PRINTERS & GRAPHICS

for subscription information call 997-9140



THE CHESS COLLECTION

COMPLETE LINE OF

TOURNAMENT SETS BOARDS & CLOCKS

BOOKS

BEAUTIFUL COLLECTOR SETS

ANTIQUES

DECORATOR SETS BOARDS AND TABLES

415 S. Main Street    Orange, Calif. 92668

# World Championship 1975

Spassky and Fischer did more to promote and popularize chess in the 1972 championship than has any other person or event in the history of the game. The stage is now being set for another similar clash, Russian vs American. Let us hope that the match is conducted in a smooth manner and that both participants play in the spirit that the game is intended. (Too much to ask?)

Anatoly Karpov defeated Viktor Korchnoi with 3 wins 2 losses and 19 draws to be eligible to play Bobby Fischer in June for the championship. However, as of the Feb. issue of chess life and review nothing official has been stated as to whether or not Fischer will play. Several articles appeared in local newspapers that vaguely hinted that he would. But I have yet seen any official statement.

If Fischer does not make a statement by April 1, the title will be awarded to Karpov.

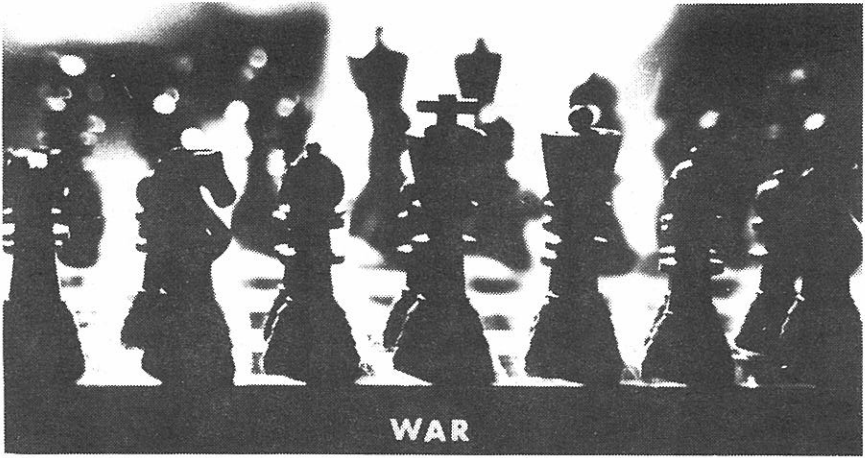
Fischer resigned his "FIDE" title in June but the resignation was not accepted. The whole mess reeks of publicity. If indeed the match is held it will be at Manila, Phillipines. Bids were taken on Jan. 1. Mexico City pretended to bid with \$387,500. Milan Italy didn't want to be embarrassed but was anyway with only \$426,250. Manila who has held several important tournaments successfully, won the bid with \$5,000,000. The \$5,000,000 will be distributed as follows- \$3,125,000 to the winner and \$1,855,000 to the "loser?"

With several million dollars and the World Chess Championship at stake. I think there will be a match, And it should be a good one.

## Game 17

**Korchnoi-Karpov:** Catalan: 1 P-Q4 N-KB3 2 P-QB4 P-K3 3 P-KN3 P-Q4 4 B-N2 PxP 5 N-KB3 P-B4 6 O-O N-B3 7 Q-R4 B-Q2 8 QxBP PxP 9 NxB R-B1 10 N-QB3 Q-R4 11 R-Q1 B-K2 12 N-N3 Q-B2 13 N-N5 Q-N1 14 N-B5 P-QR3 15 NxB NxN 16 N-B3 N/2-K4 17 Q-QR4 O-O 18 B-B4 Q-R2 19 QBxN NxB 20 Q-K4 N-B3 21 R-Q7 B-B3 22 QR-Q1 Q-N3 23 Q-B2 N-R4

24 R/1-Q3 P-R3 25 P-QR3 R-B2 26 P-QN4 RxR 27 RxR R-B1 28 R-Q3 N-B5 29 N-K4 Q-B2 30 N-B5 N-K4 31 R-Q2 P-QN3 32 P-B4 PxN 33 PxN QxP 34 B-N7 R-B2 35 Q-K4 Q-R8ch 36 K-N2 QxP 37 PxP RxP 38 R-Q3 Q-R4 39 Q-B3 Q-N3 40 R-Q7 R-B4 41 Q-N4 Q-B7ch 42 K-R3 P-N3, White resigns.



Across an open field, campfires burn throughout the night.  
And men we do not know nor love nor hate  
Are now just shadows at a distance while we wait.  
Dawn's battle will not bring wrong nor right  
But will make of some men cowards and some heroes,  
Yet sadder things it makes of women-widows.



Chess yields us, when we need them most  
companions for our loneliness- Mu'Tazz



Chess is as much a mystery as women. -Purdy

## Orange Countians Invade Congress

The National Chess Congress, one of Southern California's major tournaments was recently held on February 15, 16, and 17. The six round event boasted such names as Canadian Champion Peter Biyayas and senior master Kim Commons. It was a very strong tournament and Orange County was well represented. Orange County's top three players, Robert Snyder (2290), William Batchelder (2225), and Robert Gaunt (2206) all competed for top places in the tournament. Throughout the tournament there was no sign of a clear winner, so the last round promised to be interesting. Commons who lost two games in a row withdrew from the tournament. This left David Strauss (a strong master from Riverside and California State Champion) with a half point lead over the field.

Strauss found himself across the board from Robert Snyder in the last round. After only five moves Strauss offered a draw—Snyder accepted. This gave Strauss a tie for first with a 5-1 score and Snyder a tie for third at 4 and a half-1 and a half. On second board it was Gaunt vs Biyayas, after a long game Biyayas scratched up a win in the endgame. This also gave Biyayas a 5-1 score and a tie for first. Batchelder scored a win in the final round giving him a tie for third with Snyder. The only other Orange County player was Richard Glass an expert who won in fine style against master Nick DeFirmian in the final round.

Out of the 34 players in the tournament only 4 were from Orange County and we had two of them place in the tournament winning prizes.

**SPG** SADDLEBACK  
& PRINTERS &  
GRAPHICS

*IF AN IDEA IS WORTH THE PAPER IT'S  
PRINTED ON,  
IT'S WORTH CALLING SP&G.*

*OPEN SATURDAYS*

417 SOUTH MAIN STREET • ORANGE, CA. 92668  
(714) 997-2820

# CHESS BOOM

By USCF MASTER  
Robert M. Snyder

During and after the 1972 Fischer-Spassky match there was a tremendous boom in chess. Everyone went wild stores couldn't stock enough sets, the local chess clubs couldn't handle the crowding of people. The match was a front page item.

Now with Bobby Fischer to play Karpov in Manila for the World Championship title you can be sure that the \$5,000,000 match will be even more popular. It is time to get ready; buy your books, take instruction, join your local club now and have the advantage of the head start. Of course knowing Bobby Fischer means that anything can happen, but what ever does happen will be a boost to American Chess.

The following game is from the 1973 Greater Los Angeles Open which was the Region 8 Championship (Western U.S.). The over 250 player tournament was a product of the 1972 match. The game gave me a 5-0 score to tie for first place in the tournament.

White- Robert Snyder      Black- H. Gordon (2200)

1.P-K4 P-K4  
2.N-KB3 N-QB3  
3.B-B4 N-B3  
4.P-Q4

I have played the more natural N-N5 with some of these possibilities, 4... P-Q4 5.PxP N-QR4 or 5...

**NxP 6.P-Q4 PxP 7.O-O B-K2?**  
8.NxBP KxN 9.Q-R5ch was one of my blind fold games.

4..... QNxP?  
5.NxN?!

Here 4...PxP is the book move. Even better is 5. Bxpch KxB

6.Nxpch and 7. QxN with a won game

5.....PxN  
6.QxP

Now white has far superior control of the center;his well placed pieces guarantee him a lasting advantage.

6.....P-Q3  
7.B-KN5 B-K2  
8.N-B3 O-O

9. O-O-O N-K1

The passive move is played with the idea of exchanging of the bishops to go into the endgame and take away whites pressure. The attempt however, is simply unsound.

10. BxB QxB

11. N-Q5 Q-K4??

Black had to play 11.....Q-Q1 to withstand the white pressure.

12. QxQ PxQ

13. N-K7 ch! K-R1

14. R-Q8! P-QN4

What else?

15. B-Q5 RESIGNS

My opponent just sat there looking at the board in disbelief at the hopelessness of the position, thought for about ten minutes (as hundreds of dollars were behind the game)



## CHESS INSTRUCTION

by  
USCF MASTER  
ROBERT SNYDER

Offered to adults Wednesday 7-10 PM  
starting April 2 at Valley High School  
1801 s. Greenville St. Santa Ana rm. D-5  
for registration call 714/979-5284

also call about private lessons

531-3643



# On Passing

by Cal Olson

Since my club planned a tournament to be called the Oldrich Duras Open one of the questions I've been asked frequently is, "Who is Oldrich Duras?"

To quote Edward Lasker from his book Chess Secrets, "...Duras, one of the strongest players of the last generation, who, strange to say, is almost unknown to the younger American players of today."

Duras was born near Prague in Czechoslovakia on October 30, 1882. In his first international tournament at Hilversum in 1903 he placed second, half a point behind the winner Paul Leonhardt. At Barmen in 1905 Duras tied for first with Akiba Rubinstein in the Hauptturnier A division.

In 1906 Duras had two important successes: Ostend where he won the double round Rice Gambit Tournament and, more important, at the very strong tournament in Nurnberg where he placed second behind Frank J. Marshall but ahead of such names as Schlechter, Tchigorin, Tarrasch, Vidmar, and Spielmann.

At Vienna in 1907 Duras had to be content with another second place, this time below Jacques Mieses. But in 1908 he won two strong tournaments: in Vienna where he tied for first place with Geza Maroczy and Karl Schlechter.

His reputation as a player was then firmly established. Duras was considered to be a likely candidate for the World Championship.

In the famous St. Petersburg tournament of 1909 Duras tied with Spielmann just below the co-winners Emanuel Lasker, who was at that time the World Champion, and Rubinstein.

The Seventeenth Congress of the German Chess Federation held at Hamburg in 1910 was an important tournament. Duras placed second, a half point behind Schlechter but winning their individual game, in a field that included most of the strongest Masters of the day.



During 1911 Duras seems to have experienced a slump being able only to tie for eighth thru eleventh places at Carlsbad and tying for thirteenth at San Sebastian . And in early 1912 at San Sebastian he was able only to finish in seventh place .

But in 1912 he reasserted himself by tying for first with Rubinstein at Breslau against formidable opposition .

Duras was playing in the tournament at Mannheim in 1914 which was interrupted by the start of the First World War . After this he retired permanently from active play , although he continued to compose chess problems and endgame studies for which he became well known .

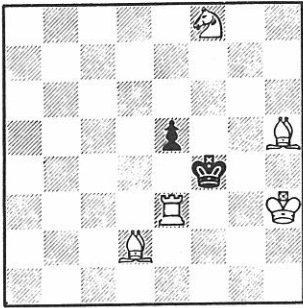
He was awarded the title of International Grandmaster by the World Chess Federation (FIDE) in 1950 .

He died on January 5 , 1957 in Prague .

<b>KODIAK</b>		<b>GLASS CO.</b>
533-6241		533-7462
<i>Cal Olson</i>		
916 N. ANAHEIM BLVD., ANAHEIM		

"Chess like love, like music has the power to make men happy" -Tarrasch





White mates in two

LDN



WANT ADS

---

Engine tune up-at your home \$8.50+ parts  
(plugs and points)call 839-1855 ask for Eddie

---

Hand carved ivory chess set from India  
This is an antique with fine detail call  
The Chess Collection 997-9140

---

Antique wooden chess clock from Germany  
dated 1885 and it still works call  
The Chess Collection 997-9140

---

Indian artifacts: mounted in display case  
for wall hanging. \$90 call 830-9386 after 6PM

---

New electric mimeograph machine, complete  
with supplies & paper \$249 call 997-2820

EXPERT PIPE REPAIR

Telephone (714) 542-8752

Lawrence  
Pipe  Shoppe

5 Town & Country  
Orange, California

Your Tobacconist  
**GEORGE BAMBER**

In the future this page will be reserved for letters received by the editor. Whether it be a comment, opinion, or a question to be answered, feel free to send them in.



Read International Grandmaster Isaac Kashdan's Chess Column in the Sunday edition of the Los Angeles Times.



In our next issue we will post the top 50 players (by USCF rating) in Orange County. If you think you should be on it, send in your name and rating.



Please send in your favorite recorded games. We will attempt to publish as many as possible.



Patronize those who advertise in Gambit they are paying for this magazine.



*Ceramics*

*Nostalgia Ceramic Shoppe*

10551 BOLSA AVENUE,  
GARDEN GROVE, CALIFORNIA 92643

(714) 554-3641

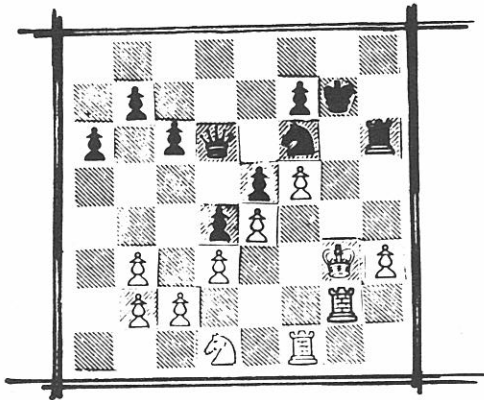
# SIMUL

Sunday afternoon February 9th at the Chess Collection master Robert Snyder conducted a simultaneous chess exhibition. Although the rain that day did keep many at home, 16 anxious chess players did weather the storm.

Only one challenger, Robert Messenger rated 1520 defeated the master. When asked about his victory he humbly replied that he was just lucky. Lucky indeed, Messenger played a very strong game along sound but aggressive lines. The game went as follows-

White- Snyder      Black- Messenger

1.P-K4 P-K4 2.N-KB3 N-QB3 3.B-B4 B-B4  
4.P-Q3 P-KR3 5.N-QB3 N-KB3 6.B-K3 BxB  
7.PxB P-Q3 8.0-0 B-Q2 9.Q-K1 0-0  
10.N-KR4 B-K3 11.B-N3 N-K2 12.Q-N3 K-R2  
13.N-B5 NxN 14.PxN BxB 15.RPxB Q-K2  
16.P-K4 P-R3 17.Q-R4 P-B3 18.P-KN4 P-KN4  
19.Q-N3 R-KN1 20.K-B2 P-Q4 21.K-B3 QR-K1  
22.QR-Q1 Q-B4 23.R-Q2 P-KR4 24.PxRP P-N5ch  
25.K-K2 R-N4 26.P-R3 P-Q5 27.N-Q1 QR-N1  
28.Q-R4 P-N6 29.P-R6 Q-Q3 30.K-B3 R-R4  
31.QxP RxQ 32.KxR RxP (R3) 33.R-N2 K-N2



34.K-R2ch K-B1 35.R1-N1 N-R4 36.R-N8ch K-K2  
37.N-B2 N-B5 38.R1-N7 Q-KB3 39.N-N4 RxBch  
40.K-N1 Q-R5 41.P-B6ch K-Q3 42.R-Q8ch K-B4  
43.N-B2 QxP 44.RN7-N8 R-R4 45.N-N4 R-N4  
46.K-R2 RxN 47.R-Q5ch PxR 48.RESIGNS





After the exhibition Robert stayed for some blitz games. Snyder will conduct another simultaneous exhibition at the Chess Collection March 30. Call 997-9140

## **GAMESMANSHIP**

IN SOUTH COAST VILLAGE

MERCANTILE BUILDING

*Adult, Family & Party Games & Gifts*

ACROSS FROM  
SOUTH COAST PLAZA

3850 SO. PLAZA DR.  
SANTA ANA, CA 92704  
(714) 557-2447

MR. SAM HAMO, OWNER OF THE GAMESMANSHIP,  
ALSO CARRIES CHESS SETS, BOOKS AND CLOCKS.

# TOURNAMENTS

March 7-May

## WEST COVINA SWISS CHEESE

10-SS (rds. optional), 40/2, Mesa School, Baranca s. of San Bernardino Fwy., W. Covina. EF: \$1 per game, under 20 75¢, under 15 50¢; W. Covina CC members all 25¢ off. Prizes per entries. Reg. 7-8 PM any Fri., rds. 8 PM Fridays 3/7, 3/14, 3/21, 3/28, 4/4, 4/11, 4/18, 4/25, 5/2, 5/9. Six games qualify for prizes. ENT: W. Covina CC, 717 E. Laurel Ave., Glendora, CA 91740.

March 9 (Cal.)

## LOS ANGELES MARCH QUAD

3-RR, 40/90. Quality Inn Airport, 5249 W. Century Blvd., Los Angeles. EF: \$8.75 if mailed by 3/2, \$10 at door. \$20 1st in each section. Reg. ends 9 AM, rds. 9:30-1:30-5 (earlier if agreed). \$3 fine for quitters. **Read CCA Information ad.** ENT: Continental Chess Assn., 450 Prospect Ave., Mt. Vernon, NY 10553. **NS.**

March 15-16 (Cal.)

## NEWPORT BEACH SPRING OPEN

5-SS, 40/90 (40/2, rds. 4, 5), Ensign Middle School Cafeteria, 2000 Cliff Dr., Newport Beach. In 2 sections: **Open**, EF: \$20, under 21 \$15. \$5 150-75, A 50, B/below 50; trophy to 1st. **Booster**, Open to under 1600. EF: \$15, under 21 \$11. \$5 75-45-30, D/below 30, Unr. 30; trophy to 1st. **Both**, all EF \$5 less if by 3/12. Prizes based on total of 60 entries. Reg. 8:30-9:30 AM, rds. 10:2-3:07, 9:30-3:30. ENT: Newport Beach CC, Box 1872, Newport Beach, CA 92663.

March 23 (Cal.)

## 10th CCA LOS ANGELES QUAD

3-RR, 40/90. City of Commerce Hyatt House, Telegraph Rd. at Washington Blvd. Exit of Santa Ana Freeway, Los Angeles. EF \$8.50 if mailed by 3/15, \$10 if paid at tmt. \$20 1st prize in each section. Reg. ends 9 AM 3/23; rds. 9:30-1:30-5 (earlier by agreement). \$3 fine for quitters. **Read CCA Information ad.** ENT: Continental Chess Assn., 450 Prospect Ave., Mt. Vernon, N.Y. 10553. **NS.**

March 8-9 (Cal.)

## BOGEDA BOGEDA OPEN

5-SS, 40/100, Wardlow School, 9191 Pioneer Dr., Huntington Beach. In 2 sections: **Open**, EF: \$25, \$5 less if in advance, under 21 \$3 less. \$\$ (based on 50 entries) 200-100, trophy to 1st. **Booster**, open to under 1600 and unrated. EF: \$23, \$5 less if in advance, under 21 \$3 less. \$\$ 100-75-50; Unr. 40; trophy to 1st, jr. under 17. **All**, Reg. 9-9:45 AM, rds. 10-3-7, 10-3. EF free to farthest traveler. Add'l class prizes as entries permit. ENT: Fountain Valley CC, 17173 Reimer St., Fountain Valley, CA 92708.

March 12, 19, 26 (Cal.)

## NEWPORT BEACH SPRING QUAD

3-RR, 40/90, Ensign Middle School Cafeteria, 2000 Cliff Dr., Newport Beach. EF: \$5, under 21 \$3; Newport Beach CC mem. req. (\$2). \$\$ 10 to top each quad. Bonus \$\$ per entries for perfect scores. Reg. 7-7:30 PM 3/12, rds. 8 PM each date. ENT: Newport Beach CC, Box 1872, Newport Beach, CA 92663.

March 22-23 (Cal.)

## 3rd Annual PACIFIC COAST OPEN

5-SS, City of Commerce Hyatt House, Telegraph Rd. at Washington Blvd. Exit of Santa Ana Freeway, Los Angeles 90040. In 2 sections: **Open**, 40/2 (rounds 1-2 40/100), open to all. EF \$14.50 if mailed by 3/15, \$18 if paid at tmt. Prizes \$200-100-50, A or Unr 80-40, Under-1800 80-40. Reg. ends 9 am 3/22; rds. Sat. 10-3-8, Sun. 10:30-4:30. **Reserve**, 40/90, open to all under 1600 or unrated. EF \$13.50 if mailed by 3/15, \$17 if paid at tmt. Prizes \$120-60-40, DE 70-30, Unr 60-30. Reg. ends 8:15 am 3/22; rds. Sat. 9-1:15-5:30, Sun. 9:30-2:30. **Both**: Deduct \$5 from EF if staying at Hyatt House 3/22 (limit 1 deduction per sleeping room). HR approx. 19-25. ENT: Continental Chess Assn., 450 Prospect Ave., Mt. Vernon, N.Y. 10553. **NS.**

GARDEN GROVE CHESS CLUB - March 3, 10, 17th (Monday)  
MARCH QUAD. 3 Round. - Round Robin. Entry Fee \$4.00.  
USCF rated Tournament. Trophy to 1st in each section.  
Call 827-7405.

CHESS COLLECTION - Speed Tourney - cash and  
merchandise awards - March 9th. Call 997-9140.

SIMAL - Snyder - March 14 Garden Grove Chess Club.  
827-7405.

MARCH 18 - TOURNAMENT ASSOCIATES OPEN (five  
Tuesdays) 5 round Swiss. E.F. \$5 (at 2400 N. Canal,  
Orange).

MARCH 22 and 24 - ELEMENTARY, JUNIOR HIGH, AND  
HIGH SCHOOL INDIVIDUAL CHAMPIONSHIPS. Grades K-6  
on March 22; Grades 7-12 and USCF QUADS on March 24.  
Registration on both days at 8:30 a.m. Marina High School,  
15871 Springdale (at Edinger), Huntington Beach. Entry  
Fee: \$1.00, includes a snack (hot dog, milk, potato chips)  
and membership in Orange County Chess Association.

# CLUBS

NEWPORT BEACH CHESS CLUB meets Wednesdays from 7-11 p.m. at Horace Ensign Middle School, 2000 Cliff Dr. (at Irvine) in Newport Beach. For information call Tom Twaiten at 644-2928.

LA HABRA CHESS CLUB meets Wednesdays 7-10 p.m. at La Habra Recreation Center at the Civic Center, Euclid and La Habra.

FOUNTAIN VALLEY CHESS CLUB meets Tuesdays 7-10 p.m. at the Fred Maiola School on Finch Ave. (just S.W. of the corner of Brookhurst and Ellis). For information, phone Alan Worrell at 963-3697.

THE GARDEN GROVE CHESS CLUB meets Mondays and Fridays 7-10 p.m. at the Cook Elementary School, 9802 Woodbury Road, Garden Grove. For information call Cal Olson at 827-7405.

WEEKEND RECREATION PLAY IN ORANGE - The Orange Chess Club has informal open play every Saturday and Sunday 11 a.m. to 4 p.m. - Also Tuesday 7-11 p.m. Hart Park ClubHouse, 701 S. Glassell in Orange.

ORANGE TOURNAMENT CHESS ASSOCIATES meets Tuesdays 7-11 p.m. at Trinity Episcopal Church, 2400 N. Canal (one block west of Orange Mall). For information call Gene Olson at 637-3742.

SAN CLEMENTE CHESS CLUB meets on Mondays 7-11 p.m. at San Clemente Community Center (Teen Center entrance on Cabrillo). For information, call Ed Tierney at 492-0822.

NEW - Chess Collection Chess Club - membership includes access to chess studio, postal chess library, and discounts. \$10 per year. Call 997-9140.

There lies within us all a pawn to be promoted.



