

# CHESS

BY ISAAC KASHDAN  
INTERNATIONAL GRANDMASTER  
Address letters to Chess Editor, L.A. Times  
Los Angeles 53, Calif.

## FULL PROGRAM FOR MORPHY DAY CHESS

The Morphy Day celebration to be staged Saturday under the auspices of the Southern California Chess League and the San Gabriel Chess Club promises to be one of the outstanding events of local chess history.

The site for the celebration will be the Garvey Memorial Park in South San Gabriel. Arrangements have been made for the reception and entertainment of hundreds of chess players and their families. The program will last from noon to midnight.

The park can be reached by taking the San Bernardino Freeway and turning south at the Del Mar Ave. turnoff. Continue south on Del Mar for two blocks to Emerson, then turn left for the park.

The program for the afternoon includes an open rapid transit tournament with Swiss system pairings and the presentation of prizes to winners of the SCCL team tournament. Individual games and matches will go on all day.

In the evening Harry Borchow and Irving Rivise will take on all comers in simultaneous play. Other masters may also be available for challenge.

The park is nine and one-half acres, including a large swimming pool, children's playground, lunch stand, baseball diamond and a gymnasium large enough for hundreds of chess games.

Players are expected from all parts of Southern California. Morphy Day is a real opportunity to meet most of the prominent chess masters of the area. For further information write to Fred Haeger, president of the San Gabriel Chess Club, 910 S Montecito Drive, San Gabriel, or call him at AT. 4-6098.

### U.S. OPEN AT ROCHESTER

The open championship of the United States Chess Federation will be held from Aug. 4 to 15 at the headquarters of the IBM Corp. at Rochester, Minn. The Minnesota Chess Association is cosponsoring the event.

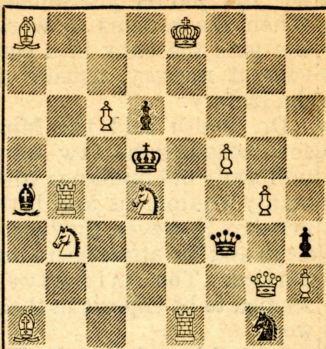
The Swiss system of pairings will be used, with play at the rate of one round a day. An oddity will be the use of an IBM electronic computer, which will figure the pairings, maintain the scores and perhaps determine new ratings for the competitors.

First prize in the championship tournament has been announced as \$750. Other leading prizes will be: second, \$500; third, \$350; fourth, \$250. At least 14 additional prizes, grading from \$150 to \$25, will be awarded.

A speed tournament is on the schedule for Aug. 16. A special week-end tournament for non-masters is planned for three days, Aug. 15 to 17. There will also be a separate women's

June 15, 1958  
TIMES PROBLEM 2971  
By O. Stocchi

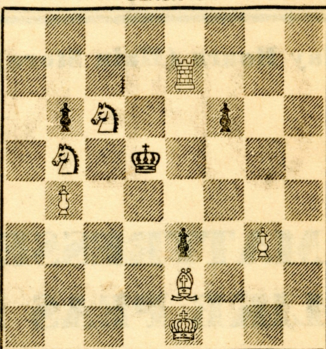
BLACK 6



WHITE 12

White mates in two.  
TIMES PROBLEM 2972  
By T. Balik

BLACK 4



WHITE 7

White mates in three.  
There are no duals in the well-constructed 2971, despite the number of threats after the key move. No particular strategy in 2972, but the key is good and the mates are neat.  
SOLUTION TO PROBLEM 2967: Q-QB2  
SOLUTION TO PROBLEM 2968: Q-N5  
Threat, 2 B-B6; if NxB, 2 Q-N8ch; if NxP, 2 Q-K5ch; if PxN, 2 Q-R5ch.

### SOLVERS' LIST

Five points—F. Aks, A. J. Baum, J. C. Beaver, G. G. Buchs, J. O. Bulpit, C. Cresswell, C. Dallas, W. H. Griffith, W. W. Irwin, J. Kaufman, G. W. Mishler, W. S. Moore, M. Morris, B. Oldham, E. E. Pen-ter, A. H. Schwinn, L. A. Victor, L. Zatyko. Two points—J. D. Frier-son, O. H. Ketchum, M. Rosen, J. P. Walsh. One point—B. Nobori, W. H. Volner.

ond place with 10½-7½. Van Nuys took third, with 1½-1½ in matches and 8-10 in game points. Inglewood tied with Van Nuys but lost two matches for a final score of 6-12.

Following are the details of the final rounds:

ROUND 1—Van Nuys, 3½; Santa Monica, 2½. Inglewood, 1½; Pasadena, 4½.

ROUND 2—Santa Monica, 3½; Pasadena, 2½. Van Nuys, 3; Inglewood, 3.

ROUND 3—Inglewood, 1½; Santa Monica, 4½. Pasadena, 4½; Van Nuys, 1½.

### MEETING IN FRESNO

At the business meeting of the California State Chess Federation, held at Fresno during the Memorial Day week end, five directors were elected to the board of the U.S. Chess Federation. They are Harry Borchow and Mrs. Lyn Henderson of Los Angeles, Henry Gross and Spencer Van Gelder of San Francisco and Philip D. Smith of Fresno.

The CSCF voted to require



event if 12 or more women wish to enter.

### JUNIOR CHAMPIONSHIP

An unusually well-rounded program has been prepared for the U.S. Junior Chess Championship, which will be contested at the National Guard Armory at Homestead, Fla., from July 8 to 12.

All Americans under 20 are eligible for the championship event. There is no entrance fee, the only other requirement being membership in the U.S. Chess Federation.

For those who do not feel up to the main tournament, there will be several new events: Junior Futurity, for those rated under 1800 points; Junior New Players, for those rated under 1600; Junior Beginners, for those rated or estimated below 1300.

Adults who bring juniors to the tournament or who contribute \$10 or more will be eligible for several varieties of individual and team play. A speed championship is also on the program.

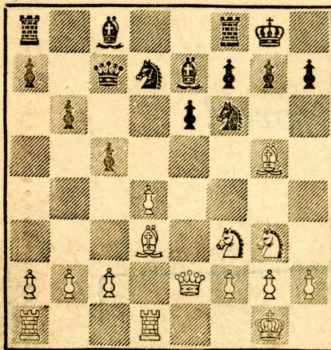
### CAPABLANCA COMBINES

Two weeks ago we published a beautiful combinative win scored in simultaneous play by Jose R. Capablanca, who held the world chess championship from 1921 to 1927.

Capablanca was not considered as a particularly brilliant player, his success being due mainly to remarkable accuracy and faultless technique in the end-game. But when opportunity beckoned, he rarely missed a sparkling finish.

Here is an example from an exhibition in Barcelona in 1935:

CAPABLANCA



RIBERA

- |          |     |           |         |
|----------|-----|-----------|---------|
| 1-P-Q5   | NxP | 7-QxPch   | K-R     |
| 2-BxB    | NxB | 8-P-KR4   | Q-K     |
| 3-BxPch! | KxB | 9-N-R5    | Q-B     |
| 4-N-N5ch | K-N | 10-N-B6!  | N-N     |
| 5-RxN!   | QxR | 11-Q-R5ch | N-R3    |
| 6-Q-R5   | R-Q | 12-Q-N6   | Resigns |

The idea of the bishop sacrifice is fairly evident from the diagrammed position, but the final maneuvering of the two knights is most artistic. The fine point of the combination is 10 N-B6! Ribera probably overlooked this possibility or he would have exchanged queens on the ninth move, with some drawing chances.

### PASADENA WINS CLASS II

By the margin of one game point the Pasadena Chess Club won the Class II team championship of the Southern California Chess League. They won two matches out of three in the final round robin, finishing with a point score of 11½-6½.

The Santa Monica Bay Chess Club defeated Pasadena in their individual match but lost in the first round to Van Nuys. Santa Monica finished in sec-

ond membership in the USCF as well as the local federation for entry into the California Open Championship, which will be held in Santa Barbara Aug. 30 to Sept. 1. Last year there were 109 participants in this event.

During the Fresno meeting Imre Konig played simultaneously against 15 opponents. He won 13, drew one and lost to Fred R. Hofeld of Los Angeles, who found a neat finish. The game follows:

### FOUR KNIGHTS DEFENSE

Hofeld White	Konig Black	Hofeld White	Konig Black
1-P-K4	P-K4	19-P-B4	QR-K
2-N-KB3	N-QB3	20-P-KB5	R-K4
3-N-B3	N-B3	21-BxN	PxB
4-B-N5	B-N5	22-Q-N4ch	K-R
5-P-Q3	P-Q3	23-R-K3	R-N
6-P-KR3	O-O	24-Q-B3	Q-K2
7-O-O	BxN	25-QR-K	Q-B
8-PxB	N-K2	26-Q-R5	R-N4
9-R-K	N-N3	27-Q-R4	Q-N2
10-P-Q4	P-B3	28-Q-B2	P-N3
11-B-Q3	R-K	29-B-K2	R-K
12-P-B4	PxP	30-P-KR4	R-N5
13-NxP	Q-B2	31-BxR	QxB
14-B-Q2	B-Q2	32-R-N3	Q-R4
15-N-B3	QR-Q	33-Q-B4	R-K4
16-B-N5	B-B	34-R-N4	BxP
17-N-R4	NxN	35-R-N3	P-Q4
18-BxN(4)	R-K3	36-R-N5!	Resigns

### TORRANCE OPEN TOURNEY

The Torrance Chess Club announces its first annual open tournament, to start Monday, June 30, in the recreation building in El Nido Park, 182nd St. and Kingsdale, Torrance. The club meets regularly at 7:30 on Monday evenings.

For information regarding entry fees, prizes, etc., write to John Thompson, club president, at 2509 Ridgeland Road, Torrance, or call him at DA. 6-6312.

### STEINER CLUB EVENTS

The Herman Steiner Chess Club, 108 N Formosa Ave., has started a ladder tournament for its members. On entering, players will be assigned a rating. They can then advance by challenging and defeating players ahead of them on the ladder.

Sam Geller will play simultaneously at the club Wednesday night. The openings will be either the French or Sicilian Defense. Geller will play the white pieces in half the games and black in the remainder.

### SANTA MONICA ELECTS

All the officers of the Santa Monica Bay Chess Club were re-elected unanimously at the annual meeting last Monday night. Herbert Abel is president, Robert Sale is vice-president and Otto Wentcher is secretary-treasurer.

### EASTERN STATES OPEN

#### SLAV DEFENSE

Crittenden	Marchand	Crittenden	Marchand
White	Black	White	Black
1-P-Q4	P-Q4	12-RxN	Q-R4
2-P-QB4	P-QB3	13-P-K4	BxN
3-N-KB3	N-B3	14-NPxB	BxP!
4-N-B3	PxP	15-QxB	QxBP
5-P-QR4	B-B4	16-R-N	QxB
6-P-K3	P-K3	17-RxP	N-B4
7-BxP	B-QN5	18-R-B2	NxQ
8-O-O	QN-Q2	19-RxQ	N-Q3
9-Q-K2	O-O	20-R(4)-N4	NxR
10-R-Q	N-K5	21-RxN	QR-N
11-B-Q2	NxB	Resigns	

### CHAMPIONSHIP OF PARIS

#### QUEEN'S INDIAN DEFENSE

Ratner	Berlacki	Ratner	Berlacki
White	Black	White	Black
1-N-KB3	N-KB3	22-R-N2	N-Q2
2-P-KN3	P-QN3	23-Q-B3	N-N
3-B-N2	B-N2	24-R-N3	N-B3
4-O-O	P-K3	25-R-R3	N-Q5
5-P-N3	B-K2	26-RxQ	NxPch
6-B-N2	O-O	27-K-N2	NxQ
7-P-Q3	P-Q	28-RxP	RxP
8-P-B4	QN-Q2	29-N-B3	P-B3
9-N-K5	P-B4	30-P-QR4	KR-Q
10-N-Q2	NxN	31-KR-K	R(1)-Q3
11-BxN	N-Q2	32-P-R5	P-QN4
12-B-N2	B-KB3	33-PxP	NxP
13-Q-B2	BxB	34-R-K7	P-K4
14-QxB	N-B3	35-R-QN	N-Q5
15-Q-K5	Q-Q2	36-R(1)-N7	N-K3
16-QR-Q	QR-Q	37-N-R4	P-B5
17-Q-N5	PxP	38-N-B5	K-B
18-BxB	QxB	39-R-B7ch	K-K
19-NPxP	P-KR3	40-NxPch	NxN
20-Q-K5	Q-B3	41-RxN	R-Q2
21-R-N	Q-R5	42-P-R6	Resigns