

CHESS

BY ISAAC KASHDAN

INTERNATIONAL GRANDMASTER

Address letters to Chess Editor, L.A. Times
Los Angeles 53, Calif.

CHESS GROUPS DRIVE FOR U.S. TEAM FUNDS

The American Chess Foundation and the United States Chess Federation have combined forces in the drive for funds required to send an American team to the International Team Tournament at Munich, Germany, Sept. 29 to Oct. 3.

A minimum of \$5000 is needed for expenses for the six players making up the team. With top sponsorship and an intensive campaign in all parts of the country, the goal should be reached and if possible exceeded.

Jerry Spann, president of the USCF, is one of the prime movers of the drive and most active individual in the organizational work. He is visiting various cities to make personal appeals for the team fund.

Spann will be in Los Angeles Thursday, July 24, to preside at an unusually interesting event being staged at Romanoff's restaurant, 140 S Rodeo Drive, Beverly Hills.

Larry Evans, who is likely to be one of the American team, will play simultaneous chess against a large group. Also on the program will be the first showing of a special UPA cartoon devoted to chess, written and scored by Charles Henderson.

Admission to this event will be \$2 for those who wish to play and \$1 for spectators. The entire receipts will go to the team fund. As the number of players may be limited, anyone wishing to take a board should register in advance by calling Mrs. Lyn Henderson at CR. 6-3029.

STEVEN MEMORIAL

The George Steven Memorial Tournament, sponsored by the Santa Monica Bay Chess Club, attracted 16 of the leading masters and experts of the Los Angeles area.

Eight rounds will be played on Wednesday evenings, using Swiss system pairings. Walter Abel is the tournament director.

Following are the first-round results and two of the games:

I. Rivise 1, J. Klinger 0; G. Soules 0, R. Cross 1; L. Simon 1, E. Book 0; S. Almgren 1, R. Harshbarger 0; J. Jaffray 0, R. Hamman 1; G. Van Deene 0, G. Palmer 1; A. Kempner 0, R. Seltzer 1.

ENGLISH OPENING

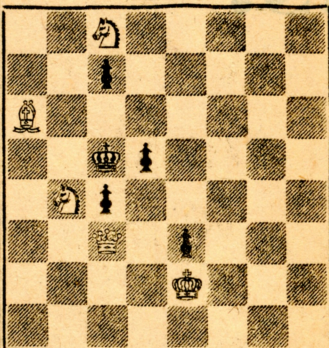
Soules White	Cross Black	Soules White	Cross Black
1-P-QB4	N-KB3	14-P-KR4	K-N2
2-N-QB3	P-Q3	15-P-R5	R-R
3-P-Q4	P-K4	16-PxP	RxR
4-P-Q5	P-KN3	17-BxR	PxP
5-P-K4	B-N2	18-N-B3	Q-R6
6-B-K2	O-O	19-K-Q2	B-N5
7-B-N5	P-KR3	20-K-B2	R-R
8-B-K3	QN-Q2	21-Q-K2	QxB!
9-P-KN4	N-B4	22-RxQ	RxR
10-B-B3	P-QR4	23-N-QN	NxP!
11-P-N5	PxP	24-QN-Q2	N-B4
12-BxP	Q-Q2	Resigns	
13-BxN	BxB		

July 6, 1958

TIMES PROBLEM 2977

By N. Mansurov

BLACK 5



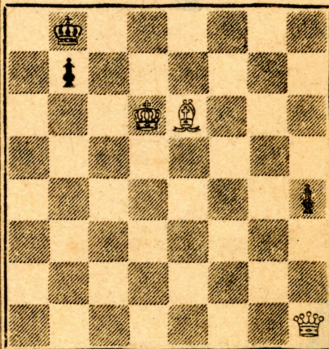
WHITE 5

White mates in two.

TIMES PROBLEM 2978

By F. Bethge

BLACK 3



WHITE 3

White mates in three.

Our problems today are light-weights and not too difficult. Good key and accurate play in 2977. The threat must be seen in 2978.

SOLUTION TO PROBLEM 2973: P-B4
SOLUTION TO PROBLEM 2974: Q-B6
Threat, 2 Q-B3ch; if P-K5, 2 Q-K5ch;
if R-Q6, 2 QxQPch; if R-Q5, 2 RxPch.

SOLVERS' LIST

Five points—F. Aks, J. C. Beaver, C. Cresswell, D. L. Gibson, W. H. Griffith, W. W. Irwin, J. Kaufman, W. S. Moore, M. Morris, E. E. Penter, J. E. Seright, L. Zatyko. Three points—M. Rosen. Two points—R. Lowe, N. Lesser, G. G. Tejoo, G. R. Turgeon, L. A. Victor, J. P. Walsh. One point—O. R. Bond, B. Gish, R. C. Nickles.

NYU; Arthur Feuerstein, CCNY; Anthony F. Saily, Fordham, and Robert Sobel of the University of Pennsylvania.

FISCHER IN MOSCOW

Bobby Fischer, 15-year-old American chess champion, is in Moscow but not exactly on schedule. In fact, he was not due to arrive until July 20, when he was invited for a two-week round of exhibition matches.

This does not bother Bobby at all, although his hosts are having difficulty in extending his visa, according to a report from the New York Times. Bobby shows up daily at the Central Chess Club in Moscow and knocks off 30 games or more in three or four hours every morning.

BLACKMAR GAMBIT

Van Deene White	Palmer Black	Van Deene White	Palmer Black
1-P-Q4	P-Q4	15-B-B2	Q-R7
2-P-K4	PxP	16-N-K3	O-O
3-N-QB3	N-KB3	17-Q-Q2	Q-B5
4-P-B3	PxP	18-B-N	Q-N6ch
5-NxP	B-B4	19-K-K2	N-Q2
6-B-KN5	P-K3	20-R-KB	RxR
7-N-K5	B-K2	21-KxR	R-Bch
8-P-KN4	B-N3	22-B-B2	Q-B5
9-B-N2	P-B3	23-P-B3	N-B3
10-P-KR4	P-KR3	24-Q-K2	N-K5
11-NxB	PxN	25-BxN	QxB
12-B-K3	N-Q4	26-K-N	Rx6
13-NxN	BxPch	27-Q-B2?	RxN
14-RxB	QxRch	Resigns	

BOROCHOW, SOULES DRAW, STILL TIED IN TOURNEY

Harry Borochow and George Soules, the two leaders in the special 40-40 tournament of the Herman Steiner Chess Club, were paired together in the fifth round. A draw left them still tied at 4½-½, with the final round to be completed.

In a triple tie for third at 4-1 are J. Barry, R. Hamman and A. Milcas. L. Frankenstein and S. Sholomson, with 3½-1½, are also in the running for the prizes.

Following are the fifth-round details:

G. Rubin 1, T. Loera 0; H. Loera ½, D. Ware ½; A. Milcas 1, H. Rogosin 0; R. Kogan 0, R. Hamman 1; J. Barry 1, M. Kahl 0; H. Borochow ½, G. Soules ½; M. Kerllenevich 0, L. Frankenstein 1; J. Hunt ½, G. Gorten ½; R. Gish 1, R. Halpern 0; P. Klaus 0, R. Seiden 1; A. Gates 0, J. Jaffray 1; S. Sholomson 1, M. Gordon 0; D. Lull ½, W. Wheeler ½.

James Barry will lecture on Chess Dynamics at the Steiner Club, 108 N Formosa Ave., at 8 p.m. Wednesday.

EXPERT CANDIDATES

A. Carpenter is in sole possession of the lead with a 3-0 score in the east section of the Expert Candidates Tournament. This section is scheduled Wednesday evenings at the City Terrace Chess Club, 3875 City Terrace Drive.

Tied for second with 2½-1½ are E. Amdon and N. Hultgren. The next position, with 2-1, is shared by six players, G. Barrett, R. Hagedorn, H. Rader, W. Smith, L. G. Thompson and D. Young.

In the west section, which is played Monday evenings at the Santa Monica Bay Chess Club, Lincoln Park, Santa Monica, first place is shared by L. Harris and P. Wrangell with 3-0 scores.

R. Harshbarger is second with 2½-½, followed by a group with 2-1: J. Jaffray, A. Kempner, A. Michaelson and G. Palmer.

Following are the details of last week's play:

EAST SECTION—A. Carpenter 1, W. Smith 0; N. Hultgren 1, H. Rader 0; L. Schiff 0, E. Amdon 1; G. Barrett 1, J. Apple 0; J. Zizda 1, H. Mann 0; S. Mann 0, R. Hagedorn 1; J. Porth 1, G. Erus 0; H. Arbitter 0, J. Hamilton 1; B. Ponce 0, D. Young 1; L. G. Thompson 1, F. Haeger 0; P. Klaus, bye.

WEST SECTION—S. Silven 0, G. Palmer 1; P. Wrangell 1, A. Michaelson 0; L. Harris 1, J. Jaffray 0; R. Harshbarger 1, Dr. Collins 0; R. Mize 1, S. Lewis 0; B. Mintz 0, A. Kempner 1; Dr. Bullock 1, G. Sturges 0; E. Banhagel 1, S. Sturges 0; A. Cherestes 1, G. Olson 0; S. Dreyfus vs. V. D. Plas, adjourned.

U.S. SENDS STUDENT TEAM

For once the United States will be represented in international chess tournaments this summer. A team of our leading collegians are in Varna, Bulgaria, to compete in the world students' chess championship.

The team is headed by William Lombardy of CCNY, world junior champion. The other members are Edmar Mednis,

One Russian official stated, "We have to throw him out every afternoon so he can get some sunshine. We don't know what to do with him, but he's a wonderful boy."

Bobby explained, "I like to play. I want to play against the best they have. Their style gets me. That's why I came here." Latest reports are that Bobby has been winning about 60% of his games.

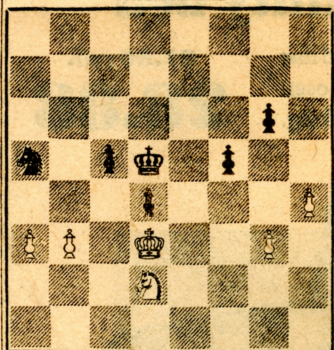
REPRINTS BY REINFELD

Dover Publications are issuing a series of low-cost reprints of chess books. They are paper covered but well printed on good stock. Two books authored by Fred Reinfeld are available at \$1.25 each.

THE END-GAME IN CHESS has quite a number of interesting and instructive positions, all carefully analyzed in Reinfeld's best style. The arrangement is not by type of ending (in fact, many of the positions could better be described as middle games) but in accordance with principles involved.

The following position is taken from the book, with Reinfeld's preliminary comment:

MARSHALL



MAROCZY

Can Black possibly win? It does not seem so, for while he has a protected passed QP, White's QRP seems even more formidable — for it is an outside passed pawn and will therefore have to be watched carefully.

There is only one way in which Black can hope to accomplish something: namely, by simplifying into a king and pawn ending with ... NxP. But this course seems very risky in view of the dangerous character of White's QRP.

Yet the win is there, due to a circumstance which might easily pass unnoticed: the unprotected state of White's KNP. This turns a probable draw into a win for Black—but bear in mind that the ending must be calculated to a hair!

41-...	NxP!	49-P-R6	P-B6
42-NxN	P-B5ch	50-P-R7	P-B7
43-K-B2	PxNch	51-K-K2	P-Q6ch!
44-KxP	K-K5!	52-K-Q2	P-B8(Q)
45-K-B2	K-K6	53-P-R8(Q)	Q-N7ch
46-K-Q	K-B7!	54-QxQch	KxQ
47-P-R4	KxP	Resigns	
48-P-QR5	P-B5		

The second book is **HOW TO FORCE CHECKMATE**. There are 300 diagrams from actual games in which checkmate can be administered in one, two or three moves.

When the reader gets through, he will have seen practically every conceivable form of mating position. Whether this will help him to achieve such positions in his own play is another matter.

JUNIOR WORLD CHAMPIONSHIP NIMZO-INDIAN DEFENSE

Lombardy U.S.A.	Hallerod Sweden	Lombardy U.S.A.	Hallerod Sweden
White	Black	White	Black
1-P-Q4	N-KB3	13-B-Q2	N-Q2
2-P-QB4	P-K3	14-P-QN4	N-K2
3-N-QB3	B-N5	15-Q-R5	P-N3
4-P-K3	N-B3	16-Q-R6	P-KB4
5-N-K2	P-K4	17-QR-K	PxP
6-PxP	NxP	18-NxP	N-KB4
7-P-QR3	BxNch	19-Q-R3	Q-R5
8-NxB	P-QN3	20-Q-B3	N-Q5
9-P-B4	N-N3	21-Q-Q	N-KB3
10-B-Q3	O-O	22-B-B3	NxN
11-P-K4	P-Q3	23-BxKN	BxB
12-O-O	B-N2	24-QxN	Resigns