

# Chess

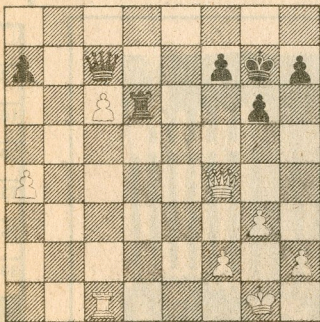
By George Koltanowski

## IMPROVE YOUR CHESS

The next 11 positions are presented as a test to evaluate your ability in imagination, reasoning, knowledge and technique. Stick to the conditions set forth under each position, keep score of your time used to write down each answer. When the solution is published, you will also find the number of points you earned for each answer. (Who knows, you might be of master strength and don't know it!)

TEST 1, 2, 3, 4: These are given to test your ability to see the coordination of your pieces, the weakness in your opponent's or your position, and the quickest way of benefitting from the situation. In each it will be White to move, and you **MAKE JUST ONE MOVE** that will decide the issue. You **MUST** write down the answer, and add on the time used to find the answer. (Say 10 seconds, etc.)

### TEST 1



29

### ONE MOVE FOR WHITE

Time in seconds.

(To our students: Please no correspondence on these tests. Even if you do not agree with the explanation given, there is no doubt in my mind that you will learn more about the game if you study this series. Answers tomorrow.)

**THE MONTEREY COAST OPEN** attracted 80 players. Peter Cleghorn, Roy Ervin and Robert Hammie, all from Berkeley, tied for first place with 4 points each. Alex Suhobeck, Monterey, and Roger Gabrielson, Berkeley, tied for 4-5th place with 3½ each. . . . The Monterey Chess Center will have its eight Annual Cherry Tournament on Saturday and Sunday, Feb. 21 and 22 at 430 Alvarado street, Monterey, 93940. Write for full details. . . . Houston, Tex., was picked by the chairman of the Merit Award Committee, Carl Barton, San Francisco, as the Chess City of the year (1975). Burlington, Vt., as the Chess City (with a lower than 100,000 population).