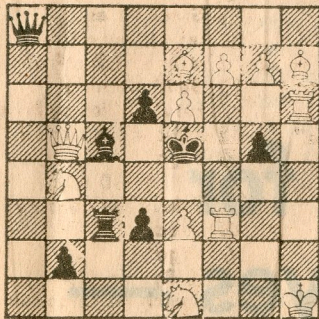


CHESS / BY GEORGE KOLTANOWSKI**PROBLEM**

By O. Wielgos, Germany



White to play and mate in two moves.

THE KASPAROV QUESTION

There's great furor in chess circles all over the world! Will Gary Kasparov wear the crown of Champion of the World in 1984 or will it take longer for this 20-year-old youngster from Baku, the capital of Azerbaidjan Soviet Republic, to attain this goal? The Soviet chess hierarchy expects him to win against Viktor Korchnoi and with such pressures on his shoulders Gary may not be as calm and thus will not play his best.

His style of play is very demanding and his nerves must be of steel in order for him to prevail against Korchnoi in this semi-final Candidates' match. It is doubtful that he would

have much trouble beating the other semi-finalist (Vassily Smyslov or Zoltan Ribli) — if he beats out Korchnoi, a serious and experienced battler. Pasadena, where the match is being played, may easily be the Waterloo of

What distinguishes Gary Kasparov from other chess talent in the Soviet Union? It lies in his excellent memory, working capacity, his intuition to judge complicated positions correctly and, above all, his ability to create complications, to see what other chess players fail to see. To illustrate this, look at the games he played by the time he was only 10 years old.

Continued tomorrow.

SOLUTION to Problem: 1.QxP.