

CHESS

By CLIF SHERWOOD

Club notes, games, problems, etc., solicited. Address all communications to The Chess Editor, Evening Express, Los Angeles

September 30, 1921

The Los Angeles Chess and Checker Club is located at 829 Union League building, Second and Hill streets. Telephone 11539. Visitors always welcome.

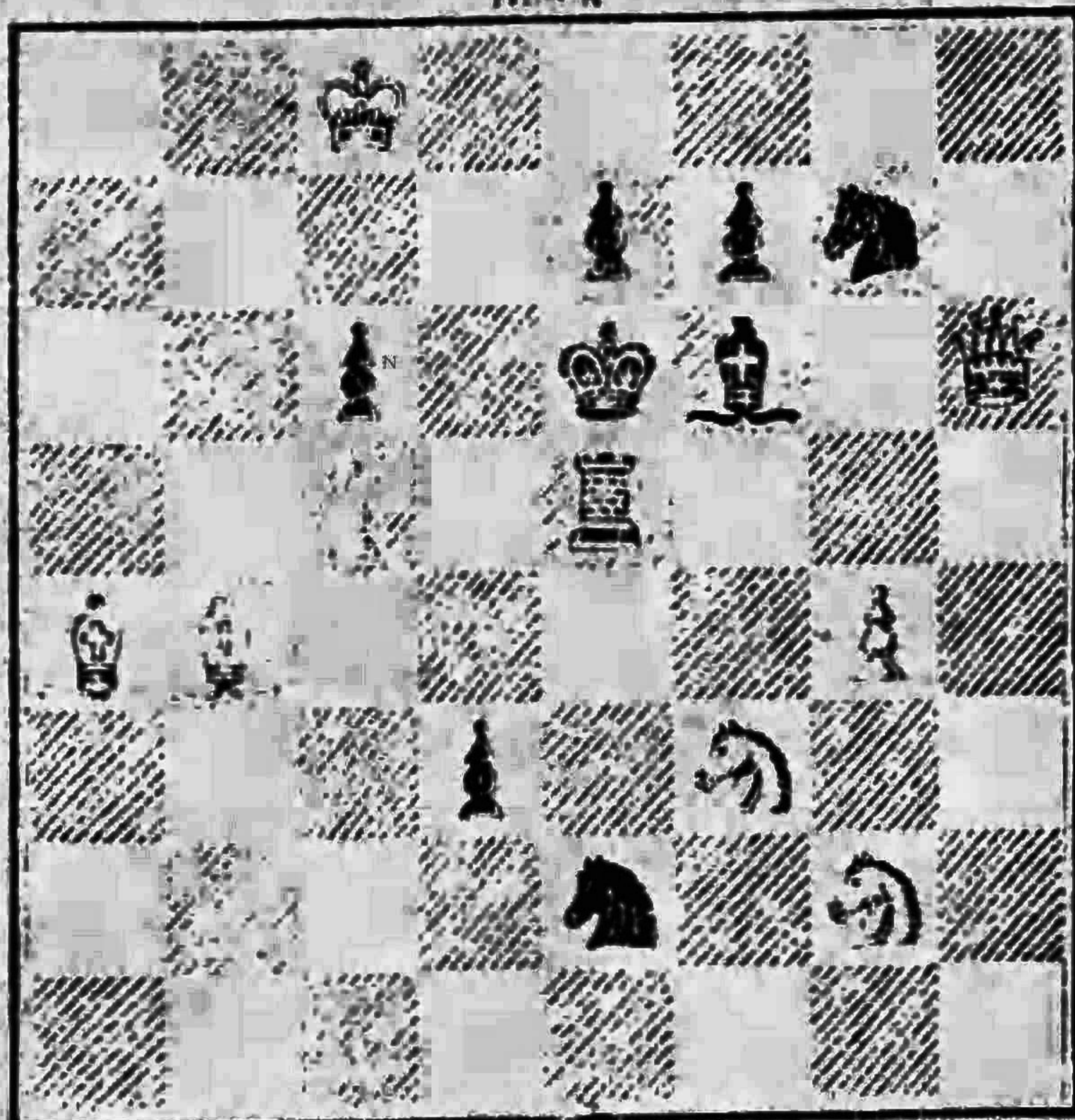
EXPRESS PROBLEM NO. 1

By Charles E. Richardson,
Los Angeles

(First publication)

This is the latest example of an old-time local composer's pet theme.

Black



White

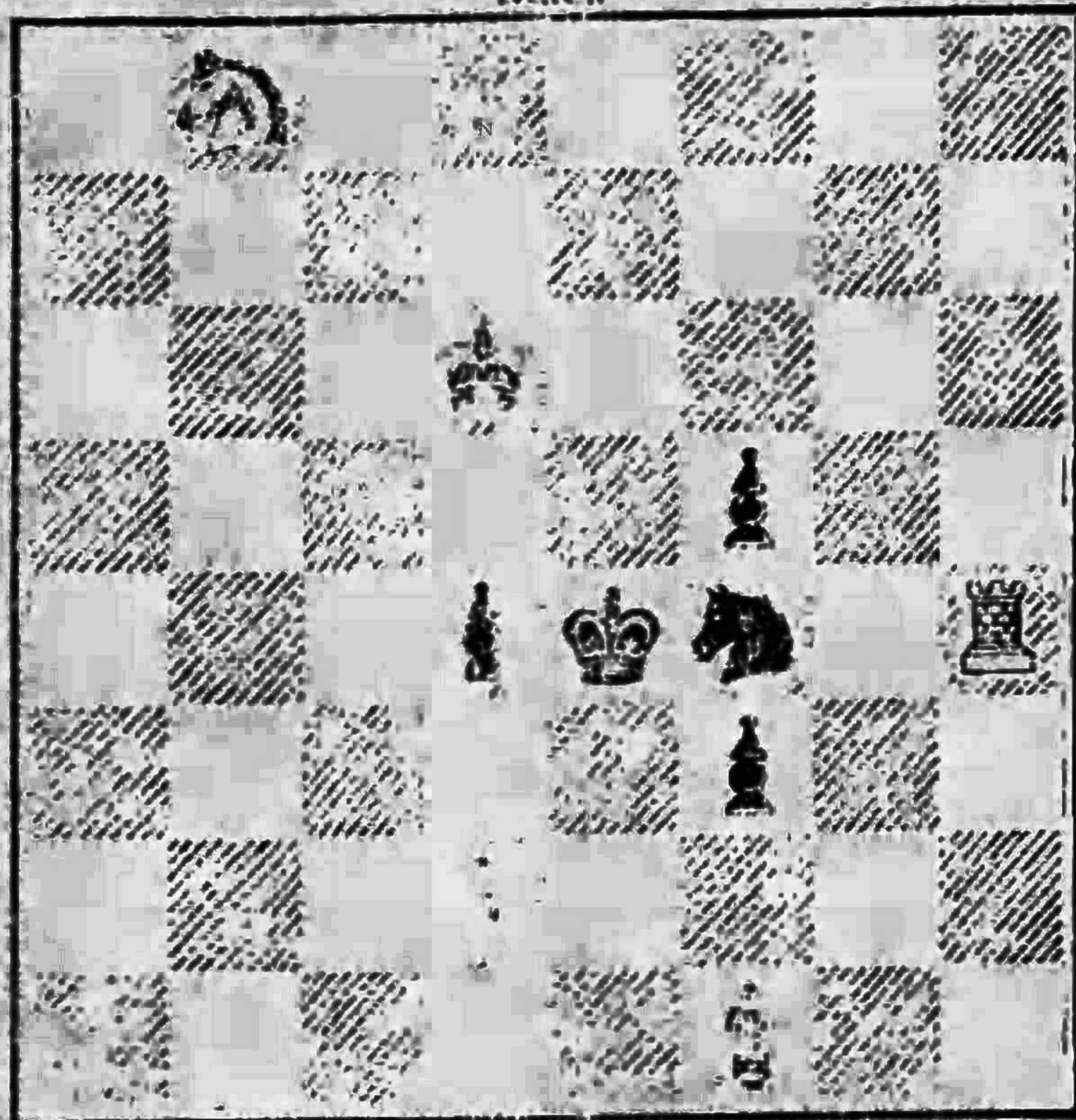
White mates in two moves.

EXPRESS PROBLEM NO. 2

By Cliff Sherwood, Los Angeles

This three-mover, by a new local composer, was first published last May in a local paper and a month later in the Oregonian; only since then a slight transposition has been made to obviate a dual which a Portland solver discovered.

Black



White

White mates in three moves.

A perpetual handicap tournament, at the Los Angeles Chess Club will be started October 1 to help along a fund to bring the 1922 state championship tourney to Los Angeles. The losers will pay five cents a game, a small percentage of the proceeds to be used for monthly prizes and the balance for the fund. An annual California state chess championship tourney is now an established certainty, the 1921 convention

to be held at the Mechanics Institute, San Francisco, in November or December. Practically all chess centers in the state are subscribing to the tournament fund, the Mechanics Institute topping the list with \$250. S. Mlotkowski with \$5 and E. R. Perry with a \$10 donation, head the list here. Every chess enthusiast desirous of seeing the 1922 convention held in Los Angeles should donate to this year's fund. Mail your contribution to the editor or hand same to Carl Bergman at the local club.

The following is one of a series of offhand games played during Whitaker's recent visit in Los Angeles. You'll enjoy the pretty ending.

EXPRESS GAME NO. 5

EVANS GAMBIT

Mlotkowski, white; Whitaker, black.

White.	Black.	White.	Black.
1 P-K4	P-K4	11 KtxP	R-K1
2 Kt-KB	Kt-QB3	12 B-Q3(a)	Q-R4
3 B-B4	B-B4	13 Q-R4	P-QB3
4 P-QKt4	BxP	14 Q-Kt4	R-Kt5
5 P-B3	B-R4	15 Q-R3	KtxKt
6 P-Q4	PxP	16 QxR(b)	KtxKt ch
7 Castles	PxP	17 PxKt	R-Kt5 ch(c)
8 Q-Kt3	Q-R3	18 PxR	QxKtP ch
9 P-K5	Q-Kt3	19 K-R	Q-B6 ch
10 KtxP	P-QKt4	20 K-Kt	B-Kt2

Resigns.

NOTES BY LOSER

- (a) Q-K3 is best and gives White a good game.
- (b) Losing quickly, but if KtxKt, BxKt, QxR, BxR, QxRP. Black replies Kt-K2 and comes out a piece ahead.
- (c) Winning brilliantly. White has no defense for if K-R, Black replied B-KR5.

If you enjoy spectacular endings, don't fail to run over the following game, which was played during the same offhand series mentioned above.

EXPRESS GAME NO. 6

FRENCH DEFENSE

Mlotkowski, white; Whitaker, black.

White.	Black.	White.	Black.
1 P-K4	P-K3	14 B-B4	Kt-Kt3
2 P-Q4	P-Q1	15 B-KKt3	Q-Rch
3 P-K5	P-QB4	16 Kt-Q2	QxRP
4 P-QB3	Kt-QB3	17 B-R6	R-QKt
5 Kt-Kt3	Q-Kt3	18 Kt-Kt3	Q-Q4(c)
6 B-Q5	B-Q2	19 Castles	QKt4P
7 P-Q	BxP	20 Q-R-qid	B-Kt4(e)
8 Q-K2(a)	R-B1	21 Q-R5	Q-B3
9 Q-Kt2	P-Q5(b)	22 BxKt	BxR
10 K-B4	Q-B2	23 BxB	BxKt(f)
11 P-Q	P-QKt4	24 PxR	Q-B4
12 PxR	PxKt	25 B-B6!	Resigns
13 BxP	BKt-K2		

NOTES BY WINNER

- (a) Castles is usual. White wishes to give up castling altogether should Black castle on King's side, and after proper preparations proceed with an attack by the King's side Pawn.
- (b) Black afterward condemned this move, attributing to it the loss of the game.
- (c) Or Q-Kt5ch, when White replies K-B and holds the Pawn.
- (d) BxR-Q would have obviated some of the complications which follow.
- (e) Extremely ingenious, but the position is against Black.
- (f) A desperate effort to regain the piece, when only loses more speedily than would, say, Castles.

The following corrections apply on games previously published: Express game No. 1—Note (b) Black's thirty-first move should be R-K3. Express game No. 4—Note (b) should read "not 7... P-QB4; on account of Kt-Kt5."

The latest news regarding the proposed match between Whitaker and the present United States Champion Marshall is the receipt of a letter from Whitaker in which he states that Marshall has agreed to the match and is only waiting for a formal challenge.

Correspondence players take notice. S. A. G. Swenson, 314 West Seventieth street, New York City, writes that he would like to play some correspondence games with a strong Los Angeles player, with or without "stake."

T U