

OPEN FILE

\$1.50
per issue

200 AVRAM AVENUE ■ ROHNERT PARK, CALIFORNIA 94928

OPEN FILE VOLUME III NUMBER 2 WINTER 1987

Koltanowski Museum

Gift to Rohnert Park

by Keith Halonen

George Koltanowski, Dean of American Chess, past president of Santa Rosa Chess Club, cofounder of the Federation Internationale des Echecs (World Chess Federation), former president of U.S. Chess Federation, nationally syndicated chess columnist, internationally renowned author, World Blindfold Chess Champion, international arbiter, and the most energetic promoter of chess in the world, is giving his memorabilia to Rohnert Park Chess Club under the auspice of the City of Rohnert Park.

DEDICATION CEREMONIES

The room, in an early stage of redecoration, was dedicated during Koltanowski's appearance on Saturday, October 17, at Rohnert Park's Autumn Open. Grand Opening ceremonies are to be sometime during mid-1988. It is the very first genuine *per se* attraction which exactly fits the city council's goal to make Rohnert Park the "destination city" in the Northbay Area. Jud Snyder pointed this out in his Clarion editorial September 2.

A VALUABLE PRESENT

This extraordinary gift is of particular interest to RECA, as George Koltanowski is also founder of the Youth Chess programs. Some 25 years ago, this writer learned the moves in his Milwaukee, Wisconsin high school chess club, thanks to Kolty, who lived there a year and left his mark.

It is an even greater honor to the Redwood Empire in general, and to the City of Rohnert Park in particular, when you consider that there is now the recently inaugurated U.S. Chess Hall of Fame and Museum at U.S. Chess



George Koltanowski will autograph your copies of any of his books. "In the Dark" \$9.95 + .60 sales tax + \$1.00 P&H (total \$11.55). "TV Chess," "Colle System," and "America Salutes Comins Mansfield" (Introduction and problems by GK) are each \$5.50 + .33 sales tax + .50 postage & handling. Place your order now. Order directly from

George Koltanowski
1200 Gough St. Apt. D-3
San Francisco, CA 94109

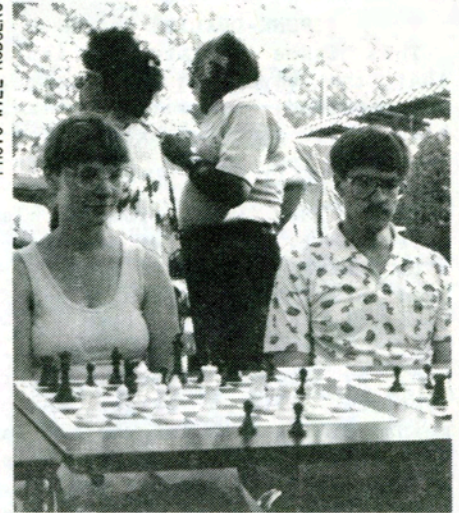
Federation headquarters in New Windsor, New York.

James Pekkain, Director of the Rohnert Park Rec Department, expressed considerable surprise at the generous offer from Master Koltanowski. He brought the matter before the City Council, who then entertained the appeal of

CONTINUED ON PAGE 3

Rohnert Park FOUNDERS DAY SIMUL!

PHOTO WILL RODGERS



An unidentified woman plays the Sicilian Defense, while M. FONTANA, at the next board, plays the Chatard-Alekhine Attack

RP FOUNDERS DAY

Saturday, September 19, served up an afternoon of music, food, art, and... chess! The Redwood Empire Chess Association set up ten boards in Alicia Park Gazebo at 2:00 pm. USCF-rated experts Peter Manetti and Donald Steers then proceeded to take on all comers. Peter Manetti played 12 games in solid, positional style between 2:30 and 4:30, when Don Steers took over to smash out 32 consecutive wins by 6:30, bringing the day's score to 44-zip.

Local kids turned up a-plenty, and even the U.S. Navy furnished a few Sea Cadets from the Training Station at Two Rock. Skill reared its menacing head in the form of the couple pictured here deep in thought mid-game. The unidentified woman pictured here played the Sicilian Defense, and Mr. M. Fontana, next board, played into the Alekhine-Chatard Attack (see GAME ANALYSIS in the ANNOTATIONS section).

Sorry, folks. Next time we'll give you some local C-players and even up the odds a bit. If it makes you feel any better, these guys do the same thing to most of us chess club members every chance we give them.

Peter Manetti is a member of Occidental Chess Club and Don Steers presides over the Santa Rosa Chess Club. Both are members of the Rohnert Park Chess Club, and both serve as RECA Directors. Find PLACES TO PLAY in the CHESS TIVITIES section for more info on local chess clubs. Look to the CLUBSCENE column for coverage of club activities.

EDITORIAL COMMENT

PUNK-DUALITY

This issue is late. But isn't that the way with underfunded, understaffed, overworked, blah, blah. Pick your own excuse. Fortunately, no timely advertisements, except our own, were submitted. They were promoted via direct-mail. By way of compensation readers will find more current news in addition to dated reportage, a tighter design package, clearer diagrams, graphics. And, by popular request, larger typeface. 17.6 % larger, which means 85% as much information in the same space. This issue sets a standard for future quality. Next issue may be smaller, the price of timely delivery, but it will be a pacesetter. And the issue after next should combine the best of both.

RECA

The Redwood Empire Chess Association is going through changes even as it approaches formality. Walt Randle has submitted his resignation from the chairmanship and presidency due to the unfortunate automobile accident he endured recently. Walter is spending considerable time these days buckling up his suspension bench and traction equipment. I think he will be around in that brightest of all times, The Future, and that RECA has not seen the last of Walt.

Will Rodgers is also withdrawing from the board of directors and his position as Director of Education. Will devotes an enormous amount of time to teaching chess and assisting with the new Kolty Room in the Burton Avenue Rec Center in Rohnert Park. RECA may be seeing him again, too.

This stuff shakes people up. I can tell you now that it's not so serious as when the Beatles broke up, but it's bigger than a breadbox. Walt and Will are both very energetic and their active input will be missed. The board will soon receive notice of a meeting to be held for the purpose of proposing replacements for their vacant offices.

Would-be chess organizers, pay heed! The most reliable factor in all the universe is change. It's an error to presume things will be in a static state inter-



ROHNERT PARK CHESS CLUB MEMBERS Don Steers (left) and Keith Halonen play as fellow chess player Paul Emerlck looks on. Al Einstein waits patiently tableside for risers, never taking lightly the effects of time on the matter of energy over the 64 squares.

minably. Prepare mentally by accepting its certainty and change loses its sting and reveals itself as another facet of growth. Create your constitution or by-laws to allow for change, and you will suffer less.

This is an approach I apply to coping with problems. Not having some such attitude leads only to despair. And that we shan't do. The answer to burnout: vacation. In the cases of our departing directors, each has assured me of his continuing support in whatever measure he can manage. We are all overextended. But I hope life is a Lewis Carroll game of madhouse, providing fresh pieces for those critical squares!

MANAGEMENT STYLES

I wince every time I see a management diagram. You know which one I mean, the one with the big box on top (President), with the thin lines fanning downward to smaller boxes (Vice Presidents), which lead further down to even smaller boxes (Supervisors or the like), all bearing down like the Great Pyramid on a bunch of dummies (Slaves) at the bottom who do all the work.

Office arrangements in major corporations precisely reflect this graphic flowchart of sycophancy. Indeed, some such order is often imperative when major undertakings are at hand. But often small companies try too hard to emulate Bigger Brothers, not realizing a different approach


may be more appropo for them.

My own management diagram is a cluster of circles each representing a person or department. The circles are various sizes depending upon the importance of each circle's function to the operation as a whole, regardless of whose idea it was or who finances it. The cluster is roughly arranged in a circle itself, with lines connecting interrelated functions or departments or people. The lines are thicker or thinner or different colors to symbolize the amount or importance of the communication between the various departments.

The information exchange and integral departmental function are emphasized in my diagram, not the boss' status. Lines go everywhere they're needed. No one is aloof or inaccessible, and no one is a bottleneck to communication where it's really needed. I answer my own phone.

WHINING AND BEGGING

If only we had...(snivel snivel), but its true. Without going into gruesome detail, I'll just point out that our needs are:

- 1) Funds - see coupon in back.
- 2) Chess Activists - you may have a talent or service which could contribute to our purpose. RECA needs an accountant, printer, typesetter, and OPEN FILE journalists and contributors. 

Keith Halonen Editor

Rohnert Park Chess Club President Walter Randle for space at the site of Rohnert Park's four annual open chess tournaments, Burton Avenue Rec Center.

BEHIND THE SCENES

Kolty expressed a specific interest in my judgement (!?) regarding the selection of particular articles to be on display in the Koltanowski Room. And so I accompanied Walter Randle to San Francisco to begin the selection and get firsthand impressions of George's vision. George and his wife Leah met us at the door of their Cathedral Hill apartment. We ate chess cake (no kidding) and drank coffee as we perused the 1st installment of Kolty's memorabilia, nine scrap books! With dozens more in the cellar!

After completing our business, Walt and Kolty got down to their own business on the chess board, where George demonstrated that he had no trouble playing chess with his eyes open, either. In fact, he demonstrated it four times, possibly in reaction to Walt's unrelenting skepticism. George lauded praises on Walt's playing skills, but cautioned him against giving up all his worldly possessions in the hope of achieving the rank of Master within one year.

Will Rodgers began fashioning the three-inch Redwood Framing for the panels which provide the main field against which the two-dimensional exhibits mount. I developed a scale display and exhibit symbols, and in latenight deliberations, Walt and Will and I worried Kolty's scrap books like dogs on bones. Picked 'em clean. We performed esthetic triage and gave preference to items which focused on George in the context of his pursuits.

Checkles



I KNEW IT WAS BOUND TO AFFECT HIM SOONER OR LATER... BUT I HAD NO IDEA!!

MASSON PANEL

The first panel features the Paul Masson tournaments and the annual problem-solving competition. Kolty officiated at the Masson tournaments, and composed the Masson problems as well. One year, he actually served as the Grand Prize! He showed up at the winner's choice of locations to play as many as 25 guests in a simultaneous exhibition! And, he brought all the Masson brandy, wine, and champagne with him!

The panel also shows the first Caissa Award winner (after the goddess of chess), sponsored by Paul Masson. It was given annually to significant chess promoters. Additionally, many photos from Masson tournaments feature several World Chess Champions, all rubbing elbows with Kolty in Saratoga, California.

Currently being assembled in Burton Avenue Rec Center Conference Room, the voluminous exhibit may someday reside in RECA headquarters. Both permanent and revolving displays are planned, featuring photographs, newspaper articles, posters, letters, game score sheets, books, medals, and various trophies and honors given to this true "Living Treasure of Chess." Thank you, Kolty.

Keith Halonen is a past President of the Rohnert Park Chess Club and currently on the Board of Directors of Redwood Empire Chess Association, where overwork and no pay have earned him the title of "World Chess Blindness Champion." Koltanowski once touched Keith's personal chess table, and now Keith swears that he can only play better with his eyes closed!

HELP THE YOUTH OF CHESS

KOLTY
CHESS FOR YOUTH FOUNDATION, INC
A NON PROFIT TAX-DEDUCTIBLE
ORGANIZATION FOR NORTHERN
CALIFORNIA YOUNGSTERS
18 YEARS OR UNDER

- WE GIVE CHESS SETS & BOARDS TO SCHOOL CLUBS FREE
- WE HELP INDIVIDUALS TO ATTEND TOURNAMENTS
- WE SPONSOR SCHOOL TOURNAMENTS
- WE SPONSOR TEACHERS FOR PROMISING YOUNGSTERS

SEND YOUR TAX DEDUCTIBLE DONATIONS
KOLTY CHESS FOR YOUTH
FOUNDATION, INC

P.O. BOX 2096 BURLINGAME CA 94010

FOR INFO CALL ALFRED HANSEN
415 342-1137



On the Move

FUTURE PLANS

MORE CHESS CLUBS

RECA efforts to promote and develop chess as a significant educational tool and as a prominent aspect of culture in the Redwood Empire do not end with our educational programs in the schools. While we are working toward a chess epicenter which will house gaming areas and a multi-media chess library open daily, we also recognize a definite need for small local clubs throughout the Empire. Rohnert Park Chess Club has members in Petaluma, Sonoma, Windsor, and points quite remote. We wouldn't want to dilute RPCC attendance, but with a modest amount of cooperative coordination, meeting nights could be staggered from town to town to afford their local players a local evening of chess at least once each week.

RPCC meets Monday & Saturday, Santa Rosa CC meets Friday, and Occidental CC on Tuesday. That leaves Wednesday, Thursday, and all day Sunday for other nearby towns. If you are interested in investing some time and energy in your area to form a solid, on-going chess club, write or phone Keith Halonen at OPEN FILE for some suggestions and help.

CLUB FORMATION GUIDEBOOK

In the works: a RECA guidebook for the formation and nurturing of your own local chess club. It will be perhaps a year, but we are employing a variety of information-gathering techniques to assemble a mountain of relevant material, from which we'll cull the most pertinent for our book.

CHESS SURVEY

This fits right in with what's gone before. The survey is still in developmental stages, but it assumes more importance as it evolves. It's projected date of completion is now mid-1988. Our survey must touch a lot of bases to provide us with the knowledge we seek. We will offer incentive prize drawings to respondents completing the survey in a timely manner. Chess sets, books, and other items will be awarded by random drawing to induce the widest participation possible.

The Ninth Rank

LETTERS TO THE EDITOR

CHESS OCCIDENTATION

Just a short note to say how much impressed I am with your latest issue. Along the youth lines which Will and Kolty talk about, I'd like to start a youth program here in Occidental. Got any good books I could start the kids with? Put me down as a RECA patron.

Bill Wheeler
Occidental

Chess Instructors highly recommend the COMPREHENSIVE CHESS COURSE by Pelts and Albur, for teachers of all age groups, or Independent study by grades 7 and up. Order by number from U.S. Chess Federation: N123PP Volume 1 - How to Teach Chess to Beginners 120 pgs 11st \$ 14.95 members \$ 13.45; N121PP Volume 2 - How to Teach Chess to Intermediate Players, 296 pgs 11st \$ 28.95 members \$ 25.95. I have a copy of Schmidt's "How to Teach Chess in the Public Schools," which you may examine, but it's a course outline only. USCF also has PAWN & QUEEN Volume 1, a set of 18 4-page work books for students grades 3-6. It covers piece moves & notation. USCF offers various combinations of the teaching materials in P&Q. See current USCF catalog for details. I used P&Q to teach a 5½-year-old who retains his lessons well even 6 months later. For more guidance, contact Will R., who will gladly share his acumen.

KH

HIGHLY PLACED PRAISES

The RECA newsletter is certainly one of the finest club publications I have ever seen. I enclose \$5.00 for a one-year subscription.

Andy Lazarus
Oakland

Submit all correspondence to
OPEN FILE

200 Avram Ave. Rohnert Park, CA 94928

FUNDAMENTALS

According to Max Euwe, A mathematician and former World Champion, we should analyze a position by looking at its "weak points" and its "strong points," rather than trying to mentally calculate a huge number of possible combinations. In his book STRATEGY AND TACTICS IN CHESS Euwe states, "Whosoever advances a piece into the hostile position must exercise caution; his piece becomes an object of attack and is exposed. In such a case special attention must be paid to the double attack. If there is a second weak point in the position and simultaneous attack on both weak points is possible, then as a rule, material loss can't be avoided."

Euwe's definition: "By weakness we

SUGGESTION



OPEN FILE encourages local players to submit from the NINTH RANK anything from practical hints to major criticisms for publication in the SUGGESTION BOX or in the LETTERS TO THE EDITOR column. We can not pay you, but if you offer a service or products, we'll run your camera-ready display ad or your CAP CLASSIFIEDS ad in exchange for your generous contribution.



by Paul Enright

I would like to propose changing the format of Rohnert Park Chess Tournaments.

A PROPOSED TOURNAMENT

OPEN SECTION

	OPEN to all	EXPERTS 2000-2199	A-Class 1800-1999	Under 1800
1st	\$ 150	\$ 100	\$ 100	\$ 50
2nd	\$ 100	\$ 50	\$ 50	

Entry Fee - \$25 by mail, \$30 at the site
(Base: 24 entries = \$600)

AMATEUR SECTION (OPEN to Under 1800)

	OPEN to under 1800	C-Class 1400-1599	D, E, & Unrated
1st	\$ 120	\$ 80	\$ 80
2nd	\$ 80	\$ 40	\$ 40

Entry Fee - \$20 by mail, \$25 at the site
(Base: 22 entries = \$440)

Time Controls: 30/90 then 25/1

Accelerated Pairings

Registration 8:30-9:30 am

4 Rounds - 2 Daily: 10:00 am & 3:30 pm

5 Grand Prix Points

Many reasons suggest this as an ideal schedule for Rohnert Park tournaments:

understand a piece or important square which is in a state of balance, one which is threatened as often as it is defended, but to which extra pressure can easily be applied... A strategic weakness is one that is difficult to defend, but is currently adequately guarded... A tactical weakness is one which is temporarily lacking protection, but can easily be protected."

Definition of strong squares... "safe squares for one's active men and such squares as lie beyond the reach of enemy pawns."

Strategic Principles for squares... "Create and occupy strong squares. Avoid weak squares in your position or at the least prevent them from being occupied by the opponent."

1 A 30/90 time control followed by 25/1 approximates the minimum standard for a FIDE-rated game of "no faster than 23 moves per hour" (30+25 moves/1.5+1 hours = 22 moves per hour). This control set is used by Jose Cucci in the N.Y. Open and by Bill Goichburg in the World Open. It gives time enough to analyze critical positions and will raise the quality of play in local tournaments.

2 Having no more than 2 rounds daily also meets minimum requirements for FIDE-rated play. Three rounds in a day exhausts players and diminishes quality of play.

3 The 2nd control of 25/1 gives proper respect to the endgame. It is ignorant to assume that as there are fewer pieces, accurate moves are found more quickly in such "simple" positions. Endgame play is very difficult and quite unforgiving of even the slightest error. Few things are more frustrating than playing a beautiful game for 4 hours only to botch the endgame due to a 50-100% increase in rate of play. 15 moves in 30 minutes or even faster is casual woodpushing, not serious chess. The 2nd control is also convenient in that there's no need to reset clocks. Just play on to the next hour.

4 By beginning at 10:00 am, and ending early at around 8:30 pm, the proposed tournament should encourage player attendance from Oakland, San Francisco, and the greater Bay Area, who must drive an hour or more to play here.

5 Spacing rounds 5½ hours apart makes it possible to rest and to eat between rounds. The present tournament runs rounds together in an unpleasant rat race.

Book Up

REVIEW by Keith Halonen

CALIFORNIA CHESS JOURNAL

Hans Poschmann, editor

Desktop Publishing

6 Dividing players in 2 sections with accelerated pairings avoids 1st and 2nd round mismatches inherent in the present open tournament. With the proposed schedule it is unlikely that anyone would ever be paired with an opponent whose rating isn't within 200-300 points of his own. Pairings of opponents more than 600-800 points apart are a meaningless waste of time. My observation is that such games are over in about an hour, leaving players 3 hours to mill about waiting for the next round, wishing they had been paired with a more appropriate opponent.

7 The \$5.00 late fee is enough. Higher late fees don't draw more money into the prize fund. Just the opposite. They do discourage the last-minute impulsive player from playing in our tournament.

8 The lower entry fee and greater proportion of prize fund given to lower-rated players will encourage more people to play.

9 There is very little financial risk. With the tournament based on 60 players, as per USCF guidelines, we only have to guarantee \$250 for Grand Prix points plus $\frac{1}{2}$ of the class prizes (\$395). The \$645 total can be covered by as few as 26 entries.

10 Lower-rated players may elect to play in the Open Section if they choose, but the prize fund of each section would be independent, and reflect the number of entries in each section. There would then be no question about lower-rated players subsidizing stronger players as there is in the present tournament.

Rohnert Park could be the site of high quality chess, pleasant for everyone. This tournament could be more frequent because of the lower entry fee. It deserves at least a few trials.

Paul M. Enright, Jr. is a USCF-rated Master with ample perspicacity when it comes to making his move. To study one of Paul's memorable games, check the GAME ANALYSIS column in the ANNOTATIONS section. And see the CAP CLASSIFIEDS in our ADVERTISING section for Paul's ad.

I should first point out that I am a newcomer to chess journalism in particular, and that OPEN FILE is an infant in the field of chess publications. From the vantage point of this vast experience, I'll render my C-player's opinion of other folk's work in my chosen arena of interest.

Hans Poschmann's CALIFORNIA CHESS JOURNAL is a 6-sheet $8\frac{1}{2}$ x 14 folded to 7 x $8\frac{1}{2}$ stapled 24-page desk-top publication. Those are the facts. From my fledgling position I envy the Subsection Editors list; not for the chess luminaries who appear in it, but that such a list of contributors exists at all!! Bookup bears my byline only because I haven't a comparable list of my own.

I have CCJ Vol. 1 No. 10 dated June 1987. I received an inquiry from Hans as to what program I used to create my diagrams with my text. Alas, I pointed out my resignation to an "elbow-grease" school of raw paste-up. Still, like Hans, I am waiting, hoping. CCJ diagrams are legible and just fine.

Coverage included the recent Senior Open and the World Open. An article for young players and another on the Danish Gambit indulged in some deep analysis. I have learned readers of smaller chess journals appreciate this. The Santa Clara County '87 Open provided substance for another article. The World Chess Festival got a mention. Handy are the Club Directory and Calendar on the back pages. All in all, a tidy little chess news package.

Advertising in desktop publications will ever suffer until the advertisers submit spec-true camera-ready art to publishers. The solution may lie in an ad rate & spec card or even a listing near the masthead on the credit page. Amateur publishers cannot afford

OPEN FILE seeks reviewers. If you like reading chess books and magazines, don't suppress that urge to opine on matters chess. Consider reviewing those favorite tomes for the BOOKUP column. We can't pay you, but if you offer any services or products, we'll run your camera-ready display ad or your CAP CLASSIFIEDS ad in exchange for your generous contribution.

to turn away advertisers based on poor esthetic sense, but overly busy ads and ads difficult to distinguish from column copy are a disservice to all concerned. A staff artist could handle design and paste-up from raw copy, and copy-camera services are imperative for half-tones or positive mechanical transfers.

The quick fix for this all too common problem is extensive use of graphic borders and dividers. It works for CCJ except in their dot-matrixed VOCAL Championships centerpage spreads. This sort of ad is a comprehensive tournament spec list providing readers with complete information. How such ads cry out for the designer's eye! Here is where desktop drawing software can make a marked difference, especially if budget looms large as an issue.

My criticisms really center on the backward aspects of desktop publishing, rather than on CALIFORNIA CHESS JOURNAL, which is a fine example of answering local demand for chess publications. I commend Hans Poschmann's taste in delivering CALIFORNIA CHESS JOURNAL with colored cover stock and liberal use of cover art. I hope I can afford to do the same some day soon. Until then, I'll have to settle for envy.

Keith Halonen sweeps the floors in OPEN FILE's editorial office, so he should know.

SHORTEST GAME

DJORDJEVIC-KOVACEVIK, BELA CRKVA 1984
1 d4 Nf6 2 Bg5 c6 3 e5 Qe5+ White resigned!

LATEST FIRST CAPTURE

CHAJES-GRUNFELD, KARLSBAD 1923
On move 57 the White's f5N x Black's e7N!

LONGEST WON GAME WITH NO CAPTURE

MEDINA-GLIGORIC, PALMA DE MALLORCA 1967
0-1 in 29 moves!

LONGEST CAPTURE SERIES

HEIDENFELD-LITTLETON, DUBLIN 1964
13 half-moves!

LONGEST MOVE SERIES BY ONE PIECE

MACKENZIE-MASON, LONDON 1882
(see Longest Piece Immobility
& Longest Unmoved Piece)

The Black queen made 73 consecutive moves!

LONGEST UNMOVED PIECE

MACKENZIE-MASON, LONDON 1882

(see Longest Move Series by One Piece
& Longest Piece Immobility)

After $\frac{1}{2}$ - $\frac{1}{2}$ at move 144, h7 & f7 unmoved!

LONGEST PIECE IMMOBILITY

MACKENZIE-MASON, LONDON 1882

(see Longest Move Series by One Piece
& Longest Unmoved Piece)

8...Kg8, & fixed to the end, move 144 $\frac{1}{2}$ - $\frac{1}{2}$!

Caissa's Blessing

OPEN FILE publishes relevant editorial observations and objective scientific reports from worldwide research on effects of chess study on scholastic performance and socio-cultural decision-making attributes. The pronounced positive influence of chess study on the learning process is what we call CAISSA'S BLESSING. Mars, the god of war, loved the dryad Caissa, but she did not return his attentions in kind. Mars persuaded the god of sport to invent a game to soften Caissa's heart.

MEMORANDUM:

Chess Instruction in School?

by Adriaan D. de Groot

The findings of cognitive research by Chase & Simon, and others, are hardly relevant. Since they relate to high level chess skills in (a happy few) adults, these results provide no basis for conclusions on learning effects of elementary chess instruction to school children. For one thing, it is clear that the specificity of the learning effects assimilated by a developing chessplayer increases strongly with scope and level of knowledge (repertoire skill). Since we are not concerned here with the development of chess mastery or expertise - let alone with raising child prodigies (Feldman) - but rather with much simpler goals, the research outcomes in question do not speak against the introduction of chess instruction in school.

CHESS IN SCHOOL?

In my opinion, the most important arguments available are of the common sense type. If such arguments are, first, embedded in a sound, rational problem analysis and second, supported by empirical research findings of a somewhat "softer" nature than those properly called (natural) "scientific" research, they can be very convincing. Several arguments appear to be particularly worth mentioning. Introducing youngsters to a game which is a cultural institution in its own right can be very well defended as an educational goal in its own right. Compare musical education: the question of whether it serves some other purpose apart from learning about music is rarely posed.

CAISSA'S BLESSING

Chess provides a cultural possibility, an interesting avocation or even a fascinating hobby to millions of people; it is a wide-spread international cultur-



al good, and means of communication (with a "language" of its own); it has a long history - in the Western countries at least some five centuries - a history interwoven with many other cultural developments; the game plays an intriguing role in many types of literature; its logical beauty, its clearcut "justice," its symbolic overtones have often been analyzed and praised; few other games have inspired as many psychological and psychoanalytical analyses and publications; the role of chess, in the last decades, as an experimental field for both the (pure) study of cognitive processes and the (applied) study of artificial intelligence is remarkable; and finally, the national and international popularity of chess as a sportive meeting ground for individuals, groups, and nations has risen much higher than that of any other comparable intellectual game.

As regards non-cognitive learning effects a few obvious points are these: learning to await one's turn, to keep to the rules (not to cheat), to try to win and to take it when one loses (after having done one's best); furthermore: learning that one learns, visibly, i.e. that by study and exercise one learns to play better - better than some others, if only by beating beginners.

REALITY LEARNING

In an age where there is a tendency to hypocritically - and unrealistically - expel intellectual competition from school life and to repress (or: soft-pedal) intellectual inequality, chess instruction will provide some educationally valuable opportunities for reality learning about human differences. By learning about and by playing chess one gets acquainted with a ladder - a hierarchy of levels and/or a "pecking order" of who-beats-whom (cp. in the higher regions chess Elo-points and for instance, Japanese "dans") - on the steps of which one's place is determined exclusively by the objective facts of one's playing strength. The rules are just, there is no cheating to the top, no discrimination; in chess - like in other comparable games, for that matter - the better player wins, by definition.

The educational point is that this ladder conception can be instrumental in learning to live with (a world of) differences in capacity - instead of avoiding the subject (that individuals are not equally gifted). Pertinent "fundamental experiences" - like those reported by our subjects - can be traced back to the very early stages of reality learning in chess; i.e., to the stages through which youngsters go when they learn about, and learn to play chess in school. For a few particular examples, chess can be instrumental in promoting the assimilation of such "facts of life" and "moral lessons" as these:

- 1 When I lose, I must (learn to) take it;
- 2 When I win, I had better not brag - if only because there are always better players;
- 3 My position in the ladder is open to change: by training and doing my best I may climb some - but so may others;
- 4 There is a limit to climbing (and falling down): my own (lack of) ability;
- 5 Different fields of achievement have different ladders: John may be stronger than I am or more popular, but I beat him in chess (vice versa);
- 6 There is at least one field - intellectual or moral, to be found or defined by a good teacher, if needed! - where my position is not at the low end of the ladder;

Long Diagonal

LOOKING BACK

- 7 There are always others who in some field are out of my reach in the ladder: they have "talent" (and may become really good at it some day);
- 8 Trying to climb is one thing, finding one's place - being "scaled" according to one's abilities in different fields - and adjusting to it is another important thing;
- 9 Looking at all possible ladders: neither is the sky my limit nor is the bottom row my destination.

One more comment is in order. Like in the case of physical education, an important asset of chess as an instrument of moral and reality learning and as a training field is exactly its being "a mere game," i.e., a sportive activity of relatively little scholastic and social consequence.

Note: Excerpted & abridged from original.

Adriaan D. de Groot is the author of "The Thought of Chessplayers. An Experimental Psychological Study" Amsterdam, N.V. Noord-Hollandse Uitgevers, 1946; "Noncognitive Teaching Effect of Chess Instruction" Amsterdam, 1970; "Methodology. Fundamentals of Investigations on Thought in the Behavioral Sciences" Gravenhage, Mouton en Co. 1972; "Thought and Choice in Chess" The Hague: Mouton, 1965; "Memorandum: Chess Instruction in School?" Schiermonkoog, December 1977; and coauthor of "Perception and Memory in Chess" RITP memorandum 24, Amsterdam, 1973; "Teaching Effects of the Study of Chess" Eindverslag, Amsterdam, 1974; and "Adaptation for Interview Questions, Supplement 4" Mijlage 4, Amsterdam, 1974.



OPEN FILE encourages local players to submit news articles, photographs, score sheets, correspondence, or any materials of pertinent significance, including original manuscripts, to the LONG DIAGONAL column, which is always LOOKING BACK at local Redwood Empire chess history. We can't pay you, but if you offer services or products, we'll run your camera-ready display ad or your CAP CLASSIFIEDS ad in exchange for your generous contribution.

Who are they?

They are all former members of Santa Rosa Chess Club. The gentleman to the right is Alex Sokol. Above, Mrs. Somerville, third from left, and the fellow on the left may be Frank Schneider, former SRCC President, though we are uncertain. If you can identify others, please let us know who they are.



Open Lines

GUEST EDITORIAL

OPEN FILE encourages local players to submit humor, fiction, anecdotes, or any chess-related observations. In the form of a GUEST EDITORIAL, to OPEN LINES. We can't pay, but if you offer any services or products, we'll run your camera-ready display ad or your CAP CLASSIFIEDS ad in exchange for your generous contribution.

George Koltanowski will autograph your copies of any of his books. "In the Dark" \$9.95 + .60 sales tax + \$1.00 P&H (total \$11.55). "TV Chess," "Colle System," and "America Salutes Comins Mensfield" (Introduction and problems by GK) are each \$5.50 + .33 sales tax + .50 postage & handling. Place your order now. Order directly from

George Koltanowski
1200 Gough St. Apt. D-3
San Francisco, CA 94109

HAVE YOU PLAYED THE POPE, GEORGE?



PHOTO KEITH HALONEN

BY GEORGE KOLTANOWSKI

Hold it - this is no joke. My friends in San Francisco keep on asking the question, "Have you played the Pope, George?"

How can I answer them? I don't know. Really, I don't know. I do not want to tell a lie and yet if I tell the truth it'll still sound like a lie.

DOES THE POPE PLAY CHESS?

But let's start from the beginning. John Paul II was to come to town on his tour of the United States. Steve Rubenstein, famous columnist of the San Francisco Chronicle and a chess nut if there ever was one, was driving me home from Safeway, when conversation turned to the Pope, who is also an avid chess player. At least he composed chess problems which had been published, as well as games played over the board.

GUEST EDITORIAL

HAVE YOU PLAYED THE POPE, GEORGE?

CONTINUED FROM PAGE 7

"You know," I innocently said, "Pope John Paul will be staying overnight at the rectory of St. Mary's Cathedral, and I live just across the street. Wouldn't it be great if he played me a game of chess? This on my birthday, September 17. Also, though I was born in Antwerp, Belgium, I am from Polish descent."

"That's great! We'll write him a letter," answered Steve

"It wouldn't be sacrilegious, would it?" I asked.

"We'll do it!" was the firm reply, and so the following letter was sent:

July 8, 1987

Dr. Joaquin Navarro-Valls
Director, Vatican City Press Office
Vatican City
Rome, Italy

Dear Dr. Navarro-Valls,

Among the many attributes of Pope John Paul II is his keen skill as a chess player.

Perhaps the Holy Father would be interested in a quiet game of chess during his upcoming visit to San Francisco. As I understand it, His Holiness will be spending the night of September 17 at the rectory of St. Mary's Cathedral. This is just across the street from my home. If the pontiff would care for a calming game of chess after his long motorcade through San Francisco, I am at the pontiff's disposal. It would be easy for me to walk across the street at his convenience.

In addition to being chess columnist for the San Francisco Chronicle since 1947, I hold the title of national grandmaster and am the former champion of my native Belgium. I hold the world record for blindfold chess and, at the age of 83, am the oldest blindfold chess player in the United States.

Incidentally, in the Holy Father's game against Wanda Zartobliwy, played in Cracow 40 years ago, which has been published in our national chess magazine, I believe His Holiness could have won more quickly by playing the move 11...BxP. This wins a pawn and it keeps the pontiff's bishop on the open diagonal. A man of the cloth should not be so eager to trade a bishop for a horse. There might have followed 12 R-QN1 B-N2 13 Q-N4 P-KB4 14 Q-R5ch K-B1 and the Holy Father would have had a much stronger position.

At any event, I look forward to a pleasant game with the Holy Father. As the Bible tells in Second Samuel, "Let the young men now arise and play."

Sincerely, George Koltanowski

Weeks rolled by. Never a word. Good promotion for chess seems to be a lost cause. I went more often to the Chronicle office to see if something came in from the Vatican. Nothing. All of a sudden, an assistant city editor at the paper asked me if I had heard yet from Italy. It became an open secret. So naturally I told some of my friends of my effort to promote a game with the Pope. Would the Chronicle publicize the event if the match went through? You bet it would. But then it became apparent the Pope would be exhausted after a day of travel, sermons, Mass, meeting people, obligatory ceremonies with no let-up during the following days until his return to Rome. Well, we had tried! It would have been a wonderful experience and certainly terrific promotion for the game of Chess all over the world.

Then I became involved as Program Director for the Pan-Pacific International, first of its kind in San Francisco. That too ended Thursday, September 17!

Well, the 17th rolled around. No news from anyone of the Vatican, and the TV pictures showing the weary travels of the Pope meant that I could just as well forget any match game that day. I left the chess tournament at 5, turning down an invitation to a dinner party for the prize-distribution later that evening in a Chinatown Restaurant.

PAPAL SECURITY

There was no bus service on Geary, so I had to walk from Van Ness to Gough, 2 blocks uphill. After 1 block I ran into a barrier. On the other side, policemen galore. I got through the barrier, but I had to show that I lived at 1200 Gough Street. Gough had an army of police all over the street, on top of the roofs as well as on the roof of the Cathedral. In our building alone there were 2 SWAT teams.

All very impressive. Priests and nuns were filling the Cathedral, but they all had to pass through a firearms control barrier. I watched all the proceedings on TV and then it was early to bed with me.

NOCTURNAL GOINGS-ON

Now it starts. Around quarter to eleven the phone rang. Who could be calling that late, I wondered, as I sleepily picked up the phone and said, "Yes?"

"I'm sorry to call this late," said a strange voice, "but if you are still interested in playing a game of chess, we will be happy to take you across to the Rectory." I couldn't believe my ears! Leah was fast asleep. So I nodded into the phone, then whispered, "I will be down in a few minutes."

I was down in the lobby in exactly 3 minutes. Four men waited for me. Two policemen, one in plain clothes, and the spokesman, a priest of high rank. He wore a red "yamulka."

He introduced himself, but I was too nervous to know what he was saying. We walked out into the cool air. The street was all lit up, as was the Cathedral. We crossed the street at the middle (there was no traffic whatsoever) and I was stared at by hundreds of who-knows-who.

HIS HOLINESS

I was taken down some corridors, and entered a very brightly lighted room, where the Pope was standing by a sort of bridge table, which had a beautiful chess board and large Staunton chess set on it ready for battle. The Pope looked very tired. The priest introduced me and the Pope came forward, shook my hand warmly, and asked me, "Resumye Popolski?"

I stammered my answer, I believe, and said "No, my parents used to speak to each other in Polish, but not in front of the children."

"I appreciate your willingness to play me a game of chess, especially at this hour of night. But it stimulates me," added the Pope, "before retiring after a busy and tiring day."

I don't exactly remember how I got the Black pieces, but that did not bother me. When I sat down opposite the Pope, I noted for the first time that like the priest with the red yamulka, the Pope wore a white yamulka, and that there were a few other dignitaries present. That late?, I wondered, as I awaited the Holy Father's first move.

The game lasted about an hour, interspersed with questions by the Pope about the champions of today. After the game was over,

the same priest led me back to my building, and this after profuse thanks from the Pope himself for playing.

COMES THE MORROW

Next morning, I woke up still not believing the game actually took place. "Have you played the Pope, George?" will be a teaser for years to come, but I intend to see a psychiatrist soon and clear this thing up once and for all. You see, I do have a good retentive chess memory, or how else could I have set world records in blindfold play? Though I did not write down the moves during the game with the Pope, I remember it, and expect you want to see it. So I better show it to you:

The Pope - Kolty

- 1 d4 d5
- 2 c4 Nf6
- 3 cxd5 Nxd5
- 4 e4 Nf6
- 5 Nc3 e5

A bit wild, but worth a try!

- 6 Nf3 exd4
- 7 Qxd4!

Good positional sense. After the exchange of queens, White should have little to fear.

- 7 ...Qxd4

- 8 Nxd4 c6
- 9 Bc4 b5
- 10 Bb3

Surely Bd3 was safer.

- 10 ...b4

A pawn is a pawn... in any lan-

guage.

- 11 e5 Ng4
- 12 Ne4 Nxe5
- 13 f4

Better would have been to castle first.

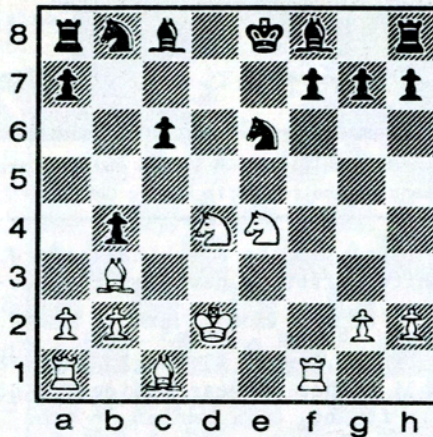
- 13 ...Nd3+

- 14 Kd2

Surely Ke2 was better. Black now picks up a second pawn. My opponent must be tired.

- 14 ...Nxf4

- 15 Rf1 Ne6



- 16 Kd3

With 16 Nxe6 Bxe6 17 Bxe6 fxe6 18 Ng5, White regains at least one pawn.

- 16 ...Ba6+
- 17 Bc4 Bxc4+
- 18 Kxc4 Nxd4
- 19 Kxd4 Nd7
- 20 Ng5 f6
- 21 Ne6 Kf7
- 22 Nxf8 Rhxf8

- 23 Kc4 a5
- 24 b3 Ne5+
- 25 Kc5 Rfd8
- 26 Bf4 Rd5+
- 27 Kb6 Rb5+
- 28 Kc7 Ra7+
- 29 Kc8 Ra8+

I wanted to show, I believe, that I had a draw by perpetual check...

- 30 Kc7 Ra7+

If now 31 Kd6 I would mate the Pope with 31...Rd7. It never got so far. I don't recall any further moves. I don't remember if we called it a draw or if I won it. All I know is I woke up the following morning and thought of the game recorded above.

You won't believe and I don't understand, but I will soon know if I played the Pope. But honestly, I don't know if I played the Pope. I really don't.

George hasn't heard a phone ring, once he is in bed and asleep, in the last ten years. He doesn't wear his hearing aid in bed. I would have woken up easily if the phone had rung after ten that night. The proposed encounter with the Pope was on George's mind, so I feel sure he must have dreamed the battle with the Pope. Sorry, George, but facts are facts!

Leah Koltanowski

Footnote: That does it. I will not have to see a psychiatrist. And don't ask me, "Have you played the Pope, George?" G.K.

And the Winner is ...

PROBLEM COMPETITION

AND THE WINNER IS...

Nobody! Yes, Nobody correctly identified the key move 1 Ne6.

And that's who got the \$5.00, too... Nobody. Sure, you all figured it out, right? But Nobody needed \$5.00 bad enough to make a phone call!

After 1 Ne6 Kxe6 or Ke5 is met with 2 Qf5; 1...Kc6 2 Qb5; 1...Kc4 2 Qb3. Congrats, Nobody!

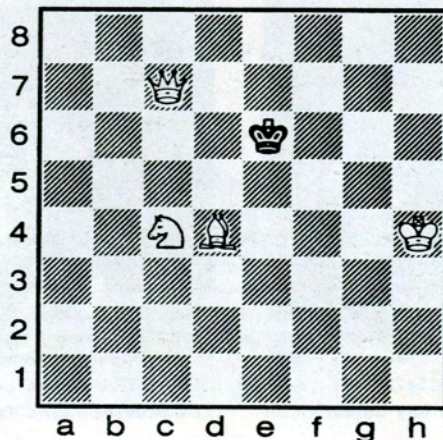
PROBLEM SOLVING RULES

- 1 NO BOOKS! NO COMPUTERS! Only honor-bound humans relying on their own innate analytical powers are eligible!
- 2 NO GUESSING! If you submit an incorrect key move, you are disqualified. No analysis or refutation of your incorrect key will be given!

3 PHONE 707 795-9377, Tell the person or machine your name and phone number, and White's key move. ONLY PHONE CLAIMS WILL BE HONORED!

4 ONLY ONE PRIZE to any one solver over the course of any four problems in the competition.

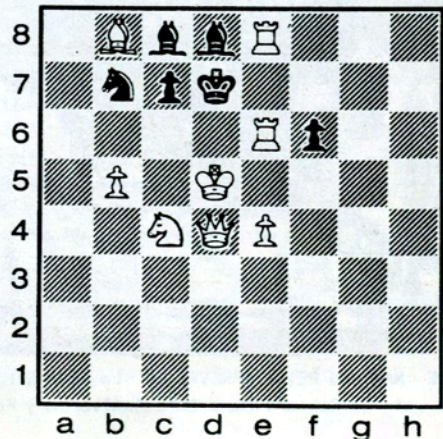
And what does your effort get you? Usually \$5.00, but wait!



Nobody's proffered the correct answer to last issue's problem! So you now vie for \$10.00!

Caissa's purse must have a torn seam! But you'll have to work twice as hard to get in!

This issue's problems courtesy of Karol Wojtyla, who is better known as His Holiness Pope John Paul II. Both compositions are white to move and mate in two:



Annotations

GAME ANALYSIS

OPEN FILE encourages local players to submit their games to the GAME ANALYSIS column in the ANNOTATIONS section. We can't pay you, but if you offer services or products, we'll run your camera-ready display ad or your CAP CLASSIFIEDS ad in exchange for your generous contribution.

Rohnert Park FOUNDERS DAY SIMUL!

P. Manetti - M. Fontana
Rohnert Park 1987

French Defence
Alekhine-Chatard Attack

Analysis by Peter Manetti

- | | | |
|---|------|------|
| 1 | e4 | e6 |
| 2 | d4 | d5 |
| 3 | Nc3 | Nf6 |
| 4 | Bg5 | Be7 |
| 5 | e5 | Nfd7 |
| 6 | h4!? | |

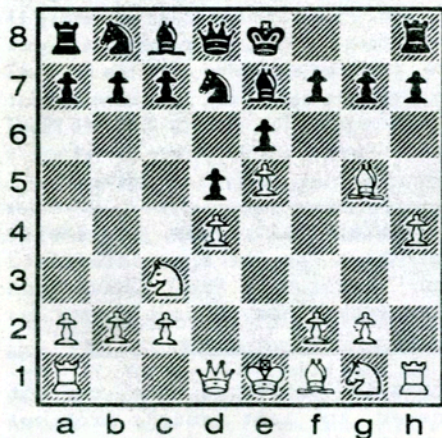


PHOTO KEITH HALONEN

PETER MANETTI & DON STEERS changing the guard at half-time in RECA's CHESS SIMUL

This is the Alekhine-Chatard. White offers a pawn for counter-play.

6 ...c5

If 6...Bxg5? 7 hxg5 Qxg5 8 Nh3! Other moves besides ...c5 are f6, h6, 0-0, and a6.

7 Nb5

Also 7 Qg4 Kf8 8 Nf3 Nc6 9 Qf4 cxd4 10 Nb5 a6 11 Nxd4 Nc5 12 0-0-0 Qc7 13 Bxe7 Nxe7 14 h5 h6 +=; or 7 Bxe7 Kxe7 8 Qg4 Kf8 9 Nf3 cxd4 10 Qxd4 Qb6 11 Qxb6 axb6 12 0-0-0 Nc6 13 Re1 d4 14 Nb5 Ra2 =.

7 ...0-0?

7...f6! is better. Other lines are 7...cxd4?! 8 Nd6+ Kf8 9 Bxe7 Qxe7 10 Nc8 Qb4+ 11 Qd2 Qxb2 12 Rd1 Nc6 13 Nd6 Ndx5 14 Nb5 +- . Or 7...Nc6 8 Nd6+ Kf8 9 Qh5 g6 10 Qh6 Kg8 11 Be7 Qe7 12 f4 Nxd4

13 Bd3 c4 14c3 with compensation for the material.

8 Nd6?

Better is 8 Bxe7 Qxe7 9 Nc7 Nb6 10 Nxa8 Nxa8

8 ...Bxg5?

9 hxg5 Qxg5

10 Bd3 f5

11 Qf3

Also 11 Nf3 Qxg2 12 Rg1 Qh3.

11 ...Nc6

12 Nh3 Nxd4?

Losing a piece unnecessarily. 12...Qe7 is better.

13 Nxc5 Nxf3+

14 Nxf3

Also 14 gxf3 is good. The rest of the game reflects conditions brought about in the opening.

14 ...c4 29 Bg4 Kf7

15 Be2 Nc5 30 Rh2 Rf1+

16 0-0-0 Ne4 31 Ke3 Rb1

17 Nxe4 fxe4 32 a3 a5

18 Nd4 Rxf2 33 Rxh7 Rxb2

19 g4 Bd7 34 Rh8 Ra2

20 Rdf1 Raf8 35 Rb8 Rxa3

21 Rxf2 Rxf2 36 Rb7 Rxc3+

22 Rf1 Rg2 37 Kf4 Ke8

23 Kd2 a6 38 Bxe6 Bxe6

24 Ke3 b5 39 Nxe6 Rf3+

25 Rf2 Rg3+ 40 Kg4 b4

26 Kf4 Rg1 41 Nxc7+ Kf8

27 c3 Kf7 42 e6 res.

28 g5 Kg6 1-0

Peter Manetti, a USCF-rated master when he last played tournament chess some years back. That was before computers, so Calisse alone knows his current playing strength. We have put the screws to him to persuade him to resume rated play. Peter lives in Guerneville, where he carves from wood the most intriguing and exquisite sculptures. On Tuesday nights, Peter may be found presiding over the boards of Occidental Chess Club in that town's historic Union Hotel.



PHOTO WILL ROGERS

THE NAVY vs PETER MANETTI at the RECA SIMUL in Allica Park gazebo at the Rohnert Park 25th Anniversary Founders Day Celebration



PHOTO WILL ROGERS

DON STEERS took over the 10-board booth to smash out thirty-two consecutive wins in 2 hours, bringing the day's score to 44-zero

A MEMORABLE GAME

Paul Enright - Fred Lindsay
2150 2350

Los Angeles 1980

Analysis by Paul Enright

I played Black against Fred in the 1979 Calchess Masters Open in Berkeley. What I most remember about that game, besides losing horribly, was that Fred rudely glared at me throughout the game. As this was my 1st masters tournament, I assumed it wasn't unusual and filed no complaint.

This time I had White and I decided to try an idea employed by Ljubojevic very successfully in recent tournaments. White plays into the Dragon but avoids the overly analyzed Yugoslav Attack. I was very irritated by Fred and was determined to take the game seriously. I was chained to my chair from the beginning and I resolved to never let up.

- 1 e4 c5
- 2 Nf3 Nc6
- 3 d4 cxd4
- 4 Nxd4 g6
- 5 Nc3 Bg7
- 6 Be3 Nf6
- 7 Bc4 0-0
- 8 Bb3!?

If 8 h3 Nxe4 9 Nxe4 d5 equalizes. Psychologically, this wasn't a worry, since Fred would not have played a simplifying equalizer, because he was rated 200 points ahead of me at the time.

8 ...d6?!

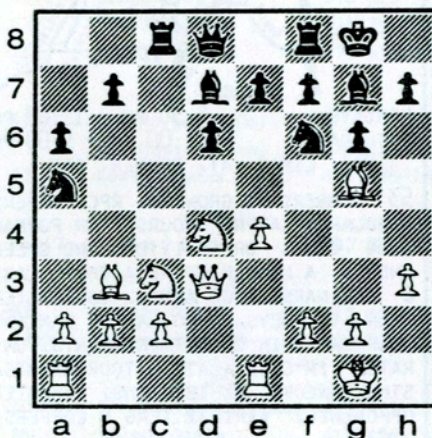
A much better idea is 8...a5 as 9 f3 d5! 10 exd5 Nb4 11 Nde2 a4! 12 Nxa4 Nfxd5 allows great play for Black, not then known. Two years later John Donaldson crushed me with this line, and that is one of the main reasons I've given up playing 1 e4.

- 9 h3!? Bd7
- 10 0-0 Na5
- 11 Qd3 Rc8
- 12 Bg5

USCF-rated Master Paul M. Enright, Jr. is a Rohnert Park player who has squared off opposite the chess elite. Paul's Ideas for operating a chess tournament are detailed in the SUGGESTION BOX in our NINTH RANK column. Also, please see his CAP CLASSIFIEDS ad in ADVERTISING.

My idea is to play Nd5 threatening exchange on f6 to cripple Black's pawns. Also, the bishop exerts indirect pressure on the e7 pawn. If Black plays Nxd5, after exd5 the e-file opens and White's rooks and queen bishop will exert great pressure.

- 12 ...a6
- 13 Rfe1



Anticipating Nd5 and the opening of the e-file, as well as centralizing.

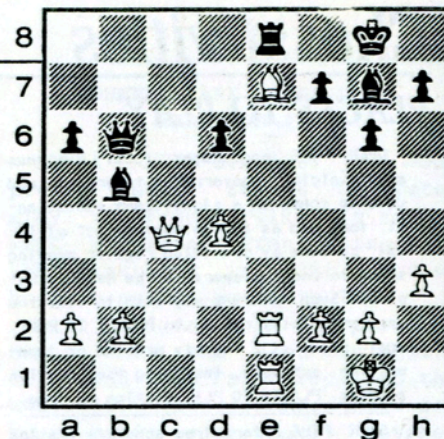
- 13 ...b5
- 14 Nd5! Nxd5
- 15 exd5 Re8
- 16 c3

Restraining the bishop on g7 and the rook on the c-file.

- 16 ...Nc4
- 17 Re2

Economy of play. Defending the pawn at b2 as well as readying Ra1 increasing pressure on e7.

- 17 ...Rc5
- 18 Rae1 Rxd5
- 19 Bxe7 Qb6
- 20 Bxc4 bxc4
- 21 Qxc4 Rxd4
- 22 cxd4 Bb5



23 Bxd6!!

Until this point, throughout the game Fred had played all his moves instantly, which was very disconcerting. I couldn't figure whether he wasn't serious about the game, was stoned, or what. He had used 10 or 12 minutes, most of which was spent wandering around the hall.

It turns out he had played the same game with Senior Master Joe Bradford very recently, and he had won with this exchange sac. However, 23 Bxd6!! refutes the whole line.

For example, if 23...Bxc4 24 Rxe8+ Bf8 25 Bxf8 threatening both Bh6# and Bc5 discovered check, winning the queen.

If 23...Rxe2 24 Qc8+ Re8 25 Rxe8+ Bf8 26 Bxf8 wins. Over the board, I saw that in this line after 24...Be8 25 Qxe8+ Rxe8 26 Rxe8+ Bf8 27 Bxf8 there is the annoying 27...Qc6! which gives good chances of survival. Black will have queen versus rook, bishop, and 2 pawns, a probable draw. For this reason I almost rejected 23 Bxd6!! Then I saw that after 24...Be8 simply 25 Rxe2 Qxd6 26 Rxe8+ Bf8 27 Rxf8+ leads to an easily won King and pawn ending.

If 23...Rd8 24 Bc7 Bc4 25 Bb6 Be2 26 Bd8 wins.

The game continued:

- 23 ...Ra8
- 24 Qd5 Rd8
- 25 Re7 resigns

1-0

The opening played is a good way to avoid the main lines of the over analyzed Dragon and Accelerated Fianchetto. However, the equalizing line at move 8 needs more work, which is what makes chess beautiful.

Of course, time was of the essence. I never would have risked my queen with only 3-4 minutes thought. The half-hour I spent made a beautiful game possible. The time control was 40/2.



Chesstivities

PLACES TO PLAY

OPEN FILE encourages local business and municipal government to promote and develop chess as a significant educational tool and as a prominent aspect of local culture by providing regular meeting space to chess players in the Redwood Empire. Such patrons may wish to list the available play hours in PLACES TO PLAY. Just send us a legibly printed or typewritten schedule, including the location address. PLACES TO PLAY listing is free.

OPEN FILE offers free schedule listing in PLACES TO PLAY for local chess clubs, and OPEN FILE encourages clubs to submit ad copy and publish rating rosters in PLACES TO PLAY. To obtain this valuable promotion, your club must apply for the OPEN FILE CLUB DEAL. The DEAL is more than a mere subscription. Find details and coupon in the MEMBERSHIP column.

MARKEY'S CAFE & COFFEE HOUSE

EVERY DAY 8:30 AM - 9:30 PM
TUESDAY IS CHESS DAY
316 WESTERN AVE, PETALUMA

PETER MARKEY LIKES CHESS PEOPLE & HAS SPONSORED AN AMATEUR TOURNEY AT HIS CAFE. SCRUMPTIOUS VEGETARIAN CUISINE AT REASONABLE PRICES. SMOOTHIES, JUICES, WATERS, SODAS, REGULAR & ESPRESSO COFFEES, WINES & BEERS, PASTRY.
707 763-2429

OCCIDENTAL CHESS CLUB

TUESDAYS 7:00 .. - MIDNIGHT
UNION HOTEL
MAIN ST. OCCIDENTAL

LOCATED IN THE ANTERIOR OF THE EXCELLENT UNION HOTEL IN LIAN RESTAURANT, OCC OFFERS REGULAR HOURS FOR FORMAL GAMES OR SKITTLES AND SPEED CHESS. RESTAURANT SUPPLIES COFFEE.
707 869-3208

En Passant

THANK YOU

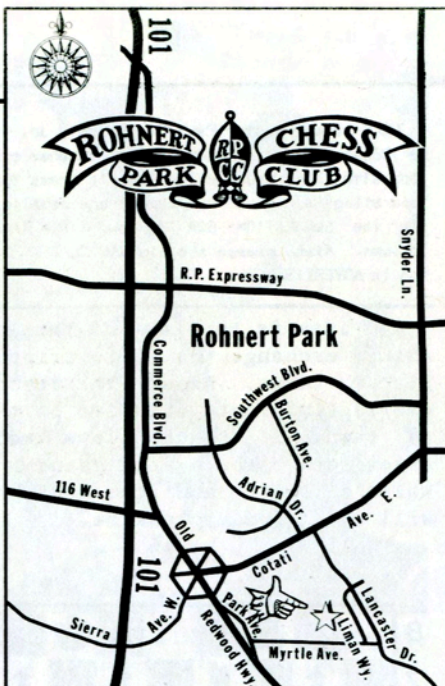
To William Wheeler, Matt Haws, Steven Matthews, & Andy Lazarus; never fear, we're finally opening an account and your checks will soon clear.

A SPECIAL THANK YOU

To Will Rodgers & Walt Randle for breathing life into RECA and devotion to chess promotion. To Joe Thomas & Chris Seronello at Media Matrix for darkroom & typesetting services. To Ken Voss & Printing Express for getting it done well and proper. And also to Paul Enright, Peter Manetti, and Will Rodgers for taking time to contribute to this OPEN FILE.

A VERY SPECIAL THANK YOU

To George and Leah Koltanowski for their ongoing support.



MONDAYS 6:30 PM - 11:00 PM
SATURDAYS 11:00 AM - 5:00 PM
8517 LIMAN WAY, ROHNERT PARK

53 MEMBERS & GROWING, RPCC OFFERS REGULAR PLAYING HOURS FOR FORMAL LONG GAMES OR SKITTLES AND SPEED CHESS, A NUMBER OF RECA CHESS LABS & SEMINARS, FOUR ANNUAL USCF-RATED OPEN TOURNEYS, REGULAR & GAME/30 USCF-RATED IN-CLUB TOURNAMENTS, UNRATED IN-CLUB AMATEUR TOURNAMENTS, SIMULTANEOUS EXHIBITIONS, COMPUTER OPPONENTS, VARIETY TEAS & COFFEES.
707 795-2220 OR 707 795-9377

PAPA RON'S

MON-FRI 9:00 AM - 1:30 PM
EVERY DAY 6:30 PM - 11:00 PM
1206 MENDOCINO AVE, SANTA ROSA

CHESS PLAYED ANYTIME. EXCELLENT COFFEE BAR, JUICE & OTHER BEVERAGES, FINE FOOD.
707 523-1855

HELP THE YOUTH OF CHESS

KOLTY
CHESS FOR YOUTH FOUNDATION, INC
A NON PROFIT TAX-DEDUCTIBLE
ORGANIZATION FOR NORTHERN
CALIFORNIA YOUNGSTERS
18 YEARS OR UNDER

- WE GIVE CHESS SETS & BOARDS TO SCHOOL CLUBS FREE
- WE HELP INDIVIDUALS TO ATTEND TOURNAMENTS
- WE SPONSOR SCHOOL TOURNAMENTS
- WE SPONSOR TEACHERS FOR PROMISING YOUNGSTERS

SEND YOUR TAX DEDUCTIBLE DONATIONS
KOLTY CHESS FOR YOUTH
FOUNDATION, INC
P.O. BOX 2096 BURLINGAME CA 94010

FOR INFO CALL ALFRED HANSEN
415 342-1137

SANTA ROSA CHESS CLUB

FRIDAYS 7:30 PM - MIDNIGHT
SANTA ROSA JUNIOR COLLEGE
1501 MENDOCINO AVE, SANTA ROSA
BARNETT HALL, BLDG 12, ROOM 1282

ALMOST 50 YEARS OLD, SRCC OFFERS REGULAR HOURS FOR FORMAL GAMES OR SKITTLES AND SPEED CHESS, IN-CLUB TOURNAMENTS, PERSONAL INSTRUCTION AVAILABLE - USCF EXPERT DON STEERS
707 528-9844

REDWOOD EMPIRE CHESS CLUBS CLUBS MUST SUBMIT SCHEDULE

CHICO CC FRI 7-11PM 1444 MAGNOLIA
ST CONF HALL RM 2 916 342-4708

NAPA VALLEY CC THU 3:30-8 PM YNTVL
VET HOME LEE LOUNGE 707 253-0648

NOVATO CC NOVATO COMMUNITY HOUSE
MACHIN AV AT DELONG 415 456-1540

OCCIDENTAL CC TUE 7PM-MIDNITE THE
UNION HOTEL MAIN ST 707 869-3208

ROHNERT PARK CC MON 5:30-11PM &
SAT 11AM-5PM LADYBUG PARK REC CNTR
8517 LIMAN WY 707 795-2220

SACRAMENTO CC WED 7-11PM SENIORS
CNTR 915 27TH ST 916 929-2952

SANTA ROSA CC FRI 7:30PM-MIDNITE
SRJC 1501 MENDOCINO AV BARNETT
HALL BLDG 12 RM 1282 707 528-9844

VALLEJO CC FRI 7:30PM SENIORS CNTR
333 AMADOR ST 707 642-7270

GREATER VALLEJO CHESS ASSN SAT
5:30PM REC CNTR 1121 WHITNEY AV &
FAIRGROUNDS DR 707 557-0707

YUBA SUTTER CC TUE 6:30PM-MIDNITE
BUTTES CHRISTIAN MANOR 223 F ST
MARYSVILLE 916 742-7071

LEISURE LINC

ANY DAY, ANYTIME, IN YOUR OWN HOME

IF YOU HAVE A PERSONAL COMPUTER EQUIPPED WITH MODEM/COMMUNICATIONS SOFTWARE, \$29.95 BUYS LINC MEMBERSHIP PLUS \$15.00 FREE ONLINE TIME. USCF CAN SELL YOU ALL OR ANY PART OF AN EXPANDABLE IBM XT COMPATIBLE COMPUTER PACKAGE AND LIESURE LINC. LINC MAKES THE CHESS WORLD LOCAL, AND THAT'S WHY WE PROMOTE IT IN A MAGAZINE DEVOTED TO LOCAL CHESS. MENU FEATURES: ELECTRONIC-MAIL CORRESPONDENCE/OVER-THE-BOARD GAMES; SET TIME CONTROLS WITH YOUR OPPONENT; FIND SPEED GAMES ANYTIME DAY OR NIGHT; PLAY IN RATED USCF TOURNAMENTS; WATCH LINC'S NEWSROOM FOR USCF PRESS RELEASES & IN-PROGRESS CHESS EVENTS (CURRENTLY, THE WORLD CHAMPIONSHIP); MONITOR GAMES PLAYED BY OTHERS; SIMULS & LESSONS BY TOP MASTERS, IMS, & GMS; E-MAIL; ELECTRONIC CONFERENCING; TWO-WAY BULLETIN BOARDS; BACKGAMMON, CHECKERS, BLACKJACK, SPORTS, ETC. FOR DETAILS, SEE CURRENT USCF CATALOG.

LEISURE LINC

BUILDING 9, TERRACE WAY
FOUR SEASONS EXECUTIVE CENTER
GREENSBORO NC 27403
800 826-9688 OR 919 855-3491

NOV 15, 1987

Tournament Update

OPEN FILE encourages local chess clubs to promote chess tournaments and publish their results in the TOURNAMENT UPDATE column. To get this valuable promotion, your club must apply for the OPEN FILE CLUB DEAL. The DEAL is more than a mere subscription. Find details and coupon in the MEMBERSHIP column. Join RECA & save!



ROHNERT PARK
TOURNAMENT CHESS CLUB

THIRD ANNUAL WINTER OPEN

SAT JAN 16 - SUN JAN 17, 1988
BURTON AVENUE REC CENTER
7421 BURTON AV, ROHNERT PARK

ROUNDS:

SAT 10 AM, 2 PM, 6:30 PM
SUN 10 AM, 4 PM

OPEN PRIZE: \$250 GUARANTEED

CLASS PRIZES

(MIN 10 PLAYERS OR CLASS PLAYS UP)

EXPERT - \$150 / A - \$125

B - \$100 / C & UNDER - \$75

UNRATED IN OPEN ONLY

ONE PRIZE PER PLAYER

ALL PLAYERS COMPETE FOR OPEN PRIZE

ENTRY FEE \$20

IF POSTMARKED BY JAN 11

\$25 AT DOOR

REG, PRE-REG CHECK IN 8:30-9:30 AM

MAIL INFO & CHECK TO WALTER RANDLE

842 LILAC WAY, ROHNERT PARK, 94928

FOR FURTHER INFO 707 795-2220

SEND S.A.S.E. FOR REG CONFIRMATION



THE RPCC -30-30-30- TOURNAMENT

- 1 OPEN TO DUES-CURRENT MEMBERS OF ROHNERT PARK CHESS CLUB.
- 2 ENTRY IS FREE.
- 3 FIRST TIME CONTROL IS 30 MOVES IN 30 MINUTES, AND...
- 4 FIRST PRIZE IS A \$30 USCF GIFT CERTIFICATE GOOD TOWARD PURCHASE OF CHESS EQUIPMENT OR BOOKS, AND DONATED BY AN ANONYMOUS LOCAL SOFTWARE SERVICE.
- 5 A SECOND 15-MINUTE SUDDEN DEATH TIME CONTROL TAKES EFFECT WITH BLACK'S TIMELY 30TH MOVE.
- 6 GAMES PLAYED ACCORDING TO INTERNATIONAL RULES - TOUCH MOVE ETC.
- 7 GAMES MUST BE RECORDED NORMALLY TO MOVE 30; SUBMIT SIGNED SCORE-SHEET TO C. FALBO OR K. HALONEN.
- 8 WINNER IS PLAYER SCORING MOST POINTS (MIN 10) BY 12/31/87.

ROHNERT PARK CHESS CLUB MARATHON #2

Eight RPCC members just completed seven rounds of rated play in Frank Folkman's second RPCC Marathon. Frank introduced the Marathons in 1986, and we hope to see it again in 1988.

Will Rodgers took the place of honor when the cash was passed out, and Clem Falbo received the under-1800 prize. Marathons are round-robin once-weekly matches played by international rules and rated by the U.S. Chess Federation. The entry fee reflects the low overhead of operating an in-club tournament, making this sort of event an ideal introduction to the tournament scene for novice players.

OCCIDENTAL DOUBLE ROUND ROBIN SPEED CHESS TOURNAMENT

by Will Rodgers

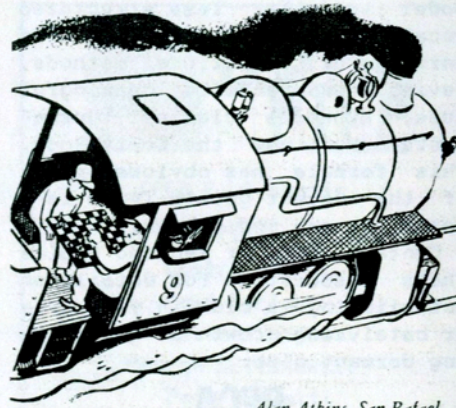
Peter Manetti clearly dominated the scene at this local event held AUG 18, 1987, at the Union Hotel in Occidental. In a strong field including one expert and two A players, Peter finished 5 points ahead of his nearest rival, with a perfect score of 18-zip. Great work, Peter! Big fun was had by all.

Peter Manetti	18 - 0
Matt Healy	13 - 5
Frank Folkman	12 - 6
Dan Gervasoni	9 - 9

Checkles

SWINDLED HUMOR

Chess By All Means



Alan Atkins, San Rafael

MOST CHECKS

FRANZEN-HAUSNER, TRNAVA 1982
104, 28 by White & 76 by Black!

DECEMBER

5	Richmond Sectional	415 234-5336
5-6	Yountville	707 944-4878
6	Vallejo	707 557-0707
20	Vallejo	707 557-0707
26-27	San Jose	408 241-1447

JANUARY 1988

8-10, 16-17, 23-24	SF Mechanics	
	N Cal Champ Bagby	415 652-5324
16-17	Rohnert Park	707 795-2220
31	Novato Quads	415 456-1540

FEBRUARY

6-7	Palo Alto/Syntex	415 967-6406
13-15	Berkeley/People's	415 658-4454
20-21	Sunnyvale/LERA	916 525-7912
27	San Jose/Game 30	408 224-5781
28	Novato Quads	415 456-1540

MARCH

19-20	San Rafael N Cal	
	Scholastic Champ	415 237-7956
27	Novato Quads	415 456-1540

APRIL

16-17	Rohnert Park	707 795-2220
-------	--------------	--------------

MAY

22	Novato Quads	415 456-1540
28-30	Sunnyvale/LERA	916 525-7912

JUNE

10-12	SF Mechanics Stamer	415 421-2258
26	Novato Quads	415 456-1540

JULY

9-10	Rohnert Park	707 795-2220
------	--------------	--------------

RPCC IN-CLUB SIMUL

by Keith Halonen

A spontaneous simul took place July 25 at Rohnert Park Chess Club when seven members ganged up on Peter Manetti to give him what-for o'er the 64.

Only Peter Proehl emerged to the good during that encounter. In typical fashion, Manetti damaged the other six boards with little problem. The club championship is officially vacant in view of the new dues-cycle, and particularly as Tony D'Aloisio has moved to San Francisco and has not renewed his membership. This reporter thinks RPCC ought to institute a fresh competition for that title.

Keith Halonen reports from firsthand experience. He thought he was doing just fine until Peter Manetti squeezed the life from his rook and pawns endgame (Peter's forte).

LONGEST SERIES RECIPROCAL CHECKS
RUBINETTI-NAJDORF, MAR DEL PLATA 1979
& PORTISCH-PINTER, HUNGARY 1984
4 Half-moves!

Club Scene

OPEN FILE encourages local chess clubs to publish club news in the CLUB SCENE column. To get this valuable promotion, your club must apply for the OPEN FILE CLUB DEAL. The DEAL is more than a mere subscription. Find details and coupon in the MEMBERSHIP column. Join RECA & save!



METAMORPHOSIS!!

On Monday NOV 23, Rohnert Park Chess Club undertook a dynamic change introduced by President Walter Randle. Bylaws and a code of ethics were adopted with only minor modification to their original content. About 60% of the dues-current members (RPCC dues date: SEP annually) were in attendance. Copies of the bylaws and code of ethics are available at the club. see PLACES TO PLAY for map schedule.

The bylaws specify formal voting considerations creating self-governance by the membership. To cut through clauses, a governing board of elected officers okay's spending over \$50, provides policy and direction, appoints additional officers or committees as needed, and advises the City of Rohnert Park on the Kolty Museum, now being assembled in the Burton Avenue Rec Center Conference Room.

Members elect officials, run for office themselves, call special meetings, recall officers, and amend bylaws, if needs be.

This is a fairly radical move toward formality, but one that's due in deference to RPCC growth during the last two years. Club membership peaked at 53 members just before dues date, and 1988 figures will likely be greater. The Rohnert Park Chess Club is a model to other less structured local clubs. RPCC deploys a wide variety of promotional methods, levies reasonable but meaningful dues, sponsors classes, tournaments, and now the Kolty Room. This formula has obvious appeal if the recent growth (400% in 2 years) is any indication.

Contact RPCC or Redwood Empire Chess Association for details on establishing a club in your area or catalyzing growth of an existing dormant club.

RECA

REDWOOD EMPIRE CHESS ASSOCIATION

CHESS INFOLINE

707 795-9377

Our Purpose

CHESS MAKES YOU SMARTER

OPEN FILE subscribers are supporters of the Redwood Empire Chess Association, a nonprofit corporation founded to promote and develop chess as a significant educational tool and as a prominent aspect of culture in the Northern California Redwood Empire by various means including but not limited to publishing, discussion groups, forums, lectures, panels, and other educative forms. RECA cooperates with chess clubs, schools, groups, and other institutions in organization of chess classes, club formation, and conducting chess tournaments.

RECA obtains relevant editorials and objective scientific reports on research conducted worldwide indicating positive effects of chess studies on scholastic performance and socio-cultural decision-making attributes. RECA activities are based on the premise that developing keen analytical abilities increase the probability of making superior decisions in any context. Though it provides some advanced chess instruction, RECA holds that the viable future of society is integrally dependent upon the acuity of today's youth. In recognition of the scientifically demonstrable claim that study of chess imbues its students with enhanced analytical abilities, RECA is currently introducing chess classes in Redwood Empire school districts, the object being to implement chess in our regular daily education curriculum.

Member privileges include occasional discounts on RECA events, and reduced OPEN FILE advertising rates and publicity privileges. Clubs benefit from the OPEN FILE CLUB DEAL, offering inexpensive advertising and promotions for club news, schedules, activities and events.

Publishing Information

OPEN FILE is published in January, April, July, and October. Editorial offices are located at 200 Avram Avenue, Rohnert Park CA 94928

Excepting precopyrighted items, all contents © 1987 by OPEN FILE. Anyone may reproduce any portion of OPEN FILE bearing the byline of any editor or contributor listed on the OPEN FILE masthead for a not-for-profit educational usage in quantities not exceeding 50 copies. Rights to for-profit usages and usages in excess of 50 copies may be obtained by written arrangement with OPEN FILE; all other rights are reserved everywhere. Other than the aforementioned exceptions no portion of this publication may be reproduced, stored in retrieval systems, or transmitted in any form or by any means - electronic, mechanical, photocopy, or otherwise - without prior written permission.

Advertising & Submissions

All materials intended for publication, particularly time-critical advertisements for dated events, camera-ready Display Ads, and Cap Classifieds copy, must be received no later than the 20th day of December, March, June, or September to appear in OPEN FILE by the 15th day of the following month. OPEN FILE submissions should be legibly printed or typewritten. Address inquiries, comments, suggestions, or submissions, to: OPEN FILE, 200 Avram Avenue, Rohnert Park, CA 94928

A self-addressed envelope with sufficient return postage must accompany submissions if they are to be returned; no responsibility is assumed for unsolicited materials. Opinions expressed are strictly those of contributors and are not necessarily reflecting any view of RECA. OPEN FILE retains discretionary control over ad placements and publishing policies. OPEN FILE is never responsible for advertisers' claims or product quality. OPEN FILE admits any reasonable (our definition) advertisements, and doesn't require the content of its advertising to be chess-related material. **CHESS INFOLINE - 707 795-9377**

NAME _____ ZIP _____
 ADDRESS _____ STATE _____
 CITY _____ CURRENT RATING (if any) _____
 USCF ID# (if member) _____
 CHANGE OF ADDRESS
 RENEWAL MEMBERSHIP
 NEW MEMBERSHIP

OPEN FILE is an independent publication supported by private subsidy and advertising sales. OPEN FILE's subscription fees go directly into the general fund of the Redwood Empire Chess Association. RECA supports chess in many ways. If you do not indicate any preference, your contribution goes into RECA's general fund.

EDUCATION FUND - RECA chess instruction programs & seminars in schools and other suitable locations are already in progress. Improvements & expansion in this area are paramount among RECA goals

BUILDING FUND - RECA seeks to establish a dedicated chess headquarters with tournament/gaming areas, classroom, multimedia chess library, & office space

KOLTANOWSKI ROOM - (See our feature story) This voluminous exhibit may one day reside at RECA headquarters. We wish to help subsidize the displays, and secure a permanent site for the historically significant memorabilia of this "Living Treasure of Chess"

Check this box if you do not wish OPEN FILE to release your address information to direct mail merchandisers who purvey chess books and equipment.

INDIVIDUAL SUBSCRIPTION

Includes a year's subscription (four issues) to OPEN FILE, plus rate discounts for DISPLAY ADS and CAP CLASSIFIEDS (see schedule), plus occasional discounts at RECA's events and activities. \$ 5.00

RECA PATRON

All of the above, plus a THANK YOU in the EN PASSANT column for your generous contribution toward the promotion and development of chess as a significant educational tool and as a prominent aspect of culture in Northern California's Redwood Empire Area. \$ 25.00

OPEN FILE CLUB DEAL

Includes an INDIVIDUAL MEMBERSHIP (see above) for each CLUB DEAL member, plus listing privileges in the EVENTS & ACTIVITIES column in the CHESS ACTIVITIES section, plus news release publishing privileges in the CLUB SCENE column, plus roster listings (with current ratings, if you provide all info) in the PLACES TO PLAY column, plus tournament advertising and results listings in the TOURNAMENT UPDATE column; a quad value in local chess promotion. Why not build this charge into your chess club dues structure? CLUBS: BE SURE TO SUBMIT A SEPARATE COPY OF THIS COUPON FOR EACH MEMBER SUBSCRIBING THROUGH YOUR CLUB DEAL. EVEN IF YOU DO NOT HAVE TEN MEMBERS, THE \$40.00 CLUB DEAL MINIMUM FEE GETS YOU FOUR ISSUES OF VALUABLE PROMOTIONAL LISTING PRIVILEGES AT LOW RATES!

10-MEMBER MINIMUM CHARGE \$ 40.00
 + (\$4.00 X _____ EXTRA MEMBERS) = \$ _____
 SUBTOTAL \$ _____

If you do not wish to use this coupon a photocopy or facsimile will suffice.

If the address info is correct on the mailing label on the other side of this coupon, there is no need to fill in the lines. If it's incorrect, or if you're changing address, then please print legibly or type in the information requested. Check appropriate boxes and mail your subscription with check or money order to:



Ad Rates & Specs

DISPLAY AD SPECIFICATIONS

CAMERA READY ART
 SCREENS = 85 LPI MAX

ONE COLUMN WIDE
 2 3/8" BY 1" COLUMN DEPTH

	MEMBERS	NONMEMBERS
PER ISSUE	\$ 6.00	\$ 8.00
TWO-ISSUE RATE	5.00	7.00
FOUR-ISSUE RATE	4.50	6.00

ONE AND ONE-HALF COLUMNS WIDE
 3 5/8" BY 1" COLUMN DEPTH

	MEMBERS	NONMEMBERS
PER ISSUE	\$ 9.00	\$ 12.00
TWO-ISSUE RATE	7.50	10.50
FOUR-ISSUE RATE	6.75	9.00

TWO COLUMNS WIDE
 4 7/8" BY 1" COLUMN DEPTH

	MEMBERS	NONMEMBERS
PER ISSUE	\$ 12.00	\$ 16.00
TWO-ISSUE RATE	10.00	14.00
FOUR-ISSUE RATE	9.00	12.00

CAP CLASSIFIED RATES

COUNT ALL SPACES AND PUNCTUATION

REGULAR 28 CHARACTER LINE
 CONDENSED 34 CHARACTER LINE
 MICROCAPS 44 CHARACTER LINE
 PER LINE:

	MEMBERS	NONMEMBERS
REGULAR	\$ 1.00	\$ 1.35
CONDENSED	\$ 1.15	\$ 1.55
MICROCAPS	\$ 1.15	\$ 1.55



200 AVRAM AVENUE
 ROHNERT PARK, CALIFORNIA 94928

CHESS INFOLINE
707 795-9377

HELP THE YOUTH OF CHESS

KOLTY
 CHESS FOR YOUTH FOUNDATION, INC
 A NON PROFIT TAX-DEDUCTIBLE
 ORGANIZATION FOR NORTHERN
 CALIFORNIA YOUNGSTERS
 18 YEARS OR UNDER

- WE GIVE CHESS SETS & BOARDS TO SCHOOL CLUBS FREE
- WE HELP INDIVIDUALS TO ATTEND TOURNAMENTS
- WE SPONSOR SCHOOL TOURNAMENTS
- WE SPONSOR TEACHERS FOR PROMISING YOUNGSTERS

SEND YOUR TAX DEDUCTIBLE DONATIONS
 KOLTY CHESS FOR YOUTH
 FOUNDATION, INC
 P.O. BOX 2096 BURLINGAME CA 94010

FOR INFO CALL ALFRED HANSEN
 415 342-1137

SEASON'S GREETINGS



OPEN FILE Staff:

Editor: Keith Halonen

Contributors:

Paul Enright

Clement Falbo

George Koltanowski

Peter Manetti

Walt Randle

Will Rodgers



OPEN FILE

200 Avram Avenue

Rohnert Park, CA 94928



FINAL COMPLIMENTARY ISSUE! SUBSCRIBE NOW! USE CONVENIENT INSIDE BACK COVER COUPON TO ORDER. CLUBS SAVE 20% USING THE OPEN FILE CLUB DEAL!

HAYWARD CHESS CLUB
C/O KERRY LAWLESS
27917 PUEBLO SPRINGS
HAYWARD CA 94545-4517

Advertising

SEE INSIDE BACK COVER FOR ADVERTISING SPECS AND RATES

PERSONAL CHESS TUTORING

21 YRS EXPERIENCE - PERSONALIZED LESSONS TAILORED TO YOUR ACHIEVEMENT LEVEL. \$25 FOR A 2-HR LESSON AT YOUR TIME/LOCATION. STUDY WITH U.S. CHESS FEDERATION RATED EXPERT DON STEERS 707 528-9844

CHESS INSTRUCTION

BY PAUL ENRIGHT, USCF MASTER
CHESS ADVICE ON THREE LEVELS

- 1) \$ 5.00 - I WILL ANNOTATE YOUR TOURNAMENT GAMES WITH PRAGMATIC EMPHASIS ON SIMPLE OPENING THEORY, TACTICS, AND PSYCHOLOGICAL CONSIDERATIONS GAINED FROM EXPERIENCE IN OVER 500 TOURNAMENT GAMES.
- 2) \$10.00 PER HOUR - I WILL GIVE YOU PERSONAL LESSONS, ASSESS YOUR PRESENT LEVEL OF PLAY, SUGGEST THE MOST APPROPRIATE BOOKS TO READ, & SHOW YOU HOW TO APPROACH THE STUDY OF THE BEST CHESS BOOKS I'VE READ. ADVANCED PLAYERS (1800+) MAY BENEFIT FROM MY OWN DETAILED OPENING NOTEBOOKS. I'LL HELP YOU DEVELOP AN OPENING REPERTOIRE USING COMPLETE GAMES, SHED LIGHT ON TACTICS AND ENDGAMES, HELP YOU LEARN HOW TO CALCULATE QUICKLY & ACCURATELY.
- 3) \$ 20.00 - I WILL PLAY A TRAINING GAME FROM YOUR CHOSEN OPENING POSITION TO HELP YOU PREPARE FOR TOURNAMENT PLAY. 30/90 TIME CONTROL FOLLOWED BY 25/1, WITH A POST MORTEM ANALYSIS. MY EXPERIENCE AND LOVE OF CHESS CAN HELP TRANSFORM YOU INTO THE BEST TOURNAMENT PLAYER YOU CAN BE. CALL OR WRITE:
PAUL ENRIGHT 707 664-1730
7444 BRIDGIT DR ROHNERT PARK 94928

IT PAYS TO ADVERTISE

The codfish lays ten thousand eggs,
The homely hen lays one.
The codfish never cackles
To tell you what she's done.
And so we scorn the codfish,
While the humble hen we prize,
Which only goes to show you
That it pays to advertise.

Anonymous 19th-century

OPEN FILE CONTRIBUTORS WANTED

OPEN FILE SEEKS CONTRIBUTING WRITERS, ANALYSTS, CARTOONISTS, GUEST EDITORS; REDWOOD EMPIRE CHESS PLAYERS IN PARTICULAR. WHAT DO WE PAY? NOTHING! IT KEEPS COSTS DOWN. YOU GET: A) PUBLISHED, B) THE SATISFACTION OF COMMITTING AN UNDISPUTED LABOR OF LOVE. WE WILL RUN YOUR AD FOR ANY REASONABLE PRODUCT OR SERVICE, AND IT NEED NOT NECESSARILY BE RELATED TO CHESS. WRITE A LETTER TO THE EDITOR, LEAVE A NOTE IN THE "SUGGESTION BOX," OR SUBMIT A GUEST EDITORIAL. CREATE CARTOONS, REVIEW CHESS BOOKS OR MAGAZINES, OR SEND YOUR ANECDOTES DRAWN FROM PERSONAL EXPERIENCE. OPEN FILE IS ESPECIALLY EAGER FOR LOCAL CHESS HISTORY. SEE INDIVIDUAL COLUMNS TO GET A FEEL FOR OUR LITERARY STYLE. SEE INSIDE BACK COVER FOR AD SPECS
KEITH HALONEN EDITOR 707 795-9377

When you have a printing, publishing, or advertising project, who do you call? A printer? Typesetter? Graphic artist? Writer? Designer? Advertising agency? Call Media Matrix. We're all of the above, and more.



707/576-7764

Santa Rosa

Printing Express

1216 Mendocino Avenue • Santa Rosa, CA • (707) 545-1153

in support of the Sonoma County chess community, prints this newsletter at a generous discount. Now, with this coupon, readers of this newsletter can also benefit by receiving a

10% Discount

on their printing and volume copying needs

(Located next to Papa Ron's, across from Santa Rosa High School)