

PCA



PROFESSIONAL
C H E S S
ASSOCIATION

NEWSLETTER

PUBLISHED QUARTERLY

SUMMER 1978

VOLUME 1, NUMBER 2

How The PCA Was Born

by William Lombardy

In this country, various attempts were made to unite Chess Masters in a common cause. Dr. Emanuel Lasker (Champion of the World 1894-1921), dismayed with the paltry state in which masters found themselves, wrote a lengthy essay from which we quote: "The future belongs to the creative master and to an organization that works in unison with him." In the 1940's, Dr. Edward Lasker made an unsuccessful try at uniting the Masters. In 1958 at the Munich Olympiad, various Grandmasters met to discuss the idea of associating the world's top players. No further action took place since it was thought impossible to bring in the many Grandmasters from the Eastern European countries. An international association without the best players would have to be viewed as no association at all. At Reykjavik in 1972, Grandmasters Byrne, Evans, Kavalek and Lombardy met with Paul Marshall (Bobby's counsel) to discuss the formation of an American professional association. That too ended sadly in just talk. Masters trying to scratch out a living couldn't find the time to organize themselves with a purpose. Suddenly in the fall of 1978 the idea of a masters' association forced itself into the light of day once again. Larry Evans called Grandmaster Lombardy: "We must organize a professional

chess association!" The Masters had sat in the wings too long. Masters must have a voice in their own affairs. The PCA was born!

Grandmaster Evans undertook the bulk of the work! Singlehandedly, he set up the first PCA Newsletter, albeit "unofficial" and "controversial". Early in 1978, he took the bull by the horns and incorporated the PCA as a non-profit corporation under the laws of the State of Nevada. Meanwhile, in November of 1978 the PCA performed its first "unofficial" function: meeting with the USCF Policy Board at New Windsor to clearly outline the problems of the Masters and to make certain requests of the USCF (see the original PCA Newsletter) towards bettering the sorry condition of Master Chess. The PCA Committee of three at this historic meeting was John W. Collins, Larry Evans and William Lombardy. Progress had been made. The Masters could work with the USCF and disagree with their policies at the same time!

Informal Meeting of Master's Minds

Since the PCA was now incorporated, the next step was to be the First Annual Meeting and Election of Officers. The natural
continued on page 3



PCA NEWSLETTER

COVER LOGO: SHARON RUDAHL
INTERIOR LOGO: RAY ALEXIS
DIAGRAM MATERIALS: JOSEPH WAGNER, M.D.

PCA OFFICERS, PRESIDENT: NM JOHN PETERS, 7005½ WILLOUGHBY, LOS ANGELES CA 90038
FIRST VICE PRESIDENT: IGM LARRY EVANS, BOX 1182, RENO NV 89504
SECOND VICE PRESIDENT: IGM JAMES TARJAN, 1435 N. ALTA VISTA BLVD.#3, HOLLYWOOD CA 90046
THIRD VICE PRESIDENT: IGM ARTHUR BISGUIER, BOX 371, ROCK HILL NY 12775
SECRETARY-TREASURER: IGM WILLIAM LOMBARDY, 651 E. 14TH, #86, NEW YORK NY 10009
CO-EDITORS, NEWSLETTER: LOMBARDY & TARJAN
PRODUCTION & CIRCULATION: MAX BURKETT, 1009 MACARTHUR BLVD.#6, OAKLAND CA 94610

CORRESPONDENCE: MATERIALS FOR PUBLICATION CONCERNING CHESS ORGANIZATION SHOULD BE SENT TO MR. LOMBARDY. MEMBERSHIPS IN THE PCA AND RELATED COMMUNICATIONS SHOULD ALSO BE SENT TO MR. LOMBARDY IN HIS CAPACITY AS PCA SECRETARY-TREASURER. ADDRESS ALL OTHER CORRESPONDENCE TO EDITOR, PCA NEWSLETTER c/o MAX BURKETT.

THE PCA NEWSLETTER IS A QUARTERLY PUBLICATION OF THE PROFESSIONAL CHESS ASSOCIATION. THE PCA INTENDS TO INCREASE FREQUENCY OF PUBLICATION WHEN FUNDS PERMIT.
COPYRIGHT © BY THE PROFESSIONAL CHESS ASSOCIATION AND THE CONTRIBUTORS. PERMISSION IS GRANTED TO REPRODUCE SMALL EXCERPTS FOR REVIEW PURPOSES.

THE PCA IS A REGISTERED NON-PROFIT CORPORATION

PURPOSES : THROUGH EDUCATION, TO PROMOTE CHESS AS A REWARDING EXERCISE OF THE MIND; TO FOSTER RECOGNITION OF THE CHESSMASTER AS A GENUINE CREATIVE ARTIST WHOSE WORK SUBSTANTIALLY ENHANCES THE LIFE OF A CULTURAL PEOPLE; TO STIMULATE EXCELLENCE IN CHESS BOTH AS AN ART AND A COMPETITIVE SPORT; TO DEVELOP CONDITIONS IN WHICH THE CHESSMASTER MAY ACHIEVE LEGITIMATE COMPENSATION FOR THE ACHIEVEMENT OF EXCELLENCE IN CHESS.

VOTING MEMBERSHIP: ANY U.S. CHESSPLAYER WHO HAS EVER HELD A MASTER RATING (2200) IN THE USCF RATING SYSTEM AND ANY U.S. PLAYER WHO HOLDS A FIDE INTERNATIONAL TITLE FOR OVER-THE-BOARD PLAY (IGM, IM). VOTING MEMBERS ARE ELIGIBLE TO VOTE FOR OFFICERS AND ON ALL OTHER MATTERS AND TO RECEIVE THE PCA NEWSLETTER.

COST: \$20/YEAR (IT IS THE INTENTION OF THE OFFICERS TO ADD A \$20 INITIATION FEE FOR VOTING MEMBERS JOINING FOR THE FIRST TIME AFTER DEC. 31, 1978.)

ASSOCIATE MEMBERSHIP: ANYONE IN THE WORLD WHO SUPPORTS OUR GOALS AND WISHES TO RECEIVE THE PCA NEWSLETTER. THIS MEMBER IS NOT ENTITLED TO VOTE OR RUN FOR OFFICE.

COST: \$10/YEAR.

PAYMENT: SEND CHECK OR MONEY ORDER MADE OUT TO PCA
to: WILLIAM LOMBARDY
SECRETARY-TREASURER, PCA
651 E. 14th STREET #86
NEW YORK NY 10009

President's Message

I would like to express my opinion of our new organization. I don't view the PCA as a rival to the USCF. On the contrary, I want to work closely with them. Some of you feel that you have been mistreated by the USCF. Please set those feelings aside. We need the aid of the USCF network of local organizers and we need the support of their members. If we cooperate with them, they can help improve conditions for all masters. The fact that the USCF and ACF responded favorably to the PCA's request for more money in the 1978 US Championship proves my point.

What can you do? First, we need more members. This issue is being sent to masters and to others who are dedicated to chess. Join the PCA! With thousands of members, we can produce a truly excellent magazine. Second, write to the PCA officers and tell us how we can promote chess. Send

us your grievances too; we'll try to prevent mistakes from happening again. Finally, send games or news to our editors for publication. Someday we will pay for contributions (currently neither the editors, contributors or officers are paid) but now you only get our thanks.

Being a professional chessplayer requires more than a high rating. Very few of us can make a living solely by tournament play. A professional should be capable of writing interesting articles and giving seminars, lectures and private or group lessons. He should always make a good impression on non-players, because he represents master chess to them. And he should try to develop other skills, such as the ability to speak another language, which will convince organizers to invite him to their tournaments. I urge you all to act as professionals. We can make the PCA flourish.

*How the PCA was born by William Lombardy
continued from first page*

(The for this was Lone Pine, California during the Louis B. Statham Masters Plus Tournament.

The decision was made to hold an informal meeting before the official Annual Meeting. This informal meeting was to provide the masters and any interested observers present an opportunity of airing their views and discovering (perhaps for the first time!) the valuable opinions of others. Then, the Masters and other Chessplayers could make a more informed decision as to the merits of joining the PCA.

Fred Townsend, Vice-President of the Federation, represented the USCF Policy Board. Grandmaster Lombardy tried to clear the air stating that the impetus for the formation of the PCA was not the alleged vendetta of Larry Evans for the USCF or the editor of CL&R. It was pointed out that Grandmaster Evans was fired after the PCA was formed. Jerome Hanken stated for the record that it was Hochburg's position that Evans had resigned. Lombardy pointed out that no correspondence exists affirming that position. Kim Commons suggested that a grievance committee could be established to consider such arguments but

that the purpose of the meeting was to establish PCA for all masters. Everyone agreed.

Arthur Bisguier then read a letter from Jeffrey Kastner, Chairman of the USCF Masters' Affairs Committee, whose letter might possibly reflect the views of absent masters. J.K. endorsed the concept of the PCA if it were truly to represent all masters. He suggested that a meeting at Lone Pine had the disadvantage of allowing for the participation of masters 2350 or above since only that category of master could compete at Lone Pine. He suggested that "mail ballot" might solve the problem. (Whatever the solution to this problem, it was suggested that the PCA had not been officially formed, that there was insufficient organization to set up such balloting, and that the PCA had to start somewhere. It has been suggested that a mail ballot with its concomitant expense may not be necessary, if the PCA is able to organize an annual Masters' Open at which (very likely the majority of American Masters would be present.) J.K. indicated that he hopes to resign his chairmanship, with the PCA representing Masters.

Various Views

Evans and Browne: bureaucrats should not be responsible for selecting the players for the US Championship, the Olympiad Team or masters' events. Tarjan: There is a need for a masters organization; masters never will be adequately represented by the USCF with which we can, however, work; no one else but the masters as a group is going to solve the masters' problems; somehow the PCA must serve all levels of masters; the USCF organ represents all chess-players and is the only strong chess organization; we must work together to solve problems of mutual concern. Evans: the USCF Policy Board promised to advertise new positions of employment with a view to providing masters with the opportunity for applying for the posts--the promise was broken and a newly created editorship was given one Roger Cox who played in his first tournament last year and wrote about it in CL&R; there's a conspiracy against the masters in the USCF organization. Townsend: The problem will be discussed at the next PB meeting; not all the PB members were aware of the creation of this new position. Evans then asked if this were not a glaring weakness in the PB and USCF organization. Browne, Tarjan, Evans, Lombardy and Shamkovich: set up a newsletter with quality chess and masters' news and views. Richard Fauber: PCA is a pressure group for masters; non-master journalists did have their own organization. Lindsay Philips: (speaking for non-master observers) doesn't want to vote on "how you run your business." Bisguier: (re: mail ballot) heavy vote will be in the hands of the lower-rated masters since this will be the bulk of the membership; "this bothers me a bit since this is a professional organization." Commons suggested that a solution could be found in setting up committees for the various areas of concern. Lombardy: try to encourage all masters to ply their art; there must be no partialism; our main goal is fund raising from the corporate community. Jack Peters: 2 years ago was member of USCF Masters Affairs Committee on which no one eligible for the US Championship was a member. Proposals were made favoring the lesser masters (who would not qualify by their rating). Paul

Whitehead: selection for the US Championship--highest rated players. Tarjan: different rating equals different concerns; all masters should be able to appreciate that; PCA should set up a fair structure. Lombardy: general principle--everyone must have a vote. Tarjan: PCA, an organization that respects quality. Kevin O'Connell: By Laws should set up committees with membership coinciding with the purposes of the committees and interests of the masters directly concerned. Michael Rohde: highest-rated for the US Championship; primary purpose at Lone Pine to establish some kind of entity (the PCA); we must get started first. Kim Commons: set up mechanism to get invitations for strong untitled players and raise money for sponsorship; every member must be a fund raiser. Bisguier and Goichberg have been coordinating foreign tournament invitations for the USCF. Ken Rogoff: the problem is not how money has been distributed in the past but rather how to raise money. Paul Whitehead: He and his brother Jay received no help from the USCF even though his brother was going to compete in the World Championship for Cadets (under 17); the Piatigorsky Foundation finally did provide some help; the American Chess Foundation is more willing to back east coast players (It was pointed out the ACF wasn't necessarily backing any players.) Tarjan: only GM's eligible for the ACF 50% matching funds program. Evans and Lombardy: wrote to ACF Executive Director Allen Kaufman but at meeting time received no reply; the question was providing funds for masters in generals; a request for seed money (subsequently turned down!) was also made; no comment from ACF on suggestion that ACF hire a professional master consultant to aid in ACF decisions on masters' affairs. Ron Henley: all masters should seek individual sponsors. Dennis Fritzing: need for professional fund raisers. Commons: tournament clearing house. Bisguier: geographical problem regarding international invitations; we need to reciprocate with invitations for players of other countries. Lombardy: top masters can make condition for acceptance of an invitation that an American Master accompany the top master, especially in cases where the organizers pay neither fee nor

travelling expenses. Tarjan: GM's deserve a fee for playing. Browne: qualifying tournaments held for those competing for invitations. Lindsay Philips raised these questions: Does the PCA intend to compete or cooperate with the USCF? How will the PCA handle FIDE? Will the PCA apply for FIDE membership? All agreed that mutual cooperation should be the cornerstone for building Chess. It was suggested that class tourneys be held for the different categories of masters. The informal meeting was adjourned at 2:45 PM.

The Minutes Of The First Annual Meeting Of The PCA

After a brief adjournment (approximately 30 minutes) and the collection of membership dues, the Chairman, Grandmaster William Lombardy, called to order the First Annual Meeting of the Professional Chess Association.

(Fred Townsend: "The open 90-minute dialog (at the informal meeting) closed any potential rifts, drew the attendees together and constructed a consensus of opinion on PCA objectives.")

Members Present: Grandmasters: Pal Benko, Walter Browne, Arthur Bisguier, Larry Christiansen, Larry Evans, Anatoly Lein, William Lombardy, Leonid Shamkovich and James Tarjan
International Masters: Kim Commons, Michael Rohde, Anthony Saidy (who became an Associate Member since he has retired from active competition), Ken Rogoff, and Norman Weinstein; National Masters (including anyone who has ever held a master rating on the USCF rating list): Alan Benson, Max Burkett, Curt Brasket, Curtis Carlson, Robert Gruczacz, John Donaldson, Ron Henley, John Fedorowicz, John Peters, Jerry Hanken, Steven Odendahl, Richard Fauber, Edgar McCormick, Julius Loftsson, Timothy Taylor, Paul Whitehead, Vitaly Saltzman, Walter Morris, Perry Youngworth, Dennis Fritzingler and Diane Saveriede. Arthur W. Dake, who felt indisposed before the start of the tournament, joined the PCA but could not attend the meeting. Lindsay Philips (as an impartial party) was declared teller.

Lombardy opened the meeting at about 3:15 PM, April 8th 1978. Long debate centered on the proposed By-Laws which Larry Evans had modeled on similar documents of the Profes-

sional Golf and Tennis Associations. For those who possess a copy of the original By-Laws, changes were duly voted upon and made in the following areas: the Title -- from By-Laws to CONSTITUTION; Article II: c,g,i,j,k,o,q and anywhere where the words "Chess Professional" or "Chess journalists" appear; r and s were added. Article III, 1 & 2; Article IV, 1 & 2; Article V, Section 2, 3, 5 (added).

Some particularly valuable comments during the "Constitutional Convention". Bisguier: We are only a small group and most of us are the militant ones. We want to attract all US Masters as members. Benko: If the 300 US Masters join us we become strong. We don't get strong if we become too militant. We don't want to fight the USCF. Tarjan: We must define the word "Professional". (This will be duly accomplished in the By-Laws.) (The Secretary has the tapes on file, the full record of the discussions at the meeting.)

The Constitution which follows is duly incorporated into the minutes of the PCA. We have legal counsel working on the proper papers to be submitted to the State of Nevada in order to conform to the Laws of that Sovereign State.

Kevin O'Connell of England graciously served as teller for the elections. Lombardy relinquished the chair while Mr. O'Connell moderated the elections. ELECTION OF OFFICERS: Nominations for PCA President were entertained. Jack Peters was duly nominated but immediately withdrew. James Tarjan, William Lombardy and Larry Evans were also nominated. Tarjan and Lombardy in turn declined the nomination seemingly leaving the field clear for Evans. At this point, Jack Peters reentered the race. In the runoff, Peters won 16-14. The Presidential term expires at the 1980 Annual Meeting.

Secretary-Treasurer: William Lombardy was duly nominated and was unopposed. He was voted to the post by acclamation.

First, Second, and Third Vice-Presidents: Six members were duly nominated; the top three vote-getters were elected to the aforementioned posts. Larry Evans (26), James Tarjan (21), Arthur Bisguier (14), Kim Commons (13), Walter Browne (9), Jerome Hanen (3). The Vice-Presidents were elected for a one-year term, expiration at the 1979 Annual Meeting. Future VP's will be elected to a term of two years, except in the case of

serving out a vacated post.

A record of the straw vote taken follows. Mr. Townsend congratulated the membership on a constructive meeting and anticipated a healthy cooperation between the USCF and the PCA.

The Meeting was adjourned at 7:30 PM!

A straw vote (not binding on the PCA board) was taken on the following motions, all of which were passed by the membership:

1. That a permanent committee be established to decide all matters pertaining to the organization of all master events including the U.S. Championship, national and international master teams. That this committee shall consist of 3 PCA members designated by the PCA and 3 members appointed by the USCF.
2. That a finance committee be established to explore practical methods of raising funds.
3. That the USCF be approached to assess one dollar per player per USCF rated event to be forwarded to the PCA for the promotion of master chess and the creation of educational programs.
4. That a committee be established to explore with the cooperation of the USCF a central booking and exhibition bureau.
5. That priority be given to the establishment of an annual Masters' Open and a Master Tour.
6. That a committee be established to examine the rules of chess and recommend innovations for chess events in order to increase spectator appeal and public support.
7. That a committee be established to design an educational program in which the talents of masters may be advantageously employed.

8. That the PCA go on record as deploring the USCF policy of ignoring masters as candidates for USCF administrative and editorial positions and for not advertising these posts so that qualified American masters and writers may apply. And further, that as contributors to Chess Life & Review, American chess writers should be given preference. That no CL&R contributor should write more than one regular column.

9. That the USCF confer Life Voting Membership on all FIDE titleholders

10. That the US Team Championship, which limits the composite ratings of teams, be called the US Amateur Team Championship, since a master team is not permitted to play.

11. That a finder's fee be established for those who work to raise funds for the PCA.

12. That a Clearing House for International Tournament Invitations be established. (Kim Commons was proposed to chair this committee.)

The PCA Board at present has these proposals under consideration. The formal proposal by James Tarjan for a newsletter was approved. The Newsletter is planning to carry news and views of Master Chess, a high quality theoretical article, an emphasis on American Master Chess, some important foreign games (games carried will in most cases be unannotated; others will be lightly annotated.) The emphasis is on quality of the highest level. Hopefully, the newsletter will spotlight American Master Chess. Associate members would receive official PCA publications. All chessplayers are encouraged, urged to join the PCA.

This Report is respectfully submitted by International Grandmaster William Lombardy, Secretary-Treasurer.

PCA CONSTITUTION

ARTICLE I

NAME AND PRINCIPAL OFFICE

SECTION 1. Name. The organization shall be known as the Professional Chess Association (herein referred to as the PCA).

SECTION 2. Principal Office. The principal office of the PCA shall be located at such place as the officers of the PCA may from time to time designate.

ARTICLE II

PURPOSES AND OBJECTIVES

SECTION I. Purposes. The purposes of the PCA shall be:

- (a) To unite all United States Master Chess Professionals in a single association for the purpose of maintaining a representative and unified organization to consider, agree, and act upon all matters affecting the activities of its members.

- (b) To promote and protect the mutual interests of all United States Master Chess Professionals.
- (c) To promulgate just and reasonable rules and regulations to govern the sport of Chess in the USA.
- (d) To strive for the improvement of playing and working conditions generally, to regulate and correct abuses relative thereto.
- (e) To encourage the maintenance of minimum levels and continued growth of prize money, and to insure the just and equitable distribution thereof.
- (f) To raise and administer funds for the promotion of United States Master Chess.
- (g) To assist in the negotiation of professional standards for United States Master Chess Professionals and United States Master Chess Journalists.
- (h) To furnish reliable information to its members with respect to matters of mutual concern.
- (i) To develop group insurance and pension plans.
- (j) To establish jurisdiction over United States Master Chess events.
- (k) To lend assistance and guidance in the selection of players and teams for international Chess events.
- (l) To formulate and maintain ethical standards to govern the conduct of its members in their relations with each other and the public.
- (m) To develop programs through which the PCA and its members will derive further benefits and/or revenues.
- (n) To assist its members in securing employment.
- (o) To establish and maintain training programs and workshops.
- (p) To develop Chess talent and encourage excellence.
- (q) To publish and distribute bulletins of major master events.
- (r) To establish and maintain a clearing house for the purpose of securing invitations for United States Chess Masters in international events.
- (s) To foster the establishment of quality United States international master events.

ARTICLE III

MEMBERSHIP

SECTION 1. Members. There shall be two classes of membership: Voting and non-voting.

- (a) Any United States Chessplayer is eligible for membership who has ever held a master rating (2200 or higher on the Elo Rating Scale) or who holds a FIDE (International Chess Federation) Title. This member is eligible to vote upon payment of annual dues.
- (b) Anyone supportive of the goals of the PCA who wishes to receive official PCA publications, upon payment of the annual dues, becomes an Associate Member. This member is not entitled to run for office or vote.

ARTICLE IV

OFFICERS

SECTION 1. Election of officers and term. Five officers shall be elected for a term of two years until their successors are elected. Charter Vice-Presidents are elected for a one-year; subsequently, Vice-Presidents are elected for two years. The officers of the PCA shall consist of a President, First Vice-President, Second Vice-President, Third Vice-President, and Secretary-Treasurer.

SECTION 2. The property, affairs, activities and business of the PCA shall be managed and controlled by these five elected officers.

ARTICLE V MEETINGS

- SECTION 1. Annual Meeting. The President shall call an Annual Meeting for the purpose of electing officers and transacting any other business that may arise.
- SECTION 2. The Quorum for the Annual Meeting shall consist of those members present in person.
Voting may proceed by those members present at the Annual Meeting (and by mail ballot for those voting members unable in person to attend the Annual Meeting), subject to the By-Laws which may not contradict this Constitution.
- SECTION 3. The rules contained in Robert's Rules of Order (revised shall govern the meetings of the PCA in all cases to which they are applicable.
- SECTION 4. This Constitution may be amended at any Annual Meeting by a two-thirds (2/3) vote of the members, according to the provisions of ARTICLE V, SECTION 2.
- SECTION 5. Election of Officers is to be by closed ballot of those members representing the Quorum at the Annual Meeting, subject to the provisions of ARTICLE V, SECTION 2.

The Newstand

by William Lombardy

In a match sponsored by the VOLVO CORPORATION of Washington, D.C., US Grandmaster Lubomir (Lubosh) Kavalek walloped Ulf Andersson of Sweden 6½-3½! The purse? \$5,000! Games 1-6 and 8 were drawn; Kavalek won 7, 9 and 10. Andersson was a guest at Kavalek's home during the match. Friendly enemies! The games were contested in the VOLVO Showrooms in Washington. Corporate sponsorship anyone?

Bad News: The American Chess Foundation has rejected the PCA request for seed money. There is word that some members of the ACF board consider the PCA a union and themselves the employers of masters. For the record: the PCA is not a union, although struggling for the rights of masters will necessarily be part of PCA activities. The ACF pays neither salaries nor pensions to masters; the ACF does provide grants for Chess-promotional activities. Hence, the ACF is not an employer of masters. An adversary relationship between the PCA and the ACF should not exist. Both are in the difficult "business" of promoting Chess!

Good(?) News: The ACF has offered the USCF a matching grant of \$40,000. Conditions: That the USCF dissolve its Charitable trust (containing \$40,000); that the funds will be earmarked for USCF activities and spent according to USCF instructions; that the funds cannot be spent in a manner contrary to the ACF Charter; the offer is nullified if the IRS rules unfavorably against the USCF Charitable Trust. The USCF

Policy Board declined to make a ruling until it consults the delegates at the August USCF Business Meetings.

Battle Won?: The USCF and Larry Evans have reached agreement on the restoration of the Grandmaster's popular columns.

US CHAMPIONSHIP: The invitees to this year's tourney indicated that they would turn down their invitations if the USCF did not increase the meager prize fund of \$15,000 for 16 players. The request was for \$10,000 more for appearance fees. The combined efforts of the ACF (\$5,000) and the USCF (\$5,000 matching funds) assured a \$25,000 prize fund and the strongest tournament ever, even without Fischer: Bobby, please come out and play!

USCF Vice-President Fred Townsend recommends that USCF Policy Board aid PCA! In condensed form, Townsend's memo to the PB recommends free ads to the PCA in CL&R and in the USCF Rating Supplements, free stuffings in first-class mailings, bi-monthly free mailing labels for use in mailings to USCF Masters and concrete USCF coordination with the PCA on a Tournament Clearing House for foreign invitations. Mr. Townsend withholds comments on a PCA Tour until the latter makes concrete presentations in this area. Very helpful. There is, however, no word yet as to the PB's decisions on those recommendations.

MEMBERS AND OTHER INTERESTED PARTIES:
Please send us your news and views!

Proposal For PCA Annual World Chess Sweepstake

by Larry Evans

Entry Fee: \$10,000. Open to any player in the world.

Prizes: Five. Amounting to the sum of the entries. 50% for first, 20% for second, 15% for third, 10% for fourth, 5% for fifth. Similar to the division of the Poker World Holdem Championship held annually in Las Vegas, as seen on TV.

Time Limit: Total elapsed time of 3 hours per game--each side has 90 minutes for the whole game. Fast. No adjournments.

Rounds: Two per day. Six rounds in 3 days.

Site: Major hotel in Reno or Las Vegas? All participants get free rooms but must pay food and travel expenses.

TV rights: To be negotiated by the PCA for sale to a major network. Also possible sales to world market, especially those nations with players competing. Proceeds to the PCA.

Precedent: The Poker World Holdem Championship in Las Vegas draws approximately 50 entrants annually and features a first prize

of around \$250,000. With that kind of money riding on chess, interest could easily rival that of the Fischer-Spassky match in 1972. A commentator analyzes key games in progress and reviews highlights of previous day's play.

Backing: Each player must raise his own \$10,000. In some cases the national chess federation may subsidize their grandmasters. A player may sell a piece of himself. Sweepstakes. If one backer puts up \$10,000 he is entitled to a return of his \$10,000 plus 50% of the prize won. A player may sell small portions of himself: 5% for \$1,000, etc.

Popularity: Chess is much more popular worldwide than poker and most other sports. It is a universal language. The tension of the clock combined with the lure of big money should attract a large international audience.

Comments invited on this or other chess ideas.

Games

Benoni Innovation

by James Tarjan

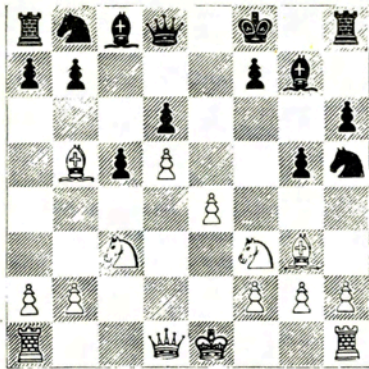
A few years ago a new move was introduced for White in the Modern Benoni. 12. e5! It is unlikely that this innovation will eliminate this type of Benoni from the modern repertoire of openings but it has definitely given Benoni players headaches.

J. Tarjan - Tim Brown
Del Webb Phoenix Open, June 1977
Benoni Defense

1. d4 Nf6 2. c4 c5 3. d5 e6 4. Nc3 ed 5. cd d6 6. e4 g6 7. Nf3 Bg7 Since the discovery of 12. e5, some players chose instead 7... a6. Then on 8. a4 Black can proceed with 8...Bg7 and 9. Bg5 h6 10. Bh4 g5 11. Bg3 Nh5 is satisfactory for Black because the possibility of Bb5+ has been eliminated. 7...a6 8. Bg5 h6 9. Bh4 g5 10. Bg3 Nh5 11. e5 is untested. 11...Ng3 12. fg de or 11... Bg7 looks good for Black. On 7...a6 8. a4

Bg7 White can revert to standard lines by 9. Be2 with the advantage that Black has less flexibility, i.e. lines with ...Na6 or ...Ba6 are no longer possible. Tarjan-Rohde Lone Pine 1978 went 7...a6 8. a4 Bg7 9. Nd2 Nbd7 (9...0-0!?) 10. Nc4 (or 10. Be2) Nb6 11. Ne3. This position was reached by transposition in the famous game Nimzovitch-Marshall with the single difference that the moves ...a6 and a4 were omitted. Nimzovitch-Marshall continued (without 7...a6 and a4) 10... 0-0 11. Bd3 Nh5 12. 0-0 Be5 13. a4 Nf4 14. a5 Nd7 15. Nc4 with advantage to White. Tarjan-Rohde went 11...Bd7 12. Bd3 0-0 13. 0-0 Re8 14. a5 (14. Re1!) Nc8 15. Nc4 Bb5 16. Re1 Nd7 17. Qc2 Qh4 18. Be3 and Black blundered with 18...Ne5? 19. Nb5 Nd3 20. Nc7 Ne1 21. Re1 instead of playing 18...Bc4 19. Bc4 Ne5 20. Be2. 8. Bg5 h6 On 8...0-0 9. Nd2! Re8 10. Be2

a6 11. a4 Nbd7 12. 0-0 White achieves a set-up known to be good for many years already. Nevertheless Ljubojevic, a player unwilling to accept the generally accepted, took the Black side against Kavalek in the Manila Interzonal 1976. After 12...Rb8 13. Bh4 Qc7 14. h3 c4 (impatient with the limitations of his position) 15. Bc4 Nc5 16. Re1, Kavalek went on to score an important victory. 9. Bh4 g5 9...a6!?' is "!" according to Minic (Informant 23) and "?" according to Kaplan (Informant 10). After 10. Nd2 (10. a4 g5 11. Bg3 Nh5) b5 White has succeeded in establishing his optimum piece formation but Black in turn has succeeded in playing ...b5. Spassov-Hulak, Athens 1976 continued 11. Be2 0-0 12. 0-0 Re8 (12...g5? is a senseless weakening that would transpose to Najdorf-Fischer, Piatigorsky Cup 1966, won by Najdorf) 13. f4 ("?" according to Minic. 13. Qc2 suggests itself with one plan being, 14. Rael, 15. a4 and if ...b4 then Nd1-e3-c4. Minic gives the line 13. Qc2 Nbd7 14. Bg3.) Nbd7 14. Qc2 Qc7 15. Rael Nb6 16. Kh1 Bd7 17. Bf3 b4 18. Ne2 Rac8 19. b3 c4 and Black went on to win. This one game does not represent proof of the correctness of Black's plan, as White's play can clearly be improved upon. Only future games will tell. 10. Bg3 Nh5 11. Bb5+ Kf8 Forced. If 11...Nd7 12. Bd6 or 11...Bd7 12. Bd7 Qd7 13. Ne5 with a large advantage.



Formerly 12. Be2 was played here, anticipating answering ...a6 with a4. After 12...Ng3 13. hg an interesting struggle occurs which has been contested many times in master play. Black has generally obtained good chances. Black's unopposed KB is a good point in his position. On the other hand

Black's King may prove to be awkwardly placed and his kingside white squares may prove weak later on. Bobotsov-Kaplan, Siegen Olympiad 1970, is an example of snappy play by the Californian, albeit opposing suicidal play by the Bulgarian Grandmaster: 13...Nd7 14. Nd2 Qe7 15. g4? (15. Qc2 a6 16. a4 Bd4 17. Rf1 Nf6, Brasket-Tarjan, Lone Pine 1972, or 17...Kg7 18. 0-0-0 b5 Mecking-Keene, Hastings 1966-7) a6 16. a4 Bd4 17. 0-0?? Nf6 18. Nc4 h5 19. gh (19. Nb6 hg! 20. g3 Ne4! 21. Nc8 Qe5! 22. Kg2 Rh2+! 23. Kh2 Qh8+ 24. Kgl Ng3 25. Bf3 Nf1 26. Qf1 gf 27. Nd6 Qh4 winning--Kaplan) 19...g4 20. Ne3 Nh5 21. Bg4 Qh4 22. g3 Ng3 23. Kg2 Nf1 24. Kf1 Bc3 0-1. 12. e5! As far as I know this move was first played in a game Keene-Timman from an Anglo-Dutch match of about 1975. White sacrifices a pawn to take advantage of Black's lack of development and weak kingside white squares and to expose Black's king. 12...Ng3 Black has tried various moves: 12...g4?! and Hartston recommends 13. Bh4!; 12...a6 13. Bd3 (13.Be2!?) de 14. Be5 g4 15. Bg7+ Kg7 with an unclear position was played in the Keene-Timman game. 13. fg A major point to 12. e5. The f-file is opened and the game develops a character related to a King's Gambit. 13...g4?! At best this move forces White's knight to a good square at h4 and, in addition, as we will see, the knight is not necessarily forced to move. 13...de seems the best try at this point. Black is terribly behind in development and his king is on a half-open file. Still, if the Polugaevsky Variation of the Najdorf Sicilian is playable, maybe this line is too. Stean-Nunn, Birmingham 1976 continued 13...de 14. 0-0 a6 (14...f5!? or 14...Kg8!?) 15. Be2 (Why not 15. Bd3?) Ra7 (15...b5!?) 16. a4 b6 17. Qb3 f5 18. Nd2 ("?!" Stean. He recommends 18.Rad1) e4! 19. g4 (19. Nde4 Bd4+ 20. Kh1 Kg7 Stean) 19...Bd4+ 20. Kh1 e3 21. Nc4 f4 22. Nb6 Rb7 23. a5 h5! 24. gh Nd7 25. Ba6 Nf6? (25...Rh5! with the idea 26. Bb7 Kg7 27. Bc8 Qh8 winning. Better is 26. g4!, Stean) 26. Bb7 Nh5 27. Ne2 Bg4 28. Nd4 Ng3+ 29. Kgl Rh2 30. Kh2 Qe8 (30...Qf6 31. Qe3 Qh6+ 32. Kgl Qh1+ 33. Kf2 Qh4 34. Kel! Ne4+ 35. g3!, Stean) 31. Ne6+! (31. Kgl? cd-) Be6 32. Qe3 Qh5+ 33. Kgl 1-0. 33...Qh1+ 34. Kf2 fe+ 35. Kg3+ or 33...Ne2+ 34. Qe2. Matera-Rohde, New York GHI International 1977 followed the above game until move fifteen when White played the more logical 15. Bd3. But

after 15...Kg8, instead of 16. Nd2, Matera went crazy with 16. Ne5 and lost. 14.0-0!?

The simple 14. Nh4 is not bad, but for someone who studied the King's Gambit at an early age Muzioization was irresistible.

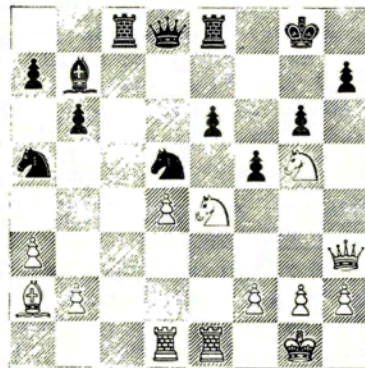
14...a6 15. Bd3 gf 16. Qf3 Qe8 On 16...Qe7 I intended 17. ed Qd7 18. Rael. 17. Bg6 17. e6 is another possibility but the text is good. 17...Nd7 18. e6 Ne5 19. Qh5 Ng6 20. Qg6 Black will soon be a rook ahead, but his pieces are placed very badly. 20...f6 Apparently the best defense is 20...Bd4+ 21. Kh1 f6 22. Rf6+ Bf6 23. Qf6+ Kg8 24. Ne4 Rh7 (24...Be6 25. de Qf8 26. Qg6+ Qg7 27. Nf6+ Kf8 28. e7+ Qe7 29. Rf1) 25. Rf1 Be6 26. de Qf8 27. Qg6+ Qg7 28. Nf6+ Kh8 but after 29. Qh7+ Qh7 30. Nh7 Kh7 31. Rf7+ it is unlikely Black can salvage a draw. 21. Rf6+ Bf6 22. Qf6+ Kg8 23. Ne4 A strange position. White's knight and rook are brought to the attack. 23...Rh7 24. Rf1 b5 Now if 24...Be6 25. de Qf8 26. Qc3 Qg7 27. Nf6+ Kh8 and if nothing else 28. Nh7 Qc3 29. bc Kh7 30. Rf7+. 25. Rf4 Be6 26. de Qh5 27. h3 Building a perfect house for the White king and preparing Rg4+. 27...Rg7 28. e7 resigns. There is no move.

Tarjan (Berkeley) - M. Diesen (Washington)
Telephone Match Finals

1. c4 e6 2. Nc3 c5 3. Nf3 Nf6 4. e3 d5 5. d4 cd 5...Nc6 establishes a well known position. The text combined with Black's next move is an interesting alternative. 6. ed Bb4 7. cd 7. Bd3 dc 8. Bc4 0-0 9. 0-0 b6 is a Nimzo-Indian. There is also the possibility 7. Bd3 dc Bc4 Qc7 as in Morris-Commons, Lone Pine 1978. 7...Nd5 7...ed 8. Bd3 0-0 9. 0-0 Bg4 10. Qb3 Bc3 11. bc Bf3 12. gf Qc7 with a double-edged position; Frey-Tarjan Quito 1976. 8. Bd2 An important alternative is 8. Qc2. One continuation is 8. Qc2 Nc6 9. Bd3 Nc3 10. bc Nd4 11. Nd4 Qd4 12. 0-0! with a strong attack. 8...Nc6 9. Bd3 Nf6 The position becomes equivalent to a Semi-Tar-rasch. Other possibilities are 9...0-0 10. 0-0 Be7 with the idea 11...Bf6; or 10...b6. 10. Bg5 Be7 11. 0-0 I also considered 11. Qe2!? 0-0 (11...Nd4 12. Nd4 Qd4 13. Bb5+ with an attack.) 12. Rdl but decided that this formation of Q and QR was no improvement over the game setup. White may end up playing Bbl and Qd3 anyway. 11...0-0 12. a3 b6 13. Rel If White plays immediately 13.

Bc2, Ba6!? is an idea. 13...Bb7 14. Bc2 g6 There is no reason to anticipate White's next move. 14...Rc8 or 14...Re8 could just as well be played. Now White could choose another square for his queen: 15. Qd2!? aiming at the weakened kingside dark squares. But I decided that d3 is not a bad square for the queen either. 15. Qd3 Rc8 16. Rad1 Re8 The exact same position was reached in the game Tarjan-Browne, 1977 US Championship, by a completely different sequence of moves. There I played 17. Ba4 a6 18. Bf6 Bf6 19. d5. Eventually I won but naturally Black had several possible improvements. This time I tried: 17. Bb3 Na5 18. Ba2 Nd5 19. Ne4!?

With the idea of a remarkable piece sacrifice. Nonetheless it's likely that the objectively strongest continuation would be 19. Be7 Re7 20. Ne4 or 19...Ne7 20. Ne5 19...Bg5 Black prepares to accept the piece. 19...f5 20. Be7 fe 21. Bd8 ed 22. Bg5 Rc2 is an alternative. On 23. Bc1? Rec8 24. Bbl Ba6 Black has good chances. Therefore White would play 23. Rd3 Rb2 24. Bd5 Bd5. 20. Nfg5 f5 Black cannot resist the bait. He would be well advised, especially considering the rapid time limit of the telephone matches (40 moves in one hour), to continue solidly with 20...h6 21. Nf3 Nf6. 21. Qh3 Black has three feasible replays, each of which leads to extremely different play.



21...h5 (a) 21...Rc7 22. b4 fe (22...Nc6 23. Bd5 and 24. Nf6+) 23. Ne6 is strong since 23. Bc8 is answered by 24. Bd5 Qd5 25. Nc7. (b) 21...Qe7 (According to my analysis this is Black's best defence.) 22. Nd6! Qg5 23. Ne8 Re8 (If 23...Nf4 24. Qg3) 24. b4 Nc3! (better than 24...Nf4 25. Qg3) 25. f4! Qg2+ 26. Qg2 Bg2 27. Rd3 Na2 28. Kg2 Nc4 29. Ral Nb4 30. ab and I judge White a shade better. An al-

ternative, apparently inferior, to this line at move 27: 27. Kg2 Nd1 28. Rd1 Nb7! (28... Nc6 29. d5 Nd8 30. de Ne6 31. Rd6. In this line 29...Rd8 is impossible because of 30. dc!) 29. d5 Rd8 30. de Kf8! 31. Rd7 Rd7 32. ed Ke7 33. Bg8 h6 and 34. Bh7 is impossible because of Kf7. 22. Qg3 fe 23. Ne4 Kg7 23... Kh7 is not better. 24. Ng5+ or 24. Bb1!? 24. Nd6 24. Bb1 as suggested by Christiansen after the game, is a thought here as well. But it seems Black has the defence 24...h4 25. Qg4 (or 25. Qe5+) Nf6. With the text White obtains rook and pawn for bishop and knight, and has the advantage based on his continuing initiative. Especially dangerous for Black is White's intention to bring a rook or two to the seventh rank. 24...Rf8 25. Nc8 Qc8 Both players were already very short of time and this shows in the next few moves. 25... Bc8 offers more hope. 26. b4? 26. Rcl is much better. 26...Nc6? After the text Black is lost. But on 26...Nc4! he is very much in the game. 27. Bd5 ed 28. b5 Nd8 28...Na5 is neither better nor worse. White's penetration of the seventh rank will prove decisive. 29. Re7+ Nf7 29...Rf7 30. Qe5+ is more stubborn. Black's bishop is dead wood and it does not take much calculation to realize Black is lost. 30. Rc7 Qb8 31. Recl Re8 32. Qf4 I saw 32. Rf7+ Kf7 33. Rc7+ Qc7 34. Qc7+ Re7 which is of course winning but decided to look for something better, overlooking White's next move. However no damage is done. There are various ways to win but not 32. Qf3?? Qc7. 32...Re7 33. h4! And here not 33. g3?? g5. 33...a6 34. g3. Black lost on time. He is at the end of his rope anyway.

J. Peters - W. Browne, Lone Pine 1978

Sicilian Defence

1. e4 c5 2. Nf3 d6 3. Bb5+ Bd7 4. Bd7+ Qd7 5. c4 Nc6 6. Nc3 e6 7. 0-0 Nf6 8. d4 cd 9. Nd4 Be7 10. Be3 10. b3 0-0 11. Bb2± 0-0 11. Qe2 Rfd8 12. Rfd1 b6 13. Racl a6 14. f3 Qb7 15. b3 Rac8 16. Kh1 Rc7 17. Qf2 Rdc8 with the idea 18...b5 19. cb Nd4 20. Bd4 e5 18. Nde2 Nd7 18...b5 19. cb ab 20. Bb6 Rd7 21. Nb5 Rb8 Nd4 + 19. a4!? Nc5 20. Rbl g6 21. Qg3 Nb4 22. h4! Rd7 23. h5 Ncd3? 23...Rcd8 24. Bg5±; 23...d5? 24. hg hg (24...fg 25. Qh3 with the idea of 26. Bc5) 25. ed ed 26. Nf4 dc 27. Ng6 fg 28. Qg6+ 28. Kh8 29. Rd4 Rc6 30. Qh5+ +; 23...Qc7 with the idea of ...Be7-f6-e5 24. Rd2! Nc5 24...Bf6? 25. Rbd1 Be5 26. f4 Bc3 27. Nc3 Nc5 28. Rd6 Rd6 29.

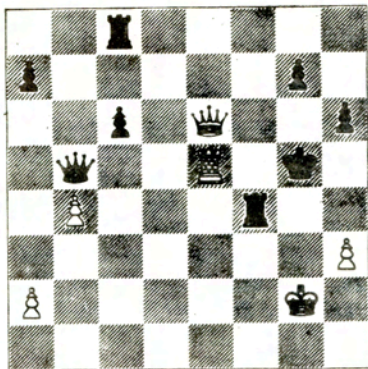
Rd6 Ne4 30. Ne4 Qe4 31. Rb6 + 25. Bf4?! 25. hg hg 26. Nf4 Bf6 27. Ng6? fg! (27...Bc3? 28. Ne5+ with the idea 29. Nd7 ±) 28. Qg6+ Bg7 29. Bc5 bc! 30. Qe6+ Kf8 unclear (31. Rd6? Re7 -); 27. Nce2! d5 28. Nh5 Bh8 29. cd cd 30. e5 ±; 27. Nce2! Bg7 28. Qg5 Rcd8 29. Ng3 d5? 30. ed ed 31. Bd4! dc 32. Bg7 +. 25... d5! 26. hg hg 27. Be5 de 28. Nf4 g5! 28... Rd2? 29. Ng6 f6 30. Ne7+ Kf7 31. Nc8 fe (31...Qc8 32. Bf6 +) 32. Qe5! Qc8 33. Qf4+ + 29. Ne6! 29. Qh3? f6 30. Ng6 Kg7 +; 29. Nh5? Rd2 30. Nf6+ Bf6 31. Bf6 Kf8 32. Qg5 Rd3 + 29...fe? 29...Rd2! (29...Ne6? 30. Qh3 Ng7 31. Rd7 +) 30. Ng5 f6! (30...Kf8 31. Nge4 Ne4 32. Qg7+ Ke8 33. Ne4 Rd3 34. Rel with compensation for the material) 31. Ne4+ Kf7 32. Nd2 Rh8+! 33. Kgl fe 34. Qe5 Bf6 35. Qf5 Qc8 ± 30. Qh3 Bf6?? time 30...Rd2 31. Qh8+ Kf7 32. Qh5+ Kf8 33. Qh8+; 30...Bf8 31. Qh8+ Kf7 32. Qh5+ Ke7 33. Qg5+ Ke8 34. Qg6+ Rf7 35. Ne4 Ne4 36. Qe6+ =. 31. Rd7 Nd7 32. Qe6+ Kg7 33. Ne4?? 33. Qe7+ Kg6 34. Bf6 +. 33... Be5 34. Rd1 Rc7! 34...Rh8+? 35. Kgl Bh2+ 36. Kf1 Nf8 37. Qf6+ Kg8 38. Rd8 Qf7 39. Rf8+! + 35. Ng5 Bf6?? 35...Nc6! (35...Qc6 36. Qc6) 36. Qf7+ Kh6 37. f4 Nf6 38. Qe6 Re7 + 36. Qf7+ Kh6 37. Rd7! Kg5 37...Rd7 38. Qf6+ Kh5 39. g4 Kh4 40. Ne4+ Kh3 41. Qh6# 38. Rc7 + Qb8 39. f4+ Kf5 40. g4? 40. Qd7+! Ke4 41. Qe6+ Kd3 42. Qc8! Qc8 43. Rc8 Ke4 44. Rf8 +; 40. Qd7+! Kf4 41. Qd6+ Be5 42. Rf7+ Ke4 (42...Ke3 43. Rf3+ +) 43. Qb4 Qh8+ 44. Kgl Bd4+ 45. Kf1 Qh1+ 46. Ke2 Qg2+ 47. Kdl + 40...Ke4? 40...Kg4! 41. Qe6+ Kf3 41...Kd3 42. Qc8 + 42. Rh7 Qf4 42...Qa8 43. Kgl + 43. Rh3+ Kf2 44. Rh2+ Kg3 45. Qel+ Kg4 46. Qgl+ 1-0 (Notes by Jack Peters)

J. Peters - R. Ervin, Lone Pine 1978

French Defence

1. e4 e6 2. d4 d5 3. Nd2 c5 4. Ngf3 Nc6 5. ed ed 6. Bb5 Bd6 7. dc Bc5 8. 0-0 Nge7 9. Nb3 Bd6 10. Rel 0-0 11. Bg5 Bg4 11...Qc7 12. c3 Bg4 13. h3 Bh5 14. Be2 h6 15. Be7 Ne7 16. Nfd4 ±, Karpov-Korchnoi #18 match game 1974. 12. h3 Bh5 13. Bc6!? bc 14. Nbd4 Rc8 14... Qc7? 15. Be7 Be7 16. Nc6 ±; 14...Qd7? 15. Be7 Bf3 (15...Be7 16. Ne5+) 16. Nf3 Be7 17. Ne5 ± with the idea 18. Nc6 15. c4 h6?! 15... (Re8 16. Be7 Be7 16...Bf3? 17. Bd8 Bd1 18. Be7! Rfe8 19. Nf5 Be7 20. Ne7+ Kf8 21. Rad1+ 17. g4 17. Qa4?! Bf3 18. Nf3 Bf6= 17...Bg6 18. Ne5 Bc5! 19. b4! 19. Nec6? Qf6 20. cd Rc6± 19...Bd4 20. Qd4 dc 20...a5? 21. ba Qa5 22. Ng6 fg 23. Re7 Rf7 24. Rf7 Kf7 25. Rbl+

21. Qc4 Kh7 22. Rad1! Qh4 23. Kg2 f5?? 23... Rfe8 24. Ng6 fg 25. Re8 Re8 26. Rd7±; 23... Rfd8!? 24. Ng6! 24. Qe6 Qg5 25. f4 Qf6 26. Nd7 Qh4 27. Nf8+ Rf8 28. Qe7 Rf6 unclear. 24...Kg6 25. gf+ Kh5 25...Kg5 26. Rd4 Qh5 27. Rg4+ ← 26. Rd4?? 26. f4! (with the idea 27. Qe2+) Rf5 27. Qe2+ Kg6 28. Qe6+ ← 26...Qg5+ 27. Rg4 Qf5 28. Qe2 Qb5! 29. Rg5+ 29. Rh4+ Kg6 30. Qc2+ Qf5; 29. Qe7 Qd5+! 30. Kgl g5 31. Re5 Qd1+ 29...Kg5 30. Qg4+ Kf6 31. Qe6+ Kg5 32. f4+ Rf4 33. Re5+



33...Qe5?? 33...Kh4! 34. Rb5 Rcf8! 35. Qc6 Rf2+ 36. Kgl Rf1+ 37. Kh2 R8f2+ 38. Qg2= 34. Qe5+ Rf5 35. h4+!+- Kg4 36. Qe4+ Rf4 37. Qg6+! Kh4 38. Qg3+ Kh5 39. Qf4 Rd8 40. Qf3+ Kg6 41. Qc6+ Kh7 42. a4 Rd2+ 43. Kf3 Rb2 44. Qc3 Ra2 45. a5 1-0 (Notes by Jack Peters)

Miles (England) - Zaltsman, Lone Pine 1978
English Opening

1. c4 Nf6 2. Nc3 e6 3. e4 c5 4. e5 Ng8 5. Nf3 Nc6 6. d4 cd 7. Nd4 Ne5 8. Bf4 Ng6 9. Bg3 Nf6 TN Unbelievable but true this is a TN. Usual is 9...a6 but then 10. Qa4 and 0-0-0 with a strong attack. 10. Ndb5 e5 11. Bd3 a6 12. Qa4 If 12. Bg6 ab 13. Bd3 b4 14. Nb5 Bc5 (not 14...d6 15. c5!) 15. Be5 b6 16. Bg3 Qe7 17. Qe2 (not 17. Be2 Ne4) Be6. 12...Bc5 13. 0-0-0 0-0 14. Bg6 fg! 15. Be5 Ng4 16. Bd6 Nf2 17. Bc5 If 17. Bf8 Bf8 18. Nd5 Nh1 19. Rh1 Qg5+. 17...Qg5 18. Kb1 Qc5 19. Rd5 ab! 20. Qa8 Qc4 21. Rel 21. Rgl b4 22. Qa4 Rf4 23. b3 Qc3 24. Rcl Ne4 25. Qa8 Rf8 26. R5d1 d5 27. Rc3 Nc3+ 28. Kcl Nd1 and wins! 21...d6 22. Qa5 Bf5 23. Kal Nd3 24. b3 Qc6! Less promising is 24...Qb4 25. Qb4 Nb4 26. Rd2 Nc2+ 27. Rc2 Bc2 28. Nb5. After 24...Qc6, because of the threat of ...b6 Black is winning. 25. Rd3 Bd3 26. Rd1 Rf1 27. Rf1 Bf1 28. g3 h6 29.

Qb4 Qc5 30. Qc5 dc 31. Ne4 b6 32. Nd6 b4 33. Nc8 b5 34. Nd6 Kf8 35. Ne4 c4 36. Nc5 Ke7 37. Na6 cb 38. ab Kf6 39. Nb4 Kf5 40. Nc2 Ke4 41. Kb2 Bd3 42. Nb4 Be2 43. Kc3 Kf3 44. Nd5 Bf1 45. Kb4 g5 46. Nc3 Kg2 47. Nb5 Kh2 48. Nd6 1-0 (Notes by Zaltsman)

G. Garcia (Colombia) - Gruchasz
Lone Pine 1978, Sicilian Defence

1. e4 c5 2. Nf3 Nc6 3. d4 cd 4. Nd4 Nf6 5. Nc3 e5 6. Nbd5 d6 7. Bg5 a6 8. Na3 b5 9. Bf6 gf 10. Nd5 f5 11. ef 11. c3 fe?! 12. Bb5 ab 13. Nb5 but instead 11...Bg7 is possible to transpose into the text. 11...Bf5 12. c3 Bg7 13. Nc2 0-0 14. Nce3 Be6 15. a4 b4!TN 15... ab ab 16. Ra4 a5 or 15...f5 16. ab ab 17. Ra8 Qa8 18. Bb5 Nd4 Rajna-Tisdall, Hastings Challengers 1976-77. 16. Bc4 16. Nb4 Nb4 17. cb d5 or 16. cb Nd4 16...bc 17. bc e4! 18. 0-0 Ne5 19. Qe2 Qg5 20. Kh1 Kh8 21. Ba6 Not so much to win a pawn as to untangle his pieces. If 21. Nc7 Nc4 22. Nc4 (or 22. Ne6 fe and 23...d5 with advantage to Black) Bc4 23. Qc4 Rc8 24. Qd5 Qd5 25. Nd5 Bc3 with an extra pawn. 21...Rg8 22. Nc7 22. f4!? 22...Ra7 23. Ne6 fe 24. Bb5 d5 25. Racl Waste of time, but White's position is difficult. He should try 25. f4 immediately. 25...Bf8 26. f4 ef 27. gf Ng6 28. Ng2 Nf4! White should not survive the attack. White's bishop is out of the game. 29. Nf4 Qf4 30. Qf2 Rag7 31. Qd4 31. Rgl is impossible because of 31...Bc5. 31...Qf5 32. Be2 e5 33. Qf2 Qh3 34. Rgl Bc5 0-1 (Notes by Gruchasz)

Zaltsman - Bohm (Netherlands), Lone Pine 1978
Slav Defence

1. c4 c6 2. Nf3 d5 3. d4 Nf6 4. Nc3 dc 5. a4 Bf5 6. e3 e6 7. Bc4 Bb4 8. 0-0 Nbd7 9. Qe2 Bg6 10. Rd1 Qc7TN Usual is 10...Qe7 or 10... 0-0 11. Bd3 Bd3 12. Rd3 e5 13. e4 0-0-0?! Very risky. Sounder is 13...Bd6 or 13...h6 14. Bg5 ed 15. Rd4 Bc3 16. bc h6 16...Rde8! 17. Qc4 Nb6 18. Qc5 with the idea 19. a5. 17. Bh4 Rhe8 18. Rad1! Nc5 Black cannot find a useful move. 19. e5 g5 20. Rd8 Rd8 21. Rd8 Qd8 22. Ng5 hg 22...Nd5 23. Ne4! (23. Nf3 Nc3) Qh4 24. Nc5 Nc3? 25. Qb2 Qd4 26. Qb7+ and wins i.e. 26...Kd8 27. Qa8+ Ke7 28. Qa7+ Ke8 29. Qb8+ Ke7 30. Qc7+ Ke8 31. Qc6+ etc. 23. Bg5 Na4 24. Bf6 Qd7 25. h4 Nc3 26. Qf3 Qd2 27. Kh2 Ne2 28. e6 was threatened 28. Bg5! Qe1? 28...Qd1 29. Qe7 Qgl+ 30. Kh3 Qh1+ 31. Kg4 Qg2+ 32. Kh5 + 29. e6 1-0 (Notes by Zaltsman)

MATCH, KAVALEK-ANDERSSON
WASHINGTON D.C., APRIL-MAY 1978

Game One

Kavalek-Andersson, Queen's Indian Defence

1. d4 Nf6 2. c4 e6 3. Nf3 b6 4. g3 Bb7 5.
Bg2 Be7 6. 0-0 0-0 7. Nc3 Ne4 8. Qc2 Nc3 9.
Qc3 c5 10. Rd1 cd 11. Nd4 Bg2 12. Kg2 a6
13. Qf3 Ra7 14. b3 Qc7 15. Bb2 Rc8 16. Rd2
Qb7 17. a4 $\frac{1}{2}$ - $\frac{1}{2}$

Game Two

Andersson-Kavalek, King's Indian Defence

1. Nf3 Nf6 2. g3 d6 3. d4 g6 4. b3 Bg7 5.
Bb2 0-0 6. Bg2 c6 7. 0-0 a5 8. Nbd2 a4 9.
c4 Nbd7 10. Qc2 Re8 11. e4 e5 12. b4 ed 13.
Nd4 h5 14. N4f3 b6 15. Rad1 Bb7 16. Rfel
Qc7 $\frac{1}{2}$ - $\frac{1}{2}$

Game Three

Kavalek-Andersson, English Opening

1. c4 e6 2. g3 Nf6 3. Bg2 c5 4. Nf3 Be7 5.
Nc3 Nc6 6. d4 d5 7. cd Nd5 8. 0-0 Nc3 9. bc
0-0 10. e4 cd 11. cd Bf6 12. Be3 b6 13. Rcl
Bb7 14. Qa4 Rc8 15. Rfd1 Na5 16. d5 ed 17.
ed Qe8 18. Qe8 Rfe8 19. Rc8 Rc8 20. Bg5 Bg5
 $\frac{1}{2}$ - $\frac{1}{2}$

Game Four

Andersson-Kavalek, Old Indian Defence

1. Nf3 Nf6 2. g3 d6 3. d4 Nbd7 4. Bg2 e5 5.
de de 6. 0-0 Bc5 7. Nc3 0-0 8. Nd2 Nb6 9.
Nde4 Be7 10. b3 Ne4 11. Ne4 Be6 12. Bb2 f5
13. Nc3 c6 14. Qd8 Rad8 15. Rfd1 e4 16. Rd8
Rd8 17. Rd1 Nd5 18. a3 Kf7 19. Nbl a5 20.
c4 Nc7 21. Rd8 Bd8 22. Nd2 Na6 23. Kf1 Nc5
24. Bd4 Bg5 25. f4 Be7 26. Kel b5 27. Kdl
Nb7 28. cb cb 29. Bb2 b4 30. ab Bb4 31. Kc2
Bd2 32. Kd2 Bb3 33. Kc3 a4 34. e3 Nd6 35.
Bf1 Ke6 36. Kd4 Bc2 37. Bc4 Nc4 38. Kc4 Kf7
39. Kc3 Bd3 40. Kd2 Kg6 41. Kel Kh6 42. Kf2
g5 $\frac{1}{2}$ - $\frac{1}{2}$

Game Five

Kavalek-Andersson, Semi-Tarrasch

1. c4 c5 2. Nf3 Nf6 3. Nc3 e6 4. e3 d5 5.
d4 Nc6 6. cd Nd5 7. Bd3 cd 8. ed Be7 9. 0-0
0-0 10. Re1 Bf6 11. Be4 Qd6 12. Bc2 Nce7
13. Ne5 Ng6 14. Ng4 Be7 15. Ne5 Bf6 16. Ne4
Qb6 17. Nf6 Nf6 18. Bg5 Nd5 19. Bb3 Qd6 20.
Qf3 b6 21. Bd5 Qd5 22. Qd5 ed 23. Ng6 hg
24. Re7 Bf5 25. Racl Rfe8 26. Rcc7 Re7 27.
Re7 Kf8 28. Rb7 Re8 29. Bd2 Ra8 30. h4 Bc8
31. Rc7 Be6 32. f3 Ke8 33. g4 Bd7 34. Bf4
Ke7 35. Rb7 Ke6 36. b3 Bc6 37. Rc7 Bd7 38.
Kf2 b5 39. Ke3 a5 40. Rb7 Bc6 41. Rc7 Bd7

42. Rb7 Bc6 43. Rb8 Rb8 44. Bb8 a4 45. Kd2
ab 46. ab Be8 47. Ba7 f6 48. Bb6 g5 49. h5
Bd7 50. Kc3 f5 51. Bd8 fg 52. fg Kd6 $\frac{1}{2}$ - $\frac{1}{2}$

Game Six

Andersson-Kavalek, King's Indian Defence

1. Nf3 Nf6 2. g3 d6 3. d4 Nbd7 4. Bg2 e5 5.
c4 g6 6. b3 Bg7 7. 0-0 0-0 8. e3 Re8 9. Nc3
c6 10. Qc2 ed 11. Nd4 a5 12. Ba3 Nc5 13.
Rad1 Qe7 14. Rd2 Ng4 15. Rel Ne5 16. h3 Na6
17. Qd1 Nb4 18. Na4 Nd7 19. Bb2 Nc5 20. Nb6
Rb8 21. a3 $\frac{1}{2}$ - $\frac{1}{2}$

Game Seven

Kavalek-Andersson, Caro-Kann Defence

1. e4 c6 2. d4 d5 3. Nd2 de 4. Ne4 Nf6 5.
Nf6 ef 6. c3 Bd6 7. Bd3 0-0 8. Ne2 Re8 9.
Qc2 g6 10. h4 Nd7 11. h5 Nf8 12. Bh6 Qc7
13. 0-0 Be6 14. c4 Rad8 15. hg fg 16. c5
Be7 17. Nf4 Bf7 18. Bc4 Rd5 19. Rdel Red8
20. Bd5 cd 21. Re3 Rd7 22. Rhel g5 23. Bf8
Bf8 24. Rh1 h6 25. Ng6 Bc5 26. Rc3 Bd6 27.
Rh6 Kg7 28. Nf8 Ke7 29. Rh8 Ke7 30. Qe2 Be6
31. Rh7 1-0

Game Eight

Andersson-Kavalek, King's Indian Defence

1. Nf3 Nf6 2. b3 d6 3. d4 Bg4 4. Bb2 Nbd7
5. Nbd2 c6 6. e3 e5 7. h3 Bh5 8. de de 9.
Be2 Qa5 10. 0-0 e4 11. Nh2 Bg6 12. Nc4 Qc7
13. a4 0-0-0 14. Bg4 Ng4 15. Qg4 f5 16. Qg5
Nb6 17. Be5 Qe7 18. Nb6 ab 19. Qe7 Be7 20.
a5 ba 21. Ra5 Bf6 22. Ra8 Kd7 23. Rd1 Ke7
24. Rdd8 Rd8 25. Bf6 gf 26. Rd8 Kd8 27. Kf1
Ke7 28. Kel Kd6 29. Nf1 Ke5 30. g3 b5 31.
Nd2 Bh5 32. Nbl Bf3 33. b4 Kd5 34. Na3 Bg2
35. h4 Bf3 36. Kd2 Bh5 37. Kc3 Bf7 38. Nbl
Ke5 39. Kd2 h5 40. Nc3 Bc4 41. Kel Kd6 42.
Nbl Ke5 43. Nd2 Bd5 44. Kf1 Kd6 45. Kg2 Ke5
46. f3 ef 47. Nf3 Kd6 48. Kf2 Bf3 49. Kf3
Ke5 50. c3 Kd5 51. Kf4 Ke6 52. e4 fe 53. Ke4
f5 54. Kd4 Kd6 55. c4 bc 56. Kc4 Kc7 $\frac{1}{2}$ - $\frac{1}{2}$

Game Nine

Kavalek-Andersson, Caro-Kann Defence

1. e4 c6 2. d4 d5 3. Nd2 g6 4. h3 Bg7 5.
Nf3 Nh6 6. Bd3 0-0 7. 0-0 f6 8. c4 de 9.
Ne4 Nf5 10. Bc2 Na6 11. Rel Bd7 12. Bf4 Be8
13. g4 Bh6 14. Bd2 Bd2 15. Qd2 Nd6 16. b3
Nf7 17. Re2 Bd7 18. Rael b6 19. Ng3 e6 20.
Qf4 Nc7 21. h4 e5 22. de fe 23. Ne5 Ne6 24.
Qd2 Ne5 25. Re5 Nf4 26. Re7 Bg4 27. Qc3 Nh3
28. Kh1 Rf7 29. Rf7 Kf7 30. f3 Be6 31. Qe5
Qf6 32. Qf6 Kf6 33. Ne4 Ke7 34. Ng5 Ng5 35.
hg Rd8 36. Re2 Rd7 37. Kg2 a5 38. Be4 Rd6
39. Kg3 Kd7 40. Kf4 Rd1 41. Ke5 b5 42. cb

cb 43. Rc2 a4 44. Rc5 Bb3 45. ab a3 46. Rc2
b5 47. Rh2 Ke8 48. Bd5 1-0

Game Ten

Anderesson-Kavalek, King's Indian Defence

1. Nf3 Nf6 2. d4 d6 3. g3 Nbd7 4. Bg2 e5 5.
O-O g6 6. b3 Bg7 7. c4 O-O 8. Qc2 Re8 9.
Nc3 c6 10. e3 a6 11. de de 12. Bb2 Nc5 13.
Rfd1 Qc7 14. Nd2 Bg4 15. Bf3 Bf3 16. Nf3 e4
17. Nel a5 18. Rd2 Qc8 19. Ne2 Qf5 20. Kg2
Ng4 21. Nd4 Qh5 22. h3 Ne5 23. Qd1 Qh6 24.
Rb1 Ncd3 25. Nd3 Nd3 26. Bal Rad8 27. Ne2
Qh5 28. g4 Qh4 29. Ng3 Bal 30. Ral Qf6 31.
Ne4 Qe5 32. f3 f5 33. gf gf 34. Rd3 Rd3 35.
Qd3 Qal 36. Nd6 Qb2 37. Kfl Rd8 38. c5 Qcl
39. Ke2 Qc5 0-1

Lone Pine 1978

Portisch (Hungary) - Miles (England)

Queen's Gambit Accepted

1. d4 d5 2. c4 dc 3. Nf3 Nf6 4. e3 Bg4 5. Bc4
e6 6. O-O Nbd7 7. Nc3 Bd6 8. h3 Bh5 9. e4 e5
10. Be2 O-O 11. de Ne5 12. Nd4 Bc5 13. Nb3
Qd1 14. Bdl Bb6 15. a4 Bdl 16. Rd1 c6 17. a5
Bc7 18. f4 Ng6 19. e5 Nd5 20. Nd5 cd 21. Rd5
Rad8 22. Rd8 Rd8 23. Bd2 f6 24. Rcl Bb8 25.
ef Nf4 26. Rc4 Nd3 27. Bc3 Ne5 28. Rb4 b6
29. fg Kg7 30. ab ab 31. Rb5 Re8 32. Nd4 Kg8
33. Rb6 Ba7 34. Ra6 Re7 35. Kfl Nd3 36. Nf5
Rf7 37. g4 h5 38. Rg6 Kf8 39. Rd6 1-0

Ree (Netherlands) - van der Sterren (Netherlands), King's Indian Defence

1. c4 Nf6 2. Nc3 g6 3. e4 d6 4. d4 Bg7 5. Nf3
O-O 6. Be2 Bg4 7. Be3 Nfd7 8. Qd2 c5 9. d5
Qa5 10. O-O Bc3 11. bc Nb6 12. Bh6 Re8 13.
Qf4 Bf3 14. Qf3 N8d7 15. Qh3 Ne5 16. f4 Nec4
17. f5 Ne5 18. fg fg 19. Rf2 c4 20. Raf1 Qc5
21. Qe6 Kh8 22. Kh1 Qc7 23. Bg7 Kg7 24. Rf7
1-0

Seirawan - Tarjan, English Opening

1. c4 g6 2. g3 Bg7 3. Bg2 e5 4. Nc3 d6 5. Nf3
Nc6 6. O-O Nge7 7. d3 h6 8. Rbl Be6 9. b4 Qd7
10. Re1 O-O 11. Nd2 Bh3 12. Bh1 Rab8 13. b5
Nd4 14. Qa4 a6 15. ba Qa4 16. Na4 ba 17. Nc3
Rbl 18. Ndbl Rb8 19. e3 Kf8 20. Na3 Ne6 21.
Nc2 Nc5 22. Rdl Bg4 23. f3 Bf5 24. Nel e4 25.
d4 ef 26. Bf3 Nd7 27. Ba3 Ke8 28. Be2 h5 29.
Nf3 Bh6 30. e4 Bg4 31. Kg2 Nc6 32. Nd5 Kd8
33. c5 dc 34. dc Bg7 35. Bcl Bf3 36. Bf3 a5
37. Be2 f6 38. Bf4 Nce5 39. c6 Rb2 40. Kfl
Nc6 41. Nc7 g5 42. Bd6 Bf8 43. Ne6 Ke8 44.
Bh5 1-0

Lombardy - Mestel (England), QP Game

1. d4 d5 2. Nf3 e6 3. e3 Nf6 4. Nbd2 Be7 5.
Bd3 O-O 6. O-O Nbd7 7. Ne5 Ne5 8. de Nd7 9.
f4 g6 10. b3 f6 11. ef Bf6 12. Rbl e5 13. Ba3
e4 14. Bf8 Qf8 15. Be2 Qc5 16. Kf2 g5 17. b4
Qb6 18. Ne4 de 19. Qd5 Kg7 20. fg Be5 21. Bc4
Kg6 22. Qg8 Kh5 23. Be2 Kh4 24. g3 Kh3 1-0

Portisch (Hungary) - Petrosian (USSR)

Nimzo-Indian Defence

1. d4 Nf6 2. c4 e6 3. Nc3 Bb4 4. e3 O-O 5.
Bd3 d5 6. Nf3 b6 7. O-O Bb7 8. a3 Bd6 9. b4
dc 10. Bc4 a5 11. b5 Nbd7 12. Bb2 e5 13. Rel
e4 14. Nd2 Qe7 15. Be2 Rad8 16. Qc2 Rfe8 17.
f3 ef 18. Bf3 Bf3 19. Nf3 Ne4 20. Ne4 Qe4 21.
Qe4 Re4 22. Nd2 Re6 23. e4 Nc5 24. Nc4 Ne4
25. Racl Bf8 26. Ne5 Nd6 27. a4 f6 28. Nf3
Rel 29. Nel Rd7 30. Nf3 Nf5 31. Kf2 h5 32.
Rc2 g5 33. Rc4 Bd6 34. g3 Kf7 35. Ngl Ne7 36.
Ne2 Nd5 37. Bcl Ke6 38. Rc2 Kf5 39. Kf3 g4
40. Kf2 Rh7 41. Rd2 h4 42. Kg2 Ke4 43. Rdl
Ne3 44. Be3 Ke3 45. Nc3 h3 0-1

Timman (Netherlands) - van der Sterren (Netherlands), English Opening

1. c4 c5 2. Nf3 g6 3. e4 Nc6 4. d4 cd 5. Nd4
Nf6 6. Nc3 d6 7. Be2 Nd4 8. Qd4 Bg7 9. Bg5 h6
10. Be3 O-O 11. Qd2 Kh7 12. O-O Be6 13. Bd4
Qa5 14. Rad1 a6 15. Qe3 Ng4 16. Bg4 Bg4 17.
Bg7 Kg7 18. Rd5 Qb4 19. f4 Bd7 20. Qd4 Kg8
21. e5 de 22. Re5 Rad8 23. Rd5 Qb2 24. Rf2
Qal 25. Rfl Qb2 26. Rbl Qc2 27. Kfl e5 28. fe
Qf5 29. Kgl Qc2 30. Rel Bc6 31. Ne4 Bd5 32.
Nf6 Kg7 33. cd b6 34. Ne4 Kh7 35. d6 Qc6 36.
h4 h5 37. Rfl Kh6 38. Ng5 Qd7 39. Qf4 Qf5 40.
Nf7 Kg7 41. Qh6 1-0

Tarjan - Henley, Nimzo-Indian Defence

1. d4 Nf6 2. c4 e6 3. Nc3 Bb4 4. e3 c5 5.
Bd3 Nc6 6. Nf3 Bc3 7. bc d6 8. O-O O-O 9.
Nd2 e5 10. Nb3 b6 11. f4 ef 12. Rf4 Ne7 13.
e4 Bb7 14. Rf6 gf 15. Bh6 Re8 16. Qh5 Ng6
17. Nd2 Re6 18. Rfl Qe7 19. e5 de 20. d5 e4
21. de ed 22. ef Qf7 23. Qf5 Bg2 24. Rf2 Bb7
25. Qf6 Qf6 26. Rf6 Rd8 27. Kf2 Ne5 28. Rf4
Bc8 29. Bg5 Rf8 30. Rf8 Kf8 31. Bf4 Nc6 32.
Ke3 Bf5 33. Ne4 Na5 34. Kd3 Ke7 35. Bb8 Kd7
36. Bf4 Ke6 37. Bg3 Nc6 38. Bc7 Kd7 39. Bg3
Na5 40. Bb8 a6 41. Bg3 Ke6 42. Bc7 Be4 43.
Ke4 Nc4 44. a4 b5 45. ab ab 46. Bf4 Nd6 47.
Kd3 Kd5 48. Bh6 Nf5 49. Bg5 c4 50. Kc2 Ke4
51. Kd2 Kf3 52. Bf6 h5 53. Be5 h4 54. Kc2
Ne3 55. Kb2 h3 56. Ka3 Kg2 57. Kb4 Ng4 58.
Bc7 Nh2 59. Kb5 Nf1 0-1

Lein - Benko, Sicilian Defence

1. e4 c5 2. Nc3 d6 3. f4 Nc6 4. Bb5 Bd7 5. Nf3 g6 6. 0-0 Bg7 7. d3 Nf6 8. Kh1 0-0 9. Be3 Rc8 10. Qd2 Ng4 11. Bg1 Nd4 12. Bd7 Qd7 13. h3 Nf3 14. Rf3 Nf6 15. f5 Qc6 16. Raf1 b5 17. Be3 d5 18. ed Nd5 19. Bh6 Nc3 20. bc f6 21. Rg3 g5 22. Bg7 Kg7 23. h4 h6 24. Re3 Rc7 25. Qe2 Rf7 26. Qh5 Kg8 27. Kgl Rg7 28. Rf2 Kh7 29. Rh3 g4 30. Rg3 Rc8 31. Rg4 Rg4 32. Qg4 Rg8 33. Qf3 Qf3 34. Rf3 Rg4 35. Be3 Ra4 36. Re7 Kg8 37. Rc7 Ba2 38. Rc5 Rc2 39. d4 a6 40. Kh2 h5 41. Kg3 Kf7 42. Kf3 Ke7 43. g4 hg 44. Kg4 Rg2 45. Kh3 Rc2 46. h5 Kd7 47. h6 Rcl 48. Kg2 Rc2 49. Kg3 Rcl 50. d5 Rgl 51. Kf4 Rf1 52. Ke4 Rel 53. Kd3 Rd1 54. Kc2 Rhl 55. Rc6 Rh6 56. Ra6 Ke7 57. Rde6 Kf7 58. Rb6 Rh5 59. Rb7 Ke8 60. Rb5 Rf5 61. Kd3 Kd7 62. Kd4 Kc7 63. Kc5 Rh5 64. c4 Rh4 65. Rbl f5 66. d6 Kc8 67. Kd5 f4 68. Kc6 1-0

Rogoff - Zaltsman, English Opening

1. Nf3 c5 2. c4 Nc6 3. Nc3 g6 4. e3 Nf6 5. d4 cd 6. ed d5 7. Bg5 Ne4 8. cd Nc3 9. bc Qd5 10. Be2 Bg7 11. 0-0 0-0 12. c4 Qd6 13. d5 Na5 14. Rcl b6 15. Rel Re8 16. c5 Qd7 17. a4 a6 18. cb Qd6 19. Be3 Bb7 20. Rc7 Rac8 21. Qc2 Rc7 22. bc Rc8 23. Rcl Qd5 24. Rd1 Qc6 25. Rd8 Bf8 26. Qc6 Nc6 27. Bb6 e6 28. Nd2 Ne7 29. Bf3 Bf3 30. gf 1-0

Larsen (Denmark) - Rogoff, Caro-Kann Defence

1. e4 c6 2. d4 d5 3. Nc3 de 4. Ne4 Nd7 5. Nf3 Ngf6 6. Nf6 Nf6 7. Ne5 Nd7 8. Bf4 Ne5 9. Be5 Qb6 10. Bd3 f6 11. Bg3 Be6 12. Qe2 Bf7 13. 0-0 e6 14. c3 0-0 15. Bc4 Re8 16. b4 h5 17. h4 Rg8 18. Qf3 Be7 19. a4 g5 20. a5 Qd8 21. a6 gh 22. ab Kb7 23. Ra7 1-0

P. Whitehead - Verduga (Ecuador), Sicilian

1. e4 c5 2. Nf3 d6 3. d4 Nf6 4. Nc3 cd 5. Nd4 a6 6. Bg5 e6 7. f4 b5 8. e5 de 9. fe Qg7 10. Qe2 Nfd7 11. 0-0 0-0 Bb7 12. Ne6 fe 13. Qc4 Qe5 14. Bd3 Be7 15. Be7 Ke7 16. Rhel h5 17. Qb4 Qc5 18. Qh4 g5 19. Qg3 Rf8 20. Be4 h4 21. Qh3 Ra7 22. Bb7 Rb7 23. Qe6 Kd8 24. Rd6 Rc7 25. Rd5 Qf2 26. Rd2 Qf7 27. Qe5 Kc8 28. Qg5 Rc3 29. bc Qa2 30. Rde2 Nb6 31. Qc5 Kb7 32. Qf8 N8d7 33. Re7 Qa3 34. Kdl 1-0

Browne - Portisch (Hungary), QG Accepted

1. d4 d5 2. c4 dc 3. Nf3 Nf6 4. e3 e6 5. Bc4 c5 6. 0-0 a6 7. a4 Nc6 8. Qe2 cd 9. Rd1 Be7 10. ed 0-0 11. Nc3 Nd5 12. Bd3 Ncb4 13. Bb1 b6 14. a5 ba 15. Ne5 Bb7 16. Ne4 Rc8 17. Ra3 f5 18. Nc5 Bc5 19. dc Rc5 20. Rg3 Rc7 21. h4 Qc8 22. Bg5 Nf6 23. h5 Ne4 24. Be4 Be4 25. h6

Nd5 26. hg Rg7 27. Rcl Qb7 28. Bh6 Rg3 29. fg Rc8 30. Rc8 Qc8 31. Qh5 Qc5 32. Kh2 Qe7 33. Nc6 Qd7 34. Qg5 Kh8 35. Bf8 Qf7 36. Bh6 Qf6 37. Qh5 Qg6 38. Qh4 Nf6 39. Kgl Bc6 40. Qf4 e5 41. Qd2 Ne4 42. Qd8 Be8 43. Bf8 h6 0-1

Evans - Shamkovich, Alekhine's Defence

1. e4 Nf6 2. e5 Nd5 3. d4 d6 4. Nf3 Bg4 5. Be2 c6 6. 0-0 Bf3 7. Bf3 de 8. de e6 9. Qe2 Nd7 10. Rel Qc7 11. a3 Bc5 12. c3 a5 13. b3 0-0 14. Ra2 Rfd8 15. g3 Ne7 16. Bh5 Bb6 17. Rd2 Ng6 18. Bg6 hg 19. b4 c5 20. Bb2 Rac8 21. Qe4 Nf8 22. b5 c4 23. a4 Rd2 24. Nd2 Qc5 25. Re2 Qd5 26. Ba3 Nd7 27. Kfl Nc5 28. Bc5 Rc5 29. Qd5 ed 30. Nf3 Kf8 31. e6 f6 32. Nh4 Ke8 33. Ng6 d4 34. cd Rd5 35. Re4 Bd4 36. Rh4 1-0

Timman (Netherlands) - Balshan (Israel)

Ruy Lopez

1. e4 e5 2. Nf3 Nc6 3. Bb5 a6 4. Ba4 Nf6 5. 0-0 Be7 6. d4 ed 7. Rel b5 8. e5 Nd5 9. Bb3 Nb6 10. Nd4 Nd4 11. Qd4 c5 12. Qg4 c4 13. Qg7 Rf8 14. Bh6 Bc5 15. Nd2 Bb7 16. Ne4 Be4 17. Re4 Qc7 18. Qh7 0-0 19. Bf8 Rf8 20. c3 cb 21. ab Kb7 22. b4 Be7 23. Rd1 Qc6 24. Red4 Kc7 25. Qe4 f5 26. ef Qe4 27. Re4 Bf6 28. Rf4 Na4 29. b3 Nc3 30. Rcl Re8 31. Rf6 Kb7 32. Kfl 1-0

Formanek - Gheorghiu (Rumania), Sicilian

1. e4 c5 2. Nf3 e6 3. c3 d5 4. e5 d4 5. Bd3 Nc6 6. 0-0 Nge7 7. Rel Ng6 8. g3 a6 9. a4 b6 10. h4 Qc7 11. Qe2 Bb7 12. Na3 Na5 13. h5 Ne7 14. Be4 Nd5 15. Nc2 Nb3 16. Rbl Qd7 17. c4 Ne3 18. Bb7 d3 19. Qe3 dc 20. Ral Ncl 21. Ba8 Nd3 1-0

Peters - Portisch (Hungary), Sicilian

1. e4 c5 2. Nf3 d6 3. Bb5 Nc6 4. 0-0 Bd7 5. c3 a6 6. Ba4 b5 7. Bc2 Bg4 8. d3 e6 9. Nbd2 Be7 10. h3 Bh5 11. Rel Rc8 12. Nfl Ne5 13. Ng3 Bf3 14. gf g5 15. Nh5 Ng6 16. f4 gf 17. Bf4 Bg5 18. Be3 Be3 19. fe Qg5 20. Kh1 Qh4 21. Qg4 Qg4 22. hg Ke7 23. Rfl Nh6 24. Nf6 Ng8 25. Nh5 Nh6 26. Nf6 Ng8 $\frac{1}{2}$ - $\frac{1}{2}$

Tarjan - Taylor, Ruy Lopez

1. e4 e5 2. Nf3 Nc6 3. Bb5 a6 4. Ba4 Nf6 5. 0-0 Be7 6. d4 ed 7. Rel 0-0 8. e5 Ne8 9. Bf4 b5 10. Bb3 d5 11. c3 Na5 12. cd Nb3 13. Qb3 c6 14. Qe3 h6 15. Nbd2 Nc7 16. Bg3 Ne6 17. Rad1 Bd7 18. Rc2 c5 19. dc d4 20. Qa3 Bc6 21. Qd3 Qd5 22. Ne4 Qa2 23. Bh4 Be4 24. Qe4 Nc5 25. Qg4 Bh4 26. Rc5 Bd8 27. Nd4 Qa4 28. Rc6 Bb6 29. Rb6 Qa5 30. Rbl Qb6 31. Nf5 g6 32. Nh6 Kh7 33. Qh3 Qe6 34. Ng4 1-0

Seirawan - Zaltsman, English Opening

1. c4 Nf6 2. Nc3 e6 3. e4 c5 4. f4 Nc6 5.
Nf3 b6 6. g3 Bb7 7. d3 d6 8. Bg2 Be7 9. 0-0
0-0 10. h3 a6 11. Kh2 Rb8 12. b3 Ba8 13. Bb2
b5 14. Qe2 Nd7 15. Nd1 bc 16. dc a5 17. Nc3
14 18. Qd2 e5 19. Rael Bc6 20. Nd4 ed 21.
Nd5 Bd5 22. ed Bf6 23. Be4 g6 24. Bc2 a4 25.
Bcl ab 26. ab Ra8 27. Qd3 Re8 28. Bd2 Qc7
29. Kg2 Kg7 30. g4 h6 31. g5 hg 32. fg Be5
33. Re2 Nf8 34. Ref2 Re7 35. Bd1 Rae8 36. h4
Kg8 37. h5 Bh8 38. Qh3 Re3 39. Be3 Re3 40.
Qh4 Be5 41. Rf7 Qf7 42. Rf7 Kf7 43. hg Kg8
44. Bg4 Bg7 45. Qf2 Ng6 46. Be6 Kh8 47. Qf7
nh4 48. Kgl 1-0

Van Riemsdyk (Brazil) - Youngworth, Sicilian

1. e4 c5 2. Nf3 d6 3. d4 cd 4. Nd4 Nf6 5.
Nc3 a6 6. Bc4 e6 7. Bb3 b5 8. 0-0 Be7 9. f4
0-0 10. e5 de 11. fe Nfd7 12. Qh5 Nc6 13.
Nc6 Qb6 14. Kh1 Qc6 15. Bf4 Bb7 16. Rf3 Nc5
7. Rgl Ne4 18. Qg4 Kh8 19. Rel Rad8 20. Ne4
Qe4 21. Rfe3 Qg6 22. Qe2 Rd4 23. Rf1 Rfd8 24.
Rg3 Qe4 25. Qg4 g5 26. h3 Qg6 27. Qe2 gf 28.
Rg6 hg 29. Rf2 Re4 30. Qf1 Re3 31. Kh2 Bh4
32. Re2 Bg3 33. Kgl Rd4 34. c3 Re2 0-1

Christiansen - Henley, English Opening

1. c4 Nf6 2. Nc3 e5 3. Nf3 d6 4. d4 ed 5.
Nd4 g6 6. g3 Bg7 7. Bg2 0-0 8. 0-0 Nbd7 9.
b3 Re8 10. Bb2 c6 11. Rbl a5 12. e3 Nc5 13.
a3 Qb6 14. Bal Ng4 15. h3 Ne3 16. fe Re3 17.
Kh2 Rd3 18. Qe2 Qd8 19. Ne4 Bd4 20. Nc5 Re3
21. Qf2 dc 22. Qf7 Kh8 23. Rbd1 Be6 24. Qb7
Rc8 25. Rf4 Qg5 26. Rg4 Bg4 27. Rd4 cd 28.
rd4 Re5 29. hg Rd8 30. Be5 Qe5 31. Qc6 Rd3
j2. Qa8 Kg7 33. Qa7 Kh6 34. Qf2 Kg5 35. b4
a4 36. c5 Ra3 37. b5 Rb3 38. b6 a3 39. c6 a2
40. c7 Rg3 41. Qg3 Qg3 42. Kg3 al(Q) 43.
c8(Q) Qe5 44. Kf3 Qf6 45. Ke2 Qb2 46. Kf1
Qb1 47. Kf2 Qb6 48. Kg3 Qd6 49. Kh3 Qd3 50.
Kh2 $\frac{1}{2}$ - $\frac{1}{2}$

Ormanek - Panno (Argentina), Sicilian

1. e4 c5 2. Nf3 e6 3. c3 Nf6 4. e5 Nd5 5. d4
cd 6. cd d6 7. Nc3 Nc6 8. ed Qd6 9. Bd3 Be7
10. 0-0 0-0 11. Qe2 Ndb4 12. Be4 Nd4 13. Nd4
Qd4 14. Be3 Qe5 15. f4 Qb8 16. Rad1 Nc6 17.
Kh1 Qc7 18. Nb5 Qa5 19. Bd2 Bb4 20. Nc3 f5
21. a3 fe 22. ab Nb4 23. Ne4 Qa6 24. Qh5 Nd5
25. Rf3 Qa4 26. Rel Qe8 27. Qe5 Rf5 28. Qd4
Qc6 29. Rg3 Rf7 30. Bc3 Nc3 31. Nf6 Rf6 32.
Qf6 Qd7 33. Qc3 Qf7 34. Rdl Bd7 35. Qc7 Bc6
36. Rd8 Rd8 37. Qd8 Qf8 38. Qf8 Kf8 39. Kgl
Kf7 40. Kf2 Kf6 41. Rg5 h6 42. Re5 g5 43. g3
gf 44. gf b6 45. Ke3 Bg2 46. Kd4 Bf1 47. Rh5
Kg6 48. Rh4 a5 49. Ke5 b5 50. Ke6 Bc4 51.

Ke5 a4 52. f5 Kg5 53. Rd4 1-0

Browne - H. Olafsson (Iceland), Queen's Ind.

1. d4 Nf6 2. c4 e6 3. Nf3 b6 4. g3 Bb7 5.
Bg2 d5 6. cd ed 7. 0-0 Bd6 8. Nc3 0-0 9. Bg5
h6 10. Bf6 Qf6 11. Rcl Nd7 12. Qb3 Qe6 13.
Nb5 c6 14. Nd6 Qd6 15. Rfd1 f5 16. e3 Rae8
17. a4 Kh8 18. a5 Ba6 19. Qc2 Bb5 20. ab ab
21. Ral g6 22. Ra3 Ra8 23. Rda1 Ra3 24. Ra3
Rc8 25. h4 Qe6 26. Bh3 Rf8 27. Ra7 Qe4 28.
Qd1 c5 29. Rd7 Bd7 30. Ne5 f4 31. Nd7 fe 32.
Nf8 e2 33. Qel cd 34. Ng6 1-0

Westerinen (Finland) - E. Meyer, Sicilian

1. e4 c5 2. Nf3 e6 3. b3 d5 4. ed ed 5. Bb2
Nf6 6. Bb5 Bd7 7. Qe2 Be7 8. Bf6 gf 9. Nc3
a6 10. Bd7 Qd7 11. 0-0 Nc6 12. Na4 Rg8 13.
Rfel Qg4 14. g3 0-0-0 15. c4 Kb8 16. Nc3 dc
17. bc Nb4 18. Qe4 Bd6 19. Qg4 Rg4 20. Re4
f5 21. Rg4 fg 22. Ng5 Rd7 23. Rel h6 24. Re8
Ka7 25. Nge4 Be7 26. a3 f5 27. ab cb 28. Nd5
fe 29. Ne7 Rc7 30. Nc8 Rc8 31. Re4 a5 32. d3
b3 33. Re5 a4 34. Ra5 Kb6 35. Ra4 Kc5 36.
Ra5 Kd4 37. Rb5 Kc3 38. Rb7 Rd8 39. c5 Rd3
40. c6 Kc2 41. Kg2 Rc3 42. c7 b2 43. h3 h5
44. hg hg 45. f3 gf 46. Kf2 bl(Q) 47. Rbl
Kbl 48. g4 Kc2 49. g5 Rc7 50. Kf3 Rc4 0-1

Browne - Taulbut (England), Pirc Defence

1. d4 g6 2. e4 d6 3. Nc3 Bg7 4. Nf3 Nf6 5.
Be2 0-0 6. 0-0 c6 7. a4 Qc7 8. h3 e5 9. de
de 10. Bc4 Nh5 11. Rel Nd7 12. Be3 Nf4 13.
a5 h6 14. Qcl b5 15. ab Nb6 16. Bb3 Be6 17.
Be6 fe 18. Nd2 Qe7 19. Kh2 Qg5 20. g3 Qh5
21. gf ef 22. Bb6 f3 23. Nfl Be5 24. Ng3 g5
25. Rh1 ab 26. Ra8 Ra8 27. Nd1 Qh4 28. Ne3
Qe4 29. Ng4 Bg3 30. Kg3 Ral 31. Nf6 1-0

Speelman (England) - Ree (Netherlands)
English Opening

1. c4 e5 2. Nc3 d6 3. Nf3 f5 4. d4 e4 5. Bg5
Nf6 6. Nd2 Be7 7. e3 0-0 8. h4 c6 9. Be2 Na6
10. a3 Nc7 11. g4 d5 12. cd cd 13. Qb3 Ng4
14. Bg4 Bg5 15. hg fg 16. Nde4 Be6 17. Ng3
Qg5 18. Qb7 Qe7 19. Qb3 Rab8 20. Qc2 g6 21.
Rcl Nb5 22. Na4 Nd4 23. ed Bd7 24. Kdl Rf2
25. Qf2 Ba4 26. b3 Bb3 27. Rc8 Kg7 28. Nf5 gf
29. Rh7 Kh7 30. Qf5 Kg7 31. Qg4 Kf6 32. Qf4
Kg6 33. Qg4 Kf6 34. Qf4 $\frac{1}{2}$ - $\frac{1}{2}$

Christiansen - Brasket, English Opening

1. c4 Nf6 2. Nc3 e6 3. e4 c5 4. e5 Ng8 5.
Nf3 Nc6 6. d4 cd 7. Nd4 Ne5 8. Nbd5 f6 9.
Be3 b6 10. f4 Nc6 11. f5 Ne5 12. Qh5 g6 13.
fg Ng6 14. Bd3 Bg7 15. 0-0 a6 16. Nd6 Kf8 17.
c5 bc 18. Bc5 N8e7 1-0

EIGHTH ANNUAL
LOUIS D. STATHAM MASTERS - PLUS CHESS TOURNAMENT
 LONG BEACH, CALIFORNIA, APRIL 2 TO 12, 1978

Rank	Name, Title, Country	Rating	R1	R2	R3	R4	R5	R6	R7	R8	R9	Score	Cat/FS/BN	AO	Prz/Morn
1.	BERT LARSEN, GM, Denmark	2620	L33	W66	W37	W38	W43	W17	D2	W21	W8	7½	9/2469	2453	\$12000
2.	Lev Polugaevsky, GM, USSR	2620	W20	W24	W47	W31	D17	W26	D1	D6	D5	7	11/2506	2493	7500
3.	John Peters III, GM, USA	2430	D66	W68	W12	D4	D6	W22	D5	D27	W28	6½	10/2494/4½	2501	3267++
4.	Lajos Portisch, GM, Hungary	2630	D67	W36	W56	D3	W13	D5	L6	W32	W22	6½	10/2496	2482	3267
5.	Anatoly Lein, GM, USA	2505	D57	D11	W59	W47	W42	D4	D3	W12	D2	6½	10/2480	2477	3267
6.	Tigran Petrosian, GM, USSR	2620	W43	D56	D18	W24	D3	D21	W4	D2	D12	6	11/2502	2489	650
7.	Vitaly Zaltsman, USA	2440	W58	L31	W63	D41	D34	W43	W13	L8	W21	6	8/2438/5	2438	650++
8.	Kenneth Rogoff, IM, USA	2520	L39	D51	W61	W56	D18	W37	W26	W7	L1	6	8/2434/6	2425	650++
9.	Hans Ree, IM, Holland	2500	D34	W55	D33	D11	D41	W42	D32	D22	W24	6	7/2422/6½	2413	650
10.	Larry Evans, GM, USA	2530	D64	L50	W52	D32	W57	D20	W31	D11	W29	6	7/2421	2409	650
11.	Peter Björnäs, IM, Canada	2450	D30	D5	W39	D9	L21	W33	W14	D10	D16	5½	10/2490/5½	2494	125++
12.	Pal Benko, GM, USA	2485	W49	D32	L3	W25	W31	D13	W16	L5	W25	6	9/2475	2474	125
13.	Anchoy Miles, GM, England	2565	W59	W37	D31	W19	L4	D12	L7	D18	W32	5½	8/2449	2436	125
14.	Gert Ligterink, IM, Holland	2460	D68	L19	W53	W65	D15	D28	L11	W41	W35	5½	7/2420/6½	2418	125
15.	Jan Timman, GM, Holland	2585	L31	W60	W67	D18	D14	L32	W42	D17	W23	5½	8/2431	2414	125
16.	Dragutin Sahovic, GM, Yugoslavia	2490	D63	D34	W64	D33	D19	W41	L12	W43	D11	5½	7/2401	2392	125
17.	Jonathan Mastel, IM, England	2450	D19	W63	W35	W22	D2	L1	L28	D15	D18	5	10/2496/5½	2501	
18.	Arthur Bisguier, GM, USA	2425	W53	D22	D6	D15	D8	D27	D25	D13	D17	5	10/2484	2491	
19.	Margair Petursson, Iceland	2350	D17	W14	W48	L13	D16	L24	D37	D39	D27	5	9/2467/4½	2480	IM+
20.	Edward Formansk, IM, USA	2410	L2	W45	W30	W27	L26	D10	L22	D34	W42	5	9/2466/6	2472	
21.	Michael Stoen, GM, England	2510	D55	D64	D34	W35	W11	D6	W24	L1	L7	5	9/2461	2456	
22.	Walter Browne, GM, USA	2550	W25	D18	W32	L17	W33	L3	W20	D9	L4	5	9/2463	2453	
23.	Muhua Angustsson, Iceland	2350	L48	L43	W62	L46	W55	W38	W40	W26	L15	5	8/2434/5	2443	IM+
24.	Dragoljub Janosevic, GM, Yugoslavia	2455	(W65)	L2	W36	L6	W50	W19	L21	W25	L9	5	9/2458	2466*	
25.	Shawn Taubut, IM, England	2405	L22	D53	W68	L12	W65	W56	D18	L24	W46	5	7/2421/6½	2423	
26.	Samuel Reshevsky, GM, USA	2490	W51	D33	D42	W50	W20	L2	L8	L23	W49	5	7/2424	2417	
27.	Florin Gheorghiu, GM, Romania	2520	D50	D67	W57	L20	W47	D18	D29	D3	D19	5	7/2421	2410	
28.	William Lombard, GM, USA	2540	L42	L58	W44	W64	W38	D14	W17	D29	L3	5	7/2418	2405	
29.	Leonid Shashkovich, GM, USA	2485	W52	D41	D50	L42	W61	W34	D27	D28	L10	5	7/2412	2404	
30.	Oscar Panno, GM, Argentina	2580	D11	D57	L20	D51	D59	W50	D41	D31	W43	5	7/2410	2391	
31.	Yasar Seirawan, USA	2455	W15	W7	D13	L2	L12	W46	L10	D30	D40	4½	8/2526/4	2534	IM+
32.	Helgi Olafsson, Iceland	2420	W61	D12	L22	D10	W40	W15	D9	L4	L13	4½	10/2498/4½	2507	IM+
33.	Jonathan Speelman, England	2410	W1	D26	D9	D16	L22	L11	W44	D46	D39	4½	9/2470/4½	2477	IM+
34.	Jaime Sunye, Brazil	2360	D9	D16	D21	W48	D7	L29	D39	D20	D37	4½	9/2459/4½	2470	IM+
35.	Timothy Taylor, USA	2460	W8	D48	L17	L21	L46	W65	W56	W47	L14	4½	9/2459/4½	2459	IM+
36.	Eugene Meyer, USA	2350	W38	L4	L24	L57	W64	D48	L47	W56	W59	4½	8/2438/5	2448	
37.	Zvonimir Mestrovic, IM, Yugoslavia	2435	W45	L13	L1	W58	W39	L8	L19	W54	D34	4½	8/2428/6	2428	
38.	Heikki Westerinen, GM, Finland	2450	L36	W44	W58	L1	L28	L23	D53	W60	W50	4½	6/2393	2387	
39.	Kim Commons, IM, USA	2485	W54	L47	L11	W60	L37	W51	D34	D19	D33	4½	6/2390/7	2380	
40.	Larry Christiansen, GM, USA	2490	W60	D42	D41	L43	L32	W52	L23	W53	D31	4½	6/2379	2367	
41.	Ronald Henley, USA	2340	W46	D29	D40	D7	D9	L16	D30	L14	D48	4	9/2474/4½	2489	
42.	Paul Van der Starren, Holland	2400	W28	D40	D26	W29	L5	L9	L15	W52	L20	4	9/2475/4½	2484	
43.	Hans Böhne, IM, Holland	2410	L6	W23	W46	W40	L1	L7	W45	L16	L30	4	9/2471/6	2478	
44.	Paul Whitehead, USA	2200U	L56	L38	L28	W66	W60	D47	L33	D59	W63	4	6/2389/5½	2411	
45.	Steve Odendahl, USA	2200U	L37	L20	D49	D55	W58	W57	L43	D48	D47	4	6/2385/5½	2406	
46.	James Tarjan, GM, USA	2510	L41	D52	L43	W23	W35	L31	W59	D33	L25	4	7/2411/6½	2401	
47.	Rajko Bogdanovic, IM, Yugoslavia	2430	W62	W39	L2	L5	L27	D44	W36	L35	D45	4	6/2391/7	2387	
48.	Norman Weinstein, IM, USA	2475	W23	D35	L19	L34	D51	D36	D63	D45	D41	4	5/2356/7	2343	
49.	Herman van Riemsdyk, Brazil	2375	L12	L61	D45	D52	D53	D54	W51	W63	L26	4	3/2318/6½	2312	
50.	Carlos Garcia-Palermo, Argentina	2385	D27	W10	D29	L26	L24	L30	D60	W62	L38	3½	9/2451/4½	2459	
51.	Camille Coudari, Canada	2285	L26	D8	D54	D30	D48	L39	L49	W65	D53	3½	7/2408/5½	2422	
52.	Rubens Filguth, Brazil	2350	L29	D46	L10	D49	W62	L40	W57	L42	D55	3½	7/2408/5½	2414	
53.	John Donaldson, USA	2200U	L18	D25	L14	W63	D49	D57	D38	L40	D51	3½	6/2386/5½	2407	
54.	Walter Morris, USA	2325	L39	D65	D51	D59	L56	D49	W58	L37	D57	3½	6/2390/5½	2398	
55.	Julius Loeksson, USA	2335	D21	L9	L65	D45	L23	L60	W61	W64	D52	3½	5/2356/6	2359	
56.	Rolando Belinas, GM, Philippines	2440	W44	D6	L4	L8	W54	L25	L35	L36	D58	3	8/2437	2437	
57.	John Fedorowicz, USA	2360	D5	D30	L27	W36	L10	L45	L52	D58	D54	3	7/2418/5½	2425	
58.	Robert Gruchacz, USA	2425	L7	W28	L38	L37	L45	W64	L54	D57	D56	3	6/2398/5½	2395	
59.	Michael Rohde, IM, USA	2425	L13	W62	L5	D54	D30	D53	L46	D44	L36	3	6/2390/7	2387	
60.	Curt Braskat, USA	2375	L40	L15	W66	L39	L44	W55	D50	L38	D61	3	6/2380/5½	2381	
61.	Perry Youngworth, USA	2230	L32	W49	L8	D62	L29	L63	L55	W66	D60	3	5/2360/6	2375	
62.	Jay Whitehead, USA	2245	L47	L59	L23	D61	L52	W66	W65	L50	D64	3	4/2338/6	2349	
63.	Denis Verduga, IM, Ecuador	2355	D16	L17	L7	L53	W66	W61	D68	L49	L44	3	4/2348/X	2348	
64.	Gildardo Garcia, Columbia	2365	D10	D21	L16	L28	L36	L58	W66	L55	D62	2½	7/2410/5½	2415	
65.	Asgeir Arnason, Iceland	2350	(L24)	D54	W55	L14	L25	L35	L62	L51	D66	2	5/2357/6	2358*	
66.	Jonas Erlingsson, Iceland	2270	D3	L1	L60	L44	L63	L62	L64	L61	D65	1	4/2344/6	2352	
67.	Amihai Balshan, Israel	2415	D4	D27	L15							1		2530*	
68.	Roy Ervin, USA	2390	D14	L3	L25							½		2420*	

Tournament table prepared by Myron Lieberman.

PCA



PROFESSIONAL
CHESS
ASSOCIATION

To the fraternity of Chessplayers and enthusiasts:

Chess history has been made! On April 8th at Lone Pine, California the Professional Chess Association (PCA) was formed and had its first Annual Meeting.

For the first time in history anywhere, masters joined hands, American Masters united because they take pride in their mission, to bring to the public the joy and beauty of their art. The Masters united to awaken the public to Chess as a valuable mental discipline, a course in logic, a worthwhile exercise of the mind. The Masters have united to promote excellence in their field. They are especially capable of such promotion because they do know and love Chess, and are therefore dedicated to working in the field.

Is there anyone more capable of promoting Chess to perfection than the dedicated Master?

The general goals of the PCA may be found in our Constitution. But we intend to place priority in three areas: education, opportunity for our masters around the country to participate in quality events and thereby improve their art, and maximum international participation for our Masters.

To these immediate ends, we hope to establish a national program for Chess education (schools, hospitals, prisons, homes for the aged), to organize a Masters' Open with a view towards establishing a Pro Tour and to set up a clearing house for international tournaments with a view towards greater international participation for American Masters generally.

Simply organizing towards these goals requires work, expertise and finances. If someone has knowledge and experience in some field and feels this expertise would be helpful to the PCA, please step forward. If someone might be in a position to make a financial contribution towards PCA goals, please do not hesitate. Our Masters would be most grateful. (Checks may be made out to the American Chess Foundation earmarked for the PCA.)

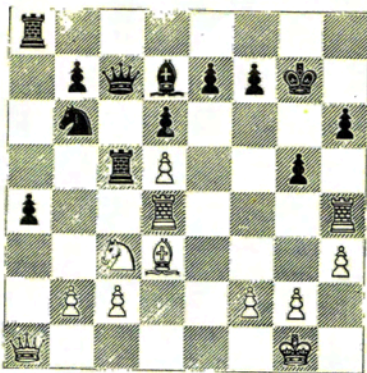
For our readers unable to make large contributions, please pitch in with your Associate Memberships. To our Masters who have not yet done so, please send in your dues; the PCA is yours to make or break.

To those who have already sent contributions, we thank you deeply, Finally, we thank you all for listening to this call for help.

*Fraternally yours,
International Grandmaster
William Lombardy
PCA Secretary-Treasurer*

Christiansen - Seirawan, People's Open Tournament, February 1978. Berkeley, California Pirc Defence

1. Nf3 g6 2. e4 Bg7 3. d4 d6 4. Nc3 Nf6 5. Be2 0-0 6. 0-0 Nc6 7. d5 Nb8 8. Bg5 c6 9. Qd2 a5 10. Rad1 Qc7 11. Rfel Nbd7 12. h3 a4 13. a3 Re8 14. Bf1 Nb6 15. Bh6 cd 16. Bg7 Kg7 17. ed Bd7 18. Re3 Ra5 19. Rd3 Nc4 20. Qcl Rc5 21. Ng5 Na3 22. Rd4 h6 23. Nge4 Ne4 24. Re4 Nc4 25. Rdd4 Nb6 26. Rh4 Rh8 27. Qal Ra8 28. Bd3 g5



29. Rh6 Kh6 30. Rh4 Kg7 31. Rh7 Kf6 32. Rh6 Kg7 33. Rh7 Kf6 34. Ne4 Kg6 35. Qd1 g4 36. Qd2 Rd5 37. Qh6 Kf5 38. Rf7 Ke5 39. Qg7 Ke6 40. Rf6 Ke5 41. Rd6 Kf4 42. g3 1-0

Various Results

The Western Canada Open April 29 - May 7, Edmonton, Alberta 1. Seirawan 8-1, 2-3 Grefe, Biyiasis 7½-1½.

Tuason Open May 12-14, sponsored by Jim Click Ford. 1. Tarjan 5-0, 2-8. Middleton, Ervin, Chellstorp, Mondragon, Winslow, Whart-

on and Bradford, 4-1.

William Comeau Memorial, Boston, Mass., March 1978. 1. Watson 6½-1½, 2-3. N. Weinstein, Curdo 4½-2½, 4. Frankle 4-3 5. Tobin 3-4, 6. Bono 2½-4½ 7. Balmazi 2-5 8. C. Chase 1-6.

Lancashire Open (England), Blackpool 1978 1-4 Bellin (England), Webb (England), Whiteley (England) and J. Silman (US) 4½-½

Telephone Matches 1978, Semi-Finals:
Washington D.C. 3½ - Los Angeles 2½
Andersson (Sweden) - Peters 1-0

Diesen - Loftsson 0-1
Ginsburg - Pollard ½-½
E. Meyer - Kent 1-0
Odendahl - Jones 0-1
J. Meyer - Weinberger 1-0

Berkeley 4½ - Westfield, N.J. 1½

Tarjan - Bisguier ½-½
Christiansen - Rohde 1-0
Kaplan - Fedorowicz 0-1
deFirmian - Valvo 1-0
P. Whitehead - Regan 1-0
J. Whitehead - Gruchacz 1-0

Telephone Matches 1978, Finals:

Berkeley 3½ (1st) - Washington D.C. 2½ (2nd)

Tarjan - Diesen 1-0
Christiansen - Ginsburg 0-1
Kaplan - E. Meyer 1-0
deFirmian - Odendahl ½-½
P. Whitehead - Spital ½-½
J. Whitehead - J. Meyer ½-½

Westfield 4 (3rd) - Los Angeles 2 (4th)

Bisguier - Commons 1-0
Rohde - Peters ½-½
Fedorowicz - Loftsson 0-1
Valvo - Pollard 1-0
Regan - Winslow ½-½
L.D. Evans - Weinberger 1-0

PCA
89 MacArthur #6
Oakland, CA 94610

**BULK RATE
U.S. POSTAGE
Oakland, CA
Permit No. 4020**