

World Chess Championship Match Ends in 12-12 Tie

By Dr. H. J. Ralston

The match for the World Championship between Mikhail Botvinnik and Vassily Smyslov ended in a tie at 12-12.

Each player won 7 games and 10 were drawn.

Under the rules of the International Chess Federation (FIDE) the champion retains his title in the event of a drawn match. So Botvinnik continues to wear the crown he won in 1948.

The champion seems chronically unable to win a match against a top-flight player. In 1933 he played to a 6-6 tie with Flohr, and in 1937 a 6½-6½ tie with Levenfish.

1951 Encounter

In the world championship encounter of 1951 against Bronstein, Botvinnik again drew with a score of 12-12, as in the match just concluded.

Botvinnik did win a match against Ragozin in 1940, but Ragozin is not quite in the top class.

It begins to look like Botvinnik's strength is more in tournament play than in match play.

Botvinnik's crown is now secure for three more years, if he so chooses. Samuel Reshevsky of the United States will issue an official challenge soon, but the champion need not accept it, under FIDE rules.

Annual Match

San Francisco and the Peninsula scored a 14½-11½ victory over East Bay in the annual match played last Saturday evening at Mechanic's Institute.

East Bay started off with a rush, piling up a three-point lead early in the evening. But the

western team gradually forged ahead, winning fairly handily.

Over a hundred players and spectators packed the quarters, and a considerable number stayed until the bitter end—3 a.m.!

The 52 players got some first-class practice for the traditional North-South match, to be played in San Luis Obispo May 30.

San Luis Obispo Play

Players and spectators intending to go to San Luis Obispo should arrange for living accommodations as soon as possible. The chess headquarters in San Luis Obispo will be Hotel Anderson, but a number of other hotels and motels are available. Write to the San Luis Obispo Chamber of Commerce for reservations.

Imre Konig, international chess master, will give a lecture at the Golden Gate Chess Club, Hotel Cecil, tomorrow night at 8. Admission is 50c. Players are urged to attend.

James R. Wells, 104 Carl-st, San Francisco 17, would like to find a congenial opponent. Wells states that he is a fair player, and wants to become better.

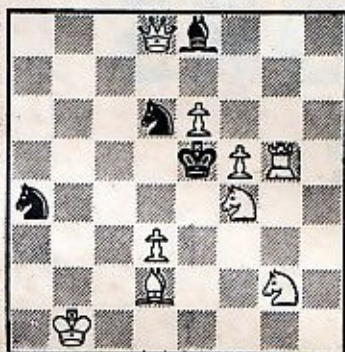
Anyone interested may communicate with Wells directly or through this column.

A. K. Bell of Palo Alto sends us the following 3-move miniature, composed by the late British problemist, P. H. Williams.

The position is—White: King on Queen five; Rook on King Bishop seven; Bishop on Queen Knight one; Knights on King three and Queen three. Black: King on King seven; Pawn on Queen seven. White mates in three moves.

Correct solutions received by

TASK No. 46—By F. B. Feast



White Mates in Two Moves (Value four points)

Answer to Task No. 45: 1. Q-R6ch, PxQ; 2. R-R1ch, R-R5; 3. Kt-R3 and mate next move.

next Wednesday will be acknowledged in this column.

We continue with games from the world championship.

No. 17—KING'S INDIAN

White—Smyslov

Black—Botvinnik

1 Kt-KB3	Kt-KB3	17 BxPch	K-R1
2 P-KKt3	P-KKt3	18 B-KB4	Kt-QB2
3 B-Kt2	B-Kt2	19 B-Kt3	Kt-B3
4 Castles	Castles	20 Q-Kt4	Kt-Q4
5 P-Q3	P-B4	21 B-Kt5	Q-R4
6 P-K4	Kt-B3	22 Kt-Q2	Kt-K61
7 P-B3	P-Q4	23 PxKt	QxKt
8 P-K5	Kt-K1	24 RxRch	RxR
9 P-Q4	B-Kt5	25 R-KB1	RxRch
10 P-KR3	BxKt	26 KxR	Q-B8ch
11 BxB	P-K3	27 K-Kt2	Q-Q7ch
12 B-K3	PxP	28 K-K1	Q-B8ch
13 PxP	P-B3	29 K-Kt2	BxPch
14 B-Kt4	PxP	30 K-B1	Q-B8ch
15 PxP	P-Q5	31 K-Kt2	Drawn
16 B-Q2	KtxP		

No. 18—KING'S INDIAN

White—Botvinnik

Black—Smyslov

1 P-Q4	Kt-KB3	30 R-Q1	R-R5
2 P-QB4	P-KKt3	31 R-Q2	Q-Q2
3 P-KKt3	B-Kt2	32 Q-K3	QR-KR1
4 B-Kt2	Castles	33 B-Kt1	Q-Q3
5 Kt-QB3	P-Q3	34 Q-B1	B-B1
6 P-K3	QKt-Q2	35 R-KB3	K-Q1
7 KKt-K2	P-QR3	36 Q-Q3	B-K2
8 P-Kt3	R-Kt1	37 B-K6	QR-R4
9 P-QR4	P-K4	38 RxRP	RxR
10 B-QR3	P-Kt3	39 BxR	P-B5
11 Castles	B-Kt2	40 PxP	Q-R6
12 P-Q5	P-QR4	41 QxQ	BxQ
13 P-K4	Kt-B4	42 B-B51	P-B1
14 Q-B2	P-R4	43 P-Kt6	B-Kt2
15 QR-K1	P-R5	44 PxP	BxP
16 B-B1	B-B1	45 P-B6	BxP
17 Kt-Kt5	B-Q2	46 R-K7	P-B6
18 B-Kt5	P-R6	47 RxB	R-R6
19 B-R1	BxKt	48 R-K4	R-R5
20 BPxB	Q-Q2	49 R-Kt3	RxP
21 BxKt	BxB	50 RxP	K-Q2
22 Kt-B1	B-Kt2	51 R-QR3	K-Q3
23 Kt-Q3	P-B4	52 K-Kt2	K-Q3
24 KtxKt	Q-P-Kt	53 K-Kt3	KxP
25 B-B3	Q-Q3	54 P-R3	K-K3
26 P-KKt4	PxB5	55 K-B3	K-B4'
27 P-Kt5	K-B2	56 K-Kt3	K-Kt4
28 K-R1	R-KR1	57 K-B3	R-B5ch
29 R-KKt1	K-K2	58 K-Kt3	Drawn

No. 19—FRENCH DEFENSE

White—Smyslov

Black—Botvinnik

1 P-K4	P-K3	11 Q-Q2	B-Q2
2 P-Q4	P-Q4	12 R-QKt1	Q-B2
3 Kt-QB3	B-Kt5	13 Q-Q6	Castles
4 P-QR3	BxKtch	14 QxQch	KxQ
5 PxB	PxP	15 Kt-Q4	P-QR3
6 Q-Kt4	Kt-B3	16 B-B4ch	K-B1
7 QxKtP	R-Kt1	17 P-Kt3	Kt-Q4
8 Q-R6	P-B4	18 B-Q2	P-K4
9 Kt-K2	Kt-B3	19 Kt-Kt3	B-Kt5
10 PxP	R-Kt3	20 B-Kt2	P-B4

21 Castles	B-B6	31 K-R3	R-Kt5
22 B-R3	R-B1	32 R-K6	RxP
23 KR-K1	K-B2	33 R-B6	R-Kt2
24 B-Kt2	P-KR4	34 RxP	RxP/B7
25 P-B4	Kt-B51	35 Kt-Kt5	R-K2
26 BxB	PxB	36 K-R4	Kt-Q5
27 BxKt	PxB	37 R-B4	Kt-Kt4
28 Kt-Q2	PxP	38 P-R4	Kt-B6
29 KtxP	PxRPch	39 R-B4	R/K2-K7
30 KxP	R/B1-KKt1	40 R-Kt6	Kt-Q4
		41 RxR	Drawn

May 21, 1954