

Chess Tourney Opens Tomorrow

By Dr. H. J. Ralston

Editor, The California Chess Reporter

The first round of the tournament for the championship of Northern California will be played tomorrow at 1 p. m. at Mechanics' Institute Chess Club, 57 Post-st., San Francisco. The tournament is open to all players, and will qualify three players to the California State Championship tournament to be played in Los Angeles over the Labor Day holiday in September.

Entrance fee is \$5 for members of the California State Chess Federation. Non-members will be assessed an additional \$2.50. The tournament will be directed by Mr. Guthrie McClain, chairman of the board of directors of the CSCF.

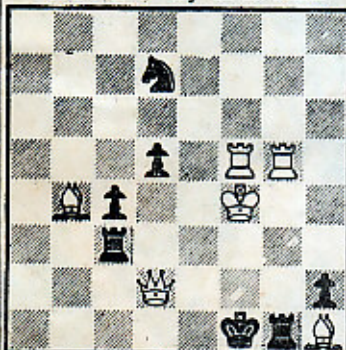
Tournaments Set

Arthur B. Stamer, director of the Mechanics' Institute Chess Club, has requested us to state that visitors to the club are always welcome. Here is an excellent opportunity for less experienced players to see some of California's top-notch chess players in action.

The third annual Valley of the Moon Chess Festival will be held in the Plaza at Sonoma on Sunday, Aug. 16. This event is sponsored by the Sonoma Valley Chamber of Commerce and will be directed by George Koltanowski.

The main feature of the festival will be a short tournament to be held between the hours of 11 a. m. and 6 p. m. Three games will be played by each participant, and may be started as late as 2 p. m. Entry fee up to and including Aug. 1 is \$1. Thereafter, the fee will be \$2. Entries, accompanied by check made payable to the Chamber of Commerce, should

Task No. 4—By C. L. Fitch



White Mates in Two Moves
(Value 3 points)

Answer to Task No. 3: B-K12

be sent to Sonoma Valley Chamber of Commerce, 50 East Spain-st., Sonoma, Cal.

Book Exciting

Henry Gross, president of the Golden Gate Chess Club, Hotel Cecil, 545 Post-st., San Francisco, writes:

"The club is anxious to secure new members in time for them to participate in the club championships for the various classes. These tournaments will start early in September. A new feature is the institution of a perpetual ladder tournament. This tournament opened officially July 14, with arbitrary ratings given to players from 400 to 800 points. Club dues are \$1 per month and there is no initiation fee. Commencing in August the well-known international master, Imre Konig, will commence a series of lectures that will not only explain the game of chess to beginners but will also help more experienced players to improve their game. The lectures will be followed by supervised play. The tournaments and lectures are open only to club members."

Visitors Welcome

A short time ago we reviewed in this column a new book, "The Art of the Checkmate," by Georges Renaud and Victor Kahn. This book is a gold-mine

of exciting and instructive games. We give below a game from the book, played between Dr. M. Vidmar and Dr. Max Euwe in the great Carlsbad tournament of 1929. Dr. Euwe was chess champion of the world from 1935 to 1937, and Dr. Vidmar has had a long and distinguished record in international chess play.

QUEEN'S PAWN

White—Dr. M. Vidmar

Black—Dr. M. Euwe

- | | |
|-----------|----------|
| 1—P-Q4 | Kt-KB3 |
| 2—Kt-KB3 | P-KKt3 |
| 3—B-Kt5 | B-K12 |
| 4—QKt-Q2 | P-B4 |
| 5—P-K3 | P-Kt3 |
| 6—B-Q3 | B-Kt2 |
| 7—Castles | P-KR3 |
| 8—B-KB4 | P-Q3 |
| 9—P-B3 | Kt-R4 |
| 10—Q-Kt3 | KtxB |
| 11—PxKt | Castles! |
| 12—QR-Q1 | |

Not BxP on account of . . . P-B5, followed by . . . P-Q4.

- | | |
|-------------|--------|
| 12— | Kt-B3 |
| 13—B-Kt1 | PxP |
| 14—PxP | P-K3 |
| 15—Kt-K4 | Kt-K2 |
| 16—Q-R3 | Kt-B4 |
| 17—R-Q2 | Q-K2 |
| 18—Kt-Kt3 | KtxKt |
| 19—BPxKt! | KR-B1 |
| 20—P-KKt4 | R-B2 |
| 21—P-B5 | KPxP |
| 22—PxP | P-KKt4 |
| 23—R-K1 | Q-B3 |
| 24—P-R3 | QR-QB1 |
| 25—R(Q2)-Q1 | R-B5 |
| 26—P-Q5 | Q-QR4 |
| 27—Kt-Q2 | P-Q5ch |
| 28—K-R1 | QxQP |
| 29—B-K4 | RxB |
| 30—KtxR | OxBP |
| 31—KtxQP | BxPch! |
| 32—KxB | R-B7ch |
| 33—K-R1 | Q-B5 |

It looks like white is lost, but he has a surprise for black!

34—R-K8ch! B-B1

Forced, if black does not want to lose a Rook.

35—RxBeh! KxR

36—Kt-B5ch K-Kt1

37—Q-B8ch! Resigns

For after 37 . . . KxQ, white mates with R-Q8. A startling finish!

7/24/53