

Palo Alto and Golden Gate Chess Teams in Tight Struggle for

By Dr. H. J. Ralston

After six rounds of play, Palo Alto leads Golden Gate by $\frac{1}{2}$ point in the Class B division of the San Francisco Bay Area Chess League.

Last Saturday evening Golden Gate retained its runner-up spot by defeating Alameda $4\frac{1}{2}$ - $2\frac{1}{2}$. Palo Alto had a bye.

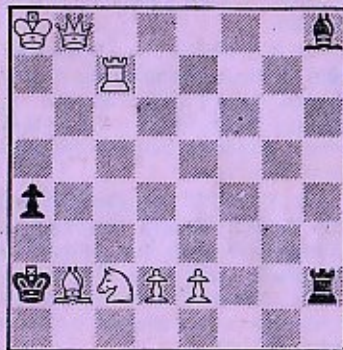
The Whiz Kids continued on their march for third place in the team tournament when the young Kings defeated the Russians 4-3.

Mechanics' Institute won from Oakland $4\frac{1}{2}$ - $2\frac{1}{2}$. This finished the Institute's schedule of play, for Mechanics' has a bye in the seventh and last round.

Standings

The standings: Palo Alto 5-0, Golden Gate $4\frac{1}{2}$ - $\frac{1}{2}$, Kings 3-2, Mechanics' Institute $3\frac{1}{2}$ - $2\frac{1}{2}$,

TASK No. 38—By N. Rutberg



White Mates in Three Moves
(Value 6 points)

Answer to Task No. 37: Q-Kt1

Russians and Oakland 1-4, Alameda 0-5.

The decisive match between

Palo Alto and Golden Gate will be played April 3 in the latter club's quarters in Hotel Cecil, 545 Post-st, at 7:30 p.m.

Applications for the forthcoming Pan-American Chess Congress are now being accepted. For classification write to the Pan-American Rating Committee. State tournament experience, if any, and list titles, etc. The address is 108 North Formosa-av, Los Angeles 36.

The tournaments are open to everyone.

Entrance Fee

The entrance fee for players is \$15. Season tickets are \$15, individual tickets \$1.50.

Play will occur in six groups, graded according to strength. In the Masters' tournament some of the best players in the world will participate. Applications already have been received from Italy, Yugoslavia, Holland, England, Canada, Cuba, Mexico, Colombia

and Argentina, as well as the United States.

The Congress will be held at the Hollywood Athletic Club from July 10 to 24. It is being sponsored by the Hollywood Chess Group and the California State Chess Federation.

The Russians have notified the United States Chess Federation that a Soviet team will arrive in New York about June 5, to meet a picked American team in a four-round match. The Russian team will be coming from an engagement in Argentina.

Hans Kmoch Director

Director of the match will be Hans Kmoch of the Manhattan Chess Club. Play will occur at the Roosevelt Hotel.

Vincent L. Eaton, problem editor of "Chess Life," has been appointed American representative on the International Problem Commission of the International Chess Federation.

Eaton has had a long and distinguished career as chess problem composer and editor.

A "rapid" tournament is played

each Thursday evening at Mechanics' Institute. Last week Jim Schmitt won a very tough contest by the score of 10-1, in a field of 12 players. Earl Pruner and Robert Currie tied for second and third places with 9-2.

Task No. 37

Task No. 37, by F. Gamage, gave our solvers lots of trouble. A number of solvers gave 1. Kt-B4 discovered check, R-Kt2; 2. Q-Kt2 mate, overlooking that the white King is in check!

Task No. 38, by the Swedish composer N. Rutberg, is a famous problem first published in 1927. Rutberg died recently at 54.

The following game was played Jan. 16 in the match between Golden Gate and Castle. International Master Imre Konig de-

feats local expert Guthrie McClain in neat style.

FRENCH DEFENSE

White—I. Konig

Black—W. G. McClain

- | | |
|-------------|----------|
| 1. P-K4 | P-K3 |
| 2. P-Q4 | P-Q4 |
| 3. Kt-QB3 | Kt-KB3 |
| 4. B-KKt5 | B-Kt5 |
| 5. PxP | PxP |
| 6. B-Q3 | Castles |
| 7. Kt-K2 | B-Kt5 |
| 8. P-B3 | B-KR4 |
| 9. Castles | P-B3 |
| 10. Kt-Kt3 | B-Kt3 |
| 11. P-B4 | BxKt |
| 12. PxB | BxB |
| 13. QxB | Q-Q3 |
| 14. Kt-B5 | Q-K3 |
| 15. B-R6! | Kt-K3 |
| 16. Q-R3 | PxB |
| 17. Q-Kt4ch | Kt-Kt4 |
| 18. QR-K1 | Q-B3 |
| 19. PxKt | Resigns. |

March 26, 1954