

PGE Chess Players To Enter Bay League

OCT 29 1954

By Dr. H. J. Ralston

Dick Moon, representing the chess team of the Pacific Gas & Electric Co., writes:

"The PG&E chess team is entered in the Bay Area Industrial Chess League for the first time. We have a group of 36 players to draw from, and expect to have a very strong team. This is the first year we have even had a chess group.

"The first team players are: Jack Yale, Eric Salo, Leo Orloff, David Lee, Simon Peters and Victor Salatko.

"We are presently in the process of conducting our own tournament to determine our own champion, and I shall send you the results of that."

Win First Match

Thirty-six players on the squad! It looks very much like P. G. & E. may dominate play in the Industrial Chess League in the not too distant future. Last week they won their first match against the veteran Fluorescent Fixtures team by a score of 3½-2½.

The second team match in the Industrial Chess League found Cutter Laboratories smashing the Pabco Products team, a newcomer to the league, by 4½-1½.

Cutter		Pabco Products	
1 S. Poulsen Jr.	1	W. Costellano	0
2 G. Lutz	1	P. Kelly	0
3 W. Pillsbury	1	J. Phelps	0
4 M. Zirker	1	F. Wood	0
5 S. Fiske	½	R. Beck	½
6 J. Vetter	0	L. Beck	1
	4½		1½

As we reported last week, the regular meeting night of the Golden Gate Chess Club will be Friday, at least until further notice.

Elegant Quarters

The club met in its new and elegant quarters on the top floor of the Press and Union League Club, 555 Post-st, last Friday. We urge all interested chess players to visit the club.

An interesting tournament is scheduled to start in New York on or about Dec. 18.

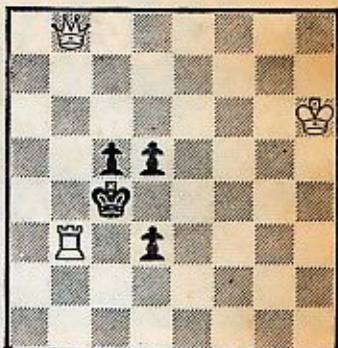
Seven of the strongest players in the country have been invited to play in a double-round tournament for the L. J. Rosenwald trophy. They are: S. Reshevsky, R. Fine, R. Byrne, D. Byrne, A. Bisguier, L. Evans and G. Kramer.

Play will occur at the Manhattan and Marshall chess clubs.

Only five solvers mastered the 7-m over by Dr. Rubesamen, which was published in this column two weeks ago. (We didn't actually expect that many solutions!)

The solution runs: 1 K-R1, R-K3; 2 R-K5, R-Q3; 3 R-Q5, R-QB3; 4 R-B5, R-QKt3; 5 R-Kt5,

Task No. 69—By G. W. Jensch



White Mates in Three Moves

(Value five points)

Answer to Task No. 68: The main line is 1 K-B1, K-Kt5ch; 2 Kt-B2ch, and mate next move.

R-K3; 6 R-Kt1 and mate next move.

Hard to Stump

The very honored solvers are Vasili Bassalaeff, Karl Bopp Jr., Henry M. Newcomb, John F. Yale, all of San Francisco; Harry Hokensen, Santa Rosa.

It seems to be practically impossible to stump these men!

Here is a very lovely 3-move miniature by J. Drtina, sent to us by Col. Mulberry Sellers:

White (two men): King on QB4; Queen on KKt4. Black (four men): King on QR5; Bishop on QB8; Pawns on QB3 and QB6. White mates in three moves.

The following short but sweet games were played in the recent team tournament in Amsterdam.

QUEEN'S PAWN

White—Geller (Russia)

Black—Papapavlou (Greece)

1 P-Q4	Kt-KB3	13 QxP	B-K2
2 P-QB4	P-K3	14 Q-R4	P-KR3?
3 Kt-QB3	P-Q4	15 BxP!	PxB
4 Kt-B3	P-B3	16 QxP	Q-R4
5 P-K3	QKt-Q2	17 Kt-Kt5	P-K4
6 B-Q3	B-Q3	18 B-R7ch	K-R1
7 P-K4	PxKP	19 B-K4ch	K-Kt1
8 KtxP	KtxKt	20 QR-K1	B-KKt5
9 BxKt	Kt-B3	21 R-K3	QR-Q1
10 B-B2	O-O	22 R-KKt3	R-Q5
11 O-O	P-B4	23 Kt-K6!	Resigns
12 B-Kt5	PxP		Mate is forced.

SICILIAN DEFENSE

White—Keres (Russia)

Black—Palmason (Iceland)

1 P-K4	P-QB4	15 P-Kt4	KtxB
2 Kt-K2	Kt-QB3	16 RPxKt	B-B3
3 P-Q4	PxP	17 P-Kt5	Kt-K1
4 KtxP	Kt-B3	18 Kt-Kt3	B-Q1
5 Kt-QB3	P-Q3	19 P-B6	P-Kt4
6 B-QB4	P-K3	20 P-Kt4	R-R1
7 O-O	B-K2	21 Q-R5	P-R4
8 B-K3	O-O	22 KtPxP	PxP
9 B-Kt3	P-QR3	23 PxP	K-R1
10 P-B4	B-Q2	24 R-B5	Bx8P
11 Q-B3	Q-B2	25 QR-KB1	Kt-Kt2
12 QR-Q1	QR-B1	26 Q-R6	B-Q1
13 P-B5	P-K4	27 R-R5!	Resigns
14 KKt-K2	Kt-QR4		White mates soon.