

L. A. Claims State's

By Dr. H. J. Ralston

Mrs. Sonya Graf Stevenson of Los Angeles is the first official women's chess champion of California.

Playing in an 8-round tournament in Los Angeles, Mrs. Stevenson had little difficulty in winning with the perfect score of 8-0.

Mrs. Gregor Piatigorsky of Los Angeles, wife of the celebrated cellist, and Mrs. Lena Grumette tied for second and third with scores of 6½-1½.

Experience Counts

Then followed Mrs. Frances Higgins, 4-4, Mrs. Frances Oswald and Mrs. Frances Frazier, both with 3½-4½, Mrs. Matilda Harmat, 3-5, Miss Henrietta Page, 1-7, and Mrs. Mary Shepard, 0-8.

Mrs. Stevenson's great experience in international chess play gave her an overwhelming advantage. The experience gained by the other players no doubt will make them much tougher opponents in the next tournament.

All the players are residents of Southern California. It is unfortunate that several strong women players of the San Francisco Bay Area were unable to make the trip to Los Angeles.

Leaders Named

After three rounds of play, the championship tournament of the Golden Gate Chess Club was being led by Carroll Capps, Robert Currie, and Henry Gross, all with 2½ points.

The third-round game between Currie and Gross attracted a good deal of attention, because of its likely importance in determining one of the top places.

After a very hard game, the players agreed on a draw in 45 moves. Bishops of opposite colors made a win for either player very improbable.

Young David Peizer, with 2 points, is showing himself to be a comer. In the first round he knocked over Robert Konkel, a veteran player with a world of experience.

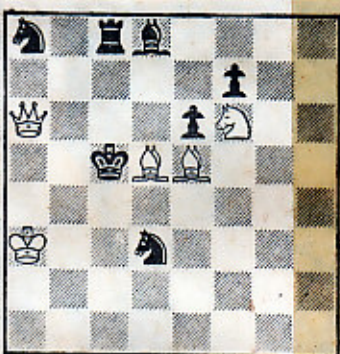
Visitors Welcome

Play in the tournament occurs at the Hotel Cecil on Tuesday evenings. Visitors are welcome.

Robert Burger of Lafayette won the Class A section of

The tournament was a 5-round "Chess Friends" with a score of 4½-½.

TASK No. 44—By John Brown
White Mates in Two Moves
(Value four points)



Answer to Task No. 43: The main line is 1. R-B1, PxR; 2. R-B5, B-K13; 3. KtxP mate.

Swiss played at the Oakland YMCA last weekend.

V. Zemitis of Berkeley was second with 4-1, and Charles Fontan third with the same game score, but with fewer tie-breaking points.

Approximately 100 players turned out for the annual tournament, which was played in three sections, graded according to strength.

The semi-annual meeting of the San Francisco Bay Area Chess League will be held Sunday, May 9, in Hotel Cecil at 7:00 p. m. All member clubs should send representatives to the meeting.

Chess Champions

We continue with games from the World Championship match between Mikhail Botvinnik and Vassily Smyslov.

After 19 games, with only 5 to go, Botvinnik was leading 10½-8½.

No. 11—RUY LOPEZ

White—Smyslov

Black—Botvinnik

1 P-K4	P-K4	22 R-Q8	P-Kt4
2 Kt-KB3	Kt-QB3	23 RxR	BxR
3 B-Kt5	P-QR3	24 B-Kt3	P-QR4
4 B-R4	Kt-B3	25 P-B3	P-B4
5 Castles	P-Q3	26 B-K5	K-B2
6 BxKtch	PxB	27 P-B4	Kt-Q3
7 P-Q4	PxP	28 Kt-R6	Kt-K1
8 KtxP	P-B4	29 K-B2	B-K5
9 Kt-KB3	B-K2	30 P-Kt3	K-Kt3
10 Kt-B3	Castles	31 K-K3	K-R4
11 R-K1	B-Kt2	32 K-Q4	K-Kt5
12 B-Kt5	P-R3	33 KxP	K-R6
13 B-R4	R-K1	34 PxP	PxP
14 P-K5	PxP	35 KtxP	KtxKt
15 RxP	QxQch	36 BxKt	KxP
16 RxQ	B-Q3	37 K-Kt5	K-R6
17 RxRch	KtxR	38 P-B4	K-Kt5
18 Kt-Q2	B-K4	39 P-B5	P-B5
19 Kt-Kt3	BxKt	40 PxP	PxP
20 Px8	P-B5	41 BxRP	Resigns
21 Kt-B5	B-B3		

No. 12—SLAY DEFENSE

White—Botvinnik

Black—Smyslov

1 P-Q4	P-Q4	20 QR-Q1	Kt-B1?
2 P-QB4	P-QB3	21 RxR	RxR
3 Kt-KB3	Kt-B3	22 P-K5	Kt-Q4
4 Kt-B3	PxP	23 KtxKt	PxKt
5 P-QR4	B-B4	24 Q-Q2	Kt-K3
6 P-K3	P-K3	25 P-B4	PxP
7 BxP	B-QKt5	26 PxP	Q-B3
8 Castles	QKt-Q2	27 P-B5	Kt-B4
9 Kt-R4	Castles	28 Q-Kt5	R-Q2
10 P-B4	B-Kt3	29 R-KKt1	P-B3
11 P-K3	P-K4	30 PxP	Kt-K5
12 KtxB	PxKt	31 P-B7ch	RxP
13 B-K3	Q-K2	32 Q-QBch	K-R2
14 Q-K2	PxP	33 BxP	Kt-B7ch
15 BxP	B-B4	34 K-Kt2	Q-B3
16 BxB	QxBch	35 QxQ	RxQ
17 K-R1	P-KKt4	36 KxKt	RxPch
18 P-KKt3	QR-Q1	37 B-B3	R-B5
19 B-R2	KR-K1	38 R-Kt4	Resigns

No. 13—SICILIAN DEFENSE

White—Smyslov

Black—Botvinnik

1 P-K4	P-QB4	21 PxKt	R-QB1
2 Kt-QB3	Kt-QB3	22 R-B2	PxP
3 P-KKt3	P-KKt3	23 PxP	K-B2
4 B-Kt2	B-Kt2	24 R-K1	KR-Q1
5 P-Q3	P-QKt3	25 Kt-K6	R-Q2
6 KKt-K2	P-Q3	26 QR-K2	R-Kt2
7 Castles	B-Kt2	27 K-Kt3	R-KKt1
8 P-B4	P-B4	28 K-R4	P-KR3
9 P-KKt4	PxKtP	29 R-KKt2	R/2-Kt1
10 P-B5	Q-Q2	30 R-QB2	R/QKt-QB1
11 Kt-B4	PxP	31 P-R4	RxR
12 PxP	B-Q5ch	32 RxR	Kt-Q4
13 K-R1	BxKt	33 R-B2	K-B3
14 Px8	Kt-K4	34 K-Kt3	P-KR4
15 Q-K2	Kt-KB3	35 K-R4	Kt-K6
16 BxB	QxBch	36 P-Q5	KtxPch
17 Q-Kt2	QxQch	37 KxP	P-R3
18 KxQ	P-B5	38 R-QKt2	Kt-K6
19 B-K3	Kt-B6	39 R-B2ch	Kt-B4
20 B-Q4	KtxB		

40 R-QKt2 P-Kt4
41 PxP PxP

Resigns

May 7, 1954