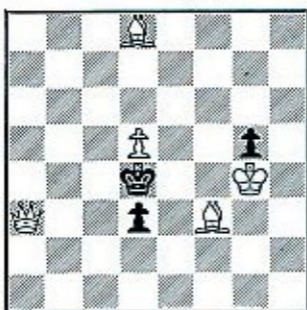


# THE CHESS PLAYER

By Dr. H. J. Ralston

## TASK No. 27—By J. Smutny



WHITE MATES IN TWO MOVES  
(Value 4 points)

Answer to Task No. 25: R-QKt4.

Answer to Task No. 27 should be post-marked not later than August 21. It is required only that White's first move be given.

**A**FTER seven rounds, D. Poliakoff of San Francisco was leading the Northern California Championship Tournament, being played at the Mechanics' Institute Chess Club in San Francisco. As we ventured to predict in an earlier column, no player in the tournament has escaped loss. With only two more rounds to go, the field had narrowed down to Poliakoff, Henry Gross, and C. M. Capps, with scores of 6-1, 5-2 and 6-2, respectively.

We continue with games from the recent United States Championship match between Larry Evans of New York and Herman Steiner of Los Angeles:

### MATCH GAME No. 8—Steilian

White—H. Steiner		Black—L. Evans	
1. P-K4	P-QB4	21. PxP	PxP
2. Kt-KB3	Kt-QB3	22. P-R4	P-K4
3. P-Q4	PxP	23. PxPe.p.	RxP
4. KtxP	Kt-B3	24. P-B5	KR-K1
5. Kt-QB3	P-Q3	25. P-R5	Q-K2
6. B-K2	P-KKt3	26. B-Q2	P-Kt4
7. O-O	B-Kt2	27. BxQKtP	BxP
8. Kt-Kt3	O-O	28. R-QKt1	B-K4
9. P-R4	P-QKt4	29. B-R5	B-QB3
10. B-B3	P-Kt5	30. B-Kt4	Q-Kt2
11. Kt-Q5	KtxKt	31. BxB	QxB
12. PxKt	Kt-R4	32. B-Q2	P-R3
13. KtxKt	QxKt	33. B-K3	R-K2
14. R-K1	R-K1	34. B-Q4	BxB
15. K-R1	B-B4	35. QxB	R-K7
16. P-Kt4	B-Q2	36. R-KKt1	Q-KB6
17. P-QR3	QR-B1	37. QxP	QRxP
18. R-K4	Q-B2	38. Q-Kt8ch	K-R2
19. R-K2	B-Kt4		Resigns
20. R-Kt2	P-QR4		

Score: Evans 6, Steiner 2.

### MATCH GAME No. 9—Tarrasch

White—L. Evans		Black—H. Steiner	
1. P-Q4	P-Q4	16. Kt-R4	B-Kt4
2. P-QB4	P-K3	17. P-Kt3	Q-Q2
3. Kt-QB3	P-QB4	18. B-K3	KtxBeh
4. PxQP	KPxP	19. PxKt	Q-R6
5. Kt-B3	Kt-QB3	20. R-B1	R-Q1
6. P-KKt3	Kt-B3	21. Q-B2	B-Q6
7. B-Kt2	B-K2	22. Q-B6	B-K5!
8. O-O	O-O	23. PxB	Kt-Kt5
9. PxP	P-Q5	24. KR-K1	QxRPch
10. Kt-QR4	P-QKt4	25. K-B1	Kt-K4??
11. PxPe.p.	PxP	25 . . R-Q7!!	wins
12. KtxQP	KtxKt	26. Q-B2	
13. BxR	B-R3		Drawn by perpetual check.
14. B-B3	P-QKt4		
15. Kt-B3	P-Kt5		

Score: Evans 6½, Steiner 2½.