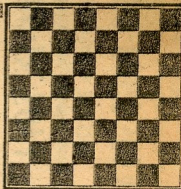


chess

by richard shorman



Black's calculation that his opponent will be caught off balance by an opening gambit and lose his way among a welter of complications proves correct.

White: Fred Crofut Sr.

Black: Fred Galvin.

Oakland Open, June 22, 1968.

USCF Open Division.

Ruy Lopez

1 P-K4	P-K4	14 Q-R7ch	B-N2
2 N-KB3	N-QB3	15 B-B4	N-B3
3 B-N5	P-B4(a)	16 Q-R4	B-N5
4 N-B3(b)	PxP	17 K-Q2	Q-B6(f)
5 QNxP	P-Q4	18 B-B4ch	N-Q4
6 NxP	PxN	19 B-K3	R-R1
7 NxN	Q-N4(c)	20 Q-N5	Q-B4
8 N-K5ch(d)	P-B3	21 R-KN1	QxQ
9 P-Q4	QxP	22 BxQ	B-B6
10 B-B1(e)	QxR	23 B-K3	RxP
11 Q-R5ch	P-N3	24 R-N5(g)	B-R3
12 NxNP	PxN	25 BxNch	PxB
13 QxR	K-B2	26 Resigns	

(a) Schliemann's Defense, Black's most dynamic attempt to cross the dreaded Ruy Lopez.

(b) Best. White has problems after 4 PxP P-K5, e.g., 5 Q-K2 Q-K2 6 BxN NPxB 7 N-Q4 N-B3 8 N-QB3 P-B4 9 N-N3 P-Q4 10 Q-N5ch Q-Q2 11 Q-R5 Q-B3 12 N-R4 R-QN1! (Sily — Bronstein, Moscow vs. Budapest, 1949).

(c) Sounder but less aggressive is 7 . . . Q-Q5 8 P-QB4 Q-Q3 9Q-R5ch (or 9 NxPch B-Q2 10 BxBch QxB 11 N-N5 N-B3 12 0-0 B-B4!, with counterplay) P-N3 10 Q-K5ch QxQ 11 NxQch P-B3 12 B-R4 (12 NxBP? P-QR3!) B-N2 13 P-Q4! PxPe.p. 14 B-B4, although here, too, Black is hard pressed to maintain the balance.

White's Knight is poison: 7 . . . PxN? 8 BxPch B-Q2 9 Q-R5ch K-K2 10 Q-K5ch B-K3 11 P-KB4!

(d) Surprisingly enough, the losing move. Guaranteed better is 8 Q-K2!, e.g., 8 . . . N-B3 (8 . . . QxNP? 9 Q-R5ch) 9 P-KB4 QxBP 10 NxPch K-Q1 11 NxB KxN 12 P-Q4 Q-B4 13 B-QB4 B-Q3 14 R-B1 Q-R4ch 15 B-Q2 Q-N3 16 0-0-0!, with a clear plus for White (Suchko — Myasnikov, USSR, 1962).

(e) White has to lose something, but Black must repulse an attack before the extra material counts. What follows is mostly forced.

(f) White's offensive has run its course. Black moves in for the kill.

(g) Even without this gesture Black wins easily a piece up.

★ ★ ★

CCCA CONTRA COSTA OPEN

The Concord Chess Club will stage a five-round Swiss system tournament Saturday and Sunday, Aug. 10-11, at the Concord Recreation Center, 2974 Salvio St., for the Contra Costa Open Chess Championships. The USCF section will be run as an open tourney with 100 per cent of the entry fees, minus expenses, returned to the players in four cash prizes: 1st overall, 35 per cent plus title plus trophy; 1st "A", 25 per cent; 1st "B," 20 per cent; 1st "C," 20 per cent. CCCA sections will be held as class tournaments with a minimum of two trophies to be awarded plus a trophy for the Junior event. Entry fee for the USCF section is \$6 and USCF membership, for the CCCA sections, \$3 plus membership in a CCCA affiliated club. Juniors (under 14) play for only \$2. Bill Clipson and Jerry Long will direct. Round one starts at 12:30 p.m., Saturday afternoon, Aug. 10.

★ ★ ★

RAPID TRANSIT TOURNAMENT

The Hayward Chess Club, 2058 D St., will conduct a rapid transit tournament (10 seconds a move) Monday, Aug. 12, at 8 p.m. Entry fee is only 35 cents. Monthly winner receives a certificate, annual winner a trophy.