

# CHESS

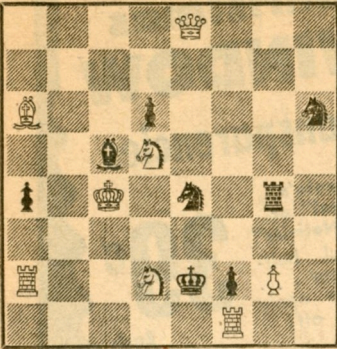
BY HERMAN STEINER  
FORMER UNITED STATES CHAMPION  
Address letters to Chess Editor, L.A. Times,  
Los Angeles 53, Calif.

Dec. 20, 1953

TIMES PROBLEM 2505

BY H. E. AND J. BETTMANN

BLACK 8



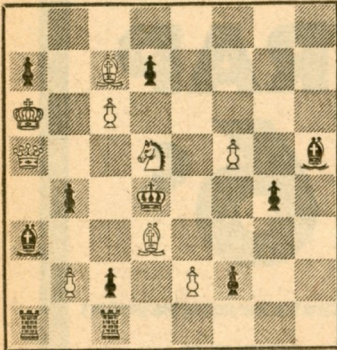
WHITE 8

White mates in two.

TIMES PROBLEM 2506

BY H. JONSSON

BLACK 11



WHITE 9

White mates in three.

SOLUTION TO PROBLEM 2501: Q-N.  
SOLUTION TO PROBLEM 2502: Q-R.

We received solutions from: C. B. Collins, D. Kopec, P. V. Nielsen, W. C. Everett, Y. V. Oganosov, A. P. Berthold, D. M. Fehling, J. P. Walsh, C. P. Ford, J. J. Adams, E. E. Hetherington, C. J. Gibbs, Toscha Seidel, M. Morris, J. H. Gordon, W. B. Tudor, J. G. Scripps, B. McGuire, C. G. Taber, N. Lesser, T. Rothman, J. Elliott, K. Chambers, Dr. J. A. Healy, R. Sinnott, P. Martin, J. Kaufman, S. R. Leopold, J. C. Dickson, N. Copinof, L. Harvey, C. T. Tongko, W. G. Fox, L. A. Victor, S. W. Nay, R. Lorber, R. E. Cunningham, C. Foster.

### SEASON'S GREETINGS

Your editor wishes to extend to all his readers the season's greetings and best wishes.

### RAPID TRANSIT WINNERS

The weekly Wednesday evening Rapid Transit Tournament played in the Hollywood Chess Group quarters, 108 N Formosa Ave., was won by Jack Moskowitz, formerly of New York City, who now makes his home in Los Angeles. He won 17 and lost only to Louis Spinner. Second and third prize was divided between Irving Rivise and Louis Spinner, 14½-3½; fourth went to 15-year-old J. R. Lazos, 14-4. The tournament is open to anyone interested. For information call Webster 1-8817 or WYoming 3510 or visit the group. Open evenings and Saturday and Sunday afternoons.

### JUNIOR TOURNAMENT

The Hollywood Chess Group, 108 N Formosa Ave., will be the scene of the first Southern California Junior Championship, beginning at 1 p.m. today. The tournament is open to all youths under 21 years of age. Entrance fee is \$1. Prizes will be given to winners. Games will be played daily and visitors are welcome.

### HOLLYWOOD CHESS GROUP CHAMPIONSHIP

Your editor won the Hollywood Chess Group Championship with a score of 9-1; second place went to Irving Rivise with 8½-1½; third to Steve Mazner with 7½-2½; fourth to Eugene Levin with 7-3; fifth to Robert Jacobs, who tied, 6½-3½, with John Alexander because of the Sonnenborn Berger system of breaking ties. Complete standings of players will be published next Sunday.

Tenth and final-round results:

Steiner ½; Geller ½; Mazner ½; Levin ½; Woronzoff 0; Rivise 1; Jacobs 1; Banner 0; Zelig 0; Alexander 1; Goehler ½; Mrs. Roos ½; Johanson ½; Karpilowsky ½; Sleep 0; Mrs. Grumette 1; Blumenfeld 1; Wolf 0; Mrs. Henderson 0; Henderson 1; Mrs. Piatigorsky 1; Dr. Burns 0; Maron vs. Harari; Wheeler vs. Shearer, and Bakst vs. Gardner was adjourned. Kleinberg had the bye.

### VAN NUYS BESTS COMPTON COLLEGE

The Van Nuys Chess Club played its last interclub match of the season in a 10-board match against Compton College, winning with a score of 6½-3½.

### NEW CHESS CLUBS FORMED

A new chess club is being formed in the Riverside area. The initial meeting will be held Jan. 4 at 8 p.m. The place is Shanel Park Recreation Center, on the second floor. The club will meet twice a month. For further information contact W. C. Davis at Riverside 9947W.

A new club recently formed is called Long Beach Douglas Aircraft-Lakewood Chess Club. It has a strong eight-man B team and would welcome matches with clubs of that strength. The players meet at Pan-American Park from 7 to 10 p.m. on Tuesdays. The president is Richard Batchelder and secretary is J. C. Beardsley. For further information write Beardsley at 4727 Fidler, Long Beach.

### FAIRFAX HIGH WINS VALLEY LEAGUE

Fairfax High Chess Club, still unbeaten, won the Valley League Tournament by defeating John Burroughs High with a score of 4-2. Roland Goetze is sponsor of the winning team. This was the last game of the season.

### COUNTY LEAGUE TO MEET

The Los Angeles County Chess League will hold its annual meeting Tuesday, Jan. 5, at 8 p.m. at the headquarters of the Hollywood Chess Group, 108 N Formosa Ave. Plans for the 1954 activities will be discussed and all clubs and groups should be represented.

### CANDIDATES TOURNAMENT GAMES

The following games are from the World Champion Candidates Tournament concluding last October in Zurich, Switzerland.

### CATALAN OPENING

Keres White	Kotov Black	Keres White	Kotov Black
1-P-Q4	N-KB3	29-B-Q4	R-Q2
2-P-QB4	P-K3	30-R(2)-N2	P-K4
3-P-KN3	P-Q4	31-BxN	BxB
4-B-N2	B-K2	32-R-B2	R-B2
5-N-KB3	O-O	33-P-K4	K-K3
6-O-O	P-B3	34-K-B	B-Q5
7-P-N3	QN-Q2	35-P-B3	P-B6
8-B-N2	P-QN3	36-K-K2	R-B2
9-QN-Q2	B-N2	37-R-KB	K-Q3
10-R-B	R-B	38-Q-Q3	K-B4
11-P-K3	P-B4	39-R-K2	R-QN2
12-Q-K2	PxQP	40-P-B4	PxP
13-N-NxP	N-B4	41-RxP	R-Q2
14-KR-Q	Q-Q2	42-K-B2	K-Q4
15-N(2)-B3	KR-Q	43-R(1)-K	R-QN2
16-N-K5	Q-K	44-K-B	R-N7
17-PxP	BxP	45-R(4)-K2	P-K5
18-N(4)-B6	RxN	46-RxP	RxP
19-NxR	QxN	47-P-N4	R-KN7
20-BxB	PxB	48-P-B5	PxP
21-P-P-QN4		49-PxP	R-B7
	N(3)-K5	50-R-K7	K-B5
22-PxN	PxP	51-R(1)-K4	K-Q6
23-Q-N4	P-N3	52-RxBch	KxR
24-P-KR4	Q-K3	53-RxKRP	P-R4
25-QxQ	PxQ	54-R-Q7ch	K-K5
26-B-K5	P-B5	55-P-R5	RxP
27-R-B2	N-B4	56-P-R6	R-R5
28-R-N	K-B2	57-Draw agreed	

### KING'S INDIAN DEFENSE

Szabo White	Gligoric Black	Szabo White	Gligoric Black
1-P-QB4	N-KB3	38-R(1)-K	R-Q2
2-P-KN3	P-KN3	39-R-QB	N-Q6
3-B-N2	B-N2	40-R-B	N-K4
4-P-K4	P-Q3	41-R-B	N-Q6
5-N-K2	O-O	42-R-B8	N-K4
6-O-O	P-B4	43-BxN	PxB
7-QN-B3	N-B3	44-RxP	K-B3
8-P-Q3	B-Q2	45-R-K3	K-N4
9-P-KR3	N-K	46-R-B5	R-N
10-P-KN4	N-B2	47-K-B2	P-KR4
11-P-B4	R-N	48-R-N3ch	K-R3
12-P-B5	P-QN4	49-P-KR4	R-KB
13-NxP	NxN	50-R-KB3	R(1)-B2
14-PxN	RxP	51-R-R5	R-B2
15-N-B3	R-N	52-K-N3	R-B5
16-P-N5	N-K4	53-B-R3	R-KN2
17-N-Q5	P-K3	54-P-Q6	R-Q5
18-P-B6	PxN	55-BxB	PxBch
19-PxB	KxP	56-K-B2	P-B5
20-P-Q4	PxQP	57-R-R6	K-N3
21-QxP	Q-N3	58-P-Q7ch	K-B4
22-QxQ	RxQ	59-RxP	R-Q7ch
23-PxP	B-B4	60-K-K	R(2)-KN7
24-P-N3	P-B3	61-P-Q8(Q)	RxQ
25-B-K3	R-N2	62-R-B7ch	K-K4
26-PxPch	KxP	63-R(3)xP	R-QR7
27-QR-B	R-K	64-R-B3	R(1)-Q7
28-R-B3	R(2)-K2	65-R-B2	RxR
29-B-Q4	K-N4	66-RxR	RxP
30-R-N3ch	K-B3	67-R-KN2	R-R8ch
31-B-K4	R-KB2	68-K-B2	R-R7ch
32-R-QB3	K-N2	69-K-N	R-R8ch
33-B-N2	K-B	70-K-B2	R-R7ch
34-P-N4	R-N	71-K-N	R-R8ch
35-P-R3	R-N4	72-K-R2	R-QN8
36-R-Q	R-K2	73-R-N5ch	K-B5
37-R-K3	K-B2	74-P-N5	K-B6
			Draw agreed

### DUTCH DEFENSE

Euwe White	Bronstein Black	Euwe White	Bronstein Black
1-P-Q4	P-K3	15-PxP	PxP
2-P-QB4	P-KB4	16-B-K3	QR-Q
3-P-KN3	N-KB3	17-B-B5	KR-K
4-B-N2	B-K2	18-B-Q5ch	K-R
5-N-KB3	O-O	19-Q-R5	QxQ
6-O-O	P-Q3	20-RxQ	P-KN3
7-N-QB3	Q-K	21-RxB	PxR
8-R-K	Q-N3	22-B-B7	R-K2
9-P-K4	NxP	23-BxR	NxB
10-NxN	PxN	24-B-R5	N-B3
11-RxP	P-K4	25-Q-Q	N-Q5
12-Q-K2	B-N5	26-R-K	P-K5
13-N-R4	BxN	27-P-B3	N-B7
14-RxB	N-B3	28-R-QB	Draw agreed

### QUEEN'S GAMBIT (Tarrasch Defense)

Geller White	Keres Black	Geller White	Keres Black
1-P-Q4	N-KB3	15-B-BR4	N-K5
2-P-QB4	P-K3	16-B-N3	NxN
3-N-QB3	P-Q4	17-PxN	B-B3
4-N-B3	P-B4	18-QxRch	QxQ
5-PxQP	BPxP	19-RxQch	RxR
6-QxP	PxP	20-RxP	R-QB
7-P-K4	N-B3	21-R-Q3	N-N5
8-B-QN5	NxP	22-R-K3	NxP
9-O-O	N-B3	23-P-R3	BxN
10-R-Kch	B-K2	24-PxB	NxP
11-Q-K5	O-O	25-B-Q7	R-Q
12-Q-K2	R-K	26-B-B5	P-KN3
13-B-N5	B-KN5	27-B-Q3	N-Q
14-QR-Q	P-KR3	28-Resigns	