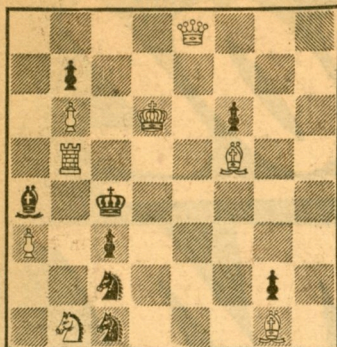


CHESS

BY HERMAN STEINER

FORMER UNITED STATES CHAMPION
Address letters to Chess Editor, L.A. Times
Los Angeles 53, Cal.

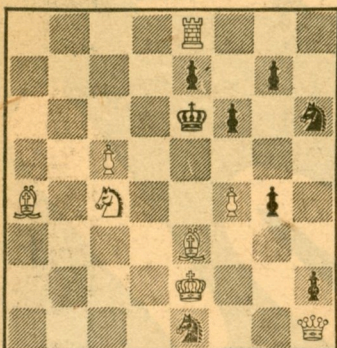
April 25, 1954
TIMES PROBLEM 2541
BY P. F. BLAKE (1st Pr.)
BLACK 8



WHITE 8

White mates in two.

TIMES PROBLEM 2542
BY A. W. MALMSROM
BLACK 8



WHITE 8

White mates in three.

SOLUTION TO PROBLEM 2537: Q-B2.
SOLUTION TO PROBLEM 2538: N-R5.

We received solutions from: C. C. Carr, D. A. Keresey, J. P. Walsh, C. F. Day, N. Lesser, J. Seelig, J. G. Scripps, P. V. Nielsen, D. M. Fehling, R. S. Erickson, C. G. Taber, G. W. Mishler, W. B. Tudor, Dr. M. Tosan, G. Sharman, K. Chambers, D. C. Bransby, S. Myzel, J. J. Adams, B. McGuire, A. P. Berthold, E. E. Hetherington, T. Rothman, G. Comroe, T. T. Seidel, C. P. Ford, C. Huffman, L. B. Rotter, D. Kopec, A. Landry, J. Munson, C. B. Collins, W. C. Everett, M. Morris, L. A. Victor, C. T. Tongko, S. W. Nay, J. C. Dickson, D. and E. Busch, W. S. Lawrence, Dr. J. A. Healy, J. Kaufman, L. Harvey, R. Sinnott, R. Lowmaster, H. Baright, K. J. Hartman, G. A. Boutin, J. Davidson and W. M. Shuman.

HERMAN STEINER EXHIBITION

Your editor, former United States champion and international chess master, will give a simultaneous exhibition against all comers next Sunday at 7 p.m. at the Jewish Community Center, 5870 W Olympic Blvd. The public is cordially invited. Take your set and board. For further information call the Center. Make your reservation to play early.

SOUTH VS. NORTH MATCH

The annual South vs. North match scheduled for the week end of May 29 to 31 will be played in San Luis Obispo. Participants are requested to make application for place on the team as soon as possible. Transportation will be supplied for those who have none. Write your editor, care of this column. For further information call Webster 18817 or WYoming 3510. Let's get behind our team this year. There will be a minimum of 50 boards.

LATVIANS VS. LOS FELIZ

Six Latvian chess players, captained by Robert Rupeiks, will meet the Los Feliz Chess Club across six boards at the Hollywood YMCA, Selma and Hudson Aves., Tuesday at 7:30 p.m. Visitors are welcome.

NEW MONTHLY BULLETIN

The Los Angeles County Chess League will publish a monthly news bulletin, to be distributed free of charge to the members of the clubs comprising the County League. Copies of this bulletin, to the extent that the supply permits, will also be sent to other interested chess players within a 50-mile radius of Los Angeles.

The bulletin will contain news of the individual clubs and carry items of interest to the local chess players. This bulletin will supplement the material that is presently carried in the local newspapers which, due to space limitations, cannot give the details of individual club activities to the extent that the bulletin can.

Anyone wishing to receive this bulletin should drop a postcard to your editor, care of this column, giving name and mailing address, and also indicate whether you are a member of one of the clubs of the county Chess League and, if so, give the name of the club.

The first bulletin will be issued on approximately May 1.

BOROCHOW SIMULTANEOUS

Harry Borocho, former California State chess champion, will play all comers simultaneously on Wednesday, May 5, at 8 p.m., at the City Terrace Cultural Center Chess Club, 3875 City Terrace Drive.

This exhibition is one of a series by local chess masters for the purpose of raising funds for the forthcoming Pan-American Chess Congress to be played at the Hollywood Athletic Club July 10 to 24.

Any player who wins from Borocho will get a pass for one session of the Chess Congress. Players should take their own chess sets. Visitors are welcome.

RAPID TRANSIT WINNERS

The weekly Wednesday evening Rapid Transit Tournament at the Hollywood Chess Group, 108 N Formosa Ave., was won by J. Moskowitz with a fine score of 20-1, second place went to R. W. Banner, 17-4; third to J. Rupieiks, 16-5; fourth to H. Rogosin, 15 1/2-5 1/2; fifth to J. R. Lazos, 14 1/2-6 1/2. The tournament is open to anyone. For further information call Webster 18817 or WYoming 3510. The headquarters of the Hollywood Chess Group is open nightly, Saturday and Sunday afternoons. Visitors are welcome.

COUNTY LEAGUE TEAM MATCH RESULTS

Last week the Los Angeles County League began its annual team competition. Eight teams from the B group participated. The first round ended with the following results: Hollywood, 2 1/2; North American, 3 1/2; Inglewood, 3 1/2; Valley, 2 1/2; Water & Power, 1; Beverly Hills, 5; Santa Monica, 1 1/2; Cosmo, 4 1/2.

Six teams are entered in the A group: Hollywood vs. Inglewood, Long Beach vs. Pasadena, Santa Monica vs. Van Nuys.

SANTA MONICA BAY AREA CHAMPIONSHIP

The Santa Monica Bay Area Championship began last week at the Santa Monica Chess Club, in Lincoln Park, Wilshire and Santa Monica Blvds. Games are played every Monday at 7:30 p.m. First-round results: Cross, 1, Hurlbut, 0; Abel, 1; Cherestess, 0; Wrangel, 1; Wentcher, 0; Shank, 1, Anderson, 0; Keckhut vs. Holmes and Henderson vs. Budd, adjourned.

The annual Muscle Beach Tournament will start Saturday, June 12, at 1:30 p.m. Please contact H. T. Abel, 1641 Ocean Front, Santa Monica.

HIGH SCHOOL TOURNAMENT

Washington High School is host this year to the third annual Los Angeles City High School Chess Tournament. It will be held Saturday, May 15, from 9 a.m. to 5 p.m. The event is being sponsored jointly by the Youth Services Section of the Los Angeles City Schools and the Los Angeles County Chess League. John Keckhut, of the league, will be in charge of the play. A. H. Herzog is tournament manager.

CALIFORNIA LADIES' CHAMPIONSHIP

Mrs. Sonya Graf Stevenson leads the California Ladies' Championship Tournament with a 5-0 score. The tournament started April 19 and is being played at the headquarters of the Hollywood Chess Group, 108 N Formosa Ave., every evening. In second place is Mrs. Matilda Harmat with 3-1, then Mrs. Frances Higgins, 3-4; Mrs. Gregor Platigorsky, 2 1/2-1 1/2; Mrs. Lena Grumet, 1 1/2-1 1/2; Mrs. Frances Frazier, 1 1/2-1 1/2; Miss Frances Oswald, 1 1/2-3 1/2; Mrs. Mary Sheppard, 0-1; Miss Henrietta Page, 0-4. The tournament will be concluded next Friday.

SECOND PAN-AMERICAN OPEN CHESS TOURNAMENT

The committee for the second Pan-American International Open Chess Tournament to be played at the Hollywood Athletic Club, 6525 Sunset Blvd., July 10-24 inclusive, has agreed to the following prizes and rules:

PRIZE LIST FOR MASTERS: First, \$1000; second, \$750; third, \$500; fourth, \$400; fifth, \$300; sixth, \$250; seventh, \$200; eighth, \$150; ninth, \$100; tenth, \$50; totaling \$3700.

MASTER CANDIDATES: First, \$150; second, \$100; third, \$75; fourth, \$50; fifth, \$25; totaling \$400.

CLASS A, B, C and D: Cups and chess merchandise totaling \$300.

LADIES: Two cups, \$50.

QUALIFICATION OF PLAYERS:
Section 1: Recognized and qualified master players with U.S. Chess Federation ratings of not less than 2200 or equivalent ratings with other organizations.

Section 2: Master candidates for players with USCF ratings from 2000 to 2299 inclusive or equivalent.

Section 3: Group A players having USCF ratings from 1800 to 2099 inclusive or equivalent.

Section 4: Group B players having USCF ratings from 1600 to 1899 inclusive or equivalent.

Section 5: Group C players having USCF ratings from 1400 to 1699 inclusive or equivalent.

Section 6: Group D players having USCF ratings lower than 1499.

For players not rated by USCF, California Chess Federation ratings will be used. For players not having recent ratings a committee consisting of Dr. H. J. Ralston, John Keckhut, Neil T. Austin and Francis Crofut has been appointed to determine players' eligibility for the different groups. Entry fee of \$15 must be enclosed with all registrations.

For further information write to the Hollywood Chess Group, 108 N Formosa Ave., Los Angeles 36, or call Webster 18817 or WYoming 3510.

BOTVINNIK TAKES LEAD

With almost two-thirds of the match gone, Mikhail Botvinnik, world champion, held an 8-7 lead in his chess match with Vassily Smyslov of Moscow last week.

The defender again had the black pieces in the 15th game of the series of 24. Botvinnik resorted to the Sicilian Defense and this time pursued the line based on 6... P-K4, instead of fianchettoing his queen's bishop.

Smyslov played aggressively, but by the 17th move he had the inferior position. There was a spirited interchange of complications and, under time pressure, Smyslov lost a pawn. Establishing two united passed pawns, Botvinnik won in 36 moves. It was his sixth victory, Smyslov having won five and drawn four.

In the 16th game Botvinnik played the white pieces against Smyslov's King's Indian Defense and wound up with an advantage after 41 moves.

The play took a favorable turn for Botvinnik when he obtained control of the queen's file. Smyslov played rapidly, but was on the point of losing an important pawn when the game was adjourned. Botvinnik was then favored to win.

In the 14th game Smyslov demonstrated convincingly the power of three minor pieces opposed to a queen. Smyslov, having sacrificed his queen to obtain control of the long diagonal, posted his forces so effectively that the position, when the champion resigned, presented a picture of complete frustration for the white chess army.

Here are white moves from the match:

Fourth Game			
BOTVINNIK		SMYSLOV	
White	Black	White	Black
1-P-Q4	P-Q4	32-B-QB	Kt-Q2
2-P-QB4	PxP	33-B-Kt2	R-K
3-Kt-KB3	P-QR3	34-Q-B	Q-R4
4-P-K3	B-Kt5	35-Q-Kt2	Q-R3
5-BxP	P-K3	36-R-Kt5	P-Kt3
6-Q-Kt3	BxKt3	37-Q-B	B-Kt2
7-PxB	P-QKt4	38-B-B	B-B3
8-B-K2	Kt-Q2	39-KR-Kt4	B-K2
9-P-QR4	P-Kt5	40-B-Q2	Kt-B3
10-Kt-Q2	KKt-B3	41-KR-Kt2	R-Q2
11-Kt-K4	P-B4	42-BxRP	R-R2
12-KtxKtch	QxKt	43-B-Kt5	R-KKt
13-P-Q5	PxKt	44-P-R6	P-Kt4
14-P-K4	B-Q3	45-Q-Q3	B-Q3
15-P-R5	Castles	46-Q-K2 R(2)	KKt2
16-B-K3	P-B5	47-Q-Q	Q-R5
17-QxBP	KR-B	48-B-K2	P-Kt5
18-Q-Kt3	Q-Kt3	49-B-K	P-R4
19-K-B	P-B4	50-PxP	PxP
20-R-KKt	Q-R4	51-KBxP	RxB
21-R-Kt2	Kt-B5	52-P-B3	RxR
22-Q-Q	Q-R5	53-BxQ	RxRch
23-K-Kt	P-B5	54-QxR	RxQch
24-B-Q2	QR-Kt	55-KxR	Kt-K
25-Q-R	R-B	56-P-R7	Kt-B2
26-B-B4	R-B3	57-K-B	K-Kt2
27-Q-KKt	B-B	58-K-K2	K-B2
28-R-Kt4	Q-R4	59-B-B2	K-K
29-Q-Kt2	Q-B2	60-K-Q3	K-Q2
30-P-Kt3	K-R	61-K-B4	Resigns.
31-R-KKt	R-Q3		

Fifth Game			
SMYSLOV		BOTVINNIK	
White	Black	White	Black
1-P-QB4	P-QB3	22-BxRP	P-B4
2-P-Q4	P-Q4	23-R-Kt	BxB
3-Kt-KB3	Kt-KB3	24-B-Kt8ch	B-K3
4-Kt-B3	P-K3	25-KxB	B-R3
5-B-Kt5	PxP	26-P-B4	P-K4
6-P-K4	P-QKt4	27-P-QR4	PxP
7-P-K5	P-KR3	28-PxP	P-B6
8-B-R4	P-Kt4	29-KtxP	BxP
9-KtxKtP	PxKt	30-BxB	KtxBch
10-QxBP	QKt-Q2	31-K-Kt3	Kt-R4ch
11-PxKt	B-QKt2	32-K-Kt4	KtxPch
12-P-KKt3	Q-Kt3	33-K-Kt5	Kt-Q4
13-B-Kt2	Castles	34-KtxKt	KxKt
14-Castles	Kt-K4	35-P-R4	P-B3ch
15-Q-K2	QxP	36-K-Kt4	P-B5
16-B-K3	Q-Q6	37-P-QR5	P-B6
17-KR-Q	QxQ	38-P-R6	R-R
18-RxRch	KxR	39-K-B5	RxP
19-KtxQ	Kt-Q6	40-P-R5	R-R7
20-P-Kt3	K-B2	41-KxP	Drawn
21-PxP	PxP		

Eighth Game			
BOTVINNIK		SMYSLOV	
White	Black	White	Black
1-P-Q4	P-Q4	27-R-Kt7	B-K2
2-Kt-KB3	B-B4	28-Kt-R5	B-Q3
3-P-B4	P-K3	29-P-K4	B-B
4-Q-Kt3	Kt-QB3	30-P-B3	Kt-Kt3
5-B-Q2	PxP	31-RxR	R-Kt
6-QxKtP	KKt-K2	32-Kt-Kt3	Kt-R5
7-Q-Kt5	QR-Kt	33-R-Kt7	R-R
8-Q-R4	RxP	34-P-R7	B-K2
9-Kt-R3	Q-Q2	35-K-K3	K-B
10-KtxP	R-QKt	36-Kt-R5	K-Q2
11-P-K3	Kt-Kt5	37-P-Kt3	Kt-Kt3
12-QxQch	KxQ	38-Kt-Kt3	K-B
13-BxKt	RxB	39-R-Kt8ch	RxR
14-QKt-Q5ch	K-K3	40-PxR(Q)	KxQ
15-B-K3	P-KB3	41-Kt(Kt3)-B5	
16-BxB	KtB		P-K4
17-Kt-Q3	R-Kt3	42-PxP	PxP
18-K-K2	B-R6	43-P-B4	Kt-B5ch
19-Kt-Q2	Kt-Q3	44-K-B3	PxP
20-KR-QKt	Kt-B	45-PxP	P-Kt3
21-Kt-QB4	RxR	46-P-K5	P-B3
22-RxR	B-K2	47-Kt-Kt3	K-B2
23-R-Kt8	K-Q	48-K-K4	K-Kt3
24-P-QR4	R-K	49-P-B5	PxPch
25-P-R5	K-Q2	50-KxP	Kt-K6ch
26-P-R6	B-B		Drawn.