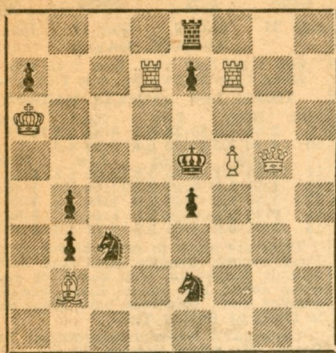


CHESS

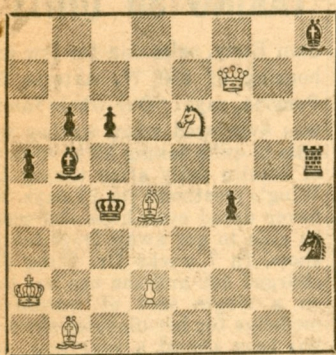
BY HERMAN STEINER
FORMER UNITED STATES CHAMPION
Address letters to Chess Editor, L.A. Times
Los Angeles 53, Cal.

May 9, 1954
TIMES PROBLEM 2545
BY A. WATERHOUSE
BLACK 9



WHITE 6
White mates in two.

TIMES PROBLEM 2546
BY A. W. MALMSTROM
BLACK 9



WHITE 6
White mates in three.

SOLUTION TO PROBLEM 2541: Q-R5.
SOLUTION TO PROBLEM 2542: B-N3.

We received solutions from: T. Rothman, J. G. Scripps, G. Comroe, K. Chambers, W. C. Everett, G. Sharon, D. M. Fehling, Toscha Seidel, D. C. Bransby, J. J. Adams, P. V. Nielsen, C. B. Collins, N. Lesser, E. E. Hetherington (please send address), L. Harvey, T. Rothschild, J. C. Dickson, K. J. Hartman, C. P. Ford, J. Kaufman, C. T. Tongko, L. A. Victor, S. W. Nay, Dr. J. A. Healy, B. McQuire, J. Munson, S. Sheridan, J. P. Walsh, C. G. Tabor, J. Davidson, L. Barone.

RAPID TRANSIT WINNERS

The Wednesday evening Rapid Transit Tournament at the Hollywood Chess Club, 108 N Formosa Ave., was won by I. Rivise. Second place went to R. W. Banner; third, J. R. Lazos, and fourth, S. Almgren. The tournament is open to anyone. For further information call Webster 18817 or Wyoming 3510. The headquarters of the Hollywood Chess Club is open nightly, Saturday and Sunday afternoons. Visitors are welcome.

KOLTANOWSKI'S SIMULTANEOUS EXHIBITION

George Koltanowski, international master, will give a simultaneous exhibition against all comers next Sunday at 7 p.m. at the Jewish Community Center, 5870 W Olympic Blvd. The public is cordially invited. Take your set and board. For further information and reservation call Webster 82531. Nathan Hurvitz, educational director, is in charge.

TEAM MATCHES

Following are the results of the Los Angeles County Chess League's team matches (second round):

A Group—Hollywood 2, Pasadena 2; Santa Monica 2½, Long Beach 1½; Inglewood 1, Van Nuys 3.

Standing of clubs after two rounds of play:

	Matches		Games	
	W	L	W	L
Santa Monica	2	0	5	3
Hollywood	1½	½	6	2
Van Nuys	1	1	4½	3½
Long Beach	1	1	4	4
Pasadena	0	1½	3½	4½
Inglewood	½	2	1	7

B Group—Third-round results, Hollywood 4½, Beverly Hills 1½; Inglewood 4½, Cosmopolitan 1½; Santa Monica 6, Water & Power 0; North American 4, Valley 2.

Standing of clubs after three rounds of play:

	Matches		Games	
	W	L	W	L
Santa Monica	2	1	12½	5½
Hollywood	2	1	11	7
Cosmopolitan	2	1	10½	7½
Inglewood	2	1	10	8
Beverly Hills	2	1	8½	9½
North American	0	3	6½	11½
Valley	0	3	4	14
Water & Power	0	3	4	14

SANTA MONICA AREA CHAMPIONSHIP

After three rounds of play Charles Henderson leads with a perfect score of 3-0 in the Santa Monica Bay Area Championship Tournament.

Standing of players after three rounds of play:

	W	L		W	L
	Henderson	3		0	Wrangell
Keckhut	2	0	Budd	1	1
Abel	2	1	Holmes	1	2
Cross	2	1	Cherestes	1	2
Shank	2	1	Henderson	0	3
Wentcher	2	1	Hurlbut	0	3

Games are being played at the Santa Monica Chess Club in Lincoln Park, 7th St. and Wilshire Blvd., in Santa Monica, Monday evenings.

U.S. CHAMPIONSHIP TOURNAMENT

We recently received a mimeographed announcement of the U.S. Championship Tournament to be conducted by the U.S. Chess Federation at the Marshall Chess Club, New York, from May 29 to June 13. This tournament has been designated as the World's Championship Zonal Qualifying Tournament of the International Chess Federation (FIDE).

In accordance with the resolution adopted by the USCF board of directors at Milwaukee last year, the following players have qualified: The three from the 1951 U.S. Championship, Evans, Reshevsky, Pavey; five from the U.S. Open, 1953, Hearst, Horowitz, Rossolimo, Byrne, Sheridan; six from the Philadelphia Candidates Tournament, Bisquier, Berliner, Burger, Brandts, Di Camillo and Wachs. According to Averi Powers, chess columnist of the Milwaukee Journal, "It is doubtful that Samuel Reshevsky will enter the meet because of the limited prize fund."

There is a question in the mind of your editor whether this tournament can legally be designated as a qualifying zonal of the FIDE because the participants of this tournament are limited to qualification and this appears to be an afterthought and not in accordance with FIDE rules. There are many qualified

players in the United States automatically eliminated by this ruling. We are sure the chess playing public would like to know why an international zonal tournament, governed by the FIDE, should not be open to all qualified players and why the USCF restricts it to only 14 participants who qualified for the U.S. Championship!

SIMULTANEOUS RESULTS

Last Sunday your editor was guest of the Jewish Community Center, 5870 W Olympic Blvd., where he gave a simultaneous exhibition against 27, winning 25 and drawing 2 against Norman Davidson and Thomas Baraquet. H. Rogosin was the referee.

Harry Borocho, former California State champion, played against 14 last Wednesday at the City Terrace Cultural Center Chess Club, 3875 City Terrace Drive, winning 13 and drawing 1 against Dr. Sol Davis.

BOROCHOW-ALMGREN MATCH

The four-game match played by Sven Almgren, Los Angeles County champion, and Harry Borocho, former California State champion, was won by the latter, with a 3-1 score. Below is a game from the match.

FRENCH DEFENSE

Borocho	Almgren	Borocho	Almgren
White	Black	White	Black
1-P-K4	P-K3	14-QR-Q	Q-Q2
2-P-Q4	P-Q4	15-P-R5	P-QN4
3-N-QB3	N-KB3	16-P-R6	P-N3
4-B-KN5	B-K2	17-N-K2	N-QR3
6-P-K5	N-N(a)	18-N-B4	N-B2
6-P-KR4	P-QN3(b)	19-NxNP1	PxN
7-Q-N4	P-KB3	20-P-R7	K-N2
8-B-K3	K-B2	21-R-R3!(c)	RxP
9-Q-Q3	P-KB4	22-R-Rck	KxR
10-B-N3	B-R3	23-R-Rck	K-N2
11-O-O-O	BxB	24-Q-R3	N-B3(d)
12-RxB	P-B4	25-PxNck	KxP
13-N-B3	P-B5	26-B-N5ck	Resigns(e)

Notes by the winner: (a) Loss of time, giving White a strong advantage in space 5-KN-Q2 is the only line for approximate equality.

(b) Action on K-side, or 6-P-QB4, is preferred to the text. 6-P-KR3, or 6-P-KB3, which was done the following move are better tries.

(c) Threatening to triple on R file with devastating effect.

(d) There are no saving moves.

(e) 26-K-B2 loses Q to N-K5ck if 26-K-N2; 27-Q-R7ck and mates in two more moves.

SOUTH VS. NORTH MATCH

The annual South vs. North match scheduled for the week end of May 29 to 31 will be played in San Luis Obispo. Participants are requested to make application for place on the team as soon as possible. Transportation will be supplied for those who have none. Write your editor, care of this column. For further information call Webster 18817 or Wyoming 3510. Let's get behind our team this year. There will be a minimum of 50 boards.

HIGH SCHOOL TOURNAMENT

Washington High School is host this year to the third annual Los Angeles County High School Chess Tournament. It will be held next Saturday from 9 a.m. to 5 p.m. The event is being sponsored jointly by the Youth Services Section of the Los Angeles City Schools and the Los Angeles County Chess League. John Keckhut, of the league, will be in charge of the play.

A. H. Herzel is tournament manager.

BOTVINNIK HOLDS LEAD

Mikhail Botvinnik, world champion, continued to hold his lead last week in his 24-game chess match with Vassily Smyslov in Moscow. After 20 games the standing was Botvinnik, 10½; Smyslov, 9½.

With four more games to be contested, Botvinnik's lead was reduced to one point after Smyslov's victory in the 20th game. Subtle play in the long-drawn-out ending enabled the challenger to capitalize on his promising position at the time of adjournment and to win in 72 moves, according to a report to the New York Times.

It was Smyslov's sixth victory. Botvinnik has won seven times and drawn seven games.

Smyslov, playing the black pieces in the 20th game, followed the lines of the King's Indian Defense for nine moves, as in the 18th game, and then switched to a continuation leading to a promising king's side advance.

Botvinnik, in the 19th game, again succeeded in holding off his challenger by scoring a draw.

Games from the match follow:

18th Game

SICILIAN DEFENSE

Smyslov	Botvinnik	Smyslov	Botvinnik
White	Black	White	Black
1-P-K4	Kt-QB4	23-R-B2	PxP
2-Kt-QB3	Pt-QB3	22-P-B2	K-B2
3-P-KKt3	P-KKt3	24-R-K	KR-Q
4-B-Kt2	B-Kt2	25-Kt-K6	R-Q2
5-P-Q3	P-QKt3	26-QR-K2	R-Kt2
6-KKt-K2	P-Q3	27-K-Kt3	P-KR3
7-Castles	B-Kt2	28-K-R4	R-KKt
8-P-B4	P-B4	29-R-KKt2	R(2)-Kt
9-P-KKt4	PxKt2	30-R-QB2	R(QKt)-QB
10-P-B5	Q-Q2		RxR
11-Kt-B4	PxP	31-P-R4	Kt-Q4
12-PxP	B-Q5ch	32-R-R2	K-B3
13-K-R	BxKt	33-R-B2	K-R4
14-PxK2	Kt-K4	34-K-R2	P-KR4
15-Q-K2	Kt-KB3	35-K-R4	Kt-K6
16-BxK	QxCh	36-P-Q5	KtxPch
17-Q-Kt2	QxQch	37-KxP	P-R3
18-KxQ	P-B5	38-R-QKt2	Kt-K6
19-B-K4	Kt-B6	39-R-B2ch	Kt-B4
20-B-Q3	KtxB	40-R-QKt2	P-Kt4
21-PxKt	R-QB	41-PxP	PxP

14th Game

KING'S INDIAN DEFENSE

Botvinnik	Smyslov	Botvinnik	Smyslov
White	Black	White	Black
1-P-Q4	Kt-KB3	18-R-B	Q-Kt5
2-P-QB4	P-KKt3	19-P-R3	QxKtP
3-P-KKt3	B-Kt2	20-QxRP	B-Kt2
4-B-Kt2	Castles	21-R-Kt	Kt-B6ch
5-Kt-QB3	P-Q3	22-R-R	BxP
6-Kt-B3	QKt-Q2	23-RxQ	KtxBch
7-Castles	P-Kt2	24-K-R2	Kt-B6ch
8-P-K4	P-B3	25-K-R3	BxR
9-B-K3	Kt-Kt5	26-QxP	B-K5
10-B-Kt5	Q-Kt3	27-P-R4	K-Kt2
11-P-KR3	PxP	28-R-Q	P-K4
12-Kt-KR4	Q-R3	29-Q-K7	R-B
13-PxKt	P-Kt4	30-P-R5	R-B7
14-KtxP	PxKt	31-K-Kt2	Kt-Q5ch
15-KtxP	QxKt	32-K-B	B-B6
16-P-K5	QxP	33-R-Kt	Kt-B3
17-BxR	KtxP	Resigns	

NEW MONTHLY BULLETIN

The Los Angeles County Chess League last week published the first issue of a monthly news bulletin, to be distributed free of charge to the members of the clubs comprising the County League. Copies of this bulletin, to the extent that the supply permits, will also be sent to other interested chess players within a 50-mile radius of Los Angeles.

The bulletin contains news of the individual clubs and items of interest to the local chess players. This bulletin supplements the material carried in the local newspapers which, due to space limitations, cannot give the details of individual club activities to the extent that the bulletin can.

Anyone wishing to receive this bulletin should drop a postcard to your editor, care of this column, giving name and mailing address, and also indicate whether you are a member of one of the clubs of the County Chess League and, if so, give the name of the club.