

The GAMBIT



OFFICIAL PUBLICATION OF THE MONTEREY PENINSULA CHESS CLUB
P.O. BOX 261, MONTEREY, CALIFORNIA 93940
SPONSORED BY THE MONTEREY RECREATION DEPARTMENT
Vol 1 No 5 October 1970
Bill Kennedy Editor 372 7496

CLUB OFFICERS

Bernie Lainson	President	375 9576
Chuck Nystrom	Vice-president	624 5531
Bill Kennedy	Secretary-treasurer	372 7496
Ted Yudacufski	Tournament Director	372 9790
Mike Ewell	Team Captain	372 9790
Col C. J. Daly	USCF Regional Vice President	624 7583
Ted Yudacufski	USCF Regional Director	372 9790
Bill Kennedy	USCF Regional Director	372 7496

Casa Alvarado Chess Center, Box 1308, Monterey, Calif 93940 372 9790

The Monterey Peninsula Chess Club meets each Thursday evening at the Casa Alvarado Chess Center, 467 Alvarado St., Monterey

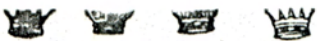


TOURNAMENT PLAY
Thanksgiving Turkey Shoot - A one-day 30-30 tourney at the Casa Alvarado Chess Center - Sunday Nov 22nd
Entry fee: \$3 TD Ted Yudacufski Non-USCF.

Monterey County Chess Championship Tournament USCF
Open to all residents of Monterey County & all Military personnel stationed in the county. Titles, Trophies, Awards, Cash prizes. Dec 12 - 13, 1970.
EF: \$5 before Dec 10 - later \$6 - Must be USCF or join. Five round swiss - TD: Ted Yudacufski.
Casa Alvarado Chess Center

Booster section for all others - No residence or membership requirements - Special prizes. EF: \$2

The Greg Wren Special Chess Tournament. Dec 19 & 20.
EF: \$4 - Two rounds Saturday - Two rounds Sunday.
Must be USCF. Prizes according to number of entries.



SUHOBECK SAYS:

(Alex Suhobeck, our USCF Master, has offered to annotate games of Club members and point out how failure to observe basic concepts may lead to failure. An understanding of the elementary principles should help the reader improve his play and win more often.)

Basically you should have a plan - based on some understanding of a few of the regular openings, but be flexible enough to play logical chess. Sacrifices, like investments, must promise a profitable return. The following game, between R. Atkinson (1545) and A. Eydal (1745), in our recent Bumbler B tournament points out that the Club player should not experiment in tournament play. This game shows, convincingly, that the search for "exotic" openings can only harm White and benefit Black. The violations of sound opening principles by White leads to a fine development and a comfortable initiative for Black. Strive to develop your pieces early in the game.

KING'S KNIGHT OPENING
Budapest Defence in reverse

White - Atkinson

Eydal - Black

1. N-KB3 P-Q4

2. P-K4? PXP

Count the tempos lost by moving the N twice in the opening and say, "NO!" to such experiments.

3. N-KN5 B-B4

4. N-QB3 N-KB3

White has lost the initiative and a pawn.

5. P-KB3 With true "Gambit" spirit and only one drawback - there is not the slightest chance for a real attack. 5 ... PXP

6. QXP Threatening the B and the QNP. 6... B-B1 The B remains developed if Black plays 6 ... Q-B1. 7. B-B4 P-K3

8. O-O P-KR3? 8 ... Q-Q5ch wins a piece and spoils the tune the Piano is trying to play. Also, P-R3 weakens the K side pawn protection (in the event Black castles this way). With three pawns in front and the N at KB3 the K is almost impervious to attack. The moment the formation is changed the structure loosens and is vulnerable.

9. NXKBP ? KXN If you have extra chessmen donate them to the Club's spare piece barrel. To give them away in a tournament game is terrible.

10. N-K4 Q-Q5ch 11. K-R1 B-K2
Capturing the B at this time leads to disaster after 12. NXN.

12. P-Q3	N-QB3	13. Q-R5ch	P-N3	14. N-N5ch
Still giving them away.		14 ... K-N2		15. Q-B3 PXP
16. BXP	R-R4	17. B-K3	Q-R5	18. P-KR3 N-K4
19. Q-K2	R-B4	20. B-KB2	Q-R4	21. Resigns

The chief object of all opening strategy is to get your pieces out quickly off the back rank and into active play. You cannot attack (let alone try to checkmate) with one or two pieces. You must develop all of them, as each one has a job to do. A good way to begin is to release two pieces at one stroke, and this can be done by advancing one of the center pawns.



County Championship Tournament

This annual tournament, to determine the Chess Champions of Monterey County, will be held at the Casa Alvarado Chess Center, 467 Alvarado St., Monterey on December 12 and 13, 1970. First round will start at 10:30 a.m. Saturday. Five rounds swiss system. First two rounds at 40/1½; last three rounds at 45/2.

Open to all residents of Monterey County and to all military personnel on active duty and stationed in the county. Must be member of USCF or join at time of registration.

Overall winner will be named Monterey County Chess Champion and will receive a trophy and a cash prize of \$25.

Best woman player (not winning top prize) will be named Monterey County Woman Chess Champion and will receive a trophy and a cash prize. If less than three woman players entered only title and trophy will be awarded.

Best player under 18 years will be named Monterey County Junior Chess Champion and will receive a trophy and a cash prize. If less than three juniors entered only the title and trophy will be awarded.

The best military player will receive a special prize.

A player may win only one prize. Tie-break points will be used to determine title and trophy winner. Cash prizes will be split in case of tie. A player qualifying for more than one prize may choose the prize desired. Remaining prize goes to the next best qualified. Player must complete all rounds to qualify for a prize.

ENTRY FEE: \$5 if paid prior to December 10, 1970. Mail check, name, address, USCF rating, and, if under 18, date of birth to Monterey Peninsula Chess Club, Box 261, Monterey, Ca 93940.

Registration desk will be open at the tournament site at 8:30 a. m. on Saturday December 12. Entry fee at the desk will be \$6.

Please bring sets and timers. Be prepared to show USCF membership card or to pay annual membership dues.

B O O S T E R

An additional tournament, open to all without residence or membership requirements. To be played at the same time and place as above. Entry fee \$2, payable at the registration desk. Open to all ages and chess skills. There will be prizes and awards. A wonderful chance to get the feel of tournament play - join us and bring a friend. Please bring sets and clocks if you have them.



BUMBLER B

Charles Pardini, of San Francisco, with a perfect 5-0 score won the annual "Fight of the Bumbler B" chess tournament held at the Casa Alvarado Chess Center on October 17 and 18.

Richard Bustamante, of Salinas, took second place money with his 4½-½ score and also a trophy as the best Junior under 18.

Duncan Campbell, of Orinda; Robert Howard, of Mountain View; and, David Tykinski, of Minneapolis, Minn., split third place money.

Bruce Dickinson, of Monterey, received a special prize as the best Monterey Peninsula Chess Club player.

David Sewell, of Salinas, took home the under-16 trophy.

Thirteen-year-old Heidi Lawitzke, of Carmel, was named the "Queen B" and also won a prize as the best in Class E.

Other prizes and awards: Class B - Arthur Mankin, of Santa Barbara; Best Class C - George Eding, of Monterey; Best Class D - John Anderson, of Carmel Valley. Special awards went to Gary Clark, of Seaside; Gary Field, of Lompoc; George Oakes, of Salinas; Ron Atkinson, of Carmel; Jeff Gorgas, of Santa Cruz; Cal Tanaka, of Seaside; and, Bradley Mills, of Santa Cruz.

42 players participated in the tournament. Ted Yudacufski directed.

Cross table

1. Charles Pardini	1765	W14	W18	W19	W 6	W 4	5
2. Richard Bustamante	1774	W15	W22	D 8	W13	W12	4½
3. Robert W. Howard	unr	W20	W21	L 6	W26	W19	4 14½
4. David Tykwinski	1765	W24	W23	W26	W11	L 1	4 14
5. Duncan Campbell	1713	L16	W39	W24	W23	W11	4 10½
6. David Sewell	1710	W37	W27	W 3	L 1	D 7	3½ 15½
7. Bruce Dickinson	1712	W10	W17	L11	W27	D 6	3 15
8. Arthur Mankin	1700	W38	W 9	D 2	L12	W18	3 14½
9. George Eding	1522	W13	L 8	W28	D19	W21	3 13½
10. Roberts Robbins	1414	L 7	D41	W36	W25	W22	3 10½
11. Bruce Dewoolfson	1648	W28	W12	W 7	L 4	L 5	3 16½
12. Roger Gribble	1769	W33	L11	W25	W 8	L 2	3 15
13. Ahmad Koopal	1759	L 9	W38	W15	L 2	W30	3 14
14. Gary Clark	1526	L 1	W31	L18	W36	W26	3 13
15. Jack Dennis	1528	L 2	W40	L13	W35	W23	3 12-
16. David Vining	1502	W 5	L25	L23	W32	W27	3 12-
17. Virgil Pope	1562	W32	L 7	L20	W37	W24	3 11
18. James Sutherland	1621	W31	L 1	W14	D22	L 8	2½ 16
19. George Oakes	1702	W35	W29	L 1	D 9	L 3	2½ 15
20. Calvin Tanaka	1591	L 3	D28	W17	L21	W33	2½ 13½
21. Bradley Mills	Unr	D25	L 3	W41	W20	L 9	2½ 13-
22. Charles Nystrom	1720	W39	L 2	W29	D18	L10	2½ 13-

With 2 points: 23. Richard Osborne, 24. Gerard Gerstl, 25. Ken Burns, 26. M. E. Mattingly, 27. David Bennett, 28. Robert Caradien, 29. Cliff Lamb, 30. Ron Atkinson, 31. Jeff Gorgas, 32. Daniel Mankin, 33. Kim Taylor, 34. A. Eydal. With 1½ points: 35. John Anderson, 36. John Jarowski. With 1 point: 37. Bill Kennedy, 38. Steve Hand, 39. Heidi Lawitzke, 40. Gary Field. With ½ point: 41. Eugene Ottow. With 0 points: 42. M. O. Lawitzke.

BUSINESS MEETING: A regular business meeting of the membership will be held at the regular place of meeting starting at 8:00 p. m. Thursday November 12, 1970.

Nomination of club members to run for office in the election of Club Officers to be held on the second Thursday of January 1971. Chuck Nystrom, Chairman of the Nominating Committee, should be contacted if you desire to be nominated for office or know of someone that does.

CLUB CHAMPIONSHIP TOURNAMENT: FLASH: It has been reported that our President, Bernie Lainson has won the Club Championship. Complete details in the next issue of the GAMBIT.

ATTENTION BUMBLER B PLAYERS : Found in the Casa Alvarado after completion of the Bumbler B Tournament: 1 each Knight (player's Choice) and 1 each small peg set. These articles are in safe keeping at the Casa and may be claimed by contacting Ruby and identifying same.

MATERNITY WARD: President and Mrs Lainson impatiently awaiting the arrival of either a new chess player or a new dance instructor - or it may be both.

Naomi Yudacufski expected to become a sister very soon.

MATCH PLAY: USCF has reinstated procedures for individuals to play match games for rating purposes. Members interested in playing match games should get in touch with Mike Ewell, Club Team Captain, for the details.

USCF MEMBERSHIPS: Members are reminded that they should re-new their USCF memberships through the Club Treasurer. The Club treasury stands to gain a percentage of each re-newal fee - and every little bit helps. And while we are on the subject - Why not a membership in USCF for someone interested in chess who is not now a member, for Christmas?!!

MPCCLUB ANNUAL DUES: It is that time of the year again... Club membership dues are now payable for 1971. Our fiscal year runs from January 1 thru December 31. Regular fee: \$8. Married couple: \$12. Junior (under 19): \$4. Enlisted personnel of the Armed Forces on active duty: \$4. Make your check payable to Monterey Peninsula Chess Club and mail it to P. O. Box 261, Monterey, California 93940. Your membership card will be sent by return mail - or pick it up at the Casa on meeting nights.

KIBITZERS BEWARE: In the year 399 B. C., a Greek philosopher, Socrates, who went around giving unwanted advice, was poisoned. So, if someone offers you a cup of Ruby's coffee - watch out.

SUHOBECK SAYS: Elsewhere in this issue is the first (of what we hope will be many) game of a MPCClub member annotated by Alex Suhobeck. It is hoped that by publishing these club games - as opposed to games of grandmaster and such, more interest will be generated and thus, more members will re-visit their buddies' games and as a result improve their own game. If you have an interesting, short game recorded - let Alex have a copy and perhaps it will be offered to the membership through these columns, along with words of wisdom trying to correct basic faults. We will try to get Lainson, Ewell, Yudacufski and others to furnish the GAMBIT with annotated games for publication. It is not expected that these games will turn you into a super-duper chess player - but rather, will call your attention to some of the mistakes made and offer advice on better moves. Also if you have any questions about openings or the rules of chess - ask the GAMBIT. We might be able to find an answer for you that will improve your rating.

