

The GAMBIT



OFFICIAL PUBLICATION OF THE MONTEREY PENINSULA CHESS CLUB

P.O. BOX 261, MONTEREY, CALIFORNIA 93940

SPONSORED BY THE MONTEREY RECREATION DEPARTMENT

Vol 2 No 3

April 1971

Bill Kennedy

Editor

372 7496

CLUB OFFICERS

Chuck Nystrom	President	624 5531
Sam Gales	Vice-president	394 6472
Bill Kennedy	Secretary-treasurer	372 7496
Ron Atkinson	Tournament Director	624 6059
Frank Sutor	Team Captain	372 4987
Col C. J. Daly	USCF Regional Vice-president	624 7583
Ted Yudacufski	USCF Regional Director	372 9790
Bill Kennedy	USCF Regional Director	372 7496

Casa Alvarado Chess Center, Box 1308, Monterey, Ca 93940 372 9790

The Monterey Peninsula Chess Club meets each Thursday evening at the Casa Alvarado Chess Center, 467 Alvarado St., Monterey



TOURNAMENT CALENDAR

Club Championship Tournament - Now in progress - Ron Atkinson, Director
Presidio Service Club - May 21 - 22 (Military only) T. Yudacufski
MONTEREY INTERNATIONAL OPEN * JUNE 26-27 USCF - Hotel San Carlos
Spring Rating Tournament - USCF - April-May - Ron Atkinson, Director
Summer Rating Tournament - USCF - July-August- Ron Atkinson, Director
Monterey Junior Jubilee - Juniors only (under 21) USCF- July 10-11 Casa
Fight of the Bumbler B - USCF - Under 1800 - October 16-17 - Casa

Complete details on any of the above chess tournaments available from your Secretary - Bill Kennedy - or the Casa Alvarado Chess Center.



The Monterey Junior Jubilee, on July 10-11, restricted to junior chess players under 21, will be held at the Casa Alvarado Chess Center, 467 Alvarado St, Monterey. Entry Fee \$5.00. Must be a member of USCF or join at time of registration. USCF memberships will be discounted 20% for all Juniors joining (new or renewals) at time of registration. Co-sponsored by Monterey Peninsula Chess Club, Casa Alvarado Chess Center, and the Monterey Parks and Recreation Department. Tournament Director Ted Yudacufski. 5 round swiss. 1st rd: 11:00 a.m. Saturday, July 10. Winner will receive entry fee to US National Junior Open at Portland, Ore on July 29 - August 5, 1971; \$50 cash and 1st place trophy. Other cash prizes and trophies. Best MPCCLUB player will receive a hand carved ivory chess set donated by USCF Regional Vice-president, Col C. J. Daly.

OPEN TO ALL JUNIORS UNDER 21 YEARS OF AGE

Suhobeck says:

(Under the headline, "Short and Bitter", the following game from the Lockheed (sic) California Open, between Jim Mallrath, with White, and Alex Suhobeck, with Black, was reported in the Minnesota Chess Journal recently. Jim is from Redwood City.)

- | | | | | | |
|----------|-------|----------|-------|-----------|-------|
| 1. P-K4 | P-K4 | 4. O-O | P-Q3 | 7. N-QR4 | Q-B3 |
| 2. N-KB3 | N-QB3 | 5. N-B3 | B-KN5 | 8. NXB ** | NXNch |
| 3. B-B4 | B-B4 | 6. P-Q3* | N-Q5 | 9. PXN | BXP |
| | | | | 10. Q-Q2 | P-KR3 |
- (* 6. P-KR3 is better as then White can get in) 11. Resigns ***
P-KN4 later.)
(** 8. B-KN5! was much better.) (***) The threat of ...Q-N3ch was too powerful.)



From the Monterey Peninsula Chess Club Championship Tournament.

White Woronick

Black Gales

- | | | | | | |
|----------|-------|-----------|----------|------------|---------|
| 1. P-K4 | P-K4 | 8. O-O | B-KN5 | 15. P-QN4 | PXN *** |
| 2. N-QB3 | N-KB3 | 9. Q-K1 | N-B3 | 16. P-X P | N-Q5 |
| 3. P-B4 | P-Q3 | 10. B-K3 | O-O-O | 17. PXN | PXP |
| 4. PXP | PXP | 11. N-QN5 | B-B4 | 18. NXP | QXP |
| 5. N-KB3 | B-Q3 | 12. P-QB3 | BXBch * | 19. N-B6ch | PXN |
| 6. B-B4 | Q-K2 | 13. QXB | K-N1 | 20. PXP | Q-Q3 |
| 7. P-Q3 | P-KR3 | 14. P-QR4 | P-QR3 ** | 21. KR-QN1 | Resigns |

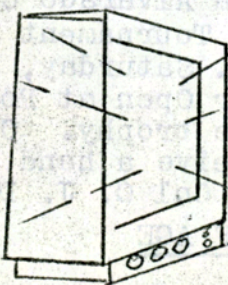
* Why the rush? True, you have to exchange attacking pieces, but in this particular case you should not hurry. 12... P-QR3 instead looks like a quite acceptable move. The idea is: 13. P-QR4 PXN; 14. PXP N-N1! ; followed by KN-Q2 eventually.

** Loss of time since Knight cannot be captured under any circumstances. 14...N-Q2 then N3 should be tried.

***After this move Black's game cannot be saved unless a miracle happens (which in my own games does occur quite often, usually against my best interests.)



If you have a game you think might be of some interest and at the same time educational, with Suhobeck's comments, please pass it to the editor. We think the novice has more interest in the games of his peers than a book full of Master's mistakes. Besides, if you would rather ponder over the Master's games ... you're reading the wrong publication. Our stuff is for the woodpusher.



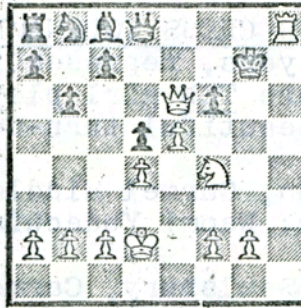
"With that move Bobby has tied-up this match." "KMST-TV will bring you the sudden death play-off on Wednesday, Thursday, Friday and Saturday."

Announce the Mate!



Black

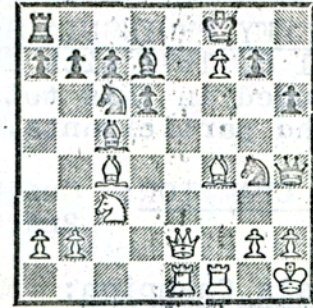
White mates in moves.



Black

White

White mates in moves



Black

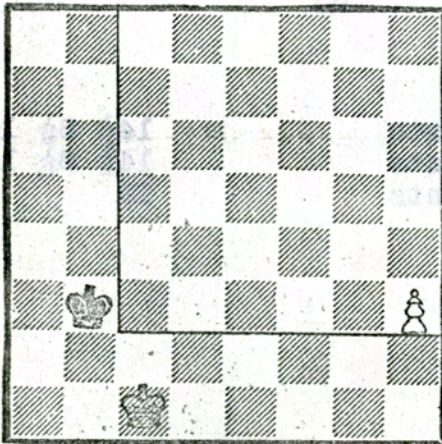
White

White mates in moves

Continuing our discussion to help the novice chess player understand what to watch for during the progress of the game:

Pawn Promotion

In a position likely to occur in actual play the Pawn may march independently to promotion, the adverse King being unable to attack and capture it. More likely to occur, the Pawn, to have a chance of reaching the eighth rank successfully, must be supported or conveyed by its own King, or it cannot escape or pass the adversary. In the following situation, the question whether the Pawn can be promoted is one of simple calculation, with precise answer in every instance. When a Pawn is a distance from its own King, as in the diagram, it depends upon the move. If White moves, the Pawn is promoted. It will take the Black King four moves to reach KB2. The pawn, having moved first, and making move for move, will be at R7 and for its fifth move, to R8. On the other hand, if Black moves first then he will



WHITE

reach KB2 before the Pawn reaches R7, and for his fifth move will go to the N2 or N3, capturing the pawn on the next move. We have arrived at this by actual enumeration of the moves required by the King and the Pawn. There is a simpler process. Conceive a square whose side is the Pawn's distance from promotion, plus the square the Pawn is on at the moment; the angles being KR3, KR8, QB8, and QB3. The Black King is not within this square. If the Black King moves first he moves within the square and intercepts the Pawn. If the Pawn moves first, the King cannot get within the square and cannot capture the Pawn.

Any Pawn reaching the last rank must be exchanged immediately, as a part of the same move, for a Queen, Rook, Bishop, or Knight of the same color, at the choice of the player and without reference to the other men still remaining on the chessboard. This exchange of a Pawn is called "promotion" and the action of the promoted man is immediate.



M PCC & CACC

TOURNAMENT RESULTS

Rapid Transit Champions: Bernie Iainson won the pin and had his name entered on the Rapid Transit Plaque as the Champion for the month of April.

MONTEREY PENINSULA SCHOOLS CHESS TOURNAMENT: Held at the Casa Alvarado on April 8, 1971 with 49 players, representing 19 local schools, participating. Included in this total were TEN girl players. Our congratulations to all of the participants. A beautiful turn-out. Come again next year!!!

GIRL CHAMPION: Susan Fuhs, Carmel Middle School (7th grade)
2nd place: Naomi Yudacufski, Monte Vista School (3rd grade)

Schools Champion: Frank Saulsbury, Carmel High School (11th grade)
2nd: George Eding, Monterey High School (12th grade)
3rd: Gary Clark, King Junior High (Seaside) (9th grade)
4th: Bill Faus, Carmel High School, (11th Grade)

7 - 8 - 9 Grades 1st: Joe Miller, Robert Louis Stevenson School (8th grad
2nd: Felix Millan, Fremont Jr High (9th grade)
3rd: Mack Braxton, King Jr High (8th grade)

4 - 5 - 6 Grades 1st: Olav Grinde, Carmel Middle School (6th grade)
(2nd: Glen Ponder, Thomas O. Larkin School (6th grade)
Tie----- (2nd: Weegie Matthews, Carmel Middle School (6th Grade)
(2nd: S. Joey Gales, Del Rey Woods School (5th grade)

1 - 2 - 3 Grades 1st: Douglas Comstock, Forest Grove School (2nd Grade)
Tie---- (2nd: Naomi Yudacufski, Monte Vista School (3rd grade)
(2nd: Bobby Hammond, La Mesa School (3rd grade)

Winners received trophies, memberships in the local chess clubs, USCF memberships, entry fees to the Monterey International Open.



EASTER 30-30 CRUNCH:

1st: Mitchell Bedford	4 points	14 1/2	8 1/2	11 1/2
2nd: Dan Maxwell	4 points	14 1/2	8 1/2	10 1/2
3rd: Robert Woronick	4 points	12		
4th: Bernie Iainson	3 1/2			
5th: Kenneth Howes	3 1/2			
6th: Mike Ewell	3			
7th: Ted Yudacufski	3			
8th: Roger Bundy	3			
9th: Greg Wren	3			



ATTENTION JUNIORS: (From the CC CHESS VOICE) Junior Chess (Editor: Kenny Thomas) published monthly, \$2.00 per annum. This newest magazine to appear in the US coincides well with the recent upsurge in junior activity. Mr Thomas, a bright and energetic junior player himself, is now an "A" rated player who aspires to be a professional chess player. He has collected a staff of junior Experts to contribute to his monthly mimeographed magazine. Junior players, and others, are invited to subscribe (5390 Laurie Lane, Memphis, Tn 38117.)

MONTEREY JUNIOR JUBILEE

CHESS TOURNAMENT

DATE: Saturday and Sunday, July 10-11, 1971.

SITE: Casa Alvarado Chess Center,
467 Alvarado Street, Monterey (above the Viennese Pastry Shop).

CO-SPONSORS: Monterey Recreation Department, Monterey Peninsula Chess Club,
Casa Alvarado Chess Center.

ELIGIBILITY: Open to all JUNIORS (under 21) who are or will become members of the United States Chess Federation (USCF). Players who cannot produce an unexpired USCF membership card upon registration will be required to join in order to play. USCF memberships can be obtained at the tournament site at a 20% discount--\$4. (under 21). Benefits of USCF membership include a monthly subscription to "CHESS LIFE & REVIEW" magazine, a USCF (national) chess rating, and discounts on all types of chess equipment, - books, sets, clocks, etc.

TYPE OF TOURNAMENT: Five Round Swiss System. USCF rated.

Three rounds Saturday, July 10, 1971.

Two rounds Sunday, July 11, 1971.

PRIZES: 1st PRIZE: Entry fee to United States National Junior Open,
(July 29 --- August 5, 1971, Portland, Oregon),
Fifty Dollar Cash Award PLUS 1st Place Trophy.

2nd PRIZE: Trophy PLUS Cash Award*.

3rd PRIZE: Trophy PLUS Cash Award*.

Girls PRIZE: Special 1st Place Trophy.

Top MPCC Junior: The top finishing MPCC player will receive a hand-carved ivory chess set donated by USCF Regional Vice President Col. Charles Daly.

*(1st Place cash award & entry fee to U.S. Jr. Open is guaranteed.
2nd & 3rd Place cash awards will be determined by total number of entrants. More cash award PRIZES will be added if entry permits)

ENTRY FEE: \$5.00 (plus USCF membership).

SCHEDULE: (Saturday) Registration 9:00 a.m. to 10:30 a.m.; Players' meeting 10:45 a.m.; Round I 11:00 a.m.; Round II 3 p.m.; Round III 7 p.m.
(Sunday) Round IV 9 a.m.; Round V 2 p.m. Round times approximate.

TIME CONTROL: First two rounds 40 moves in 1½ hours, 25 moves per hour thereafter; Last three rounds 45 moves in 2 hours, 25 moves per hour thereafter.

TOURNAMENT DIRECTOR: USCF Region VIII & California State Chess Federation
Director Ted Yudacufski.

EQUIPMENT: Players are requested to bring chess clocks and Staunton style chess sets.

INQUIRIES: Will gladly be answered if addressed to Bill Kennedy, Secretary-Treasurer, MPCC, P.O. Box 261, Monterey, California 93940.

TO: Monterey Peninsula Chess Club
P.O. Box 261, Monterey, Calif. 93940

Here is my advance entry for the 1971 MONTEREY JUNIOR JUBILEE CHESS TOURNAMENT. Enclosed entry fee: \$_____

NAME _____ USCF RATING _____

ADDRESS _____ CITY _____ ZIP _____

7th Annual Monterey International Open Chess Tournament - June 26 & 27, 1971

presented by the
MONTEREY PENINSULA CHESS CLUB
In the Pacific Room of the Hotel San Carlos
Franklin and Calle Principal, Monterey, California

Tournament Director: USCF Region VIII & California State Chess
Federation Director Ted Yudacufski



TOURNAMENT SCHEDULE

FIVE ROUNDS SWISS

SATURDAY, JUNE 26, 1971

8:30 a.m. to 10:30 a.m.—Registration at Hotel San Carlos Pacific Room
10:45 a.m.—Players Meeting in Pacific Room



11 a.m.	Round 1	40 moves in 1½ hours
3 p.m.	Round 2	40 moves in 1½ hours
7 p.m.	Round 3	45 moves in 2 hours

SUNDAY, JUNE 27, 1971		
9 a.m.	Round 4	45 moves in 2 hours
2 p.m.	Round 5	45 moves in 2 hours

\$800 GUARANTEED PRIZE FUND

MORE IF
ENTRIES PERMIT

1ST PRIZE	\$200	plus TROPHY
2ND PRIZE	\$100	
3RD PRIZE	\$ 65	
4TH PRIZE	\$ 50	
CLASS A 1ST	\$ 50	plus TROPHY
CLASS A 2ND	\$ 25	
CLASS B 1ST	\$ 50	plus TROPHY
CLASS B 2ND	\$ 25	
CLASS C 1ST	\$ 50	plus TROPHY
CLASS C 2ND	\$ 25	

CLASS D AND	
UNDER - 1ST	\$ 40 plus TROPHY
CLASS D AND	
UNDER - 2ND	\$ 20
WOMEN'S 1ST	\$ 40 plus TROPHY
UNRATED 1ST	\$ 30 plus TROPHY
JUNIOR 1ST	\$ 30 plus TROPHY
(JR.-UNDER 18)	
PRIZE TO WINNER OF UPSET GAME	
TROPHY TO BEST MONTEREY PLAYER	



Advance, \$13;
After ~~JUNE 24~~, \$15.
Juniors (under 18), \$9;
After ~~JUNE 24~~, \$11

Must be member of, or join at time of registration, the United States Chess Federation.

For room reservations write directly to Hotel San Carlos, Box 551, Monterey, Calif. 93940. PLEASE MENTION THE CHESS TOURNAMENT. Rates start at:— Singles, \$10 Double, \$13; Twin, \$14;

Players are requested to bring Staunton style chess sets and timers.

Special Rapid-Transit Tournament will be held at the Casa Alvarado
Chess Center, 494 Alvarado St., Monterey, at 8 p.m., Friday, June 25
Ted Yudacufski will direct. Cash prizes for winners.

To: Monterey Peninsula Chess Club
P.O. Box 261
Monterey, Calif. 93940

Yes, here is my advance entry for the 1971 Monterey International Open Chess Tournament at the special money saving rate.

Enclosed entry fee: \$ _____

NAME _____ USCF RATING _____

ADDRESS _____

CITY _____ ZIP _____ BIRTH DATE _____

(under 18)



MONTEREY PENINSULA CHESS CLUB
P.O. BOX 261 • MONTEREY, CALIFORNIA 93940



CHESS VOICE
Box 1622
OAKLAND CA
949604