

*Let's coincide*

# The GAMBIT



OFFICIAL PUBLICATION OF THE MONTEREY PENINSULA CHESS CLUB

P.O. BOX 261, MONTEREY, CALIFORNIA 93940

SPONSORED BY THE MONTEREY RECREATION DEPARTMENT

Vol 2 No 1

January 1971

Bill Kennedy

Editor

372 7496

## CLUB OFFICERS

Chuck Nystrom	President	624 5531
Sam Gales	Vice-president	394 6472
Bill Kennedy	Secretary-treasurer	372 7496
Ron Atkinson	Tournament Director	624 6059
Frank Sutor	Team Captain	372 4987
Col C. J. Daly	USCF Regional Vice-president	624 7583
Ted Yudacufski	USCF Regional Director	372 9790
Bill Kennedy	USCF Regional Director	372 7496

Casa Alvarado Chess Center, Box 1308, Monterey, Calif 93940 372 9790

The Monterey Peninsula Chess Club meets each Thursday evening at the Casa Alvarado Chess Center, 467 Alvarado St., Monterey



## TOURNAMENT CALENDAR

Monterey Peninsula Chess Club Winter Rating Tournament will start at the Casa Alvarado Chess Center, Thursday, January 28, 1971. Clocks will be started sharply at 7:30 p. m. Five rounds, swiss system, must be member of USCF, or join at time of registration. Tournament Director: Ron Atkinson. Play will be conducted, one game each meeting night, until the five rounds are completed. Entry fee: \$2.00 - 40 moves in 2 hours - 20 moves per hour thereafter. To enter contact the tournament director. Trophies and prizes will be offered.

Washington's Birthday Cherry Tree Open. USCF. February 20 & 21, 1971. 5 rounds swiss system. Tournament Director: Ted Yudacufski. Entry fee is \$7.00 Must be members of USCF. Casa members get a discount. To enter contact the tournament director, at the Casa, or phone - 372 9790. Cherry tree - Cherry pie - Cherry icecream - Cherry Candy - Cherries.

Spring Rating Tournament- April and May - details later.

Monterey International Open Chess Tournament - Late in June -

Summer Rating Tournament - July-August - Details later.

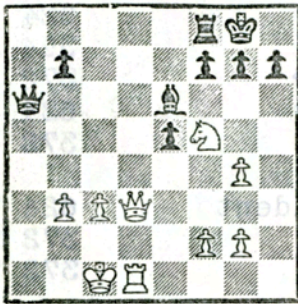
Monterey Peninsula Chess Club's Championship Tournament - Details on this important Club Tournament still being worked on by the Committee - will publish complete details as received.

Improve your game - compete in your Club's tournaments - See you there

# Announce the Mate!

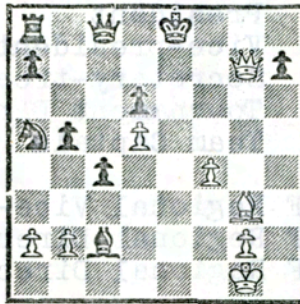
(From the New Zealand CHESSPLAYER magazine)

In our search for ways to assist the weaker, inexperienced chess player to improve his game we have come across these end game positions - all taken from master games - and offer them in the hopes that they will help the wood-pusher to recognize mating positions when they arise. In each ending White has a forced mate. The correct answers will not be published, but will be posted at our meeting room at the Casa. If you think that this type of problem is suitable for this publication and can stir the mass in your think tank - let us know - we have more of them. You play from the bottom. For the best results, set these problems up on your board.



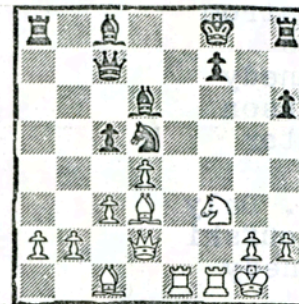
White

1. White mates in ..... moves.



White

2. White mates in ..... moves.



White

3. White mates in ..... moves.

Experience shows that the novices at chess find most difficulty in deciding what to do when the opening stage of a game is over. They have "moved each piece once before moving any twice" and they are then in the position of a beginner at bridge who has led all his aces and is stumped.

Here is a paragraph that sums up part of the problem:- You should know that it is essential to get your pieces into play without wasting moves, and making as few pawn moves as possible. This is called primary development. Now you must continue with the secondary development. You rearrange your men with a definite end in view. (This and subsequent phases may take anything from one or two to eight moves, even more.) This completed, you begin the third development, and so you continue until your opponent is mated or you are held to a draw. One phase of development succeeds another and each may be short or long, or can overlap if it is desirable to begin one maneuver before completing the last. Each phase is the tactical application of a strategic idea, based on some aspect or aspects of the position.

Now you will need to know what definite end you should have in mind. This will depend on the nature of the position. Here are some of the more common winning ideas in chess:

- a. Winning material (your opponent's men.)
- b. Gaining time for a move or moves.
- c. Foreseeing your opponent's plan, judging it unsound, and letting him play it to your gain.
- d. Keeping an attack going by a material sacrifice.
- e. Playing to prevent your opponent making a desirable move.
- f. In the opening, playing to retard your opponent's development.

All of these concern your possible motives for a series of moves or plan.

MINUTES OF THE ANNUAL BUSINESS MEETING

The meeting was called to order at 8:20 p.m., January 14, 1971, by President Lainson. There were 17 members present, including at least two members of the executive committee, constituting a quorum. The minutes of the previous meeting were read and accepted. The report of the Treasurer was read and accepted. President Lainson then turned the meeting over to the Chairman of the Nominating Committee, Vice-president Nystrom who presented a slate of nominees for the Club Officers for 1971 and conducted the election of the officers. The following were elected to office: President, Chuck Nystrom; Vice-president, Sam Gales; Secretary-Treasurer, Bill Kennedy; Tournament Director, Ron Atkinson; Team Captain, Frank Sutor. Chairman Nystrom announced the results of the voting and assumed the Chair as President amidst a round of applause. He expressed, for himself and the Club, appreciation, to the vacating officers, for their services during the past year. Past President Lainson was recognized and thanked the President for his kind words and urged the membership to continue to support the efforts of the Casa Alvarado Chess Center. Ted Yudacufski, outgoing Tournament Director, was recognized, thanked the Chair for his kind words, and stated that the annual dues for Chess Center membership was \$45 and that this could be paid in three monthly installments. President Nystrom then introduced a new member - Al Gwin, of Marina, who received a round of applause as a welcome into the Club. It was suggested that the President appoint a committee to seek ways and means to improve the chess activities among the juniors in the community. President Nystrom stated that he would appoint such a committee and would study the feasibility of appointing a junior to chair such committee. The group discussed various suggestions for conducting the annual Club Championship tournament. It was pointed out that the Club's Constitution required that the tournament be a round robin, all members eligible, to consume as much time as required to complete the schedule. The Constitution does NOT require that membership in any other chess organization be a requirement for entry into the Club Championship Tournament. The President announced that he would call the Executive Committee to study this matter and make such recommendations as they saw fit. There being no further business the meeting was adjourned, at 9:20 p.m., to meet again on April 8, 1971.

Bill Kennedy, Secretary

*Submitted the me card to Glidden*  
*McM*  
*Kennedy, Gales, Sutor, Atkinson, Gwin*  
Harry Glidden, Chairman of the 1971 U.S. Junior Open Chess Tournament, has invited Monterey to submit a bid to hold this important tournament in our area. The tournament to be conducted between July 29 and August 5, to allow players to play in the U. S. Open in Ventura, on one round trip ticket. The event to be an eight round swiss, with not more than two rounds per day.

Ted Yudacufski heads a committee to bring this matter before the local civic leaders and seek the aid of donors willing to give financial support (tax deductible) to this cause. Also needed is the use of a tournament room, reasonable room and board for the traveling entrants, and assistance in conducting the tournament.

If you have any ideas, or think you would like to assist in any way, please contact Ted at the Casa ( address and telephone on page one).









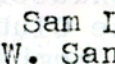
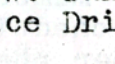

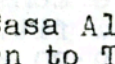
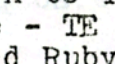
It is expected that some 200 entrants will enter this tournament.

International Grandmaster Walter Browne gave a simultaneous exhibition against 22 boards at the Casa Alvarado Chess Center on December 5, 1970. He won twenty of these games and drew two. Dan Maxwell, a student at DLI, Presidio of Monterey, drew one game and George Oakes, of Salinas, drew the other. George was kind enough to furnish us with a copy of his game and we publish herewith, without comment:

White - W. Browne

Ruy Lopez

George Oakes - Black

1. P-K4	P-K4		18. N-R6ch	K-R1
2. N-KB3	N-QB3		19. N-N5	N-KN1
3. B-N5	P-QR3		20. NXB	RXN
4. B-R4	N-B3		21. NXN	KXN
5. O-O	P-QN4		22. B-K3	R-Q1
6. B-N3	B-K2		23. P-QR4	P-B5
7. R-K1	O - O		24. PXP	PXP
8. P-B3	P-Q3		25. R-R6	N-Q5
9. P-KR3	N-QR4		26. FXN	RXR
10. B-B2	P-B4		27. P-Q5	Q-Q3
11. P-Q4	Q-B2		28. R-KB1	R/1-R1
12. QN-Q2	N-B3		29. P-B4	R-R8
13. PXP	PXP		30. B-QN1	B-KN2
14. N-KB1	R-K1		31. Q-KB2	R-QB1
15. N-K3	B-KB1		32. PXP	QXKP
16. Q-K2	B-K3		33. QXPch	K-R1
17. N-KB5	P-KN3		34. Draw agreed.	

Oakes belongs to the Salinas Chess Club, Sam Lowe, President, and they meet at the John Steinbeck Library, 110 W. San Luis, 7 to 11 p. m. on Friday Nights. Mailing address: 312 Noice Drive, Salinas, Ca 93901.



Naomi Yudacufski, lively mascot of the Casa Alvarado CC, now has a baby sister. Daria Teruko Yudacufski was born to Ted and Ruby Yudacufski on January 9, 1971. Check that middle name - TE for Ted - RU for Ruby - KO - Child of - TERUKO - child of Ted and Ruby. Beautiful. And, is Daria the feminine of Darius? Darius I, King of Persia ( birth place of chess?) and was known as Darius the Great. Time was about 500 B. C. Anyway, our heartiest congratulations to the Yudacufski family. Mom is fine, Naomi is happy, Dad ready to take a vacation.



If you haven't sent in your club dues for 1971 - now's the time to do it. Regular \$8 Married couples \$12 Juniors (under 19) \$4 Enlisted members of the Armed Forces - on active duty - \$4. Make check payable to the Monterey Peninsula Chess Club and mail to P. O. Box 261, Monterey.



Mike Ewell, MPCCLUB's Rapid-transit Champion, earned enough qualifying points to become the CCCA qualifier when Jude Acers was unable to compete in the California State Championship Tournament. The ten finalists met at the Mechanics' Institute in San Francisco for a round robin to determine the State Chess Champion for 1970 on Dec 27 - 30. Mike, with his USCF rating of 2007 was playing in a field that averaged 2152. Mike managed to win one game and draw two - one draw against the top man and co-champion, Charles Henin. Congratulations, Mike ... Better luck next year.



In the 165 player California Open held at Ventura Suhobeck tied for 2nd.

# S. GLIGORICH

# SIMULTANEOUS

Svetozar Gligorich, Yugoslav grandmaster, will give a simultaneous chess exhibition at the Casa Alvarado Chess Center, 467 Alvarado St., Monterey, California Saturday afternoon, February 27, 1971. There are a limited number of boards available, but chess enthusiasts may reserve their board now by mailing a check for \$5, with name and address, to: Monterey Peninsula Chess Club, P. O. Box 261, Monterey, Ca 93940. Or, you may visit the Casa and reserve your board there. In either case - do it now! Reserve your board early and mark the date.

Gligorich was born in Belgrade on February 2, 1923. He was awarded the title of chess master at 16; International Master in 1948; and Grandmaster in 1951. He has been the National chess champion of Yugoslavia about a dozen times. He travels a great deal and has played in almost every important international tournament during his chess career. He has won the Hastings' numerous times; the Warsaw in 1947; Mar del Plata in 1950 and 1953; Buenos Aires in 1955; at Lenin-grad in 1957 he won six out of eight in a Yugoslav - USSR match; in 1957 he also tied with Reshevsky for first place in the U. S. Open at Dallas. He won a gold medal at the 1950 Chess Olympiad held at Dubrovnik. In 1965 he took first in the Copenhagen Tournament ahead of Larsen and Taimanov. He was undefeated in the Tel Aviv Tournament in 1966. Last year he played in the "Match of the Century" - Russia against the rest of the world, The Vincovic Tournament and in the Interzonal Tournament at Palma de Mallorca. He gets along well with both the players and the officials in these very important tournaments.



SVETOZAR GLIGORICH

An author and chess journalist by profession, he has published several excellent chess books and writes the "Game of the Month" article in the USCF Chess Life and Review. He is a fine linguist, an expert swimmer, an excellent tennis player and an amateur musician. You will certainly enjoy a game with this very popular international chess celebrity.

## Reserve your board now!

Monterey Peninsula Chess Club  
P. O. Box 261, Monterey, Ca 93940

\_\_\_\_\_ date

Please reserve \_\_\_\_\_ board(s) for which I enclose \$ \_\_\_\_\_, @\$5.00 each, for the GLIGORICH SIMULTANEOUS exhibition to be held at the Casa Alvarado Chess Center, 467 Alvarado St, Monterey, on Saturday afternoon, February 27, 1971.

\_\_\_\_\_ name

\_\_\_\_\_ (please print)

\_\_\_\_\_ street address

\_\_\_\_\_ city:

\_\_\_\_\_ zip #

\_\_\_\_\_ phone:

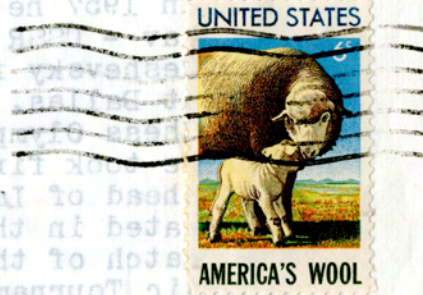
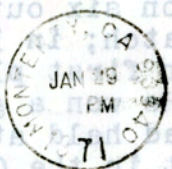
# 2. GLIGORICH SIMULTANEOUS

vetozar gligorich, yugoslav grandmaster, will give a simultaneous chess exhibition at the Casa Alvarado Chess Center, 487 Alvarado St., Monterey, California Saturday afternoon, February 27, 1971. There are a limited number of boards available, but chess enthusiasts may reserve their board now by calling a check for \$5, with name and address to: Monterey Peninsula Chess Club, P. O. Box 261, Monterey, Ca 93940. Or, you may visit the Casa and reserve your board there. In either case - do it now! Reserve your board early and mark the date.

*Handwritten notes:*  
 2-27-71  
 2-28-71  
 3-1-71  
 3-2-71  
 3-3-71  
 3-4-71  
 3-5-71  
 3-6-71  
 3-7-71  
 3-8-71  
 3-9-71  
 3-10-71  
 3-11-71  
 3-12-71  
 3-13-71  
 3-14-71  
 3-15-71  
 3-16-71  
 3-17-71  
 3-18-71  
 3-19-71  
 3-20-71  
 3-21-71  
 3-22-71  
 3-23-71  
 3-24-71  
 3-25-71  
 3-26-71  
 3-27-71  
 3-28-71  
 3-29-71  
 3-30-71  
 3-31-71



**MONTEREY PENINSULA CHESS CLUB**  
 P. O. BOX 261 • MONTEREY, CALIFORNIA 93940



He gets along well with both the players and the officials in these very important tournaments. An author and chess journalist he has published several excellent chess books and writes the "Month" article in the TRCF Chess Life and Review, an expert swimmer, an excellent tennis player, and an amateur musician. You will certainly enjoy a game with this very popular international chess celebrity.

*Class Voice*  
**M. Morrison**

*Box 1622*  
**Oakland Ca 94604**

**Reserve your board now!**

Monterey Peninsula Chess Club  
 P. O. Box 261, Monterey, Ca 93940

Please reserve \_\_\_\_\_ board(s) for which I enclose \$ \_\_\_\_\_, \$35.00 each, for the GLIGORICH SIMULTANEOUS exhibition to be held at the Casa Alvarado Chess Center, 487 Alvarado St, Monterey, on Saturday afternoon, February 27, 1971.

name \_\_\_\_\_ (please print)  
 street address \_\_\_\_\_  
 city \_\_\_\_\_ zip # \_\_\_\_\_ phone: \_\_\_\_\_  
 date \_\_\_\_\_