

# The GAMBIT



OFFICIAL PUBLICATION OF THE MONTEREY PENINSULA CHESS CLUB

P.O. BOX 261, MONTEREY, CALIFORNIA 93940

SPONSORED BY THE MONTEREY RECREATION DEPARTMENT

Vol 2 No 4

May 1971

Bill Kennedy

Editor

372 7496

## CLUB OFFICERS

Chuck Nystrom  
Sam Gales  
Bill Kennedy  
Ron Atkinson  
Frank Sutor

President  
Vice-president  
Secretary-treasurer  
Tournament Director  
Team Captain

624 5531  
394 6472  
372 7496  
624 6059  
372 4987

Col C. J. Daly  
Ted Yudacufski  
Bill Kennedy

USCF Regional Vice-president  
USCF Regional Director  
USCF Regional Director

624 7583  
372 9790  
372 7496

Casa Alvarado Chess Center, Box 1308, Monterey, Ca 93940 372 9790

The Monterey Peninsula Chess Club meets each Thursday evening  
at the Casa Alvarado Chess Center, 467 Alvarado St., Monterey



## TOURNAMENT CALENDAR

CLUB CHAMPIONSHIP - Now in progress at the Casa - Ron Atkinson, Director

CHESS MATCH - Salinas CC and the Casa Alvarado - at the Casa June 12th.

MONTEREY INTERNATIONAL OPEN - JUNE 26-27 at the Hotel San Carlos, Monterey

SUMMER RATING TOURNAMENT - USCF - July - August - Ron Atkinson, Dir.

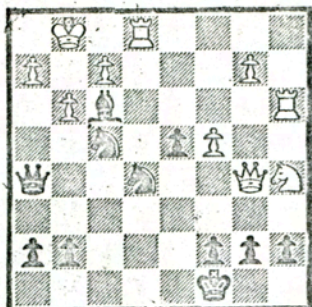
MONTEREY JUNIOR JUBILEE - For Juniors (under 21) USCF - July 10-11 Casa

FIGHT OF THE BUMBLER B - USCF - under 1800 - October 16-17 - Casa

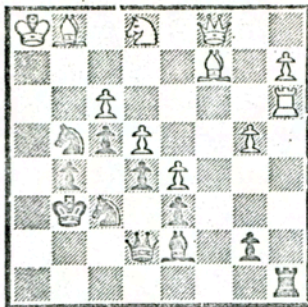
Complete details on any of the above may be obtained from any of your  
Club officers or see the posters at the Casa Alvarado Chess Center.

MONTEREY INTERNATIONAL OPEN. To be held at the Hotel San Carlos in Monterey on June 26-27, 1971. This will be the seventh time that this local chess tournament will be sponsored by the MPCCLUB. You must be a member of, or join at time of registration, the United States Chess Federation. This is a wonderful opportunity for local chess buffs to enjoy playing in what has become an outstanding chess tournament. Under the able direction of our own Ted Yudacufski, the Monterey Peninsula Chess Club will play host to International and National chess players of all strengths. Last year's prize fund was increased over 30% above the guaranteed prize list.

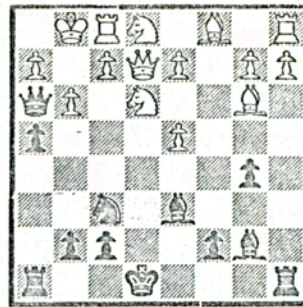
# Announce the Mate!



Black  
Black mates in ... moves



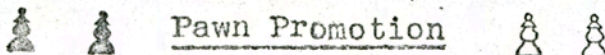
Black  
Black mates in ... moves



Black  
Black mates in ... moves



Continuing our discussion to help the novice chess player understand what to watch for during the progress of the game:



In the last issue it was demonstrated how when the opposing King is within the 'square' it can capture the lone Pawn. But, if the Pawn's King is in position to protect the Pawn it should promote. In the diagram in figure 1 Black is within the 'square'; But, so is the White K, and in position to prevent the Black K from getting in front of the P: 1... K-K2; 2. K-N7! K-K3; 3. P-R4 K-B4; 4. P-R5 K-N4; 5. P-R6 and goes on to the eighth rank to be promoted.



Fig. 1

If White were to push the P at once, in reply to 1... K-K2, then the way could not be kept open and the game would be drawn:- 1...K-K2; 2. P-R4 K-B1!; 3. K-R7 K-B2; 4. P-R5 K-B1; 5. P-R6 K-B2; and the White K is imprisoned and cannot leave the R file to make way for his P. He may stalemate himself by K-R8 and P-R7, but the P can never promote if the Black K stays at B1 and B2. Or, 1...K-K2; 2. P-R4? K-B1!; 3. P-R5 K-N1; 4. P-R6 K-R1 and the Black K may be stalemated but he cannot be forced out of the way of the P. If the adverse K is able to get in front of the RP or confine the White K to the R file (in front of the P) by playing on the B file the limitation of the board favors the weaker force - an exception to the rule.

This situation illustrates the general case of K and P v. K, the P NOT being a RP. (See Fig 2) If White advances his P he draws. But, by playing K-N6 he takes the opposition and wins. Black must now go to either the right or the left letting his adversary take the seventh square on either side, commanding the three remaining squares through which his P must move to promotion. If White were to play P-N6 it would be in the way of his K. Black, moving to R1, would take the opposition, with the White K and P on the same rank and the game would be drawn.

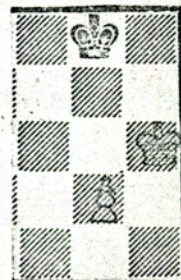


Fig. 2



Mitchell Bedford, Dan Maxwell, and Robert Woronick all tied at four points each in the Casa's Easter 30-30 Crunch ( April 10, 1971 ). Tie-break points gave the winner's crown to Bedford.

Dan Maxwell lead a 20 player field to capture the top spot in the Casa's Beziers Liberation Chess Cup Tournament held on May 8-9, 1971.

Mike Ewell won the Rapid-transit tournament pin for the month of May.

A sharp chess team composed of DLI-WC players tromped the Casa's select team in a match game on May 15. Each sponsor fielded a nine man team. DLI:- Maxwell, Woronick, Kristofferson, Howes, Bundy, Russo, Ollerton, Klinkner and Flynn. Casa:- Lainson, Osborne, Tanaka, Clark, Gerstl, Jones, Reynolds, Campbell and Yudacufski.

Sam Lowe's Salinas Chess Club has challenged the Casa's team to a match in Monterey on Saturday, June 12 (1:30 p.m.)

The Presidio Players participated in a USCF chess tournament at the Presidio's Special Service Club on May 21 and 22. Restricted to only members of the military (the Special Service Club is an affiliate of the United States Chess Federation) the event was directed by Ted Yudacufski. The ten players in the USCF section ended as follows: Woronick 3; Maxwell 3; Wagner 3; Howe 2½; Kristofferson 2; Russo 2; Digrazes 2; Avery 1½; Bundy 1; and Lindberg 0. In a special non-USCF section six players gained some tournament experience by competing in their own tournament.

The following have entered in the GREAT 1971 ALVARADO STREET CHESS CLASSIC \*\*\* and to honor the construction work now going on and blocking traffic on this important Monterey trail the Casa has, at great expense, prepared a very special trophy to be awarded the winner. These players meet on each Wednesday (May 26, June 2, 9, 16 and 23).

M. Ewell	2033	K. Howes	1629	J. Reynolds	Unr
B. Lainson	2017	G. Clark	1523	P. Hallett	Unr
D. Maxwell	1976	A. Gwin	Unr	K. Grover	1259
W. Gray	1969	T. Russo	Unr	A. Lindberg	Unr
M. Bedford	1932	R. Bundy	Unr	M. Gwin	Unr
R. Woronick	1807	G. Jones	Unr	O. Ament	Unr
R. Osborne	1754	G. Gerstl	1451	G. Matheson	Unr
C. Nystrom	1717	P. Grover	1377	C. Bell	Unr



The Club Championship Tournament is nearing the half way point and while no winner can be predicted at this time Richard Osborne seems to have gathered the most points so far. Don Draper, hurrying to complete his scheduled games before half time, played simultaneously against Steve Hand, G. Jones and C. Wagner. Don won all three games.

Except for the Rapid-transit tournament and the six Presidio players entered in their Non USCF tournament, all of the above tournaments are USCF rated tournaments. With all of the new USCF tournament players listed in these tournaments we should have a beautiful turn out of local players for the 7th Annual Monterey International Open to be held at the Hotel San Carlos on June 26-27.

MPCCLUB will need some helping hands to assist with registering the players for the Monterey International Open. And if some one will offer to run the coffee stand we will be able to offer coffee at the tournament site. Any help will certainly be appreciated.

## AN EDITORIAL

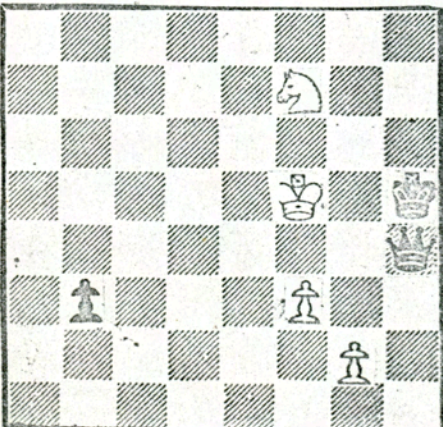
It seems a shame, that, with the tremendous interest of local chess buffs in the Royal Game, we are unable to get more than a casual 'filler' of information in the local papers on international, national and local chess activities. Bumber stickers have received more notice than the Candidate Matches. The editors cannot be aware of the number of locals interested in Chess and now have to purchase a Los Angeles or a San Francisco paper to read what's going on in the Chess world. Bobby Fischer, representing the USA, battles with Mark Taimanov, of USSR, at Vancouver, B. C., Canada, and wins six in a row. But you didn't read about it in the Monterey Peninsula Herald. You had to purchase an out-of-town paper to find out how the next World's Chess Champion crushed the Russian. We wonder if our newspapers will print anything about the upcoming Fischer-Larsen match. There is every possibility that this match will be held in the USA. Maybe even in California. Maybe it could be held in our own Monterey. All it takes is a proper bid. And a bit of newspaper coverage.

We should get together and drop the editor of the Herald a line. Let him know that we would appreciate more coverage, in that newspaper, on the game of Chess. We should request that they consider Ted Yudacufski as the spokesman for the local chess players. Ted has submitted some column copy for their consideration without arousing their interest. What has to be done is for each of us to write the Editor of the Herald and explain our desire for some Chess coverage in his newspaper. Write to: Editor, Monterey Peninsula Herald, Postoffice Box 272, Monterey, California 93940.

### MORE CHESS TOURNAMENTS:

The California Junior State Chess Championship will be held over the weekend of June 25 to 27 in the Memorial building of Los Angeles High School, 4600 Olympic Blvd, Los Angeles. Register at the tournament site Friday, June 25, starting at 5:30 p. m. No entry fee. Anyone under 21 years of age can enter. Must be member of USCF and California Chess Federation, or join at time of registration. Winner receives \$100 and trophy. Second place receives \$50 and third place \$25. Time 45 in 1½ hours.

The Santa Monica Bay Chess Club will sponsor the 1971 Pacific Southwest Open at the Miramar Hotel, Ocean Ave and Wilshire in Santa Monica on July 2 - 5, 1971. Seven rounds Swiss. 40 in 2. \$2,000.00 guaranteed prize fund. First \$500; 2nd \$300; Third \$100. Cash and trophies to class winners. EF \$20; Jrs (under 18) \$12; Jrs (under 14) \$8. USCF required. Advance entries to : D. W. Bragg, 7381 W. Manchester Ave Los Angeles, Ca 90045. William N. Bragg, Tournament Director (phone 645-6741). Room reservations (Singles \$14; Twin or double \$18) write direct to Hotel Miramar, (telephone 213-394-3731). Mention the Tournament. Rd 1 starts at 8 p. m. Friday nite. Make EF (advance) to Santa Monica Bay Chess Club.



(From the Personality of Chess) A Pawn would win but the Queen loses. But this is rentless! A Pawn? A miserable Pawn, not even on the verge of promotion, is putting the Queen to shame??? How??

This way: 1. P-N4ch QXP (forced) 2. PXQch K-R5; 3. N-K5 P-N7; 4. N-B5 ch K-any and its all over for Black. (If 3... K-N6, White of course, continues 4. N-Q3 and Black is kaput.

# 7th Annual Monterey International Open Chess Tournament - June 26 & 27, 1971

presented by the  
**MONTEREY PENINSULA CHESS CLUB**  
In the Pacific Room of the Hotel San Carlos  
Franklin and Calle Principal, Monterey, California

Tournament Director: USCF Region VIII & California State Chess  
Federation Director Ted Yudacufski



## TOURNAMENT SCHEDULE

## FIVE ROUNDS SWISS

**SATURDAY, JUNE 26, 1971**

8:30 a.m. to 10:30 a.m.—Registration at Hotel San Carlos Pacific Room  
10:45 a.m.—Players Meeting in Pacific Room



11 a.m.	Round 1	40 moves in 1½ hours	SUNDAY, JUNE 27, 1971	9 a.m.	Round 4	45 moves in 2 hours
3 p.m.	Round 2	40 moves in 1½ hours		2 p.m.	Round 5	45 moves in 2 hours
7 p.m.	Round 3	45 moves in 2 hours				

## \$800 GUARANTEED PRIZE FUND

MORE IF  
ENTRIES PERMIT

1ST PRIZE	\$200 plus TROPHY
2ND PRIZE	\$100
3RD PRIZE	\$ 65
4TH PRIZE	\$ 50
CLASS A 1ST	\$ 50 plus TROPHY
CLASS A 2ND	\$ 25
CLASS B 1ST	\$ 50 plus TROPHY
CLASS B 2ND	\$ 25
CLASS C 1ST	\$ 50 plus TROPHY
CLASS C 2ND	\$ 25

CLASS D AND UNDER - 1ST	\$ 40 plus TROPHY
CLASS D AND UNDER - 2ND	\$ 20
WOMEN'S 1ST	\$ 40 plus TROPHY
UNRATED 1ST	\$ 30 plus TROPHY
JUNIOR 1ST (JR.-UNDER 18)	\$ 30 plus TROPHY
PRIZE TO WINNER OF UPSET GAME	
TROPHY TO BEST MONTEREY PLAYER	



Advance, \$13;  
After JUNE 24, \$15.  
Juniors (under 18), \$9;  
After JUNE 24, \$11

Must be member of, or join at time of registration, the United States Chess Federation.

For room reservations write directly to Hotel San Carlos, Box 551, Monterey, Calif. 93940. PLEASE MENTION THE CHESS TOURNAMENT. Rates start at:— Singles, \$10 Double, \$13; Twin, \$14;

Players are requested to bring Staunton style chess sets and timers.

Special Rapid-Transit Tournament will be held at the Casa Alvarado  
Chess Center, 494 Alvarado St., Monterey, at 8 p.m., Friday, June 25  
Ted Yudacufski will direct. Cash prizes for winners.

To: Monterey Peninsula Chess Club  
P.O. Box 261  
Monterey, Calif. 93940

Yes, here is my advance entry for the 1971 Monterey International Open Chess Tournament at the special money saving rate.

Enclosed entry fee: \$ \_\_\_\_\_

NAME \_\_\_\_\_ USCF RATING \_\_\_\_\_

ADDRESS \_\_\_\_\_

CITY \_\_\_\_\_ ZIP \_\_\_\_\_ BIRTH DATE \_\_\_\_\_  
(under 18)

MONTEREY INTERNATIONAL  
OPEN CHESS TOURNAMENT  
Post Office Box 261  
Monterey, California 93940



M. Morrison  
Box 1622  
Oakland Ca 94604

Chess Voice

My schedule

from 4:15 to

on 4:15 to 4:30

only

Full schedule to do

check with only

under on schedule

to hold no other

and CCA B?

of 4:15 - very fast

to do with

date / schedule?