

THE CHESS-PLAYER.

All communications for this department should be addressed to "J. E. Tippet
P. O. Box 2546, San Francisco, Cal." Original problems, games, solutions,
and correspondence on Chess matters solicited.

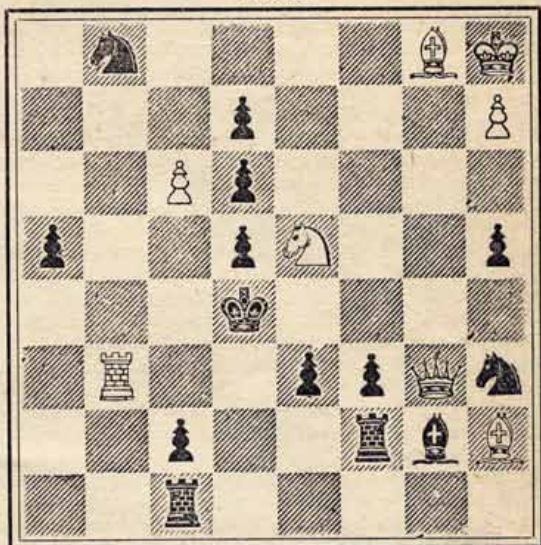
Problem 200.—By W. A. Shinkman, Grand Rapids, Mich.

WHITE—King at KKt4; Queen at QKt3; Bishops at KB sq, KKt sq;
Knight at Q5.

BLACK—King at K5; Bishop at KR8; Knights at Q2, QKt7; Pawns
at K3, K4, KKt6, Q3, QKt4, QKt5.

White to play and mate in two moves.

Problem 201.—By C. H. Wheeler, Forest Hill, Ill.
BLACK.



WHITE.

White to play and mate in three moves.

Solutions of Problems.

No. 190— 1—Q R5

No. 191— 1—Kt Q7
2—Q x P ch
3—R mates.

1—R x Kt (a, b)
2—K x Q

(a) 1— 1—K Kt7
2—R R2ch 2—K moves
3—Q or Kt mates.

(b) 1— 1—P moves
2—Q Kt3 ch 2—Any
3—Q mates.

NOTICE TO SOLVERS.—Commencing with this issue, solutions will
be hereafter acknowledged at the time of publication of solutions to
problems.

Nos. 190 and 191 were solved by H'y Dobinson, Oakland. All other
solutions have been hitherto acknowledged. No. 191 was solved by
James Harvey, Nanaimo, B. C.

To Correspondents.

W., Tombstone, A. T.—Many thanks for your compliment, which
is exceedingly gratifying.

Game No. 98.

Played in the correspondence tourney for the prize of the President of the Republic, between Messrs. Courel of Lisieux and Zani of Besançon. Game and notes (partial) from *La Stratégie*:

FRENCH DEFENSE.

<i>White.</i>	<i>Black.</i>	<i>White.</i>	<i>Black.</i>
Courel.	Zani.		
1—P K4	1—P K3	13—B K Kt4 (g)	13—Kt K Kt3
2—P Q4	2—P Q4	14—Q Q2	14—P K R3 (h)
3—P x P (a)	3—P x P	15—B x Kt	15—Q x B
4—B Q3 (b)	4—B Q3 (c)	16—Kt K Kt3	16—Kt K B5
5—Kt K B3	5—Kt K B3	17—R K3	17—P K Kt3
6—Castles	6—Castles	18—P Q B4	18—P x P
7—Kt Q B3	7—Kt Q B3 (d)	19—Kt K4	19—Q Q sq
8—B K Kt5	8—B K Kt5	20—Kt x B	20—Q x Kt
9—R K sq (e)	9—K R sq (!)	21—B Q7	21—Q K B3 (i)
10—Kt K2	10—B x Kt	22—K R sq (j)	22—K R Q sq
11—P x B	11—R K sq	23—B Q R4	23—R x P
12—B K B5 (f)	12—Kt K2	24—Q Q B3	24—Kt Q4

and White resigns.

(a) It is better to play Kt Q B3.

(b) Weak. The correct move is Kt K B3.

(c) Black should take advantage of White's last move to play 4—P Q B4; 5 P x P, B x P; 6 Kt K B3, Kt K B3; 7 Castles, Castles. The isolated black pawn is very strong, as it can be easily protected and permits at a favorable moment the play of Kt K5; further, Black's K B is better placed for attack than that of his opponent.

(d) The correct move, much preferable to P Q B3 to which White could reply, Kt K2 followed by Kt K Kt3.

(e) The stronger continuation is 9 K R sq, B K2 (best); 10 R K sq, etc.

(f) Weak; the right move was 12 P Q B3, followed by Kt K Kt3, with an excellent game.

(g) Again a weak move; Q Q3 was much better.

(h) Correctly played; this move leaves White without expedient.

(i) Black has played the game remarkably well.

(j) It is evident that if R x R ch, then R x R and the Bishop can not take the Rook because of Q Kt4 ch and mate in three moves.

In the Steinitz-Zukertort match, play began on Monday, January 11th. Zukertort, winning the move, opened with Queen's Gambit, which Mr. Steinitz declined. The game was won by Mr. Steinitz. The second game, played on the 13th instant, was opened by Mr. Steinitz with the Scotch Gambit, the game being won by Dr. Zukertort after forty-six moves. We hope to be able to give our readers the first and second games in our next issue.

We acknowledge the receipt of the *Kings County Gazette*, Flatbush, L. I., which contains its initial chess column. The salutatory of the editor has the right ring, and we gladly welcome him to the ranks of the workers in the cause of the noble game.

N. D. Cowan, City of Mexico, announces the early publication of a book entitled "Chess Blunders." All games wherein the great masters have made mistakes and were defeated will be embraced in the work.

Steinitz says that he "would rather die in the United States than live in England." Probably many English players much prefer that he should.

"The successful player exalts himself by pointing out beauties in his opponent's play; the unsuccessful excuses himself by indicating defects."

On Thursday afternoon Messrs. Sharon and Newlands decided that the bequest of the late Wm. Sharon to Golden Gate Park should take the form of a marble arch at the entrance to the park.