

Wilshire Chess Society Newsletter



OFFICERS

President & Editor-Michael Jeffreys
(310) 473-6291
MJeffrey@ix.netcom.com
www.geocities.com/mjshark1
Assistant T.D.- Elliot Landaw (310) 552-4538

Vol. 8-10: October 2002

GM Eduard Gufeld 1936 - 2002

GM Eduard Gufeld passed away on September 23 at Cedars-Sinai Hospital in Los Angeles. He was 66 years old. He was born March 19, 1936 in the Ukraine. He became an IM in 1964 and a GM in 1967.

Gufeld was a complex man, who at times could be very kind and other times abrasive. I can still hear him uttering, in his thick Russian accent, his now infamous saying, "My friend, dis is not chess!" when he would lose a tough game. And he would sometimes berate his students for playing bad moves, yet this was more out of wanting them to play better than to purposely hurt their feelings. To say that he loved the game of chess was an understatement. Gufeld gave his whole life to chess!



GM Gufeld

I saw his lectures on several occasions at the American Open. While he was able to lecture to beginners, i.e., "The king is like a baby in the opening, so you must put zee baby to bed" (castle), my favorite Gufeld lectures were when he would show his own games, like when he beat Smyslov or his famous Mona Lisa game. During these talks, his cherubic face would light up like a kid on Christmas morning, his cheeks rosy, chest puffed out, as he would proudly show you his moves. His enthusiasm for the game of chess was both admirable as well as contagious. Not shy when it came to peddling his wares, he would often come up to me to sell me his latest book out of his briefcase or paper bag at tournaments. Sometimes I bought, like when he was selling a deck of FIDE playing cards with tactical chess puzzles on them, or his little book on tactics, Improving at Chess which is excellent.

Unlike many lesser lights, Gufeld was willing to donate his time when it came to promoting chess. When I emceed the Grand Opening of the Santa Monica Chess Park a few years ago, Gufeld was also there busily giving a free simul to all who wanted to play. He also authored dozens of books on chess which are filled with stories and anecdotes, like the time he "fell in love" with a beautiful woman at a chess tournament, only to feel her rebuke as she hung her queen while he was watching her game! And, of course, if you are a King's Indian player, than his books are a must. Truly there was only one Eduard Yefimovich Gufeld, and his bigger than life personality, great creative attacking games, and unique sense of humor, will always be remembered.

On the back are some Gufeld "finishes" that I picked at random from chessbase. Enjoy!

-
- Congrats! to the winners of our September 29th
- Tournament: Quad 1: **Rich Henderson**; Quad
- 2: **Eric Leung**; Quad 3: **Arthur Skurskiy**
-

See you October 27! Michael Jeffreys

Chess Academy
EDUARD GUFELD
INTERNATIONAL CHESS GRANDMASTER, CHESS TRAINER
AUTHOR, JOURNALIST
1335 N. La Brea Av # 307
LA CA 90028
323 (213) 883-0164
fax (213) 883-0164 * 51
CHESS LESSONS, COACHING

**Next W.C.S. G/45 Tournament
October 27, 2002 - Sunday**

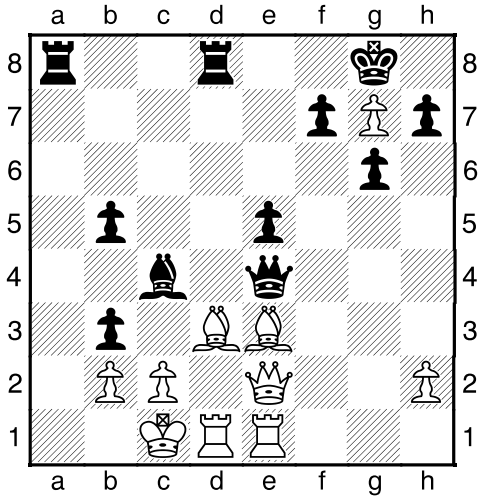
Westside Pavilion, Community Room "C"
10850 W. Pico Blvd., West Los Angeles
(3rd Flr., West of Barnes & Noble, next to
the SPCA pet adoption center)
Registration 10:30 am
Games from 11:00 am - 4:30 pm, 3-rounds
Round robin quads (groups of 4) by rating

Time control: G/45 mins. Entry fee: \$20.00
Prizes: \$50.00 per quad (35.00 1st, 15.00 2nd)
WCS Membership required (\$15.00/year) as
well as U.S.C.F. Membership (\$40.00/year).

✓ out the WCS website at: www.geocities.com/mjshark1 (Interviews with IM's Silman & Peters now posted.)

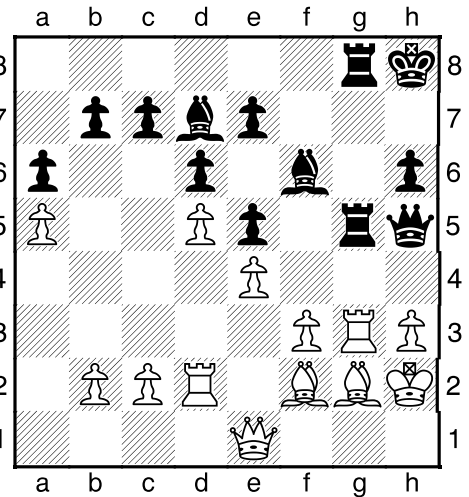
Four Gufeld Finishes

A.
(Black to move and win)



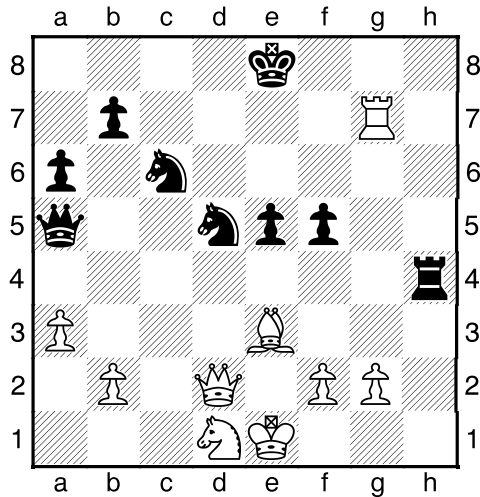
Tokarev – Gufeld,E
UKR–ch Ukraine, 1954

B.
(Black to move and win)



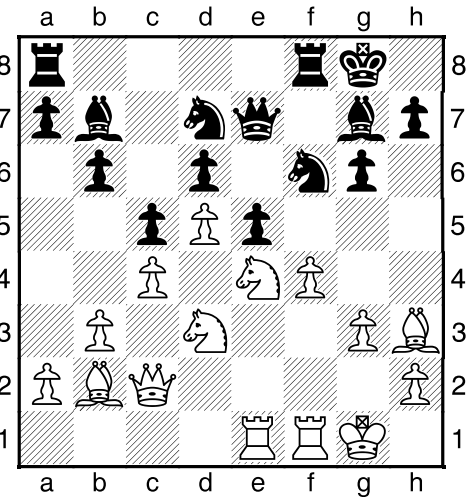
Benjamin,J (2591) – Gufeld,E
Las Vegas op Las Vegas (6), 2000

C.
(Black to move and win)



Bastrikov,G – Gufeld,E
URS–ch sf Tashkent, 1958

D.
(White to move and win)



Gufeld,E – Nakamura,C
Hawaii op Honolulu (3), 1996

*"Chess is art, born out of struggle."
-Eduard Gufeld*

Solutions

- A)** 1... Ra1+ 2.Kd2 Bxd3 3.cxd3 Qb4#
- B)** 1...Rxc3 2.Bxc3 Rxc3 3.Qxc3 Bh4 0-1
- C)** 1... Rh1+ 2.Ke2 Nd4+ 3.Bxd4 [3.Kd3 Qb5#]
3...Nf4+ 4.Ke3 Re1+ 0-1
- D)** 1.Nxd6 Qxd6 2.fxe5 Nxe5 3.Bxe5 Qd8 4.Nf4 Nh5
5.Be6+ Kh8 6.Nxc6+ hxg6 7.Qxc6 Nf6 8.Rf4 1-0

150 Deadly Opening Traps by Michael Jeffreys

(Win your Games Faster With These Deadly Traps!)

- 166 large 8 1/2 x 11 size pages
- Spiral bound - pages lay flat for easy studying (& Lg. Diagrams)
- 44 Openings covered
- Includes *The 7 Critical Questions to Ask Yourself Before Grabbing Material*

Order Your Copy Today! Only
\$19.95 plus \$4.95 shipping

Send Check to:

Powerful Magic Publishing, 1516 Purdue Ave. #7, L.A., CA 90025 (All orders shipped Priority mail within 48 hours)

