

Wilshire Chess Society Newsletter



OFFICERS

President & Editor-Michael Jeffreys
(310) 473-6291
MJeffrey@ix.netcom.com
www.geocities.com/mjshark1
Assistant T.D.- Elliot Landaw (310) 552-4538

Vol. 8-12: December 2002

Like Blitz? Great. Then show up at our WCS Blitz Championship on December 22, 2002...if you have the guts!

On December 22 we will be holding our 3rd annual WCS Blitz Championship. The winner of the first one was Alex Khitin, and last year we had a tie between Carl Hyne and Bill Penucci (although Hyne won the blitz playoff to be named 2002 champ.) Who will be our 2003 blitz champion? Will it be you? The only way to know for sure is to come out and play. Also, bring your friends along, as the more people who enter, the bigger the prize fund (1st, 2nd, and 3rd place \$ prizes will be awarded).

To make it fairer for the lower rated players, we will be deducting 1 minute off the clock for each 200 pts. rating difference between opponents. (The max is 5-2). To help motivate you, here are some photos I took with my new Nikon Coolpix 4300 digital camera at the November tournament. Go to our website to see them in color!



IM Tim Taylor



Daniel Berman vs. Rich Henderson



Mansour Bighamian



Alan La Combe



Julian Landaw

-
 ● Congrats! to the winners of our November 24 ●
 ● Tournament. Swiss: **Tim Taylor** (1st), **Masour** ●
 ● **Bighamian & Daniel Berman** (tie for 2nd); ●
 ● Quad 1: **Matt Witten**; Quad 2: **John Rolston** ●
 ●.....

See you December 22! -Michael Jeffreys



John Rolston vs. Zack Witten



Chad Salinas vs. Matt Witten

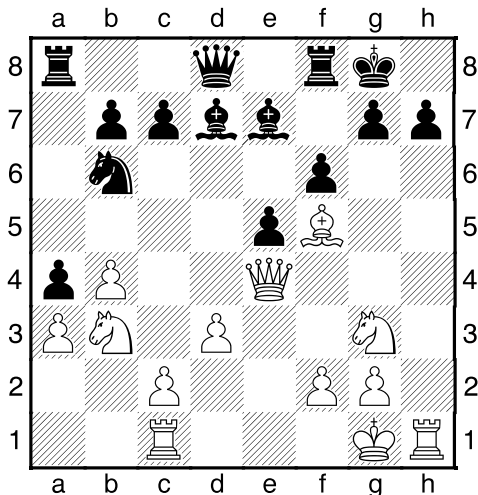
3rd W.C.S. Blitz Championship! December 22, 2002 - Sunday

Westside Pavilion, Community Room "C"
10850 W. Pico Blvd., West Los Angeles
(3rd Flr., West of Barnes & Noble, next to
the SPCA pet adoption center)
Registration 10:30 am
Games from 11:00 am - 3:00 pm aprox.

Time control: G/5 mins. Entry fee: \$20.00
Prizes: 1st, 2nd, & 3rd (amt. depends on turn
out - more entries = bigger prize fund!)
WCS Membership required (\$15.00/year),
U.S.C.F. Membership is NOT required.

Puzzle of the Month

One of the benefits of running the Wilshire Chess Society for the past 8 years has been to watch certain chess players grow. One player who has grown both in size and strength is Julian Landaw, aka "Little Landaw" (as Carl Hyne, aka, "The Great Carlini" calls him). Although he is only 12 years old, he already has an elo rating of over 2000! A few months ago I was at the L.A. Open chess tournament when Julian was showing off his newest creation, the White to move and mate in X problem below. FM Emery Tate was so impressed after seeing the solution that he said, "I think this deserves some applause" and began clapping! Good luck (and no looking at the solution until you've given it a good a try!).



White to play

(Created by Julian Landaw)

Julian says: "White is clearly winning, but what is the quickest road to mate against best defense?"

Solution:

The first few moves are natural, forcing black's king to scurry to the center to avoid a quick mate.

1. Bxh7+ Kf7 if 1 ... Kh8 2. Bg6+ Kg8 3. Qh4 threatening 4. Qh8#. 3. Nd4+ Kd6. crushing but not as fast. 2. Bg6+ Ke6 if 2 ... Kg8 3. Qh4, still threatening 4. Qh8#. 3. Nd4+ Kd6. Fortunately, 4. Qd5!! kills. 4 ... Kxd5 if 4 ... Nxd5 5. Ne4#. 5. c4+! Nxc4 if 5 ... Kxd4 6. Ne2#. 6. dxc4+ Kxd4 if 6 ... Kd6 7. Ne4#. 7. Ne2#. With the help of almost every single white piece, white is able to crush the king in the middle of the board. A stunning queen sacrifice has finished the game quickly.

Michael Jeffreys latest Book:

150 Deadly Opening Traps

(Win your Games Faster With These Deadly Traps!)

- 166 large 8 1/2 x 11 size pages
- Spiral bound - pages lay flat for easy studying (& Lg. Diagrams)
- 44 Openings covered
- Includes *The 7 Critical Questions to Ask Yourself Before Grabbing Material*

Order Your Copy Today! Only **\$19.95 plus \$4.95 shipping**

Send Check to:
Powerful Magic Publishing, 1516 Purdue Ave. #7, L.A., CA 90025 (All orders shipped within 48 hours)