

CHESS

By E. J. CLARKE

Ballot Chess, the idea of which originated with Stasch Miotkowski of Camden, N. J., will be given a trial at the Mechanics' Institute Chess Club. In this tournament, players will draw from 200 cards corresponding to 200 openings, as outlined by Mlotkowski in his system published recently by "The Gambit" and reviewed in this column February 5 last. Contestants will not know the opening till immediately before play.

* * * *

Wallace E. Neville, one of the Old Guard of the Mechanics' Institute Chess Club, took on fourteen players in a simultaneous exhibition last Saturday evening, winning ten, losing three, while one game was drawn. Neville recalls a similar exhibition almost exactly twenty-three years ago in which he allowed but one drawn game—to A. B. Stamer, then a youthful enthusiast. That was the year before the disastrous fire. Neville had made a bid for fame with his "Chess Humanics," characterized by Dr. Lasker in his magazine as "the best and most thorough comparison between the game and underlying laws of human life that has ever been produced." Unfortunately nearly all the edition "circulated" in smoke.

* * * *

Game No. 97

A highly exciting game played in the Vienna Tournament of 1923, in which complications become bewildering. This game refutes the idle notion that chess is exhausted.

ZUKERTORT

Reti White	Becker Black	Reti White	Becker Black
1 S-KB3	S-KB3	16 P-B3	P-S5
2 P-B4	P-B4	17 S-S5(a)	SxKPch
3 P-KS3	P-KS3	18 K-B2(b)	SxP
4 B-S2	B-S2	19 PxB	SxB
5 S-B3	S-B3	20 Pxs	Q-K3
6 P-Q3	Jastles	21 S-B5	QxBPch
7 B-K3	P-Q3	22 K-S	QxKPch
8 P-KR3	B-Q2	23 K-R	PxP
9 Q-Q2	R-S	24 BxB	SxB
10 B-R6	S-K	25 SxS	KxS
11 PKR4	B-S5	26 Q-R6ch	K-S(c)
12 P-R5	PxP	27 QR-S	K-R
13 S-KR4	Q-Q2	28 RXP	QxKRch
14 B-K4	S-Q5	29 QxQ	R-S
15 Cstls(QP-QS4)		30 RxRch	Resigns.

NOTES

(a) If 17 S-Q5, SxPch; 18 K-B2, Q-R5ch and wins.

(b) If K-S, S-B6ch wins.

(c) It is not surprising, says Chess of Today, from which score and notes are taken, to learn that in this most difficult game both players were short of time. Here K-R is much better. Then if 27 SxQP, Q-S3; 28 Q-B4, Pxs; 29 RxP, and probably draws.

* * * *

Game No. 98

Played in pending major tournament at Mechanics' Institute. The State champion was lucky to get away with a draw.

SICILIAN

H. Legler White	E. Gruer Black	H. Legler White	E. Gruer Black
1 P-K4	P-QB4	18 P-QB3	KR-Q
2 B-B4	P-K3	19 Q-B	S-K2
3 S-QB3	P-QR3	20 B-S	Q-S5
4 P-Q3	P-QS4	21 P-KR3	Q-R4
5 B-S3	B-S2	22 B-K4	BxB
6 Q-K2	B-K2	23 RxB	R-Q4(?)
7 S-B3	P-Q4	24 KR-K	QR-Q
8 PxP	PxP	25 K-R2	R(Q)-Q2
9 P-QR3	P-B5	26 P-S4	Q-S3
10 B-R2	S-KB3	27 P-S5	Q-R4
11 Castles	Castles	28 PxB(a)	QxS
12 PxP	QPxP	29 Pxs(b)	QxPch
13 B-B4	R-K	30 K-R	Q-B6ch
14 Q-Q2	Q-B	31 K-S	R-S4ch
15 QR-K	S-B3	32 BxR	Q-S6ch
16 S-K4	Q-B4	33 K-E	Q-B6ch
17 SxSch	BxS		

Drawn by perpetual check.

NOTES

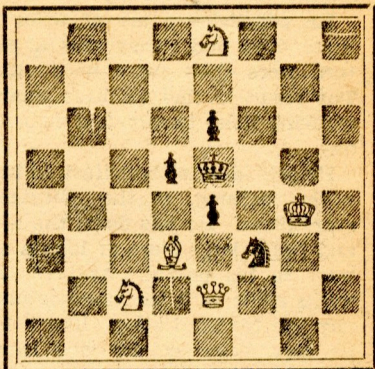
(a) Legler points out the following win: 28 K-S2, Q-S3; 29 S-R4, Q-R4; 30 PxB (b) White can still win by 29 Q-K3, QxQ; 30 R(K)xQ, S-S3; 31 R-K8ch, S-B; 32 R-S3, R-Q; 33 RxPch, K-R; 34 RxR and RxBP.

PROBLEMS

A. J. F.

No. 101—W. Nanning

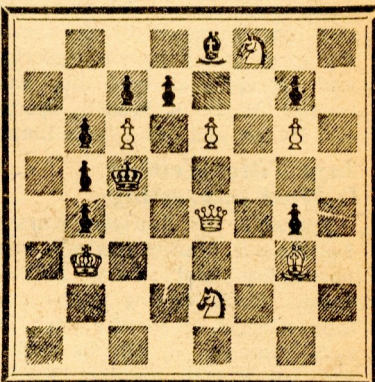
"Handelsblad"—1917



W5-B5—Mate in two

No. 102—W. A. Shinkman

"Detroit Free Press"—1885



W8-B9—Mate in two

Solutions—No. 99, Q-KS7; No. 100, R-QB5.

Re No. 94—It appears as if a black pawn should occupy Q3 to prevent a dual continuation after P-R6, viz: Q-R7 or K-B61.

C. T. Vandervort (94, 95, 97), San Rafael; G. C. Fish, Oakland (94, 97). Re, No. 91, solved by R-QS4, R-KB4, will not unravel. P. L. Davis Jr. (96); A. Berkowitz, Palo Alto (98), "All variations prepared, and remain so after key." Q. M. Spencer, Vallejo (94, 97), "You are correct; black has nine men in No. 97, therefore: W10-B9.

H. F. M., Mill Valley; R. W. King, Willets; S. L. Bailey, Roseville; J. O'Loughlin, city; W. L. Pedrick, Ferndale; P. Bowater, Pasadena; J. E. E., Los Gatos; G. Pring, Alameda; N. Rosonoer, Petaluma.