

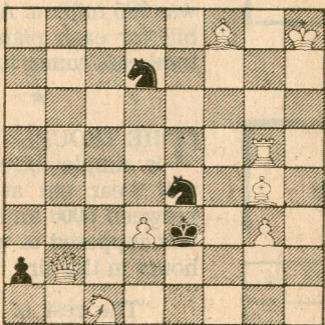
26.7.79

Chess

By George Koltanowski

PROBLEM

BY W. Rudenko, USSR



White to play and mate in two moves.

READERS SEND IN

Dr. M. B. Shimkin of the University of California, San Diego, sent the following "old-timer" played in the North-South match in San Luis Obispo in 1934!

White: Dr. M. B. Shimkin (N). Black: N. Austrian (S)

1.P-K4	P-QB4	13.N-K4	K-N2
2.N-KB3	N-QB3	14.N-B5	R-R2(b)
3.P-Q4	PxP	15.O-O-O	R-Q1
4.NxP	N-KB3	16.P-KR4	B-N2(c)
5.N-QB3	P-K3	17.R-R3	N-K4
6.N4-N5	P-QR3	18.R-R3	R1-QR1(d)
7.N-Q6ch	BxN	19.P-KB4	N-B5
8.QxB	Q-K2	20.R-N3ch	K-R1
9.P-K5	QxQ	21.NxQP	B-Q4
10.PxQ	O-O(a)	22.BxN	RxN
11.B-KN5	P-QN4	23.BxB	PxB
12.BxN	PxB	24.RxP	Resigns(e)

(a) Immediately 10 ... P-QN4 followed by 11.B-N2 is slightly better.

(b) Black has a tough time getting his Bishop developed.

(c) At last, but at what amount of "time" loss?

(d) White threatened 19.BxP. If 18 ... N-B5; 19.BxN,PxB; 20.NxB,RxN; 21.RxP.

(e) A well played game by White!

SOLUTION to Problem: 1.B-R6.