

# CHESS

By E. J. CLARKE

The Chess Editor was agreeably surprised to discover the Max J. Kuhl Memorial Collection of rare books and reproductions housed in the south wing of the San Francisco Public Library. We understand that a catalogue is in the making. Mr. Kuhl, a prominent figure in the civic and social life of San Francisco, was also an enthusiastic devotee of Caissa. He was a member of the Mechanics' Institute Chess Club and rarely failed to enjoy a game or two every afternoon after leaving his law office. Mr. Kuhl was a strong chess player and his grasp of the game so complete that he was ready with his reply almost before his opponent's hand had quitted the piece. Very few were the Institute chess players who could hold their own with him in the rapid-fire game and Mr. Kuhl's humorous baiting of a luckless antagonist who became lost in the mazes and began to wobble is well remembered. On such occasions his favorite phrase, "Squarely down!" usually set the chessroom in a roar, and like as not was soon followed by a ridiculous blunder on the part of his crestfallen opponent. Although it has been some time since Mr. Kuhl left us, he is still held in affectionate remembrance at the Mechanics' Institute Chess Club.

\* \* \* \*

It is with sincere regret that we record the passing of C. H. Kunze, a member of the Mechanics' Institute Chess Club and a well-known San Francisco newspaper man. Mr. Kunze had a very high opinion of the cultural value of chess and early taught his children a knowledge of his favorite game.

\* \* \* \*

## GAME NO. 142

United States Champion Frank J. Marshall was awarded the brilliancy prize at Bad Kissingen for his fine victory over Aaron Nimzowitsch in the following game—quite in Marshall's pre-war style:

Nimzo-	Marshall	Nimzo-	Marshall
witsch		witsch	
1 P-Q4	S-KB3	14 P-QR3	SxP!
2 P-QB4	P-QS3	15 RxS	QxR
3 S-QB3	B-S2	16 PxS	QxP
4 B-S5	P-K3	17 Q-Q	KR-Q
5 Q-B2	P-KR3	18 Q-K2	Q-B5ch
6 B-R4	B-K2	19 K-B2	P-QR4
7 P-K4	Castles	20 PxP	RxP
8 P-K5	S-Q4	21 S-B3	R-R3
9 B-S3	S-S5	22 K-S3	P-QS4!
10 Q-S3	P-Q4	23 Q-K5	PxPch
11 PxPe.p	BxP	24 K-S4	Q-B8
12 Castles(Q)	QS-B3	25 S-QS5	P-QB4ch
13 BxB	QxB		(a)

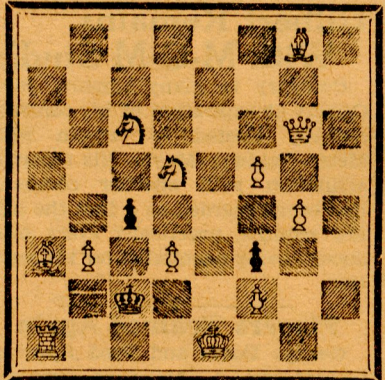
(a) Between the Scylla of mate if 26 QxP, or the Charybdis of loss of queen if 26 KxP.

## PROBLEMS

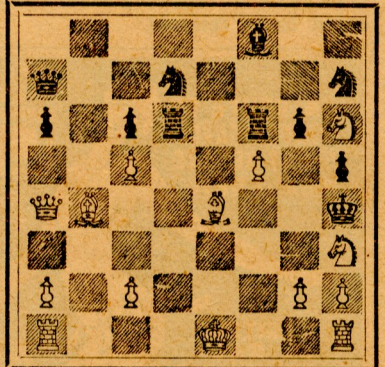
A. J. F.

Alain C. White's Christmas series for 1928 comes in the form of "The Properties of Castling," problems involving at some stage or other the act of castling, as the title would indicate. Castling problems are given for today's selection.

No. 167—By A. F. Mackenzie



W12-B3—Mate in Two  
No. 168—By A. C. White



W14-B11—Mate in Three

Solutions: No. 165—Q-B. No. 166—Black wins! 3 . . . QxPch!; 4 SxQ, S-B6ch, and knight mates.

Solvers' list: Leonidas Penn, Lower Lake; R. Dunipace, Palo Alto; A. R., city; Lewis B. Hart, Newman; R. W. King, Willets; Rev. Blake Harlow, Auburn; R. W. Shaw, city; Merle Walters, Oakland; Marshall's "Chess Masterpieces" may be had from Simon & Schuster, 37 West 57th street, New York city.