

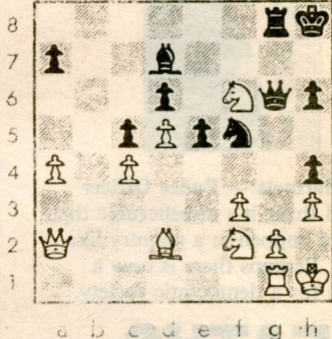
Chess



By Frisco Del Rosario

FEDDER-WESTERINEN

Black to play and win.



BISHOP'S GAMBIT — YESTERDAY & TODAY

A favorite opening of the great attacking masters 100 years ago, the Bishop's Gambit is enjoying a resurgence of popularity among today's young grandmasters. Icelandic GM Johann Hjartarson (a world championship candidate), 26, Bulgaria's 14-year-old international women's master Judit Polgar and GM Heikki Westerinen (four-time Finnish champion, still young at 45) are all enterprising players and employ the gambit at the highest levels of competition.

The King's Gambit begins 1. e4 e5 2. f4. White intends to form a pawn center by deflecting Black's e-pawn then later playing d4. White also plans to use the open f-file to attack f7, the weakest square in the enemy position. After 2...ef, 3. Bc4 is the Bishop's Gambit, developing the bishop towards f7 and making Black's ...d5 counterthrust more difficult to realize. The resulting play is always lively. Here is the most famous Bishop's Gambit in history — Anderssen's "Immortal Game."

London 1851

White: Adolf Anderssen

Black: L. Kieseritzky

King's Gambit

- | | |
|------------------------|---------------------------|
| 1. e4 e5 | 13. h5 Qg5 |
| 2. f4 ef | 14. Qf3 ² Ng8 |
| 3. Bc4 Qh4 | 15. Bf4 Qf6 |
| 4. Kf1 b5 | 16. Nc3 Bc5 |
| 5. Bb5 Nf6 | 17. Nd5 Qb2 |
| 6. Nf3 Qh6 | 18. Bd6! Bg1 ³ |
| 7. d3 Nh5 ¹ | 19. e5! ⁴ Qa1 |
| 8. Nh4 Qg5 | 20. Ke2 Na6 ⁵ |
| 9. Nf5 c6 | 21. Ng7 Kd8 |
| 10. g4 Nf6 | 22. Qf6! ⁶ Nf6 |
| 11. Rg1 cb | 23. Be7# |
| 12. h4 Qg6 | |

Belgrade 1989

White: Heikki Westerinen

Black: Franzen

King's Gambit

- | | |
|------------|-----------------|
| 1. e4 e5 | 9. dc Nc6 |
| 2. f4 ef | 10. Ne5 Qf5 |
| 3. Bc4 d5 | 11. Ke1 Qc2? |
| 4. ed Qh4 | 12. Nc3 Bd7 |
| 5. Kf1 f3 | 13. Nc6 Bc6 |
| 6. Bb5 c6 | 14. Bd3 Bg2 |
| 7. Nf3 Qh5 | 15. Rg1 Resigns |
| 8. Qe2 Be7 | |

NOTES:

- Again, White's strategic aims are the creation of a pawn center and the opening of the f-file. Black attempts to maintain the important f-pawn.
- Threatening both Bf4, trapping the queen, and e5, with attacks on both rook and knight.
- 18...Bd6 19. Nd6 Kd8 20. Nf7 Ke8 21. Nd6 Kd8 22. Qf8# or 18...Qa1 19. Ke2 Qg1 20. Ng7 Kd8 21. Bc7#
- Sacrificing another rook while cutting the queen off from the defense of g7.
- Guarding c7. Black can't make a flight square on c8 with 20...Bb7 because of 21. Ng7 Kd8 22. Qf7 Nh6 23. Ne6! Kc8 24. Ne7# (23...dc 24. Qe7, etc.)
- White has sacrificed a bishop, two rooks and a queen!

SOLUTION: 1... Ng3! 2. Kh2 Nf1 3. Kh1 (3. Rf1 Qg2#) Qg3 4. N2g4 Qh2! 5. Nh2 Ng3#

PLACES TO PLAY

Redwood City Chess Club: Meets Mondays, First Baptist Church, James and Hudson. Informal games. John Vitlacil 367-9368.

Burlingame CC: Meets Thursdays, Lions Club, 990 Burlingame Ave. USCF tnmts, informal play. Wilfred Goodwin, 593-0054.

Palo Alto CC: Tuesday eves, days Sat. & Sun. 3800 Middlefield. USCF & blitz tnmts, informal play. Steve Farmer, 329-2487.

We welcome your games, positions and comments.