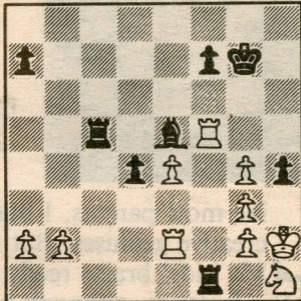




By Frisco Del Rosario  
**BISQUIER-FISCHER**  
 Black to play and win.



## IF NOT THE WARRIORS, DEFINITELY THE SACRAMENTO KINGS

The National Basketball Association holds its annual college draft today, merely 20 days after the Detroit Pistons won last season's championship. Maybe the home team Golden State Warriors, who are notorious for draft day blunders, will select 6'2" ex-world chess champion Bobby Fischer.

Fischer, 47, once said, "I would compare chess to basketball. Basketball players pass the ball around until they get an opening; like chess, like a mating attack." The only American ever to win the world chess championship, Fischer abdicated the title in 1975.

### Simultaneous Exhibition, Davis 1964

White: Bobby Fischer

Black: O. Celle

Evans Gambit

- |                           |  |
|---------------------------|--|
| 1. e4 e5                  | 15. Bb5 c6 <sup>o</sup>                |
| 2. Nf3 Nc6                | 16. Nc4! <sup>7</sup> Qe6 <sup>o</sup> |
| 3. Bc4 Bc5                | 17. Rad1 cb                            |
| 4. b4 <sup>1</sup> Bb4    | 18. Qc7 Bd7 <sup>o</sup>               |
| 5. c3 Be7                 | 19. Nd6 Ke7                            |
| 6. d4 d6 <sup>2</sup>     | 20. Nf5! <sup>10</sup> gf              |
| 7. de Ne5 <sup>3</sup>    | 21. ef Rac8                            |
| 8. Ne5 de5                | 22. Rd7! Qd7                           |
| 9. Qh5 g6                 | 23. f6! Nf6                            |
| 10. Qe5 Nf6               | 24. Re1 Ne4                            |
| 11. Ba3! Rf8 <sup>4</sup> | 25. Re4 Kf6                            |
| 12. O-O Ng4               | 26. Qd7 Rfd8                           |
| 13. Qg3 Ba3               | 27. Qg4 Resigns                        |
| 14. Na3 Qe7 <sup>5</sup>  |  |

#### NOTES:

- Fischer severely limited his openings repertoire for tournaments, but he often cut loose with the antique Evans Gambit in exhibition and offhand play.
- White reacts vigorously to this mistake. Fischer wrote in *60 Memorable Games* that 6...Na5 7. Ne5 Nc4 8. Nc4 d5 is required. English grandmaster Nunn furthers the analysis by giving 9. ed Qd5 10. Ne3 Qd7 11. O-O Nf6 12. c4 b5! as equal.
- 7...ed 8. Qb3 Na5 9. Bf7 Kf8 10. Qa4 is strong (Fischer).
- It would be easy to crumble under the pressure, but Black defends tenaciously from here. First he unpins his knight.
- Black intends ...Qe5, which forces the exchange of queens due to the threats of ...Qh2# and ...Qc5.
- 15...Bd7 16. Qc7 (not 16. Qg4 c6!) (Fischer).
- Exploiting the new weakness on d6.
- One of the many possibilities Fischer gives after 16...cb is 17. Nd6 Kd8 18. Rfd1 Bd7 19. Nb7 Kc8 20. Nd6 Kd8 21. Rd4! Ne5 22. Rad1 g5 23. Nf5 Qe8 24. Qe5! Qe5 25. Rd7 Ke8 (25...Kc8 26. Ne7!) 26. Re7! Qe7 27. Ng7#.
- Forced, if Black is to cope with the threats of Qd8# and Nd6.
- Opening more lines by force. Black must accept the sacrifice: 20...Ke8 21. Ng7 and 20...Kf6 21. Rd6 gf 22. Qd7! (Fischer).

### BURLINGAME CHESS CLUB NEWS

Experts Mark Racine, Tom Eichler and Warner Alter tied for 1st-3rd places with 4-1 scores in the Burlingame Chess Club Late Spring Swiss held consecutive Thursdays May 17-June 14. Racine won the first place trophy on tiebreaks.

A new five-round tournament begins 7:30 p.m. June 28 at 990 Burlingame Ave.

#### Burlingame 1990

White: Mike Ketchum

Black: Mark Racine

Stonewall Attack

- |             |             |
|-------------|-------------|
| 1. d4 Nf6   | 12. Ng4 fg  |
| 2. e3 g6    | 13. Nd2 ed  |
| 3. Bd3 Bg7  | 14. ed Nd4  |
| 4. f4 O-O   | 15. Rf8 Bf8 |
| 5. Nf3 d6   | 16. Qf1 Bf5 |
| 6. O-O Nc6  | 17. Bf5 Nf5 |
| 7. c3 e5    | 18. Ne4 Qd5 |
| 8. fe de    | 19. Nf6 Bc5 |
| 9. Nbd2 Ng4 | 20. Kh1 Qf7 |
| 10. Ne4 Kh8 | 21. Ng4 Ng3 |
| 11. Nf2 f5  | 22. Resigns |

**SOLUTION:** 1...Rh1! wins (2. Kh1 Rc1 3. Kh2 Bg3 4. Kh3 Rh1#).