

CHESS

BY ISAAC KASHDAN
INTERNATIONAL GRANDMASTER
Address letters to Chess Editor, L.A. Times
Los Angeles 53, Calif.

FIRST CHESS FIESTA FOR WESTCHESTER

The Westchester Chess Club, with the active co-operation of the Westchester Chamber of Commerce, has formulated its plans for the first annual chess fiesta, to take place Jan. 26 to 29 at Loyola University.

The main event will be an open tournament of six rounds, using Swiss system pairings. The first round will start at 8 p.m. Friday, Jan. 27. Three rounds will be played on Saturday, with the starting times 9 a.m., 2 p.m. and 7 p.m. The final two rounds are scheduled for Sunday, at 10 a.m. and 3 p.m.

The time limit will be 30 moves in the first hour, and 15 moves per half hour thereafter. Most games will be completed within three hours, allowing enough time to prepare for the next round.

Anyone can enter the tournament with a playing fee of \$10. In addition entrants must be members or must join both the U.S. Chess Federation (\$5 per year) and the California State Chess Federation (\$2.50).

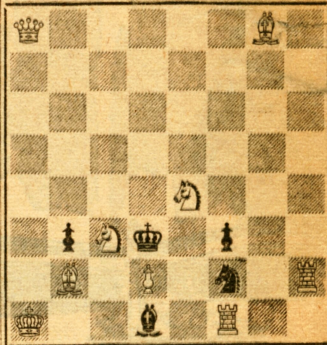
The tournament committee, headed by Fred S. Hazard of 9106 El Manor Ave., L.A. 45, announces that a minimum of \$300 will be added to the entrance fees for cash prizes. The first prize will be at least \$150 plus a special trophy. Seven additional prizes are offered, scaled down on a percentage basis.

After three rounds players with one point or less will be scheduled as a separate consolation group for the remainder of the tournament. An additional three cash prizes plus trophies will be awarded to winners in this group.

For those who feel they are not strong enough for the major event a separate tournament will be held. Only unrated players with no previous tournament experience may enter. The playing fee is \$2. A trophy to the winner and several merchandise prizes will be awarded.

Jan. 15, 1961

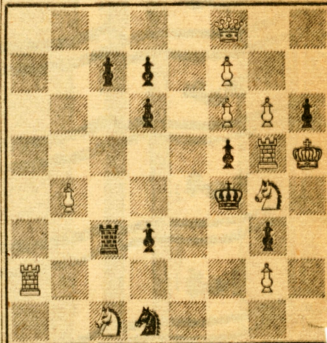
TIMES PROBLEM 3241
By E. N. Frankenstein
BLACK 5



WHITE 9

White mates in two.

TIMES PROBLEM 3242
By H. C. Mowry
BLACK 10



WHITE 11

White mates in three.

The keymove allows lots of added play in 3241. There is only one main variation in 3242, but it is well concealed.

SOLUTION TO PROBLEM 3235: P-Q5.
SOLUTION TO PROBLEM 3236: R-N2.
If BxR, 2 QxBch; if BxN, 2 N-R7ch;
if B else, 2 Q-R8ch; if N any, 2 Q-B4ch;
if P-B6, 2 R-N5.

SOLVERS' LIST

Five points—W. S. Aaron, F. Aks, T. T. Chang, M. Chutorian, C. Cresswell, J. Elnisky, C. Foster, J. Kaufman, C. L. Lund, N. J. Murphy, I. E. Nordstrom, W. L. Rankel, L. A. Victor.

Two points—B. Aabor, J. D. Barton, F. Ciamacco, D. O. Connell, D. Dutton, J. M. H. Hamilton, A. Hayman, Dr. J. A. Healy, O. H. Ketchum, J. R. Martinez, C. A. Nelson, J. A. Noruk, M. Rosen, G. F. Oglesby, S. Schwarz, L. Seeley, E. Wilson.
One point—T. L. Dimmick, J. Foley, M. L. Murphy, C. W. Wenborne.

In third place was Raymond Weinstein, former U.S. junior

eral merchandise prizes will be awarded.

Kashdan to Direct

Your editor will direct the tournaments. In addition he will open the fiesta at 7:30 p.m. Thursday with a simultaneous exhibition against 40 opponents. The charge for playing will be \$2 a board.

To register for one of the tournaments or the exhibition, send the fee to Tournament Treasurer Fred R. Hofeld, 6540 W 88th Pl., L.A. 45. For further information call A. Pannebakker at SP. 6-0887.

Loyola University has offered the use of several spacious rooms in the Students' Activities Building in which all the play will take place. The entrance is on W 80th St. west of Sepulveda Blvd. The closing dinner and prize awards will be held there at 8 p.m. Sunday.

A number of the leading aircraft corporations and other business organizations in Westchester are helping to sponsor the fiesta. Based on early returns the open tournament should be the strongest and best attended of any Southland chess event in some years.

RESHEVSKY EXHIBITIONS

Places are still open for anyone wishing to take a board against international grandmaster Samuel Reshevsky in the two simultaneous performances he will give in this area.

Wednesday at 7 p.m. Reshevsky will be at the Santa Monica Bay Chess Club, Lincoln Park Clubhouse, 7th and Wilshire in Santa Monica. The charge is \$3 for players.

Next Sunday at 1:30 p.m. the scene will be the University of Judaism, 6525 Sunset Blvd. The playing fee will be \$3 and spectators will be charged \$1.

FISCHER EASY WINNER IN FOURTH TITLE TOURNEY

Bobby Fischer, boy wizard of the chess world, was in top form in his fourth straight victory in the Lessing J. Rosenwald Tournament for the U.S. chess championship. He finished two full points ahead of the field, winning seven games and drawing four for a final score of 9-2.

In the last round Fischer, already sure of the title, defeated former champion Arthur Bisguier, dropping the latter from second place to a tie for fourth. The runner-up position was won by William Lombardy, former world junior champion, with a tally of 7-4.

In third place was Raymond Weinstein, former U.S. junior champion, who moved up with a fine victory in the final round against Samuel Reshevsky, for many years the leading American master.

For Reshevsky this was a most disappointing tournament. He won but two games, lost one and drew eight to finish in a tie for fourth, the lowest position of his long career in American championship events.

The three top prize winners Fischer, Lombardy and Weinstein, have been designated by the U.S. Chess Federation as participants in the interzonal tournament to be held later this year. This is one of the steps leading to a match with world champion Mikhail Tal of the Soviet Union.

A full score table of the tournament appears below. Following are games from the event:

KING'S INDIAN DEFENSE

Reshevsky White	Saidy Black	Reshevsky White	Saidy Black
1-P-QB4	P-KN3	22-P-B4	P-B3
2-N-KB3	B-N2	23-N-Q3	R-N3
3-P-Q4	P-Q3	24-P-N4	P-R3
4-N-B3	N-KB3	25-Q-Q	PxP
5-P-KN3	O-O	26-NxKBP	R-N7
6-B-N2	N-B3	27-R-B2	R-N3
7-O-O	B-N5	28-Q-B3	B-B
8-P-Q5	N-QR4	29-Q-Q3	Q-B2
9-N-Q2	P-B4	30-N-B3	N-N2
10-P-KR3	B-Q2	31-R-B2	N-Q
11-Q-B2	P-QR3	32-N-R4	P-N4
12-P-N3	P-QN4	33-N-R5ch	K-N
13-B-N2	R-N	34-N-B3	Q-N3
14-QR-N	Q-B2	35-Q-B3	N-B2
15-P-K4	PxP	36-N-Q2	N-K4
16-PxP	R-N2	37-Q-R5	N-Q2
17-KR-B	KR-N	38-P-K5!	QPxK
18-N-Q	N-K	39-B-K4	Q-B
19-BxB	KxB	40-B-B5	R-Q3
20-RxR	RxR	41-N-K4	Resigns
21-N-N2	P-K4		

RUY LOPEZ

Bisguier White	Kalme Black	Bisguier White	Kalme Black
1-P-K4	P-K4	18-PxP	BxQN
2-N-KB3	N-QB3	19-PxP	B-R3
3-B-N5	P-QR3	20-Q-B2	BxR
4-B-R4	N-B3	21-PxB	B-R3
5-O-O	B-K2	22-N-N5	P-N3
6-Q-K2	P-QN4	23-N-K4	P-B4
7-B-N3	O-O	24-N-Q6	Q-K8ch
8-P-QR4	B-N2	25-K-R2	Q-K3
9-P-Q3	P-Q3	26-Q-B6	Q-K7
10-PxP	PxP	27-Q-Q5ch	K-N2
11-RxR	QxR	28-B-K3	B-B
12-N-B3	N-QR4	29-NxB	RxN
13-NxNP	NxB	30-Q-Q7ch	K-B3
14-PxN	NxP	31-B-Q4ch	K-N4
15-NxBP	N-N6	32-Q-Q8ch	K-R3
16-RPxN	Q-R4	33-P-B3	Resigns
17-P-Q4	B-Q		

KING'S INDIAN DEFENSE

Lombardy White	Saidy Black	Lombardy White	Saidy Black
1-P-QB4	N-KB3	19-Q-B2	K-N
2-N-QB3	P-KN3	20-B-Q2	Q-N3
3-P-Q4	B-N2	21-P-N5	PxP
4-P-K4	P-Q3	22-PxP	N-R2
5-P-KR3	O-O	23-R-N3	Q-Q
6-B-N5	P-B4	24-K-N2	KNB
7-P-Q5	P-K3	25-R-R	B-Q5
8-N-B3	P-KR3	26-N-K4	Q-K2
9-B-K3	PxP	27-B-Q3	B-N2
10-KPxP	B-B4	28-R(3)-R3	N-K4
11-P-KN4	B-K5	29-B-B3	P-B4
12-B-K2	QN-Q2	30-PxPe.p.	BxP
13-R-KN	BxN	31-P-B4	N-N5
14-BxB	P-R3	32-R-N3	BxB
15-B-K2	Q-R4	33-QxB	Q-Q2
16-K-B	KR-K	34-Q-R8ch	K-B2
17-Q-Q2	K-R2	35-R-R7ch	NxR
18-P-KR4	Q-N5	36-QxNch	Resigns

UNITED STATES CHESS CHAMPIONSHIP

	1	2	3	4	5	6	7	8	9	10	11	12	W	L	
1—Bobby Fischer		1	1	1	1/2	1	1/2	1	1/2	1	1/2	1	1	9	2
2—William Lombardy	0		0	1/2	1/2	1/2	1	1/2	1	1	1	1	1	7	4
3—Raymond Weinstein	0	1		1	1	1/2	0	1/2	1/2	1	1/2	1/2	6	14	1/2
4—Arthur Bisguier	0	1/2	0		1/2	1/2	1	1	0	1	1	1/2	6	15	
5—Samuel Reshevsky	1/2	1/2	0	1/2		1/2	1/2	1/2	1	1/2	1	1/2	6	15	
6—James Sherwin	0	1/2	1/2	1/2	1/2		1/2	1	1	0	1/2	1	6	15	
7—Charles Kaline	1/2	0	1	0	1/2	1/2		1	1/2	0	1/2	1	5	16	
8—Paul Benko	1/2	1/2	1/2	0	1/2	0	0		1/2	1	0	1	4	16	1/2
9—Hans Berliner	0	0	1/2	1	0	0	1/2	1/2		0	1	1	4	16	1/2
10—Robert Byrne	1/2	0	0	0	1/2	1	1	0	1		0	1/2	4	16	1/2
11—Anthony Saidy	0	0	1/2	0	0	1/2	1/2	1	0	1		1	4	16	1/2
12—Herbert Seidman	0	0	1/2	1/2	1/2	0	1/2	0	0	1/2	0		2	18	1/2