

CHESS

BY ISAAC KASHDAN
INTERNATIONAL GRANDMASTER
Address letters to Chess Editor, L.A. Times
Los Angeles 53, Calif.

NORTH-SOUTH MATCH AT FRESNO, JUNE 2

Calls are going out to all able-minded chess players to register for the big event of the year, the annual North-South Team Match. The 24th in the series is scheduled at the Hotel Californian in Fresno, to start at 10 a.m. Sunday, June 2.

Based on the turnout in the recent practice match, Charles Henderson, captain of the South team, predicts that over 75 players will be headed for Fresno, intent on repeating last year's victory.

All classes of players are welcome. The only requirement is membership in the California State Chess Federation, which can be arranged at the match. All interested are urged to register in advance with Henderson at 1561 Linda Crest Drive, Beverly Hills.

Of the 23 matches played since 1926, the North has won 14 times, the South 6, with 3 ties. Of a total of 833 games contested, the North has scored 453 points to 380 for the South. Last year's victory for the South was the first in seven years.

Following are the scores of the matches. It will be noted that the number of players on a side has been increasing steadily.

Year	North	South	Year	North	South
1926	4½	7½	1946	14	11
1927	6½	5½	1947	17	5
1930	6½	5½	1948	28½	28½
1931	10½	14½	1949	24½	26½
1932	9½	10½	1950	24	21
1934	12½	12½	1951	38½	19½
1935	12½	12½	1952	32	27
1936	9½	15½	1953	34	27
1937	13	12	1954	42	30
1938	14½	10½	1955	35	24
1939	14	12	1956	31½	35½
1940	18½	6½			

FAIRFAX WINS CITY TITLE

The sixth annual All-City High School Chess Championship Tournament was held on Saturday, May 11, at Woodrow Wilson High School. Fairfax High School, with 21 out of a possible 24 team points, won the City Championship for the fourth time in the last six years.

The San Fernando High School team finished in second place with 17½ points. Tied for third were San Pedro High and Dorsey High, with 17 points each.

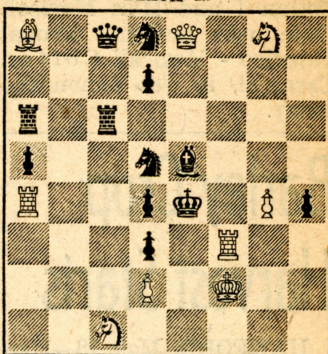
The tournament attracted 120 contestants, representing 15 high schools. They were divided into six groups of 20 each, with each group running a separate Swiss System tourney.

The winners in each section will play for the individual championship of the city schools. There were ties in three sections, which were not broken, so that nine of the boys are eligible to compete in the finals. They are:

- Dennis Busch, Fairfax High.
- Ken Cantrel, Polytechnic High.
- Ken Hense, Dorsey High.
- Dennis Ikenberry, Verdugo High.
- Benjamin Loveless, North Hollywood High.
- Bruce Margolin, Fairfax High.
- Mike Sampson, Fairfax High.
- Steven Sholomson, Fairfax High.
- Richard Villanueva, San Fernando High.

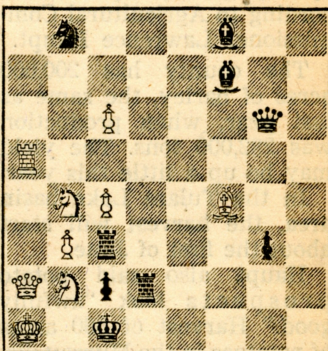
Tom Heimberg of UCLA directed the tournament, which ran very smoothly throughout. A number of faculty advisers put in much time and hard work to make the event a success. Among them were: Mr. Aguirre, Franklin High; Mr. Getze, Fairfax High; Mr. Kelsey of the host school, Wilson High; Mr. Levin, Verdugo Hills High; Mr. McMillan, San Fernando High; Mr. Melman, Wil-

May 19, 1957
TIMES PROBLEM 2859
S. Svennerstedt
BLACK 12



WHITE 9
White mates in two.

TIMES PROBLEM 2860
By V. L. Eaton
BLACK 9



WHITE 9
White mates in three.

For a change from the lightweight problems we have been featuring, today's offerings have lots of lumber. In 2859 the pins and unpins on three lines have to be watched carefully.

Vincent Eaton is noted for complex themes in his three-movers. In 2860 it is clear that the Queen must get into play. She does in three clever variations after the good key.

SOLUTION TO PROBLEM 2855: R-N3.
SOLUTION TO PROBLEM 2856: P-R8(B).
If K-B8, 2 BxP; if P-K6, 2 B-N2.

SOLVERS' LIST

Five points—F. Baird-Smith Jr., H. D. Duckwald, G. Francis, W. H. Griffith, G. Heathman, W. W. Irwin, S. H. Katz, W. S. Moore, M. Morris, L. A. Victor. Four points—L. Simon. Three points—J. C. Beaver, L. Harvey, J. Langton Jr. Two points—K. G. Howell, O. H. Ketchum, A. Madrial, E. E. Penter, D. S. Robbins, M. Rosen, J. P. Walsh. One point—C. R. Earl, Dr. J. A. Healy, N. Lesser, T. Sherdeman, L. L. Wilkinson.

The Santa Monica 2 team finished with a 6-2 match total, losing to the Valley Chess Club as well as to their clubmates. They compiled the best point score, 34½ - 13½. Valley took third place, with 5½-2½ in matches and 31½-16½ in points.

Other final match scores were: West Valley, 5-3; Steiner 1, 4½-3½; Inglewood, 4-4; Beverly Hills, 2-6; Steiner 2, 2-6, and Local 22, 0-8. The Steiner teams had been highly favored, but some of the better players were unable to take part in the key matches.

Following are the details of the last round:

ROUND 8—Inglewood, 2: Santa Monica 2, 4. West Valley, 6: Santa Monica 1, 0. Steiner 1, 4: Beverly Hills, 2. Valley, 3½; Steiner 2, 2½. Local 22, bye.

GLIGORIC WINS TITLE

Svetozar Gligoric again won the championship of Yugoslavia from a strong field of masters and grandmasters. His score was 15½-6½. Tied for second were young Ivkov, Karaklaic and Dr. Trifunovic.

The following games are from the tournament.

...nando High; Mr. Melman, Wilson High, and Mr. Palmer, Huntington Park High.

15TH MATCH GAME

This was one of the most exciting games of the match. The long series of combinations initiated by Smyslov's 33... Nxp wound up with Botwinnik gaining two Pawns and a secure position.

Then came the surprise. Soon after the adjournment Botwinnik exchanged Queens at an inopportune moment, apparently not noting that one of his Pawns would fall and that the ending could only be drawn.

NIMZO-INDIAN DEFENSE

Botwinnik White	Smyslov Black	Botwinnik White	Smyslov Black
1-P-QB4	N-KB3	30-QxP	P-R5
2-N-QB3	P-K3	31-R-R3	R-B4
3-P-Q4	B-N5	32-R-K	R-B4
4-P-K3	P-QN3	33-N-Q6	NxP
5-N-K2	B-R3	34-BxN	P-R6
6-P-QR3	BxNch	35-BxP	BxPch
7-NxB	P-Q4	36-RxB	RxR
8-P-QN3	O-O	37-NxP	RxN
9-B-K2	PxP	38-BxP	RxP
10-PxP	N-B3	39-QxP	R-B5
11-P-QR4	Q-Q2	40-BxRch	RxB
12-N-N5	KR-Q	41-Q-K6	Q-B5
13-B-N2	N-QR4	42-Q-QB6	R-B4
14-Q-B2	P-B3	43-Q-R8ch	K-R2
15-N-R3	Q-K2	44-Q-K4	QxQ
16-O-O	P-B4	45-RxQ	R-QR4
17-N-N5	B-N2	46-K-N2	K-N3
18-B-R3	N-B3	47-K-B3	K-B4
19-KR-Q	P-QR3	48-R-B4ch	K-K4
20-N-B3	N-QN5	49-R-K4ch	K-B4
21-Q-N3	P-QR4	50-R-B4ch	K-K4
22-N-N5	P-R3	51-K-N4	RxP
23-B-N2	QR-B	52-K-N5	R-R3
24-P-B3	PxP	53-P-R4	R-QB3
25-PxP	N-R4	54-P-R5	K-K3
26-B-KB	Q-N4	55-K-N6	K-K4ch
27-B-R3	N-B5	56-K-N5	K-K3
28-K-R	P-R4		Drawn
29-BxN	PxB		

18TH MATCH GAME

Botwinnik sacrificed a Pawn in one of his favorite variations of the French Defense. After most of the pieces were exchanged, he regained the Pawn with some advantage in position. But with opposite colored Bishops, he could find no way to force the win.

FRENCH DEFENSE

Smyslov White	Botwinnik Black	Smyslov White	Botwinnik Black
1-P-K4	P-K3	32-P-B4	RxP
2-P-Q4	P-Q4	33-K-Q3	R-KN7
3-N-QB3	B-N5	34-PxP	P-B4
4-P-QR3	BxNch	35-R-N4	B-K5ch
5-PxB	NxP	36-K-Q4	R-N5
6-Q-N4	N-KB3	37-B-K	P-R4
7-QxNP	R-N	38-R-N2	B-Q4ch
8-Q-R6	P-B4	39-K-Q3	R-R5
9-N-K2	R-N3	40-K-K2	fxQRP
10-Q-K3	N-B3	41-R-Q2	B-B5ch
11-B-Q2	N-K2	42-K-B2	K-Q2
12-N-N3	B-Q2	43-R-Q4	B-N4
13-PxP	Q-B2	44-B-Q2	P-R5
14-P-QB4	B-B3	45-B-N5	R-Q6
15-B-K2	N-N5	46-RxR	BxR
16-BxN	RxB	47-B-B	B-N4
17-P-R3	R-N3	48-K-K3	K-K3
18-NxP	N-B4	49-K-B4	B-Q2
19-N-Q6ch	QxN	50-B-N2	K-Q4
20-PxQ	NxQ	51-B-R3	B-B
21-BxN	BxP	52-B-B	B-K3
22-R-KN	K-Q2	53-B-R3	B-Q2
23-P-KR4	P-KR4	54-B-B	K-Q5
24-P-B5	QR-KN	55-B-R3	B-K3
25-R-N	B-B6	56-B-N4	B-Q2
26-RxR	RxR	57-B-R3	B-B
27-K-Q2	P-K4	58-B-N4	B-Q2
28-K-Q3	P-B3	59-B-R3	B-B
29-B-Q2	R-N7	60-B-B	K-Q4
30-K-K3	B-B3	61-B-R3	B-Q2
31-B-B3	K-K3	62-B-B	Drawn

SANTA MONICA TEAMS

ENTER CLASS B FINALS

Teams representing the Santa Monica Chess Club took the first two places in the West section of the Class B team tournament of the Southern California Chess League. They will play in a final round robin against Pasadena and Long Beach, winners of the East section.

The Santa Monica 1 team, which had won seven straight matches to insure their victory, forfeited in the last round to the West Valley Chess Club. They scored 32 points of the 48 games scheduled.

NIMZO-INDIAN DEFENSE

Gligoric White	Karaklalic Black	Gligoric White	Karaklalic Black
1-P-Q4	N-KB3	26-B-KR4	Q-Q4
2-P-QB4	P-K3	27-QxQ	PxQch
3-N-QB3	B-N5	28-K-Q3	R-K5
4-P-K3	O-O	29-B-Q8	N-B
5-B-Q3	P-B4	30-BxP	R-K3
6-N-B3	P-Q4	31-B-B5	R-KN3
7-O-O	PxBP	32-P-KN3	N-K3
8-BxBP	QN-Q2	33-B-Q7	P-R4
9-B-Q3	P-QN3	34-P-QN4	R-B3
10-Q-K2	B-N2	35-R-R2	K-R2
11-R-Q	PxP	36-R-R8	B-B2
12-PxP	R-B	37-R-QB8	P-R5
13-B-Q2	B-Q3	38-BxN	PxB
14-N-QN5	B-N	39-RxB	P-R6
15-B-N5	P-QR3	40-B-Q6	P-R7
16-N-B3	Q-B2	41-R-B	RxP
17-BxQRP	BxN	42-R-KR	K-N3
18-QxB	QxPch	43-P-N4	R-B6ch
19-K-B	QR-Q	44-K-B2	R-B7ch
20-N-K4	NxN	45-K-N3	R-KN7
21-BxR	N-Q7ch	46-RxP	RxP
22-RxN	Q-R8ch	47-B-K5	R-N8
23-K-K2	QxR	48-P-N5	R-QB8
24-B-K7	R-K	49-P-N6	Resigns
25-B-QN5!	QxRP		

FRENCH DEFENSE

Vasilevic White	Sotirovski Black	Vasilevic White	Sotirovski Black
1-P-K4	P-K3	11-PxN	BPxP
2-P-Q4	P-Q4	12-NxP	RxRch
3-N-Q2	P-KB4	13-QxR	BxQpch
4-PxBP	PxP	14-PxB	PxN
5-B-Q3	N-KB3	15-B-B4ch	K-R
6-KN-B3	B-Q3	16-B-KN5!	Q-K
7-O-O	O-O	17-R-K	N-Q2
8-P-B3	P-B3	18-B-B7	Q-B
9-N-K5	N-K5	19-RxP	Resigns
10-P-B3	BxN		

ENGLISH OPENING

Bidev White	Pirc Black	Bidev White	Pirc Black
1-P-QB4	P-K4	9-BxN	P-QN4!
2-P-KN3	N-KB3	10-BxPch	K-K2
3-B-N2	P-B3	11-Q-Q5	N-B7ch
4-N-QB3	P-Q4	12-K-Q	NxR
5-PxP	PxP	13-P-N3	Q-B2
6-Q-N3	N-B3!	14-B-R3ch	K-B3
7-NxP	N-Q5	15-Q-B3ch	B-B4
8-Q-B4	NxN	Resigns	

GRUNFELD DEFENSE

Ivkov White	Cuderman Black	Ivkov White	Cuderman Black
1-P-QB4	N-KB3	22-N-Q5	NxN
2-N-QB3	P-Q4	23-PxN	P-QB4
3-PxP	NxP	24-Q-B3ch	K-R2
4-P-KN3	P-KN3	25-R-Q4	P-B3
5-B-N2	P-QB3	26-R-K	K-N2
6-N-B3	B-N2	27-R(Q)-K4	QR-K
7-O-O	O-O	28-Q-K3	R-B2
8-P-Q4	N-R3	29-R-KR4	P-KN4
9-B-N5	P-R3	30-R-R5	R-KR
10-B-Q2	B-K3	31-RxR	KxR
11-Q-B	K-R2	32-B-R3	P-N3
12-P-K4	N-N3	33-B-K6	R-N2
13-N-K2	B-B5	34-Q-KB3	Q-Q
14-R-K	N-B2	35-B-B5	P-N5
15-B-K3	N-K3	36-BxP	B-N2
16-N-B3	NxP	37-B-K6	R-N4
17-NxN	BxN	38-P-KR4	R-N2
18-BxP	B-N2	39-Q-R5ch	R-R2
19-BxB	KxB	40-Q-N6	Q-R
20-R-Q	Q-B2	41-B-B5	Resigns
21-P-N3	B-R3		

MAR DEL PLATA, 1957

SICILIAN DEFENSE

Keres White	Albert Black	Keres White	Albert Black
1-P-K4	P-QB4	18-RxQ	N-Q2
2-N-KB3	N-QB3	19-N-Q5	B-Q
3-P-Q4	PxP	20-P-N3	N-QB3
4-NxP	N-B3	21-P-B6	KPxP
5-N-QB3	P-Q3	22-RxP	KN-K4
6-B-QB4	P-K3	23-B-K4	R-N
7-O-O	P-QR3	24-R-Q	P-N3
8-B-K3	Q-B2	25-P-KR4	R-R4
9-B-Q3	B-K2	26-K-B2	P-QR4
10-P-B4	B-Q2	27-R-KR	R-N2
11-Q-B3	O-O	28-B-N2	K-B
12-QR-K	P-QN3	29-P-R5	R-Q2
13-P-QR3	N-QR4	30-R(4)-KR4	K-N
14-P-KN4	P-K4	31-N-B4	B-B2
15-N-B5	BxN	32-PxP	BPxP
16-KPxP	Q-B3	33-B-Q5ch	K-R
17-P-N5	QxQ	34-P-B7	Resigns

QUEEN'S GAMBIT DECLINED

Fanno White	Casas Black	Fanno White	Casas Black
1-P-QB4	N-KB3	22-B-B7	N-K4
2-N-QB3	P-K3	23-QR-B	KR-B
3-N-B3	P-Q4	24-BxN	QxB
4-P-Q4	B-N5	25-Q-R6	R-K
5-P-K3	O-O	26-R-B2	P-R4
6-B-K2	P-B4	27-Q-Q3	N-Q3
7-O-O	P-QN3	28-N-B6	Q-K3
8-QPxP	NPxP	29-R-Q	N-B5
9-N-QR4	Q-K2	30-QxP	NxP(R6)
10-PxP	PxP	31-R-B3	QxQ
11-P-QR3	B-R4	32-RxQ	N-N8
12-NxP	QxN	33-R-B	N-R6
13-P-QN4	Q-K2	34-RxP	P-R3
14-PxB	B-R3	35-KR-QB5	N-N4
15-B-Q2	R-Q	36-P-R4	R-K5
16-B-N4	Q-K5	37-R(1)-B4	RxR
17-R-B	BxB	38-RxR	K-B
18-QxB	QN-Q2	39-N-N4	R-R2
19-B-Q6	Q-K3	40-R-B6	N-B2
20-R-B6	N-K5	41-P-N4	K-K2
21-N-Q4	Q-K	42-RxNch	Resigns