

# CHESS

BY ISAAC KASHDAN

INTERNATIONAL GRANDMASTER  
Address letters to Chess Editor, L.A. Times  
Times Mirror Square, Los Angeles,  
Calif. 90053

## LARSEN, SPASSKY IN BATTLE FOR CUP

With the Piatigorsky Cup competition more than half way over, it is shaping up as a battle royal between Bent Larsen of Denmark and recent challenger for the world chess championship, Boris Spassky of Leningrad.

Based on the standings after the 11th round, and the probable outcome of an adjourned game as this is written, Larsen and Spassky were tied with scores of 7-4.

Spassky had turned in the steadiest performance, three wins and eight draws. He was the only undefeated player, nor had he been in serious danger at any time.

Larsen, playing more daring, and necessarily more risky chess, had the highest number of wins with five, two losses and four draws, less than anyone else in that respect.

Of the 10 grandmasters, seven were bunched at or near the 50% mark. At least in part this was due to the high percentage of drawn games, 36 out of 55 played.

Three of the competitors, Jan Donner of Holland, Samuel Reshevsky of Spring Valley, N.Y. and Wolfgang Unzicker of West Germany had identical results of one win, one loss and nine draws. Each totalled 5½-5½.

The most inconsistent performer was brilliant 23-year-old U.S. chess champion Bobby Fischer of Brooklyn. After an indifferent start he lost three straight games to drop to ninth place in the standings.

Fischer then seemed to find himself. He outplayed world champion Tigran Petrosian of the USSR to win a pawn, though the game resulted in a draw. Playing fine chess, Fischer then scored twice in succession against Reshevsky and Portisch.

As a result Fischer moved up to the group tied at 5½-5½, which also includes Miguel Najdorf of Argentina. Another winning spurt, and any of these players may be in the running for the big money.

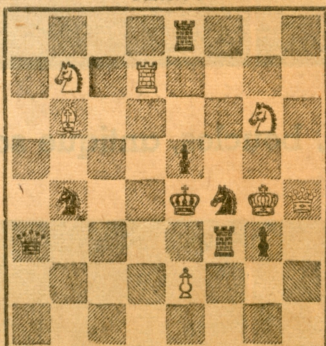
Petrosian's performance is one of the deeper mysteries of the event to date. Coming here after a successful defense of his title, he was one of the prime favorites. However, his tournament results have never been spectacular. He is perhaps too easy-

Aug. 7, 1966

TIMES PROBLEM 3821

By T. Andersson

BLACK 8



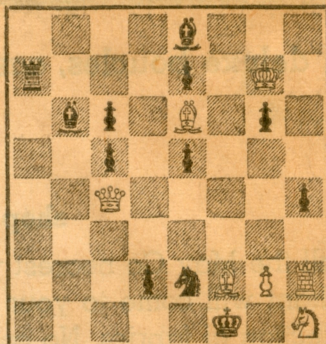
WHITE 7

White mates in two.

TIMES PROBLEM 3822

By W. A. Whyatt

BLACK 12



WHITE 7

White mates in three.

Interferences and selfblock by the knight are the main action in the two-mover. The interferences in the three-mover are considerably more subtle, with the activity of the white pawn particularly interesting.

SOLUTION TO PROBLEM 3815: B-K8  
SOLUTION TO PROBLEM 3816: B-Q3  
If B-B2 or B-B3, 2 R-K5; if B-K2, 2 R-QB5; if B-N4, 2 RxB; if B-N3 or B-N5, 2 R-KB5; if B-B6, 2 R-Q5; if PxP, 2 RxB; if P-B3, 2 RxB; if P-B4, 2 P-B4.

### SOLVERS' LIST

Five points — D. A. Daggett, B. E. Farley, P. B. Geltner, L. J. Hoffman, F. J. Munson, I. E. Nordstrom, M. Porter, V. E. Rosado, R. Roslin, D. Rothman, H. W. Scovel.

Three points—H. Arras, A. Gutierrez, R. E. Ham, D. A. Page, N. Wilpert.

Two points—Dr. J. A. Healy, O. H. Ketchum, S. Rudin.

One point—D. L. Connors, T. Howell, M. Martin, M. Steinberg.

taneous exhibitions in clubs in the area before departing for home.

Bent Larsen will take on all comers at \$3 a board at the City Terrace Chess Club, 1126 N. Hazard St. starting at 8 p.m. Wednesday, aug. 17.

Ljos Portisch will appear in a similar exhibition at Santa Barbara, with the time and place to be announced. For further information contact Jack Tanner, 1505 Grand Ave., Santa Barbara.

U.S. OPEN AT SEATTLE



going by nature, but inclined to fight for every point.

At any rate Petrosian was just below the 50% mark, tied at 5-6 with Lajos Portisch of Hungary. Here too a couple of wins could move either player way up in the standings.

Bringing up the rear was Borislav Ivkov of Yugoslavia. He had only one victory, in the very first round against Larsen, five losses and five draws for a total of 3½-7½.

The 13th round will be played at 1:30 p.m. today. Paired together will be Larsen vs. Spassky, Unzicker vs. Najdorf, Donner vs. Fischer, Ivkov vs. Petrosian and Portisch vs. Reshevsky.

Five rounds remain to be contested through Monday, Aug. 15. The final banquet for the players, at which the prizes will be distributed, will be held on Tuesday, Aug. 16.

The banquet is open to the public, at \$5.75 per person. Reservations may be made at the tournament, or by writing to Piatigorsky Foundation at the Miramar Hotel, Santa Monica.

Following are results and games from the tournament. For later standings see the news section of The Times.

ROUND 5—Ivkov ½, Reshevsky ½.

ROUND 7—Ivkov 0, Spassky 1; Donner ½, Portisch ½; Unzicker ½, Reshevsky ½; Larsen 1, Petrosian 0; Najdorf 1, Fischer 0.

ROUND 8—Spassky 1, Fischer 0; Petrosian 1, Najdorf 0; Reshevsky ½, Larsen ½; Portisch ½, Unzicker ½; Ivkov ½, Donner ½.

ROUND 9—Donner ½, Spassky ½; Unzicker 1, Ivkov 0; Larsen 1, Portisch 0; Najdorf ½, Reshevsky ½; Fischer ½, Petrosian ½.

ROUND 10—Spassky ½, Petrosian ½; Fischer 1, Reshevsky 0; Najdorf ½, Portisch ½; Unzicker ½, Donner ½; Larsen vs. Ivkov, adjourned.

ROUND 11 — Unzicker ½, Spassky ½; Donner 1, Larsen 0; Ivkov ½, Najdorf ½; Portisch 0, Fischer 1; Reshevsky ½, Petrosian ½.

## MASTERS TO EXHIBIT

Several of the participants in the Piatigorsky Cup Tournament will be giving simul-

The big event of the United States Chess Federation, the U.S. Open Chess Championship, will start at 7 p.m. next Sunday in the Nisqually Room on the site of the 1962 World's Fair in Seattle.

Over \$4,000 in prizes are offered for the event, which will be a 13-round Swiss system through Aug. 26. Top prizes are \$1,000, \$600 and \$300. Many awards are offered for best results in various rating classes.

Registration is from 8 a.m. to 3 p.m. Sunday at the Roosevelt Hotel in Seattle, or in advance by writing to U.S. Open Chess Tournament, P.O. Box 505, Bothell, Wash.

## GRUENFELD DEFENSE

Spassky White	Fischer Black	Spassky White	Fischer Black
1-P-Q4	N-KB3	26-Q-B2	K-R
2-P-QB4	P-KN3	27-PxP	PxP
3-N-QB3	P-Q4	28-Q-Q2	K-N2
4-PxP	NxP	29-R-KB	Q-K2
5-P-K4	NxN	30-Q-Q4ch	R-B3
6-PxN	B-N2	31-NK4	BxN
7-B-QB4	P-QB4	32-BxB	Q-B4
8-N-K2	N-B3	33-QxQ	RxRch
9-B-K3	O-O	34-KxR	PxQ
10-O-O	Q-B2	35-P-KR4	N-B5
11-R-B	R-Q	36-K-K2	N-K4
12-Q-K	P-K3	37-K-K3	K-B3
13-P-B4	N-R4	38-K-B4	N-B2
14-B-Q3	P-B4	39-K-K3	P-N4
15-R-Q	P-N3	40-P-R5	N-R3
16-Q-B2	PxQP	41-K-Q3	K-K4
17-BxP	BxB	42-B-R3	K-Q3
18-PxB	B-N2	43-K-B4	P-N5
19-N-N3	Q-B2	44-P-R4	N-N
20-P-Q5	BPxP	45-P-R5	N-R3
21-PxP	QxKP	46-B-K4	P-N6
22-P-B5	Q-B2	47-K-N5	N-N
23-BxP	RxR	48-B-N	N-R3
24-RxR	R-KB	49-K-R6	K-B3
25-B-N	Q-B3	50-B-R2	Resigns

## VIENNA GAME

Larsen White	Portisch Black	Larsen White	Portisch Black
1-P-K4	P-K4	28-KRxN	RxP
2-B-B4	B-B4	29-R-Q6ch	K-K2
3-N-QB3	N-QB3	30-RxR	KxR(3)
4-Q-N4	P-KN3	31-K-B2	R-R8
5-Q-B3	N-B3	32-RxP	R-QN8
6-KN-K2	P-Q3	33-R-Q2	K-K4
7-P-Q3	B-KN5	34-K-B3	P-R3
8-Q-N3	P-KR3	35-P-QN4	K-B4
9-P-B4	Q-K2	36-K-K3	K-N5
10-N-Q5	NxN	37-K-Q4	K-N6
11-QxB	N-B3	38-K-B5	P-N4
12-Q-R3	N-QR4	39-K-N6	R-QR8
13-B-N5ch	P-B3	40-P-N3	R-QB8
14-B-R4	P-QN4	41-KxP	RxP
15-B-N3	P-Q4	42-R-N2	P-N5
16-BPxP	QxP	43-KxP	K-R7
17-P-B3	NxB	44-K-R5	R-B
18-PxN	B-N3	45-P-N5	R-Rch
19-R-B	B-Q	46-K-N4	R-QN
20-B-B4	Q-K3	47-K-B5	R-Bch
21-QxQch	PxQ	48-K-Q6	R-QN
22-N-Q4	PxP	49-K-B6	R-Bch
23-NxBP	R-R2	50-K-N7	R-B
24-NxB	RxN	51-P-N6	P-N6
25-R-R6	PxP	52-K-R6	R-B7
26-BxP	RxB	53-R-N	Resigns
27-RxPch	K-Q2		