

CHESS

BY ISAAC KASHDAN
INTERNATIONAL GRANDMASTER
Address letters to Chess Editor, L.A. Times
Los Angeles 53, Calif.

FISCHER WINS AGAIN TO RETAIN U.S. TITLE

Bobby Fischer, who at 17 is the youngest international grandmaster in history, has clinched the United States chess championship for the fourth year in succession, according to a report from the New York Times.

With one round to go, Fischer's score of 8-2 can no longer be equaled by any of his rivals in the tournament at the Hotel Empire in New York. He won eight games and drew against Charles Kalme, Samuel Reshevsky, Robert Byrne and Paul Benko.

The draw with Benko, which was agreed after 15 moves of the 10th round, was all Fischer needed. The one good break for the champion occurred in the previous round against Saidy.

In this game Saidy with the white pieces outplayed Fischer. Toward the end of the first session Saidy had the advantage of a passed pawn. He weakened in time pressure, however, to allow Fischer counterplay just before adjournment. Playing masterfully in the ending, Fischer finally triumphed in 59 moves.

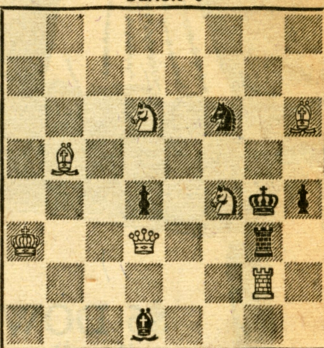
In second place is Arthur Bisguier with a score of 6-4. Whether he can remain in that position is questionable, as he is scheduled to face Fischer in the final round. After a strong start, Bisguier lost two games in succession, to Hans Berliner and Raymond Weinstein.

Reshevsky and Weinstein are tied at 5½-3½. They are paired in the last round, which should make for an interesting battle. Each has an unfinished game, Reshevsky with Byrne and Weinstein with Kalme.

Reshevsky, boy wonder of the 1920s, who held the U.S. title for a number of years, is the only player besides Fischer to remain undefeated. But he won only twice while drawing seven games.

Jan. 8, 1961

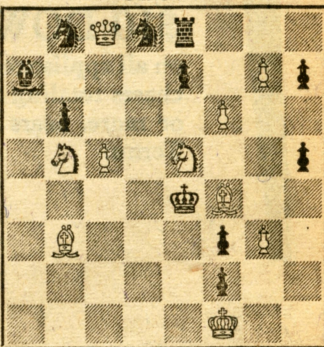
TIMES PROBLEM 3239
By C. J. Allison
BLACK 6



WHITE 7

White mates in two.

TIMES PROBLEM 3240
By P. F. Blake
BLACK 11



WHITE 10

White mates in three.

SOLUTION TO PROBLEM 3233: Q-K5
SOLUTION TO PROBLEM 3234: N-Q1
Threat, 2 N-K3ch; if K-K5, 2 R-B4ch;
if B-K5, 2 P-K3; if P-N4, 2 Q-K3.

Pinned or no, the queen is plenty active in 3239. The three-mover has some fine quiet second moves and a surprising sacrifice.

SOLVERS' LIST

Five points—W. S. Aaron, F. Aks, T. T. Chang, M. Chutorian, J. Kaufman, C. L. Lund, I. E. Nordstrom, W. L. Rankel, D. Rothman, L. A. Victor. Four points—M. L. Murphy.

Two points—B. Aabor, J. D. Barton, D. O. Connell, C. Cresswell, J. Elnisky, C. Foster, A. Hayman, Dr. J. A. Healy, O. H. Ketchum, F. W. McElwain, N. J. Murphy, G. F. Oglesby, M. Rosen, E. Wilson. One point—N. J. McGarry, J. Snyder.

Following are the scores after 10 rounds, with several games adjourned, and a selection of games from the tournament:

STANDINGS OF PLAYERS

	W	L		W	L
Fischer	8	2	Berliner	4 1/2	4 1/2
Bisguier	6	4	Kalme	3 1/2	4 1/2
Reshevsky	5 1/2	3 1/2	Benko	3 1/2	6 1/2
Weinstein	5 1/2	3 1/2	Byrne	3	5
Lombardy	5	4	Seidman	2 1/2	6 1/2
Sherwin	5	4	Saidy	2	6

RUY LOPEZ

	Seidman	Fischer	Seidman
Fischer	Black	White	Black
White	P-K4	19-R-KB	R-K7
1-P-K4	N-QB3	20-B-Q	RxN
2-N-KB3	P-QR3	21-B(1)xB	P-B3
3-B-N5	N-B3	22-R-K	BxB
4-B-R4	B-K2	23-QxB	RxQNP
5-O-O	P-QN4	24-R-K8ch	QxR
6-R-K	O-O	25-BxQ	RxB
7-B-N3	P-Q4	26-P-KR3	P-N5
8-P-B3	P-K5	27-PxP	RxQNP
9-PxP	PxN	28-QxPch	K-N
10-PxN	B-KN5	29-Q-N5ch	K-R
11-QxP	B-Q3	30-Q-B4	R-R5
12-Q-N3	P-N4	31-Q-B7	R-KN
13-P-KB4	K-R	32-QxBP	RxRP
14-P-Q4	PxP	33-Q-K5ch	R-N2
15-R-K5	N-R4	34-P-N4	P-R3
16-QxBP	BxR	35-Q-N8ch	R-N
17-RxN	R-K	36-P-B7	Resigns
18-N-Q2			

KING'S INDIAN DEFENSE

	Berliner	Reshevsky	Berliner
Reshevsky	Black	White	Black
White	N-KB3	14-PxP e.p.	NPxP
1-P-Q4	P-KN3	15-NxP(4)	Q-N3
2-P-QB4	B-N2	16-N-N3	N-K4
3-N-QB3	P-Q3	17-B-K3	Q-N5
4-P-K4	O-O	18-B-Q2	Q-R5
5-B-K2	P-K4	19-B-QB3	PxP
6-N-B3	N-B3	20-QxP	NxP
7-O-O	N-KN5	21-Q-B5	B-K3
8-B-K3	P-B3	22-BxB	KxB
9-B-N5	P-B4	23-Q-Q4ch	K-B2
10-B-B	N-Q5	24-N-B5	Q-B7
11-P-Q5	PxN	25-NxB	QxB
12-NxN	P-B4	26-N-B4	Resigns
13-N-N5			

KING'S INDIAN DEFENSE

	Byrne	Bisguier	Byrne
Bisguier	Black	White	Black
White	N-KB3	22-P-QR4	P-N3
1-P-Q4	P-KN3	23-NxQP	BxN
2-P-QB4	B-N2	24-P-K5	N-N2
3-N-QB3	P-Q3	25-PxB	P-B3
4-P-K4	P-KR3	26-NxP	PxN
5-B-N5	O-O	27-QxP	Q-K
6-B-R4	N-B3	28-QxRP	Q-R4
7-P-B3	N-K4	29-B-R7ch	K-R
8-P-Q5	N-Q2	30-QxQ	NxQ
9-P-B4	QN-Q2	31-B-Q3	N-N
10-B-Q3	P-B3	32-P-N4	N-N2
11-KN-K1	Q-N3	33-QR-K	K-N
12-R-QN	N-B4	34-RxP	RxR
13-B-KB2	PxP	35-BxR	BxRP
14-BPxP	Q-Q	36-R-K7	N-K
15-B-B2	PxP	37-B-Q4	NxP
16-P-KR3	N-R3	38-P-R4	N-Q2
17-P-QN4	N-R4	39-P-R5	R-K
18-B-Q4	B-K4	40-R-N7ch	K-B
19-O-O	P-KN4	41-P-R6	Resigns
20-Q-Q2	B-Q2		
21-N-N5			

QUEEN'S GAMBIT DECLINED

	Berliner	Bisguier	Berliner	Bisguier
Berliner	Black	White	Black	White
White	N-KB3	15-RxP	O-O-O	Q-R3
1-P-Q4	P-K3	16-Q-N	N-K2	B-B3
2-P-QB4	B-N5	17-R-N5	Q-N3	Q-N3
3-N-QB3	P-Q4	18-R-B5ch	R-Q2	R-N2
4-B-N5	PxP	19-Q-N2	Q-B2	K-N
5-PxP	P-B4	20-Q-R3	K-N	NxN
6-P-K3	P-B5	21-K-K2	RxR	NxR
7-B-Q3	Q-R4	22-R-QN	Resigns	
8-B-B2	BxNch	23-Q-R6		
9-BxN	QxPch	24-NxP		
10-PxB	PxB	25-RxB		
11-K-B	Q-R4	26-RxQ		
12-N-K2	N-B3	27-QxKBP		
13-N-B4	B-Q2			
14-R-QN				

KING'S INDIAN DEFENSE

	Byrne	Weinstein	Byrne	Weinstein
Byrne	Black	White	Black	White
White	N-KB3	18-N-Q4	N-N5	BxN
1-P-Q4	P-KN3	19-N-N5	N-B3	N-K5
2-P-QB4	B-N2	20-PxB	R-K2	KR-K
3-N-QB3	P-Q3	21-QR-K	PxB	R-B2
4-P-K4	P-K4	22-Q-Q3	K-R	Q-B4
5-B-Q3	N-R4	23-Q-B4	Q-K4	P-K6
6-P-Q5	O-O	24-BxN	BxB	RxR
7-KN-K2	P-KB4	25-R-K3	R(1)-K	P-K7
8-O-O	PxP	26-P-KR3	B-N2	
9-PxP	N-Q2	27-K-R2		
10-P-B4	PxP	28-R-N3		
11-R-N	NxN	29-B-R6		
12-NxP	N-K4	30-RxQ		
13-BxN	Q-K	31-Q-Q4ch		
14-N-K2	B-Q2	32-R-N4		
15-Q-Q2	Q-N3	33-R-K4		
16-P-QN3	QR-K	Resigns		
17-B-B2				

COMING EXHIBITIONS

Grandmaster Samuel Reshevsky, starting on an exhibition tour of the country, is due for two appearances here. He will play at the Santa Monica Bay Chess Club, Lincoln Park in Santa Monica, on Jan. 18. To reserve a board write to Her-

bert T. Abel, 126 Bicknell Ave., Santa Monica, or call EX. 9-1324.

On Jan. 22 Reshevsky will take on 60 opponents at the University of Judaism, 6525 Sunset Blvd. For reservations write to Mrs. Lina Grumette at the Herman Steiner Club, 626 S La Brea Ave., or call OL. 6-3670.

In a more unusual event Larry Evans will play simultaneously, giving the odds of a knight to all comers, next Sunday at Coffee House Positano, 19453 Pacific Coast Highway, Malibu.

CHESS CLUB NOTES

The annual tournaments for masters, experts and Class A players will start Friday evening at the Herman Steiner Chess Club. To enroll or for further information write to Gene L. Rubin, 250 S La Cienega Blvd., or call him at OL. 5-6072 (days) or WE. 5-5329 (evenings).

Case Lukaart, scoring 7-1, took first place in the Van Nuys Open Tournament, sponsored by the Van Nuys Chess Club, which meets Mondays at 13162 Burbank Blvd. Tied at 6-2 were M. Leidner, R. Myhro, L. Mercy, J. Barry, H. Levin and Joseph. The tournament, in which 48 players participated, was directed by Ernest Schroer and Walter Colby.

Gordon Barrett was elected president of the City Terrace Chess Club at its annual meeting. Dr. Martin Sarley is the new vice president, Bernard Oak is secretary and treasurer and Ben Kakimi is the tournament director.

The next activities at the club, which meets Wednesday evenings at 3875 City Terrace Dr., will be a lecture by Leslie Simon on Jan. 11 and a simultaneous exhibition by Emil Bersbach on Jan. 25.

CHESS OLYMPICS, LEIPZIG

RUY LOPEZ

	Fischer	Bobozoff	Fischer	Bobozoff
Fischer	U.S.A.	Bulgaria	U.S.A.	Bulgaria
White	Black	White	Black	
1-P-K4	P-K4	19-R-B4	N-N5	
2-N-KB3	N-QB3	20-B-K3	QR-Q	
3-B-N5	P-QR3	21-R-B	P-B4	
4-B-R4	N-B3	22-Q-Q2	N-B3	
5-O-O	B-K2	23-Q-B2	NxP	
6-R-K	P-QN4	24-BxN	BxB	
7-B-N3	P-Q3	25-RxRch	RxR	
8-P-B3	O-O	26-P-QN4	RxN	
9-P-KR3	B-K3	27-PxR	QxP	
10-P-Q4	BxB	28-PxP	Q-N6ch	
11-PxB	PxP	29-K-B	QxRPch	
12-PxP	P-Q4	30-K-K	Q-R8ch	
13-P-K5	N-K5	31-K-K2	Q-B3	
14-N-B3	P-B4	32-Q-N3ch	K-R	
15-PxPe.p.	BxP	33-Q-KB3	Q-K3ch	
16-NxN	PxN	34-K-B	Q-R3	
17-RxKP	Q-Q4	35-R-Q	Resigns	
18-R-N4				

KING'S INDIAN DEFENSE

	Dr. Euwe	Ghitescu	Dr. Euwe	Ghitescu
Dr. Euwe	Holland	Rumania	Holland	Rumania
White	Black	White	Black	
1-P-Q4	N-KB3	20-N-B2	R-N2	
2-P-QB4	P-KN3	21-N-K2	N-B3	
3-P-KN3	B-N2	22-N-K3	N-Q6	
4-B-N2	P-Q3	23-N-Q4	N-N5ch	
5-P-K4	O-O	24-NxN	PxN	
6-N-K2	P-K4	25-Q-K3	P-N6ch	
7-P-Q5	QN-Q2	26-K-N	BxB	
8-O-O	P-QR4	27-QxKP	Q-R7ch	
9-QN-B3	N-B4	28-KxB	N-B4	
10-P-KR3	N-K	29-K-B3	P-N7	
11-B-K3	P-B4	30-Q-B2	Q-R6ch	
12-PxP	PxP	31-R-KN	R-Kch	
13-P-B4	P-K5	32-K-K2	Q-K6	
14-Q-Q2	P-R4	33-K-Q	N-K5	
15-B-Q4	R-B2	34-N-K2	N-B7ch	
16-K-R2	BxB	35-P-R4	N-R6	
17-NxB	P-KR5	36-K-K		
18-QN-K2	PxPch	Resigns		
19-NxP	Q-R5			