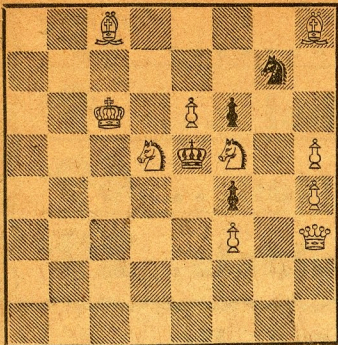


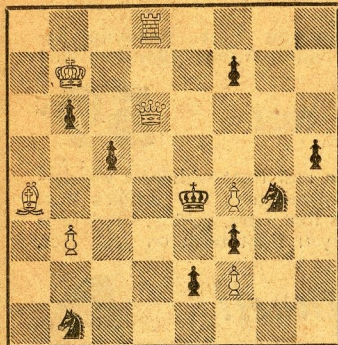
BLACK 4



WHITE 10

White mates in two.

BLACK 9



WHITE 7

White mates in three.

SOLUTION TO PROBLEM 2477: Q-R8.

SOLUTION TO PROBLEM 2478: QxN.P.

We received solutions from R. E. Cunningham, J. C. Dickson, L. H. Frembling, K. J. Hartman, J. Kaufman, K. M. Simes, L. Harvey, L. A. Victor, S. W. Nay, W. L. Rankel, Dr. J. A. Healy, R. W. Gillies, N. C. Woodard, S. E. Williams, E. E. Hetherington, R. Killgrove, W. B. Tudor, C. P. Ford, W. A. Kiefer, P. V. Nielsen, N. Lesser, A. P. Berthold, W. C. Everett, D. M. Fehling, J. P. Walsh, M. Morris, C. G. Taber, J. J. Adams, W. L. Koethen, E. Ellis, A. Bradley, L. B. Rotter, M. J. Bakjian, B. McGuire, J. G. Scripps, T. Rothman, Toscha Seidel, K. Chambers, R. W. Peterson, B. V. Owl, C. B. Collins, C. Huffman, D. C. Harwich, A. D. Blotts, C. T. Tongko.

LARRY REMLINGER'S SIMULTANEOUS EXHIBITION

Larry Remlinger, the 11-year-old chess wizard of Long Beach, will be guest of the San Luis Obispo Army Post, where he will meet all comers in a simultaneous exhibition today at 1 p.m.

According to Pvt. Roland Harshbarger, assistant tournament director of the post, after the exhibition the finals of the post championship will be played, which will be concluded on Thursday. There are 30 participants in the tournament.

IMRE KONIG SIMULTANEOUS EXHIBITION AND LECTURE

Imre Konig, international chess master, will give his first exhibition in the Southland at the headquarters of the Hollywood Chess Group, 108 N Formosa Ave., on Tuesday at 7:30 p.m. Konig was unable to get to Los Angeles last Tuesday because of unforeseen circumstances. As there are a limited number of boards available, reservations should be made early. Call Webster 18817.

KING'S INDIAN DEFENSE

Averbach White	Gligoric Black	Averbach White	Gligoric Black
1-P-QB4	N-KB3	24-P-B4	B-N2
2-N-QB3	P-KN3	25-P-KB5	B-Q2
3-P-KN3	B-N2	26-Q-N3	N-B3
4-B-N2	O-O	27-PxP	PxP
5-P-Q4	P-Q3	28-P-B5ch	B-K3
6-N-B3	QN-Q2	29-PxP	BxQ
7-O-O	P-K4	30-PxQ	B-B2
8-P-K4	PxP	31-P-N5	NxBP
9-NxP	N-B4	32-PxP	PxP
10-P-B3	P-QR4	33-R-N7	QR-B
11-B-K3	P-R5	34-R-B2	N-R3
12-R-B2	P-B3	35-B-B	N-B4
13-N-B2	Q-K2	36-RxB	KxR
14-R-Q2	N(3)-Q2	37-B-B4ch	K-B
15-R-B	B-K4	38-N-B5	N(4)xP
16-B-B2	R-K	39-NxB	KxN
17-N-K3	N-B	40-NxN	RxN
18-N-K2	Q-B2	41-B-R6	R-Q
19-R-N	P-R6	42-P-R3	R-Q5
20-P-N3	P-R4	43-RxP	N-K5
21-Q-B2	B-K3	44-R-B7ch	K-R
22-N-B3	N-R2	45-B-K3	R-N7
23-P-QN4	N-R3	46-Resigns.	

NIMZO-INDIAN DEFENSE

Euwe White	Reshevsky Black	Euwe White	Reshevsky Black
1-P-Q4	N-KB3	21-Q-K2	Q-Q3
2-P-QB4	P-K3	22-R-R3	Q-B5
3-N-QB3	B-N5	23-R-Q	B-R3
4-P-K3	P-B4	24-R-KB3	Q-K5
5-B-Q3	O-O	25-R-K3	Q-N5
6-P-QR3	BxNch	26-P-B3	Q-B5
7-PxB	P-QN3	27-P-N3	Q-R3
8-N-K2	B-N2	28-R-B3	Q-N4
9-O-O	P-Q3	29-Q-KB2	R-Q2
10-Q-B2	P-Q4	30-R(1)-QB	R(2)-B2
11-PxQP	QxP	31-R(1)-B2	Q-QR4
12-N-B4	Q-B3	32-B-B??	N-Q4!
13-P-B4	PxP	32-PxN	RxR
14-PxP	QN-Q2	34-RxR	QxR
15-B-N2	KR-K	35-B-N2	Q-N6
16-R-K	QR-B	36-BxB	R-B7
17-QR-B	N-B	37-P-Q6	RxQ
18-B-B	N-N3	38-P-Q7	Q-Q4
19-NxN	RPxN	39-KxR	QxP(2)
20-R-K3	KR-Q	40-Resigns.	

PHILIDOR DEFENSE

Szabo White	Bronstein Black	Szabo White	Bronstein Black
1-P-Q4	N-KB3	22-B-QB3	B-N2
2-P-QB4	P-Q3	23-P-N5	P-N4?
3-N-KB3	QN-Q2	24-PxN	B-B
4-P-KN3	P-K4	25-PxP	PxP
5-B-N2	P-B3	26-N-Q5	Q-B3
6-PxP	PxP	27-P-B5!	B-QN2
7-O-O	B-B4	28-PxP	RPxP
8-N-B3	O-O	29-N-K7ch!	BxN
9-Q-B2	Q-K2	30-PxB	P-N5
10-N-KR4	R-K	31-BxNP	QxN
11-N-R4	P-K5	32-B-B3	RxP
12-N-B5	Q-K4	33-Q-R6	N-K4
13-B-R3	B-B	34-Q-N5	Q-K
14-B-Q2	Q-B2	35-R-B4	R-B
15-B-N2	P-KN3	36-R-R4	RxB
16-N-K3	Q-K4	37-Q-R6!	P-B3
17-P-B4	Q-KR4	38-PxR	R-N2
18-P-KR3	QxKP	39-R-Q8!	QxR
19-QR-Q	Q-Q6	40-Q-R8ch	K-B2
20-Q-B	Q-Q4	41-QxQ	P-N4
21-P-KN4	Q-B2	42-R-R6	Resigns.

NIMZO INDIAN DEFENSE

Keres White	Euwe Black	Keres White	Euwe Black
1-P-Q4	N-KB3	19-B-K5	B-B3
2-P-QB4	P-K3	20-KR-K	BxB
3-N-QB3	B-N5	21-RxB	Q-B3
4-P-K3	P-B4	22-Q-K4	R-N
5-B-Q3	O-O	23-P-Q5	PxP
6-N-B3	P-Q4	24-BxP	B-Q2
7-O-O	QN-Q2	25-R(1)-K	B-B3
8-P-KR3	QPxP	26-P-QB4	P-KN3
9-BxP	PxP	27-P-N3	QR-K
10-PxP	B-K2	28-K-N2	RxR
11-B-R2	N-N3	29-QxR	QxQ
12-N-K5	QN-Q4	30-RxQ	BxB
13-Q-B3	NxN	31-PxB	R-Q
14-PxN	N-Q2	32-R-K7	RxP
15-N-N4	N-B3	33-RxNP	R-QR4
16-NxNch	BxN	34-R-N3	Draw
17-B-KB4	B-N4		agreed
18-B-KN3	B-R5		

GRUNFELD DEFENSE

Reshevsky White	Szabo Black	Reshevsky White	Szabo Black
1-P-Q4	N-KB3	17-B-K2	B-K3
2-P-QB4	P-KN3	18-QxP	N-Q4
3-N-QB3	P-Q4	19-NxN	P-QR3
4-B-B4	B-N2	20-Q-B5	QR-B
5-P-K3	O-O	21-Q-R3	BxN
6-Q-N3	P-B4	22-O-O	RxP
7-PxQP	PxP	23-KR-Q	B-N2
8-PxP	P-K3	24-BxP	Q-K5
9-PxP	N-B3	25-BxB	RxB
10-PxPch	K-R	26-QR-B	R-K
11-N-B3	NxP	27-R-Q2	B-K4
12-NxN	QxN	28-R(1)-Q	K-N
13-B-K3	Q-K4	29-P-QN3	B-B2
14-B-K2	B-K3	30-Q-R6	R-N5
15-B-QB4	B-Q2	31-Q-Q3	Q-K4
16-B-KR3	P-QN4	32-Q-Q5ch	Resigns

RENOVA DEFENSE

SONIA GRAF SIMULTANEOUS

Sonia Graf Stevenson, considered one of the world's best women chess players will make her first appearance at the Towne Club, 1150 Ocean Blvd., Long Beach, Thursday, Oct. 8, at 8 p.m. For further information call Long Beach 71985.

RAPID TRANSIT WINNERS

The weekly Wednesday evening Rapid Transit Tournament held at the Hollywood Chess Group, 108 N Formosa Ave., was won by James Cross with a score of 15½-1½; second place was tied between Irving Rivise and Louis Spinner, 13½-3½; four players tied for fourth and fifth places, R. W. Banner, Eugene Rubin, H. Rogosin and Arthur Spiller, 12-5.

The tournament is open to anyone interested in playing in it and visitors are welcome at all times. Call WEBster 18817 for information.

HERMAN STEINER SIMULTANEOUS

Last Tuesday evening your editor substituted for his friend, Imre Konig, who was unable to reach Los Angeles at the scheduled time, at the Hollywood Chess Group headquarters. He allowed one draw against George Goehler and won the rest.

HOLLYWOOD CHESS GROUP CHAMPIONSHIP

The Hollywood Chess Group annual championship will commence Saturday, Oct. 10, with the largest entrance in its history. It will be a 10-round Swiss tournament where the weakest to the strongest may participate, and the only qualification necessary is that one must be a member of the group. The tournament will be nationally rated and those not having a rating are especially urged to participate.

There is so far a guarantee of \$100 first prize and many lesser prizes.

For further information call WEBster 18817. A meeting of participants is scheduled for Wednesday, Oct. 7, at 8 p.m., where rules will be discussed.

WORLD'S CHAMPIONSHIP CANDIDATES TOURNAMENT

The World's Championship Candidates Tournament currently played in Zurich, Switzerland, is nearly half over. Fourteen of the 15 rounds in the first half are finished with the exception of the important game between Samuel Reshevsky of the United States and David Bronstein of the U.S.S.R. This was played in the 13th round and was adjourned with, according to reports, a favorable position for Bronstein. The game will be resumed next Wednesday.

The surprise in this tournament so far is that the top positions are taken by non-Russians, with the exception of Vassily Smyslov, who leads with a small margin. A pleasant surprise is the fine showing of Dr. Max Euwe, former world's champion, who in the last few years has not risen to expectations. He has in this tournament produced some of the finest games in his career.

Reshevsky and Mihail Najdorf, who have played two matches in the last two years, with each other, are in top form. Up to date, Smyslov and Reshevsky are the only ones not defeated. The scores are so close that the second half is unpredictable, as the last player is able to beat the top player, and each round may bring forth a change in the standings.

The games show good quality which, of course, is expected of the best players in the world, with many grandmaster draws (games not reaching 30 moves), but even this is understandable when one considers the strain of such a marathon.

So far we have published the first five rounds and in time hope to bring the rest, space allowing. A complete round-by-round report may be seen on the bulletin board in the Hollywood Chess Group headquarters at 108 N Formosa Ave.

Standing of players after 14 rounds:

Smyslov, U.S.S.R.	9	4
Reshevsky, U.S.A.	8	4
Najdorf, Argentina	7½	5½
Dr. Euwe, Holland	7	6
Petrosian, U.S.S.R.	7	6
Bronstein, U.S.S.R.	6½	5½
Boleslavsky, U.S.S.R.	6½	6½
Taimanov, U.S.S.R.	6½	6½
Keres, U.S.S.R.	6½	6½
Gligoric, Yugoslavia	6	7
Averbach, U.S.S.R.	5½	7½
Kotov, U.S.S.R.	5½	7½
Szabo, Hungary	5½	7½
Geller, U.S.S.R.	5½	7½
Stahlberg, Sweden	3½	10½

QUEEN'S GAMBIT (Tarrasch Defense)

White	Keres	Stahlberg	Keres
1-P-Q4	N-KB3	White	Black
2-P-QB4	P-K3	35-Q-B8ch	K-N4
3-N-KB3	P-Q4	36-Q-Q7ch	K-R3
4-N-B3	P-B4	37-Q-B8ch	Q-N2
5-PxP	BPxP	38-Q-B5	Q-B3
6-QxP	PxP	39-P-R3	R-N6
7-B-N5	K-K2	40-R-Q	P-B5
8-P-K3	N-B3	41-R-KB	P-B6
9-Q-Q2	O-O	42-RxP	RxR
10-B-K2	B-K3	43-PxR	QxPch
11-O-O	N-K5	44-K-R2	P-R5
12-NxN	PxN	45-Q-K5	Q-B7ch
13-BxN	QxB	46-K-R	Q-KB4
14-N-Q4	KR-Q	47-Q-R8ch	K-N4
15-KR-Q	NxN	48-Q-Q8ch	K-B5
16-PxN	R-Q3	49-Q-Q2ch	K-B6
17-Q-K3	B-Q4	50-Q-Qch	K-K6
18-QR-B	QR-Q	51-Q-Kch	K-Q6
19-B-B4	P-KR3	52-Q-Nch	K-K7
20-P-KR3	P-R3	53-Q-N2ch	K-K6
21-BxB	RxB	54-Q-Bch	K-K5
22-R-B4	P-B4	55-Q-Nch	K-B6
23-P-B3	P-QN4	56-Q-Qch	K-B5
24-R-B6	Q-Q2	57-Q-Q2ch	K-K4
25-RxRP	PxP	58-Q-B3ch	K-Q4
26-QxP	RxP	59-Q-N3ch	K-B3
27-R-K6	R-Q7	60-Q-QB3ch	K-N2
28-R-R8	RxR	61-Q-N7ch	K-R3
29-QxRch	K-R2	62-Q-B3	Q-B8ch
30-Q-B3	P-N3	63-K-R2	Q-B7ch
31-R-K	RxP	64-K-R	K-N3
32-Q-R3	Q-Q3ch	65-Q-B8	Q-K8ch
33-K-R	P-R4	66-K-N2	Q-K5ch
34-Q-K7ch	K-R3	67-K-N	Q-Q5ch
		68-Resigns.	

Gligoric	Petrosian	Gligoric	Petrosian
White	Black	White	Black
1-P-Q4	N-KB3	22-Q-B2	P-B4
2-P-QB4	P-B4	23-P-R3	Q-QB2
3-P-Q5	P-K3	24-P-B4	N-Q2
4-N-QB3	PxP	25-NxN	BxN
5-PxP	P-Q3	26-BxN	KxN
6-N-B3	P-KN3	27-Q-B3ch	K-N
7-N-Q2	QN-Q2	28-K-R2	Q-B4
8-P-KN3	B-N2	29-P-K3	P-QN4
9-B-O	O-O	30-PxR e.p.	RxNP
10-O-O	Q-K2	31-R-R5	Q-N5
11-N-B4	N-K4	32-R-K2	QxQ
12-NxN	QxN	33-PxQ	K-B
13-P-QR4	P-QR3	34-K-N	R-N8ch
14-P-R5	R-K	35-K-B2	B-N4
15-B-B4	Q-K2	36-P-N4	R-QB8
16-Q-N3	N-Q2	37-R-R3	K-B2
17-KR-K	N-K4	38-B-B3	R-K2
18-N-R4	B-Q2	39-P-R4	R-Q8
19-N-N6	QR-N	40-P-N5	R-Q6
20-B-Q2	B-N4	41-P-R5	PxP
21-B-QB3	P-B5	Draw agreed	

KING'S INDIAN DEFENSE

Taimanov	Najdorf	Taimanov	Najdorf
White	Black	White	Black
1-P-Q4	N-KB3	23-N-N	B-Q2
2-P-QB4	P-KN3	24-Q-K	B-KN4
3-N-QB3	B-N2	25-N-Q2	B-K6ch
4-P-K4	P-Q3	26-K-R	Q-N4
5-N-B3	O-O	27-B-B	QR-KB
6-B-K2	P-K4	28-R-Q	P-N4
7-O-O	N-B3	29-P-R4	P-QR3
8-P-Q5	N-K2	30-PxP	PxP
9-N-K	N-Q2	31-R-B7	R-N2
10-B-K3	P-KB4	32-N-N3	N-R5
11-P-B3	P-B5	33-R-B2	B-R6
12-B-B2	P-KN4	34-Q-K2	NxNP
13-N-Q3	N-KB3	35-BxN	BxBch
14-P-B5	N-N3	36-QxB	Q-R5
15-R-B	R-B2	37-QxRch	KxQ
16-R-B2	B-B	38-R-N2ch	K-R
17-PxP	PxP	39-N-K	N-B5
18-Q-Q2	P-N5	40-R-N3	B-B7
19-R(1)-B	P-N6	41-R-N4	Q-R6
20-PxP	PxP	42-N-Q2	P-R4
21-BxP	N-R4	43-Resigns.	
22-B-R2	B-K2		

QUEEN'S INDIAN DEFENSE

Petrosian	Taimanov	Petrosian	Taimanov
White	Black	White	Black
1-P-Q4	N-KB3	22-P-B4	P-B4
2-N-KB3	P-K3	23-Q-R3	KxP
3-P-B4	P-QN3	24-QR-Q	Q-K5
4-N-B3	B-N2	25-QR-K	Q-Q4
5-P-K3	P-Q4	26-R-Q	R-B
6-PxP	PxP	27-RxP	Q-R4
7-B-N5ch	P-B3	28-R-B4	RxR
8-B-Q3	B-K2	29-PxR	Q-B4ch
9-O-O	O-O	30-Q-B2	QxBP
10-P-QN3	QN-Q2	31-Q-QN3	Q-K5
11-B-N2	B-Q3	32-Q-B2	N-K3
12-N-KR4	R-K	33-P-B5	N-B4
13-N-B5	B-KB	34-Q-Q2	Q-N8ch
14-R-B	N-K5	35-R-K	Q-Q6
15-BxN	PxB	36-Q-K	Q-Q4
16-Q-N4	P-N3	37-Q-N3	N-K5
17-NxKP	RxN	38-Q-R4	N-B6!
18-QxR	PxN	39-Q-N4	P-KR4!
19-QxKBP	B-N2	40-Q-R3	N-K7ch
20-P-K4	N-B	41-Resigns.	
21-P-K5	Q-Q4		

SICILIAN DEFENSE

Kotov	Geller	Kotov	Geller
White	Black	White	Black
1-P-K4	P-QB4	12-QxQ	RxQ
2-N-KB3	N-QB3	13-RxRch	BxR
3-P-Q4	PxP	14-B-QB4	B-K2
4-NxP	N-B3	15-P-KR3	B-Q2
5-N-QB3	P-Q3	16-R-Q	B-K
6-B-KN5	P-K3	17-P-R3	K-B
7-Q-Q2	B-K2	18-B-K3	N-R4
8-O-O-O	O-O	19-N-K2	N-B3
9-P-B4	P-K4	20-N-B3	N-R4
10-NxN	PxN	21-N-K2	N-B3
11-PxP	PxP	22-N-B3	Drawn

U.S.S.R. VS. ARGENTINA

News has just been received that a Russian team headed by Mikhail Botvinnik, world's champion, has accepted an invitation to play against an Argentine team in Buenos Aires in March.

LETTER TO ENGLAND

In this concluding installment of Imre Konig's letter about California to the British chess magazine, the international chess master discusses San Francisco.

"The largest chess club is situated in the Mechanics' Institute. (An English idea; it was once established as a kind of working men's club, I remember having visited one in Nottingham.) It is one of the oldest, if not the oldest, chess club in the United States, supposed to have been founded in 1855. Here chess fans battle from 10 a.m. till 10 p.m. To see 20 to 30 players is not unusual. They run a perpetual tournament with a kind of ladder system, but with an involved point system, to make up for the differences in the player's strength.

"The main organizers in Northern California are Gutrie McClain, Neil T. Austin and Dr. H. J. Ralston. The latter is editor of the California Chess Reporter, the official organ of the California State Chess Organization. George Koltanowski has set up an organization of his own called the Chess Friends of Northern California, Inc., a corporation for promoting chess.

"The Spanish influence is still noticeable in Northern California, particularly in the names of towns like San Jose, Modesto, Sacramento. On Sunday afternoon, going by car to Modesto (about 60 miles from San Francisco) I was able to watch the final of the Central California Chess League matches, where about 80 players participated.

"Though there are many chess clubs one curious thing should be mentioned—open air chess. In MacArthur Park, in Los Angeles, and in Golden Gate Park, in San Francisco, there is great chess activity until sunset. Unlike players in New York, they have no enclosure.

"I expected to have lots of rain when I arrived in San Francisco but a spell of six weeks sunshine waited for me. They say it is unprecedented in the history of the city. By the time this letter is printed I hope all my English friends, too, will be enjoying sunshine more than it is appreciated here, because in England they do not take it for granted.

"Best regards to all my chess friends in England and to you.

"Yours truly,

"IMRE KONIG"