

# THE CHESS-PLAYER.



[All communications for this department should be addressed to "Chess Editor Argonaut, 213 Dupont Street, San Francisco, Cal."]

The Chess Editor is absent for a few weeks at the East, during which he requests the indulgence of his correspondents. All solutions and other communications will be acknowledged upon his return.



Problem No. CVI.—By E. Pradignat.

*From La Strategie.*

WHITE—King at K sq; Queen at KR7; Rooks at KR4, QKt5; Bishop at QKt sq; Knights at QR sq, K7; Pawn at K2.

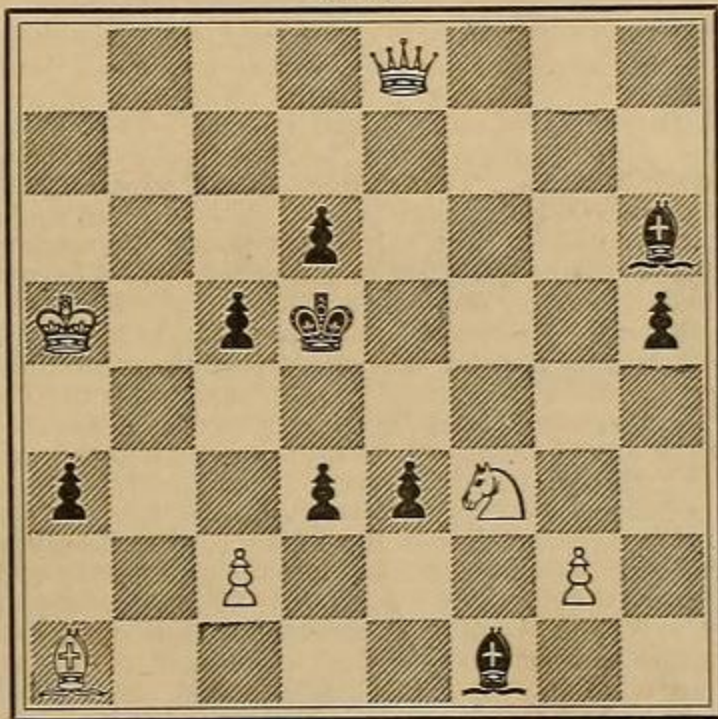
BLACK—King at K6; Rook at KB3; Bishop at KKt7; Knights KB5, QR6.

White to play and mate in two moves.



Problem No. CVII.—By N. Sardotsch, Trieste.

BLACK.



WHITE.

White to play and mate in three moves.