

THE CHESS-PLAYER.

All communications for this department should be addressed to "J. E. Tippet,
P. O. Box 2546, San Francisco, Cal." Original problems, games, solutions,
and correspondence on Chess matters solicited.

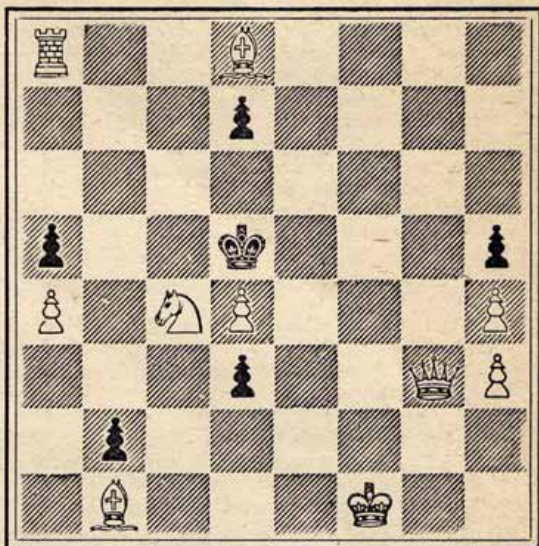
Problem 198.—By F. B. Phelps Sandwich, Ill.

WHITE—King at Kk12; Queen at K8; Rooks at K2, KB6; Bishop at KB3; Knights at K4, KR4; Pawns at QB3, Q2, KB4.

BLACK—King at Q4; Rook at QKt2; Bishops at QB sq, QKt sq; Knights at QR sq, QR4; Pawns at KB4, Kk12, QB5.

White to play and mate in two moves.

Problem 199.—By A. F. Mackenzie, Jamaica.
BLACK.



WHITE.

White to play and mate in three moves.

Solutions of Problems.

No. 188— 1—B Kt8

No. 189— 1—Q B sq
2—Q B7 ch
3—B Q5 mates.

1—K K3 (a, b)
2—K x Q

(a) 1— 1—K Q5
2—Q B4 ch 2—K Q6
3—B R6 mates.

(b) 1— 1—P x P
2—Q K2 ch 2—K B5
3—Q K4 mates.

Solutions received: Problems Nos. 188 and 189, from H'y Dobinson, East Oakland; Nos. 190 and 192, from Jas. Harvey, Nanaimo, B. C.; Nos. 192 and 193, from C. L. T., Brownsville, Cal.; No. 195, from Eugene A.; Nos. 196 and 197, from U. Hartnell, Salinas City; Nos. 194 and 195 from W., Tombstone, A. T.; No. 197, from Jno. Y. Somavia, Santa Clara, Cal.

Game No. 97.

Played recently in New York city between Mr. W. Steinitz and a distinguished amateur of the Manhattan Chess Club. Game and notes from New York *Evening Telegram*:

FRENCH DEFENSE (AT ODDS.)
(Remove Black's KB Pawn.)

<i>White.</i>	<i>Black.</i>	<i>White.</i>	<i>Black.</i>
Amateur.	Steinitz.	19—P x P	19—Kt R5
1—P K4	1—P K3	20—Kt x Kt	20—B x Kt
2—P Q4	2—P Q4	21—P Kt5	21—Q K sq
3—P K5	3—P QB4	22—B K3	22—Q Kt3
4—P QB3	4—Kt QB3	23—P B4	23—B QB7
5—P QR3	5—KKt K2	24—QR B sq	24—B B4
6—Kt KB3	6—P QB5	25—Q Q sq	25—P R3 (b)
7—Kt Kt5	7—Kt B4	26—Q Q2	26—QR Kt sq
8—Q B2	8—Kt QR4	27—B Q sq	27—P x P
9—B B4	9—Kt QKt6	28—P x P	28—B R6
10—R R2	10—B K2	29—R B3	29—R x R
11—Kt B3	11—Castles	30—B x R	30—Q B4
12—QKt Q2	12—B Q2 (a)	31—B Kt2	31—R Kt6
13—Kt x Kt	13—B QR5	32—R KB sq	32—Q Kt5
14—Q Q2	14—B x Kt	33—K R sq	33—R x BP
15—K R sq	15—P QKt4	34—R KKt sq	34—R Q6
16—B K2	16—P QR4	35—B x B	35—Q x B
17—Castles	17—P Kt5	36—Q x RP (c) and Black mates	
18—P KKt4	18—P x BP	in five moves.	

(a) Mr. Steinitz thinks that he should have taken Pawn with KKt.

(b) Now that Black has made an avenue of escape for his Queen, White abandons his intention of playing B R5.

(c) Threatening mate in two moves.

The *Argonaut* chess column to-day enters upon the third year of its existence. It is exceedingly gratifying to note that its influence in the cause of chess has been productive of so much good, and that its efforts to foster and encourage the study of the game have met with such success. Much of this is due to the interest manifested by our contributors, who have so largely aided in accomplishing these results not only by their words of encouragement and advice, but also by practical assistance in the shape of problems, games, and notes of interest. The steadily increasing list of solvers attests the appreciation of this large class of our readers to the excellence of the problems composed expressly for the column by such well-known composers as W. A. Shinkman, A. F. Mackenzie, F. B. Phelps, C. H. Wheeler, J. J. Hanauer, H. and E. Bettmann, George J. Slater, J. Jespersen, and Fritz Peipers. The game department, which during the past year received many valuable additions in original games played by some of our best local players, will continue to maintain its excellence, and the latest chess news will always be given for the benefit of the chess-players throughout the coast. The attention of our readers is called to the problems composed for this issue, as well as to the practice game of Mr. Steinitz, which will not only prove entertaining but instructive.