

THE CHESS-PLAYER.

All communications for this department should be addressed to "J. E. Tippet, P. O. Box 2546, San Francisco, Cal." Original problems, games, solutions, and correspondence on Chess matters solicited.

Problem 212.—By J. B. Halkett, Ottawa, Canada.

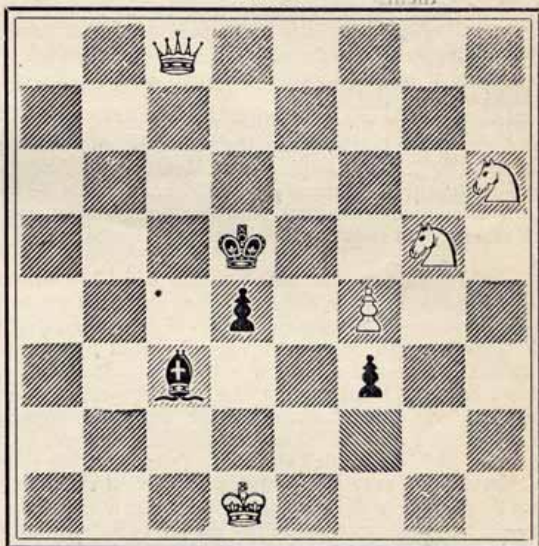
WHITE—King at Kk4; Rook at K6; Bishop at Qb4; Knight at K2.

BLACK—King at K5; Pawns at Kb5, K4, K6, Q5.

White to play and mate in two moves.

Problem 213.—By Geo. J. Slater, Bolton, England.

BLACK



WHITE.

White to play and mate in three moves.

Solutions of Problems.

No. 202—Two solutions: Q R6 (author's) and Q Kt3. *

No. 203—	1—Q R7	1—K K4 (a, b, c)
	2—Q R4	2—P B5
	3—Q B6 mates.	

(a) 1—	1—P B5
2—Q KB5	2—Any move
3—Q or Kt mates.	

(b) 1—	1—K B4
2—Q R7 ch	2—K x Kt
3—Q R3 mates.	

(c) 1—	1—K K6
2—Q x P	2—K Q5
3—Kt B2 mates.	

No. 200 was solved as follows: Q R6 by U. Hartnell, Salinas City; C. H. Wheeler, Forest Hill, Ill.; and Q Kt3 by E. Haun, M. D., Napa City; Robert Syer, San Jose; J. Y. Somavia, Santa Clara; C. L. T., Brownsville; F. W. Richardson, San Bernardino; Bk., San Luis Obispo; and W., Tombstone, A. T.

No. 201 was solved by U. Hartnell, J. Y. Somavia, Robert Syer, W., C. L. T., Bk., C. H. Wheeler, and H'y Dobinson (Oakland).

The following sprightly little game was played in December, 1885, by Mr. James Rayner, Leeds, England, while he also conducted several other games simultaneously. Game and notes from Leeds *Mercury*:

CENTRE GAMBIT.

<i>White.</i>	<i>Black.</i>	<i>White.</i>	<i>Black.</i>
Rayner.	_____		
1—P K4	1—P K4	13—Q K2	13—P Q3
2—P Q4	2—P x P	14—Kt B3	14—B Kt5
3—Q x P	3—Kt QB3	15—Kt x Kt (d)	15—Kt x Kt
4—Q K3	4—P KKt3	16—P B3	16—Kt x B
5—Kt QB3	5—B KKt2	17—Q x Kt	17—B Q2
6—B Q2	6—KKt K2	18—Kt K2	18—Q KKt4 (e)
7—Castles	7—Castles (a)	19—B B3	19—B QKt4 (f)
8—P KR4 (b)	8—P KB4	20—B x B ch	20—K x B
9—B B4 ch	9—K R sq	21—Q x P ch	21—R B2
10—P R5	10—P B5	22—R x RP ch	22—K x R
11—P x P	11—Kt xP	23—Q x R ch	23—Q Kt2 (g)
12—Q B3 (c)	12—QKt K4	24—R mates.	

(a) Up to this point there is very little fault to find with Black's conduct of his defense. Here, however, we think he erred in judgment, because White's evident intention is to have his K side pieces and pawns free to throw against Black's position should he castle on his K side.

(b) And White at once begins to put his intention into effect, and Black becomes cramped.

(c) A lost move, probably from the hurry occasioned by having the other games on hand. Q K2 at once was preferable.

(d) For the second time offering his Q, but Black is not such a friend as to take it.

(e) Defensive and counter-attacking also, though the object of White's last move was not entirely divined.

(f) Only apparently good. It loses a clear piece at best; but in trying to save the piece he is neatly mated.

(g) Seeing it must come, he prefers the speedy and prettiest end to the slightly longer life.

The chess-players of New Jersey held their second annual meeting on February 22, 1886, at Elizabeth, New Jersey. The State trophy, "The C. H. Waterbury Cup," was offered for annual competition, the cup to have the name of the winner inscribed upon it, but not to become his property. Permanent prizes were offered as follows: Second place, subscription to *International Chess Magazine*, or a copy of "Cook's Synopsis," American edition; third place, *Brooklyn Chess Chronicle* or *British Chess Magazine*, or a copy of Bird's "Chess Masterpieces"; fourth place, Crane's Pocket Chess-board, or a copy of "American Chess-player's Hand-book." The call was issued by our old friend Mr. Ralph W. Pope, President Elizabeth Chess Club, under whose auspices the tournament was conducted.

The Auburn (Illinois) *Citizen* announces its second tourney for solutions and two-move problems. The prizes for best two-movers are "Chess; Its Poetry and Prose," "Chess-nut Burrs," and "Group picture of American Problemists." Solvers' prizes include "Cook's Synopsis," "Chess-nut Burrs," "*Citizen* subscription," "Selected Problems and Games," etc. Particulars can be obtained by addressing Chess Editor, *Citizen*, Auburn, Illinois.

The conclusion of the Steinitz-Zukertort match will be played in the rooms of the New Orleans Chess, Checkers, and Whist Club.

A chess column has been started in the *Denver Times*, under the editorial charge of Mr. E. M. Cornell, Secretary Denver Chess Club.

Mr. A. B. Hodges has transferred his chess column from the *Nashville Union* to the *American* of that city.