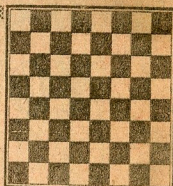


# chess

by richard shorman



## TOURNAMENT RESULTS

Fifty-eight players participated in the Carlmont Open and the Bay Area High School Championship, held at the Carlmont YMCA, Oct. 5-6. Trophies were awarded for the first three places in all divisions.

### Class "A"

1. Garry Wilson, San Leandro, 4½-1½.
2. Jim Marmor, Palo Alto, 3½-1½.
3. Bernard Lainson, Sacramento, 3-2.

### Class "B"

1. John Bulash, Mountain View, 4-1.
2. Robert Martinez, Hayward, 4-1.
3. Bill Poindexter, San Carlos, 3½-1½.

### Class "C"

1. Joe Lara, Sunnyvale, 4-1.
2. David Burgess, Santa Clara, 4-1.
3. Charles Morell, Daly City, 4-1.

### High School Championship

1. Jim Shearer, Livermore, 4½-1½.
2. Carl Mueller, Los Altos, 4-1.
3. Peter Prochaska, Redwood City, 3½-1½.

★ ★ ★

The over-all playing strength of women chess competitors has increased noticeably in recent years, principally due to incessant organizational efforts by the Soviet Union. Here is a short, interesting game from the current USSR Women's Championship.

White: Olga Katskova. Black: Nana Aleksandriya.  
XXVIII USSR Women's Championship.

English Opening.

1	P-QB4	P-QB4	14	PxB(d)	PxP
2	N-QB3	N-KB3	15	NxP	NxP
3	P-KN3	P-K3	16	BxN(e)	Q-N3
4	B-N2	P-Q4	17	R-B1	QxB
5	PxP	PxP	18	N-B3(f)	BxN
6	P-Q4	PxP	19	BxB	Q-N7
7	QxP	N-B3(a)	20	Q-Q3	NxP
8	Q-Q1	B-QN5	21	R-B2(g)	Q-N8ch
9	B-Q2	O-O	22	K-Q2	QxR/7
10	N-R3(b)	P-Q5	23	R-R1	QR-Q1
11	N-QN1	B-N5(c)	24	B-Q4	RxNch
12	N-B4	R-K1	25	Resigns	
13	P-B3	P-Q6			

(a) Black's active pieces compensate her isolated QP.

(b) Simply 10 N-B3 fights for the center squares more efficiently.

(c) Black already has her sights set on P-Q6.

(d) Castling is White's safest choice here, even though Black has the upper hand after 14 . . . PxP 15 NxP B-KB4.

(e) Or 16 O-O Q-N3ch 17 K-R1 N-B7ch 18 RxN QxN, with a fine attack for Black.

(f) If 18 BxB, then Black continues 18 . . . RxNch 19 QxR R-K1 20 QxRch (20 B-K7 Q-B8ch) QxQch.

(g) Loses fast, but 21 R-B4 loses slowly.

★ ★ ★

## WHERE TO PLAY CHESS

The Hayward Chess Club, 2058 D St. (Hayward Arts and Science Center). Monday and Friday, 8-10:30 p.m.

Cherryland Cafe, 22472 Meekland Ave. (corner of A St. and Meekland Ave.), Hayward. Evenings, 10 p.m. to 6 a.m.

The Fremont Chess Club, School St., Niles District, Fremont (Niles Recreation Center). Monday, 7-11 p.m.

The Newark Chess Club, Cedar Blvd. (Newark Community Center). Tuesday, 7-10:30 p.m.