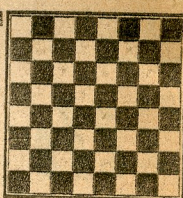


# chess



by richard shorman

## TOURNAMENT RESULTS

The second annual San Francisco Open, sponsored by the Bechtel Employees' Club, attracted 113 chess players competing in three divisions at the St. Francis Hotel. International Master George Koltanowski directed the event. Nov. 16-17.

### USCF Open Division

1. William Addison, San Francisco, 5-0, \$160.  
2-7 Jude Acers, San Francisco; Allen Van Gelder, San Francisco; Ron Gross, Compton; George Saidi, Downey; David Blohm, Berkeley; Stephen Spencer, Berkeley, 4-1, \$23.33 each.

#### Class "B"

1. George Syty, Sunnyvale, 4½-½, \$55.  
2. Gary Berry, San Francisco, 4½-½, \$55.  
3. James Marmor, Palo Alto, 4-1, \$7.50  
4. John Bulash, Mt. View, 4-1, \$7.50

#### Class "C"

1. Ridgely Schneider, Redwood City, 4½-½, \$31.25.  
2. Joe Lara, Sunnyvale, 4½-½, \$31.25.  
3. Rene Saguisag, San Francisco, 4½-½, \$31.25.  
4. Patricio Tapia, Alameda, 4½-½, \$31.25.

★ ★ ★

White: Mark Watson

Black: Garry Wilson

San Francisco Open, November 17, 1968

Caro-Kann Defense

1 P-K4	P-QB3	20 B-B2(i)	B-K2
2 P-Q4	P-Q4	21 B-R4	Q-Q4
3 N-QB3	PxP	22 R-K1	P-R5
4 NxP	N-B3	23 N-K4	KR-N1
5 NxNch	NPxN	24 P-R6	R-N5(j)
6 N-K2	P-K4(a)	25 BxNch	PxB
7 B-K3	B-K3	26 P-B3	R-N3
8 N-N3	N-Q2	27 PxP(k)	B-KR6
9 B-Q3(b)	P-QB4(c)	30 RxP(l)	P-Q6
10 P-QB3(d)	Q-N3	28 R-K2	B-QN5
11 0-0(e)	BPxP	29 R-Q2	QxR
12 PxP	PxP	31 R-B8ch	BxR(m)
13 B-KB4	N-K4	32 PxB/Qch	KxQ
14 B-B5	0-0-0(f)	33 Q-B1ch	K-N1
15 Q-B2ch	K-N1	34 N-B3	Q-Q5ch
16 P-QR4	P-KR4	35 K-R1	P-R6
17 P-R5	Q-B4	36 P-KN3	Q-B7
18 Q-Q1(g)	Q-B3	37 Resigns	
19 RB1(h)	Q-Q2		

(a) This appears to be at least as good as the book line, 6 . . . B-N5 7 P-KR3 B-R4 8 P-QB3 N-Q2 9 Q-N3 Q-N3.

(b) Plausible, but in view of what happens, 9 B-K2 looks stronger.

(c) Too sharp. Euwe suggests 9 . . . Q-B2 and Q-side castling as offering Black good counterplay.

(d) Correct is 10 PxBP BxBP! (10 . . . Q-R4ch? 11 P-B3 NxP 12 BxN! QxB 13 N-K4 Q-K2 14 B-N5ch B-Q2 15 NxPch) 11 BxB NxB 12 B-N5ch K-K2 13 Q-K2 PQ-R3 14 B-B4 Q-Q5 15 BxB PxB 16 R-Q1, with only slightly the better game for Black.

(e) Justifiably trading a Pawn for some initiative.

(f) Black used up half an hour on his clock weighing White's attacking chances against Black's counterplay before making this move.

(g) Exchanging Queens only helps Black reach a won end-game.

(h) After 19 B-K4 Q-Q2 20 P-R4 White's prospects improve somewhat.

(i) Better is 20 B-Q3 P-R5 21 N-K4 B-K2 22 R-K1 KR-N1 23 B-B1.

(j) A powerful move that braces Black's center (after White's forced reply) and prepares to double Rooks on the KN file.

(k) A pretty finish would be 27 Q-Q3 R/1-N1 28 R-K2 B-KR6 29 R/1B2 Q-R7! 30 Q-Q1 P-Q6! (Wilson).

(l) Or 30 R-KB2 Q-Q5. The text move is also equivalent to resignation.

(m) White overlooked this simple capture. Evidently he had counted on 31 . . . RxR 32 PxB/Qch KxQ 33 RxQ to turn the tables.

★ ★

### WHERE TO PLAY CHESS

The Hayward Chess Club, 2058 D St. (Hayward Arts and Science Center). Monday and Friday, 8-12 p.m.

Cherryland Cafe, 22472 Meekland Ave. (corner of A St. and Meekland Ave.), Hayward. Evenings, 10 p.m. to 6 a.m.

The Fremont Chess Club, 37720 Fremont Blvd. (Centerville Jr. High School). Thursday, 7-10 p.m.

The Newark Chess Club, 35501 Cedar Blvd. (Newark Community Center). Tuesday, 7-10 p.m.