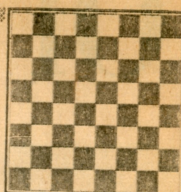


chess

by richard shorman



TOURNAMENT RESULTS

Mike Goodall directed the first Chabot College Open in Hayward, August 10-11. The event was fully rated by CFNC.

CLASS "A": 1-2. Randall Hough, Stockton, and Raymond Ng, Livermore, 3½-1½, \$20. each; 3. Alan Lavergne, Menlo Park, 3-2, trophy.

CLASS "B": 1. Norman Wild, San Jose, 4½-½, \$25; 2-5. James Shearer, Livermore, James Evans, Sebastopol, Charles Maddigan, Oakland, and Tom Makens, San Francisco, 4-1, \$3.75 each.

CLASS "C": 1. Leonard Petty, Oakland, 4½-½, \$25; 2-3. Stephen Gee, San Francisco, and Craig Barnes, Berkeley, 4-1, \$7.50 each.

★ ★ ★

With the center locked, action on one wing must be met with threats on the other side of the board.

White: Garry Wilson.

Black: Alan Lavergne.

Chabot Open, Aug. 11, 1969.

King's Indian Defense

1 P-QB4	N-KB3	24 P-B5(f)	B-B1
2 N-QB3	P-KN3	25 N-Q1(g)	K-N1
3 P-KN3	B-N2	26 P-R5	R-N1
4 B-N2	O-O	27 N-N2	B-K2
5 N-B3	P-Q3	28 N-R4	R-KB1(h)
6 P-Q4	N-B3	29 PxBP	BxP
7 O-O(a)	B-N5	30 N-B5	PxP
8 P-KR3	BxN	31 RPxP	BxN
9 BxB	N-Q2	32 PxB	NxNP
10 P-K3(b)	P-K4	33 PxN	P-B6
11 P-Q5	N-K2	34 Q-K3	R-B5
12 B-N2	P-KB4(c)	35 P-B6(i)	RxPch
13 P-B3	P-KN4	36 K-B1	PxP
14 P-K4	P-B5	37 PxP(j)	Q-B2
15 P-KN4	N-KN3	38 B-K1	N-N7
16 B-Q2	K-B2	39 RxRch	KxR
17 Q-K2	R-R1	40 Q-Q3	Q-B3
18 R-QB1	P-QR3(d)	41 B-B2	Q-B5
19 P-QN4	P-KR4	42 R-N1	Q-B1
20 P-QR4(e)	Q-KN1	43 R-Q1	Q-KN1
21 R-KB2	N-R5	44 Q-Q5	Q-K1
22 B-R1	Q-R2	45 Q-Q7	Q-R4
23 R-R2	N-B3	46 Q-Q8ch	Resigns

(a) Putting the question to the Knight leaves Black surprisingly well posted, e.g., 7 P-Q5 N-R4! 8 P-N3 (8 N-Q2 P-B4) P-B3 9 B-N2 PxP 10 PxP (10 NxP? NxN 11 BxB N-K6!) N-K5 (MCO 10, pg. 455).

(b) Najdorf — Geller, Zurich, 1953, continued 10 B-62 NxP 11 BxP R-N1 12 B-N2 R-N5 13 P-K3 N-K3 14 Q-K2 N-K4! 15 P-B4 N-Q2 16 N-Q5 R-N1 17 Q-QB2 P-QB3 18 N-B3 Q-B2 19 R-N1 P-QR4 20 B-Q2 N/3-B4, which David Brenstein evaluates as good for Black in his book, *International Grandmaster Tournament* (Moscow, 1956, pg. 393).

(c) Having achieved the ideal pawn formation in this defense, Black will concentrate further efforts on opening a file close to the enemy King, while White will seek his fortune on the Queen side.

(d) Black pays dearly throughout the game for this purposeless move. An immediate 18 . . . P-KR4 makes more sense.

(e) Both sides have maintained a fine balance of terror on opposite wings.

(f) Pursuing his original plan in the midst of expert defense, White makes his bid to seize the strategic initiative.

(g) Beginning a long journey, characteristic of closed positions, to reach the best possible square: N-B3-Q1-N2-R4-B5.

(h) In this position Black may already have envisaged his Knight sacrifice on move 32.

(i) Consistent to the finish, penetration on one flank is matched by a counter-thrust on the other side.

(j) Threatening 38 BxP, as 38 . . . R-B5 loses to 39 Q-N3ch and 40 BxR. More active, however, is 37 RxP, e.g. 37 . . . QxP (37 . . . Q-B2 38 B-B3) 38 QxQ RxQ 39 BxNP or 37 . . . N-N7 38 RxQ NxQch 39 BxN RxR 40 BxBP R-B2 41 K-B2, and White wins more efficiently than in the game.